

PURDUE  
UNIVERSITY

COLLEGE OF LIBERAL ARTS 

*Voices ♦ Communities ♦ Cultures*

*Data Digest*  
*2007-08*

Facts about:

Students

Instruction

Faculty & Staff

Finances

Research

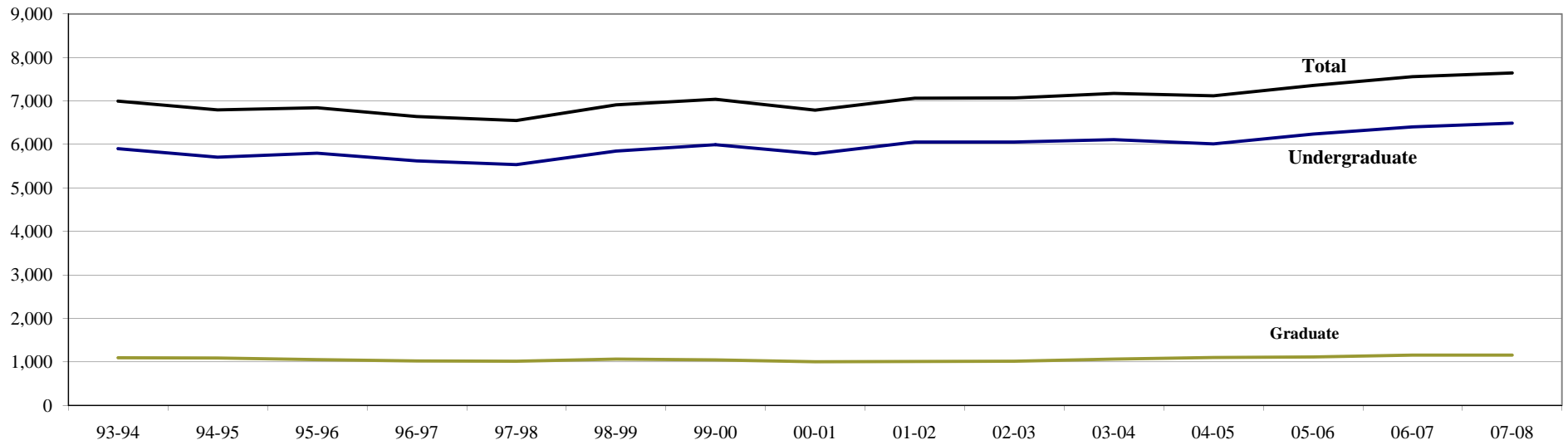
<b>Students</b>		<b>Faculty &amp; Staff</b>	
Historical Enrollment by Student Level	4	Faculty & Staff Headcount	27
Undergraduate Enrollment	5	Graduate Staff Headcount by Department	28
Undergraduate Enrollment by Department	6	Tenured & Tenure Track Faculty Headcount by Gender	29
Graduate Enrollment by Department	7	Tenured & Tenure Track Faculty Headcount by Department	30
Enrollment by Gender	8	Tenured & Tenure Track Faculty Headcount by Race/Ethnicity	31
Undergraduate Enrollment by Race/Ethnicity	9	Tenured & Tenure Track Faculty Headcount by Gender & Rank	32
Undergraduate Enrollment by International Students	10	Tenured & Tenure Track Faculty Headcount by Race & Rank	33
Undergraduate Enrollment by Major/Minor	11	Faculty & Staff Headcount by Gender	34
Undergraduate Enrollment by Major/Minor (Continued)	12	Faculty & Staff Headcount by Classification and Race/Ethnicity	35
Degrees Conferred by Degree Level	13	Tenure Track and Clinical Faculty Searches	36
Baccalaureate Degrees Conferred by Department	14	Promotions by Rank, Gender & Race/Ethnicity	37
Average SAT Scores	15	<b>Finances</b>	
Retention and Graduation Rates	16	Total Annual Expenditures	39
<b>Instruction</b>		Total Annual Expenditures by Category	40
Student Credit Hours by Department - All Semesters	18	Total General Fund Expenditures	41
Average Class Size by Department	19	Total Gift Fund Expenditures	42
Weekly Teacher Class Hours per General Fund Faculty FTE	20	Total Sponsored Program Expenditures	43
Weekly Student Class Hours - All Semesters	21	Expenditures by Type & Source	44
Weekly Student Class Hours - Fall Semesters	22	Development Annual Giving	45
Weekly Student Class Hours by Type of Instr. and Rank of Instructor	23	Endowment Market Value	46
Weekly Student Class Hours by Department	24	Endowment Income Summary	47
Weekly Student Class Hours - Summary University	25	<b>Research</b>	
		Total Annual Sponsored Program Awards	49
		Total Extramural Awards by Sponsor	50
		Total Extramural Awards by Activity Type	51
		Total Extramural Awards by Department	52
		Total Extramural Proposals by Sponsor	53
		Total Extramural Proposals by Activity Type	54
		Total Extramural Proposals by Department	55



*Students*

*Historical Fall Semester Enrollment by Student Level*

Classification	93-94	94-95	95-96	96-97	97-98	98-99	99-00	00-01	01-02	02-03	03-04	04-05	05-06	06-07	07-08
<b>Undergraduate</b>	5,902	5,704	5,795	5,623	5,536	5,846	5,993	5,787	6,054	6,052	6,109	6,014	6,239	6,403	6,486
<b>Graduate</b>	1,093	1,088	1,050	1,019	1,014	1,062	1,045	1,001	1,010	1,015	1,062	1,102	1,113	1,154	1,155
<b>Total Liberal Arts</b>	<b>6,995</b>	<b>6,792</b>	<b>6,845</b>	<b>6,642</b>	<b>6,550</b>	<b>6,908</b>	<b>7,038</b>	<b>6,788</b>	<b>7,064</b>	<b>7,067</b>	<b>7,171</b>	<b>7,116</b>	<b>7,352</b>	<b>7,557</b>	<b>7,641</b>
<b>University Enrollment</b>	35,161	34,484	34,685	35,156	35,715	36,878	37,762	37,871	38,208	38,564	38,847	38,653	38,712	39,228	39,102
<b>% of University Total</b>	<b>20%</b>	<b>20%</b>	<b>20%</b>	<b>19%</b>	<b>18%</b>	<b>19%</b>	<b>19%</b>	<b>18%</b>	<b>18%</b>	<b>18%</b>	<b>18%</b>	<b>18%</b>	<b>19%</b>	<b>19%</b>	<b>20%</b>



Economics was a shared program with the School of Management. The figures above include 50% of all Economics majorsthrough 2000-01

Source: *Office of the Registrar - Enrollment Report*

Residence				
	Liberal Arts		University	
	Number	% of Total	Number	% of Total
Indiana Resident	4,782	74%	20,852	67%
Out-of-State	1,470	23%	7,665	25%
U.S. Territory	83	1%	627	2%
International	151	2%	2,042	7%
	<b>6,486</b>		<b>31,186</b>	

Classification				
	Liberal Arts		University	
	Number	% of Total	Number	% of Total
First Year (1s & 2s)	1,446	22%	7,913	25%
Sophomore (3s & 4s)	1,718	26%	8,371	27%
Junior (5s & 6s)	1,548	24%	7,105	23%
Senior (7s & 8s)	1,770	27%	7,566	24%
Nondegree	4	<1%	231	1%
Total Undergraduate	<b>6,486</b>		<b>31,186</b>	
Total Graduate/Prof.	<b>1,155</b>	<b>15%</b>	<b>7,916</b>	<b>20%</b>
	<b>7,641</b>		<b>39,102</b>	

Gender				
	Liberal Arts		University	
	Number	% of Total	Number	% of Total
Male	2,627	41%	18,132	58%
Female	3,859	59%	13,054	42%
	<b>6,486</b>		<b>31,186</b>	

Full / Part-time Status				
	Liberal Arts		University	
	Number	% of Total	Number	% of Total
Full-Time	6,266	97%	29,688	95%
Part-Time	220	3%	1,498	5%
	<b>6,486</b>		<b>31,186</b>	

Figures include 100% of all Economics majors.

Source: Office of the Registrar - Enrollment Report

Ethnicity					
Department	African	Asian	Hispanic	Native	Total
	American	American	American	American	
Communication	64	26	33	3	126
English	20	15	10	5	50
Foreign Languages and Literatures	13	5	14	1	33
Health and Kinesiology	51	14	21	8	94
History	3	5	9	2	19
Interdisciplinary Studies	17	10	10	2	39
Philosophy	2	2	3	0	7
Political Science	23	16	12	5	56
Psychological Sciences	52	36	46	11	145
Sociology and Anthropology	38	11	26	2	77
Speech, Language, and Hearing Sciences	8	6	7	0	21
Visual and Performing Arts	34	34	21	6	95
General, CODO	43	65	47	2	157
<b>All Liberal Arts</b>	<b>368</b>	<b>245</b>	<b>259</b>	<b>47</b>	<b>919</b>
<b>All Purdue</b>	<b>1,123</b>	<b>1,726</b>	<b>900</b>	<b>157</b>	<b>3,906</b>
<b>Liberal Arts %</b>	<b>33%</b>	<b>14%</b>	<b>29%</b>	<b>30%</b>	<b>24%</b>

Ethnicity				
	Liberal Arts		University	
	Number	% of Total	Number	% of Total
African American	368	6%	1,123	4%
Asian American	245	4%	1,726	6%
Hispanic American	259	4%	900	3%
Native American	47	1%	157	1%
Caucasian	5,260	81%	24,537	79%
Other	114	2%	444	1%
Unreported	42	1%	257	1%
International	151	2%	2,042	7%
<b>Total</b>	<b>6,486</b>		<b>31,186</b>	

*Fall Semester Undergraduate Enrollment by Department*

**Data Digest 2007-08**

*College of Liberal Arts*

<b>UNDERGRADUATES</b>	<b>93-94</b>	<b>94-95</b>	<b>95-96</b>	<b>96-97</b>	<b>97-98</b>	<b>98-99</b>	<b>99-00</b>	<b>00-01</b>	<b>01-02</b>	<b>02-03</b>	<b>03-04</b>	<b>04-05</b>	<b>05-06</b>	<b>06-07</b>	<b>07-08</b>
Communication	1,115	998	988	983	955	1,033	1,210	1,248	1,285	1,055	897	770	758	788	879
English	376	331	366	394	391	431	440	460	476	515	510	489	477	484	493
Foreign Languages and Literatures	122	109	101	95	89	85	99	90	108	126	143	147	165	178	181
Health and Kinesiology	380	393	443	394	630	625	589	508	477	512	530	567	572	629	672
History	203	183	205	185	181	160	169	165	178	234	274	291	285	274	288
Interdisciplinary Studies	50	49	38	28	27	37	43	58	63	70	79	98	128	148	148
Philosophy	35	26	15	18	28	24	20	17	25	30	42	40	44	47	53
Political Science	305	261	235	222	243	233	248	264	323	325	388	361	413	458	403
Psychological Sciences	752	725	689	680	657	698	717	729	767	852	882	886	898	920	885
Sociology and Anthropology	472	444	445	425	392	405	377	372	383	454	461	449	458	452	476
Speech, Language, and Hearing Sciences	200	204	210	212	202	219	198	178	176	161	180	187	227	258	262
Visual and Performing Arts	597	566	538	530	602	628	691	707	796	823	829	835	802	792	790
Undecided/CODO	975	1,110	1,197	1,115	1,005	1,138	1,053	991	997	895	894	894	1,012	975	956
<b>Total Liberal Arts</b>	<b>5,582</b>	<b>5,399</b>	<b>5,470</b>	<b>5,281</b>	<b>5,402</b>	<b>5,716</b>	<b>5,854</b>	<b>5,787</b>	<b>6,054</b>	<b>6,052</b>	<b>6,109</b>	<b>6,014</b>	<b>6,239</b>	<b>6,403</b>	<b>6,486</b>

*Source: Office of the Registrar - Enrollment Report*



*Fall Semester Graduate Enrollment by Department / Program*

**Data Digest 2007-08**

*College of Liberal Arts*

<b>Graduate Students</b>	<b>93-94</b>	<b>94-95</b>	<b>95-96</b>	<b>96-97</b>	<b>97-98</b>	<b>98-99</b>	<b>99-00</b>	<b>00-01</b>	<b>01-02</b>	<b>02-03</b>	<b>03-04</b>	<b>04-05</b>	<b>05-06</b>	<b>06-07</b>	<b>07-08</b>
American Studies	36	42	41	42	41	42	35	37	37	45	48	46	44	44	40
Communication	95	107	93	93	95	96	94	98	98	96	100	100	111	110	111
Comparative Literature	19	27	24	27	31	34	34	36	29	26	32	33	31	30	28
English	250	248	240	236	231	238	261	238	214	225	236	231	218	224	225
Foreign Languages and Literatures	73	80	83	85	64	61	64	69	69	59	60	83	83	82	86
Health and Kinesiology	91	76	71	63	69	79	69	74	76	69	72	76	79	92	92
History	58	65	63	58	52	60	55	44	53	61	67	81	80	81	90
Linguistics				4	6	7	9	17	19	23	24	23	26	27	31
Philosophy	48	44	52	47	39	42	38	38	43	44	53	58	70	65	64
Political Science	68	54	62	73	71	63	68	60	59	57	57	55	61	67	64
Psychological Sciences	126	123	130	118	121	120	105	98	96	97	105	108	106	102	92
Sociology and Anthropology	82	89	77	68	74	66	67	66	72	67	69	79	81	89	86
Speech, Language, and Hearing Sciences	88	87	69	60	85	97	94	81	85	76	80	71	68	89	93
Visual and Performing Arts	59	46	45	45	35	57	52	45	60	70	59	58	55	52	53
<b>Total Liberal Arts</b>	<b>1,093</b>	<b>1,088</b>	<b>1,050</b>	<b>1,019</b>	<b>1,014</b>	<b>1,062</b>	<b>1,045</b>	<b>1,001</b>	<b>1,010</b>	<b>1,015</b>	<b>1,062</b>	<b>1,102</b>	<b>1,113</b>	<b>1,154</b>	<b>1,155</b>

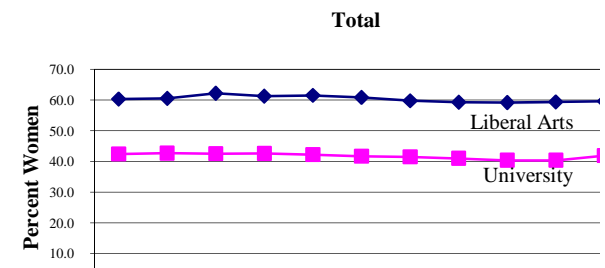
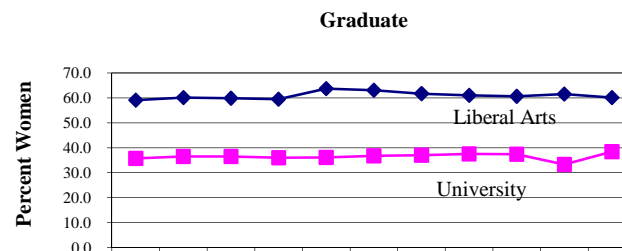
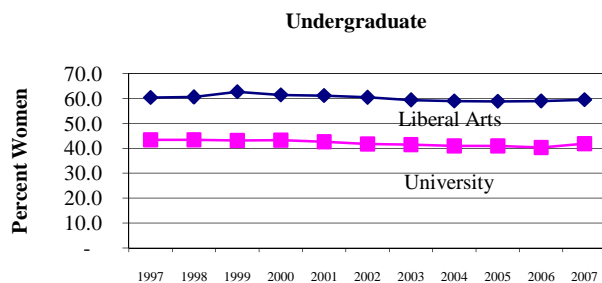
*Source: Office of the Registrar - Enrollment Report*

# Fall Semester Enrollment by Gender

Data Digest 2006-07

College of Liberal Arts

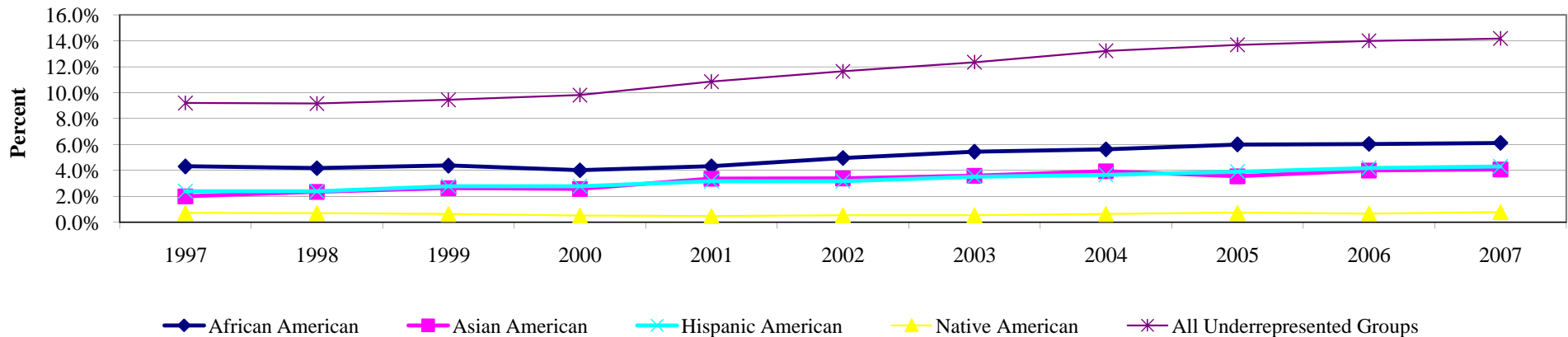
Student Level	1997	1998	1999	2000	2001	2002	2003	2004	2005	2006	2007
<b>Undergraduates</b>											
Men	2,168	2,278	2,210	2,282	2,400	2,450	2,544	2,542	2,567	2,626	2,627
Women	3,302	3,505	3,715	3,637	3,778	3,747	3,722	3,651	3,672	3,777	3,859
Percent Women (Liberal Arts)	60.4	60.6	62.7	61.4	61.2	60.5	59.4	59.0	58.9	59.0	59.5
Percent Women (University)	43.4	43.4	43.1	43.3	42.6	41.8	41.5	41.0	41.0	40.3	41.9
<b>Graduate Students</b>											
Men	405	427	424	398	367	375	407	430	438	444	461
Women	609	635	621	603	643	640	655	672	675	710	694
Percent Women (Liberal Arts)	59.1	60.1	59.8	59.4	63.7	63.1	61.7	61.0	60.6	61.5	60.1
Percent Women (University)	35.7	36.5	36.5	36.0	36.1	36.7	37.0	37.5	37.4	33.3	38.4
<b>Total</b>											
Men	2,573	2,705	2,634	2,680	2,767	2,825	2,951	2,972	3,005	3,070	3,088
Women	3,911	4,140	4,336	4,240	4,421	4,387	4,377	4,323	4,347	4,487	4,553
Percent Women (Liberal Arts)	60.3	60.5	62.2	61.3	61.5	60.8	59.7	59.3	59.1	59.4	59.6
Percent Women (University)	42.4	42.7	42.5	42.6	42.2	41.7	41.5	41.0	40.4	40.4	41.9





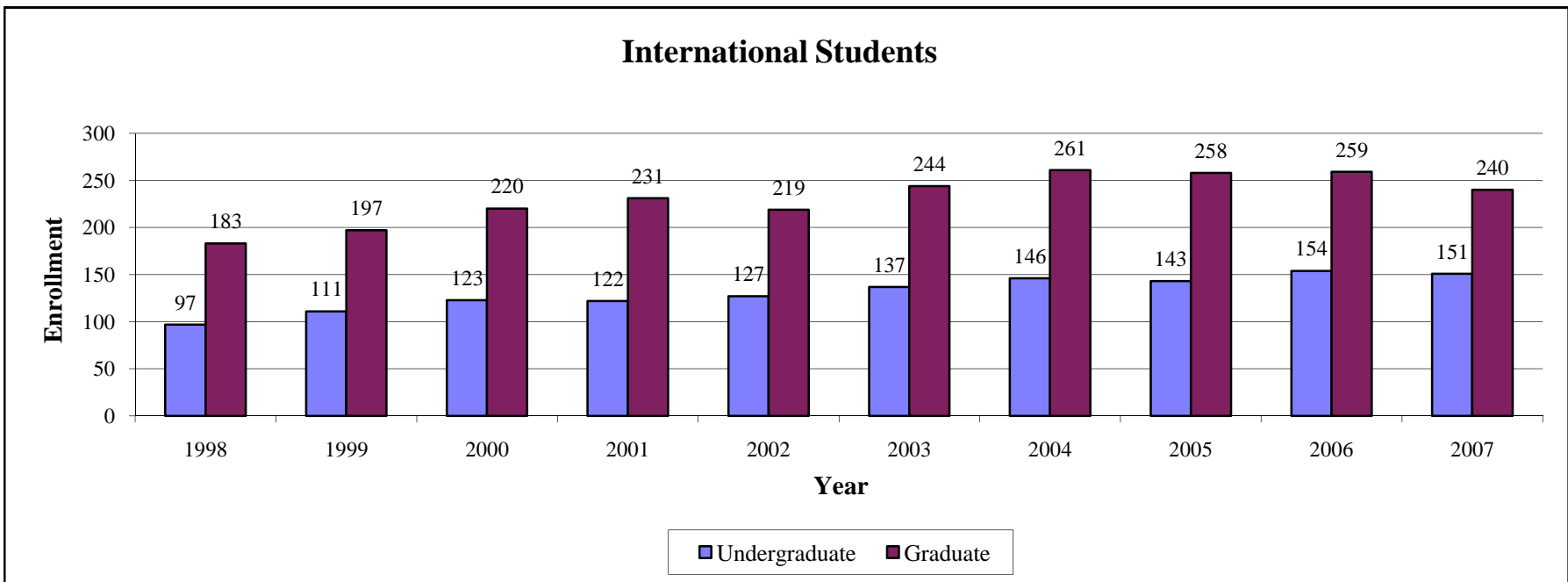
Student Level	1997	1998	1999	2000	2001	2002	2003	2004	2005	2006	2007
<b>Undergraduates</b>											
African American	252	250	253	243	261	303	327	338	361	363	368
Asian American	117	141	152	156	203	207	216	237	213	240	245
Hispanic American	140	144	161	168	192	194	211	220	235	252	259
Native American	42	42	37	31	29	33	33	39	44	40	47
<b>All Underrepresented Groups</b>	<b>509</b>	<b>535</b>	<b>566</b>	<b>567</b>	<b>656</b>	<b>704</b>	<b>754</b>	<b>795</b>	<b>853</b>	<b>895</b>	<b>919</b>
<b>CLA Undergrad Enrollment</b>	<b>5,536</b>	<b>5,846</b>	<b>5,993</b>	<b>5,787</b>	<b>6,054</b>	<b>6,052</b>	<b>6,109</b>	<b>6,014</b>	<b>6,239</b>	<b>6,403</b>	<b>6,486</b>
<b>Undergraduate Percentages</b>											
African American	4.3%	4.2%	4.4%	4.0%	4.3%	5.0%	5.4%	5.6%	6.0%	6.0%	6.1%
Asian American	2.0%	2.4%	2.6%	2.6%	3.4%	3.4%	3.6%	3.9%	3.5%	4.0%	4.1%
Hispanic American	2.4%	2.4%	2.8%	2.8%	3.2%	3.2%	3.5%	3.7%	3.9%	4.2%	4.3%
Native American	0.7%	0.7%	0.6%	0.5%	0.5%	0.5%	0.5%	0.6%	0.7%	0.7%	0.8%
<b>All Underrepresented Groups</b>	<b>9.2%</b>	<b>9.2%</b>	<b>9.4%</b>	<b>9.8%</b>	<b>10.8%</b>	<b>11.6%</b>	<b>12.3%</b>	<b>13.2%</b>	<b>13.7%</b>	<b>14.0%</b>	<b>14.2%</b>

Undergraduate Enrollment by Race/Ethnicity



Source: Office of the Registrar - Enrollment Report

	1998	1999	2000	2001	2002	2003	2004	2005	2006	2007
<b>Undergraduate</b>	97	111	123	122	127	137	146	143	154	151
<b>Graduate</b>	183	197	220	231	219	244	261	258	259	240



Source: Office of the Registrar - Enrollment Report

# Undergraduate Enrollment by Major/Minor - Fall 2007

Data Digest 2007-08

College of Liberal Arts

Major/Minor Area by Department	Major Enrollment	Minor Enrollment	Total Enrollment
<b>Visual and Performing Arts</b>			
Art & Design	-	72	72
Art History	25	43	68
Dance	-	14	14
Fine Arts Concentration	66	-	66
Industrial Design Prof Program	110	-	110
Interior Design	173	-	173
Music History and Theory	-	13	13
Photo & Related Media	79	-	79
Pre Art & Design	-	-	-
Theatre	67	38	105
Theatre Major	-	-	-
Visual Arts Teaching	85	-	85
Visual Communications Design	185	-	185
Department Total	790	180	970

<b>Speech, Language, and Hearing Sciences</b>			
Speech, Language, and Hearing Sciences	262	-	262
Department Total	262	-	262

<b>English</b>			
Creative Writing	90	25	115
English	152	70	222
English Teaching	156	-	156
Professional Writing	95	-	95
Department Total	493	95	588

<b>Interdisciplinary Studies</b>			
African-American Studies	9	13	22
Asian Studies	9	8	17
Classical Studies	10	15	25
Comparative Literature	2	-	2
Interdisciplinary Film/Video	71	28	99
Italian Studies	3	-	3
Jewish Studies	2	6	8
Linguistics	19	22	41
Medieval Studies	5	9	14
Peace Studies	-	8	8
Religious Studies	11	24	35
Women's Studies	7	34	41
Department Total	148	167	315

Major/Minor Area by Department	Major Enrollment	Minor Enrollment	Total Enrollment
<b>History</b>			
History	288	104	392
History of Law and Public Policy	-	-	-
History of Modernity	-	2	2
History of Popular Culture	-	-	-
History of Science & Technology	-	-	-
Department Total	288	106	394

<b>Foreign Languages and Literatures</b>			
Chinese	-	5	5
French	19	35	54
French Teaching	7	-	7
German	7	28	35
German Secondary Teaching	3	-	3
Italian	-	11	11
Japanese	39	7	46
Latin	1	-	1
Russian	6	3	9
Russian Teaching	-	-	-
Spanish	72	147	219
Spanish Minor - Alternate Track	-	-	-
Spanish Teaching	27	-	27
Department Total	181	236	417

<b>Philosophy</b>			
Philosophy	53	72	125
Department Total	53	72	125

<b>Health and Kinesiology</b>			
Health Promotion	67	-	67
Health & Safety Teaching	3	-	3
Physical Education Teaching (B.A.)	127	-	127
Movement & Sport Science	214	-	214
Exercise & Fitness / Health & Fitness	133	-	133
Pre-Athletic Training	57	-	57
Athletic Training	40	-	40
Temporary Physical Education	-	-	-
Physical Education Teaching (B.P.E.) - Secondary	-	-	-
Coaching Endorsement (Teaching)	-	-	-
Department Total	641	-	641

<b>Political Science</b>			
Political Science	403	85	488
Environmental Politics and Policy	-	2	2
Department Total	403	87	490

*Undergraduate Enrollment by Major/Minor (Continued) - Fall 2007*

**Data Digest 2007-08**

*College of Liberal Arts*

Major/Minor Area by Department	Major Enrollment	Minor Enrollment	Total Enrollment
<b>Psychological Sciences</b>			
Psychology	515	81	596
Behavioral Neuroscience Psychology	104	-	104
Department Total	619	81	700
<b>Sociology and Anthropology</b>			
Anthropology	58	29	87
Criminology-Law & Society	315	55	370
Sociology	101	137	238
Sociology / Anthropology	2	-	2
Department Total	476	221	697
<b>Communication</b>			
Pre-Communication	532	-	532
General Communication	49	91	140
Interpersonal Communication	8	-	8
Journalism	-	-	-
Mass Communication	52	-	52
Advertising	-	-	-
Organizational Communication	14	-	14
Public Relations	1	-	1
Public Relations & Rhetorical Advocacy	223	-	223
Telecommunications	-	-	-
Media, Technology and Society	-	-	-
Department Total	879	91	970
<b>General and Preparatory</b>			
General-Uncecided	264	-	264
Pre-Allied Health	-	186	186
Pre-Dental	-	10	10
Pre-Law	-	154	154
Pre-Medicine	-	102	102
Undecided Pre-Law	3	-	3
Department Total	267	452	719

\*49 CODO students did not report minors.

The figures include 100% of all Economics majors.

Source: Liberal Arts Student Services Office

Major/Minor Area by Department	Major Enrollment	Minor Enrollment	Total Enrollment
<b>CODO</b>			
CODO-Minor Required	689	-	689
CODO - Agriculture	-	10	10
CODO - Consumer Family Science	-	128	128
CODO - Education	-	71	71
CODO - Engineering	-	45	45
CODO - Health Sciences	-	9	9
CODO - Management	-	138	138
CODO - Nursing	-	31	31
CODO - Pharmacy	-	12	12
CODO - Science	-	50	50
CODO - Technology	-	92	92
CODO - Vet Med	-	2	2
Department Total*	689	588	1,277

Minors Outside Liberal Arts	College	Enrollment
Agricultural Systems Management (AG)	AG	1
Animal Sciences (AG)	AG	1
Entomology (AG)	AG	-
Natural Resources & Environmental Science (AG)	AG	-
Wildlife Science (AG)	AG	-
Child Development and Family Studies (CFS)	CFS	94
Family Business (CFS)	CFS	-
Social Studies - Government Teaching	EDU	-
Social Studies - Psychology Teaching	EDU	-
Social Studies - U.S. History Teaching	EDU	-
Forensic Sciences (HLS)	HLS	172
Management (M)	MGMT	23
Biology (S)	SCI	12
Biology Teaching	SCI	-
Chemistry (S)	SCI	1
Computer Science (S)	SCI	3
Earth & Space Sciences Teaching	SCI	-
General Science Teaching	SCI	-
Mathematics (S)	SCI	9
Physics (S)	SCI	1
Computer Education Endorsement Teaching	TECH	-
Computer Technology (CPT)	TECH	15
Manufacturing Graphics (for ID majors only)(CGT)	TECH	-
Organizational Leadership (OLS)	TECH	160
Total	-	492

**Summary**

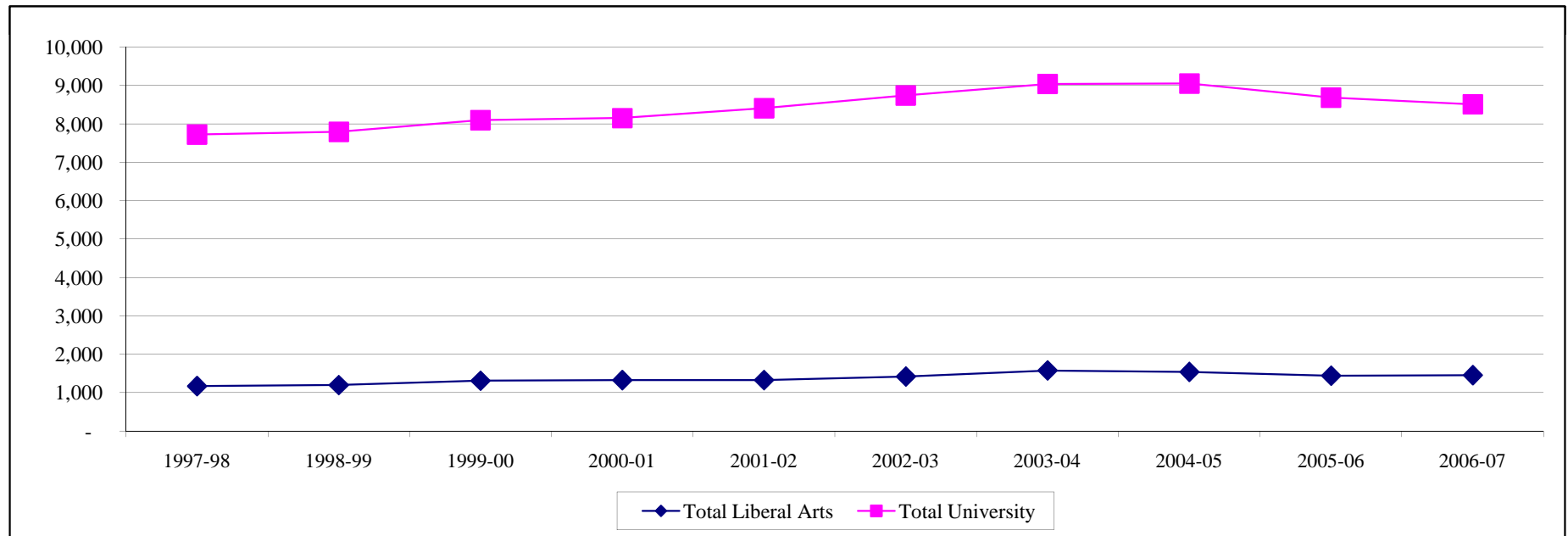
Number of Majors with Enrolled Students	59
Number of Minors within Liberal Arts with Enrolled Students	49
Number of Minors outside Liberal Arts with Enrolled Students	12
<b>Total Enrollment of Majors</b>	<b>6,189</b>
<b>Total Enrollment of Minors</b>	<b>2,868</b>

# Degrees Conferred by Degree Level

Data Digest 2007-08

College of Liberal Arts

Area	Degree Level	1997-98	1998-99	1999-00	2000-01	2001-02	2002-03	2003-04	2004-05	2005-06	2006-07
<b>Liberal Arts</b>	Baccalaureate	970	974	1,064	1,070	1,092	1,185	1,295	1,268	1,181	1,191
	Master's	119	158	159	162	149	166	204	182	182	167
	Doctorate	83	68	88	95	88	71	79	91	80	99
	<b>Total Liberal Arts</b>	<b>1,172</b>	<b>1,200</b>	<b>1,311</b>	<b>1,327</b>	<b>1,329</b>	<b>1,422</b>	<b>1,578</b>	<b>1,541</b>	<b>1,443</b>	<b>1,457</b>
<b>University</b>	Associate	616	682	732	640	669	683	644	543	529	458
	Baccalaureate	5,196	5,351	5,436	5,579	5,800	5,999	6,154	6,197	5,948	5,839
	Education Specialist	4	3	1	1	1	2	-	3	2	1
	Professional	103	134	176	184	192	203	216	239	219	230
	Master's	1,308	1,159	1,286	1,284	1,340	1,392	1,583	1,548	1,420	1,377
	Doctorate	496	466	468	464	409	463	446	524	566	607
	<b>Total University</b>	<b>7,723</b>	<b>7,795</b>	<b>8,099</b>	<b>8,152</b>	<b>8,411</b>	<b>8,742</b>	<b>9,043</b>	<b>9,054</b>	<b>8,684</b>	<b>8,512</b>
<b>Liberal Arts - % of University Total</b>		<b>15%</b>	<b>15%</b>	<b>16%</b>	<b>16%</b>	<b>16%</b>	<b>16%</b>	<b>17%</b>	<b>17%</b>	<b>17%</b>	<b>17%</b>



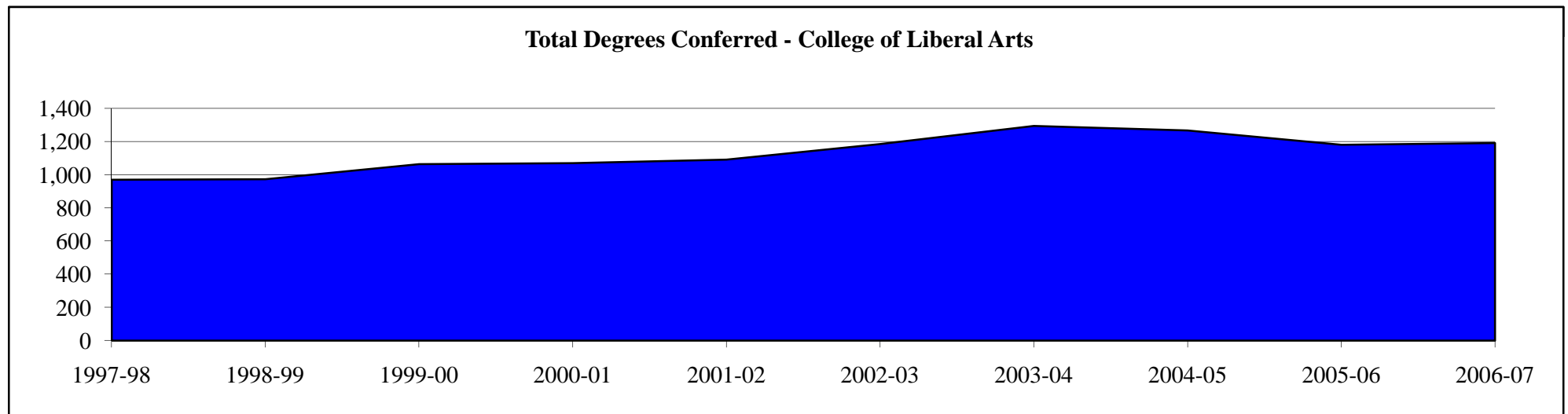
Source: University Data Digest

# Baccalaureate Degrees Conferred by Department

Data Digest 2007-08

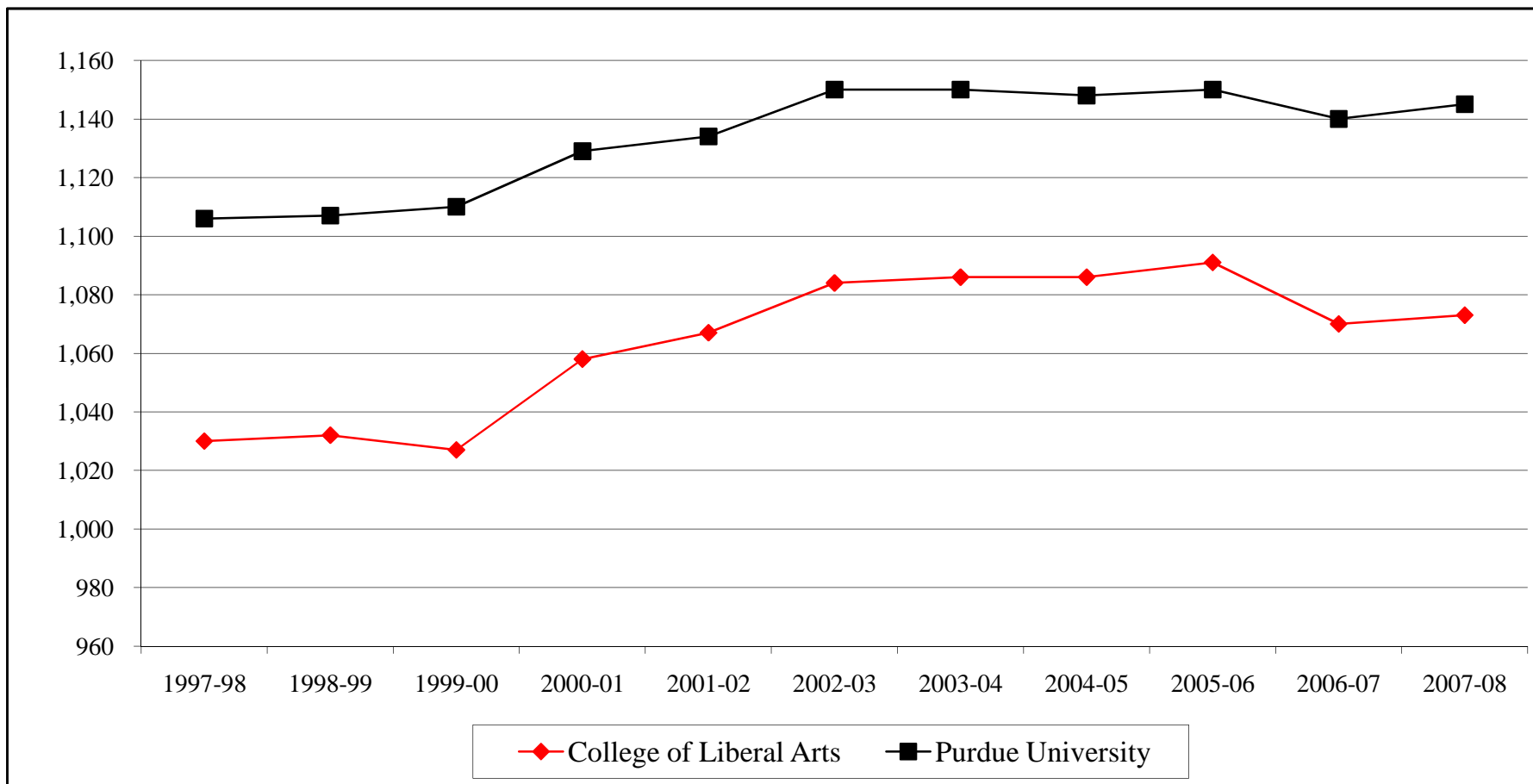
College of Liberal Arts

Department	1997-98	1998-99	1999-00	2000-01	2001-02	2002-03	2003-04	2004-05	2005-06	2006-07
Communication	209	211	240	258	316	283	265	203	166	166
Economics	26	24	29	0	0	0	0	0	0	0
English	101	87	97	115	105	144	146	132	130	109
Foreign Languages and Literatures	19	33	35	28	18	28	35	36	34	28
Health and Kinesiology	110	85	106	115	95	94	108	119	115	97
History	47	40	50	50	37	52	68	77	82	80
Interdisciplinary Studies	3	7	7	7	19	13	23	25	32	39
Philosophy	4	8	7	5	7	5	14	10	11	10
Political Science	49	60	59	61	53	67	102	90	87	101
Psychological Sciences	149	141	164	156	178	205	210	233	210	228
Sociology and Anthropology	99	114	105	97	105	118	127	130	118	125
Speech, Language, and Hearing Sciences	62	61	61	55	53	52	57	52	50	55
Visual & Performing Arts	92	103	104	123	106	124	140	161	146	153
<b>Total College of Liberal Arts</b>	<b>970</b>	<b>974</b>	<b>1,064</b>	<b>1,070</b>	<b>1,092</b>	<b>1,185</b>	<b>1,295</b>	<b>1,268</b>	<b>1,181</b>	<b>1,191</b>



Source: DSS Student Data

	1997-98	1998-99	1999-00	2000-01	2001-02	2002-03	2003-04	2004-05	2005-06	2006-07	2007-08
College of Liberal Arts	1,030	1,032	1,027	1,058	1,067	1,084	1,086	1,086	1,091	1,070	1,073
Purdue University	1,106	1,107	1,110	1,129	1,134	1,150	1,150	1,148	1,150	1,140	1,145



Source: DSS Student Test Scores



Fall 2001 Beginning Students<sup>1</sup>

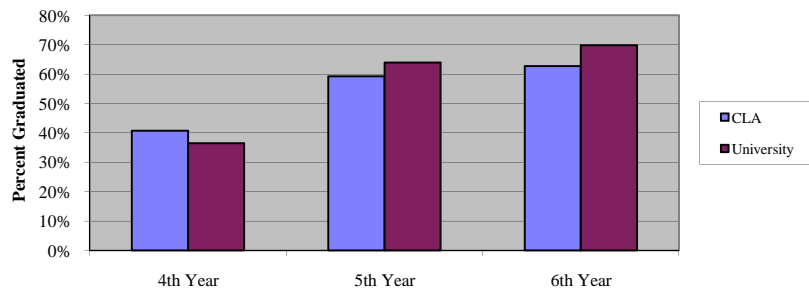
	Status			
	Enrollment		Voluntarily	Academic
	Continued	Graduated	Withdrew	Dismissal
After Year 1	81%	0%	15%	5%
After Year 2	72%	0%	20%	7%
After Year 3	66%	1%	24%	8%
After Year 4	24%	41%	25%	10%
After Year 5	4%	59%	26%	10%
After Year 6	2%	63%	25%	10%

N=1162

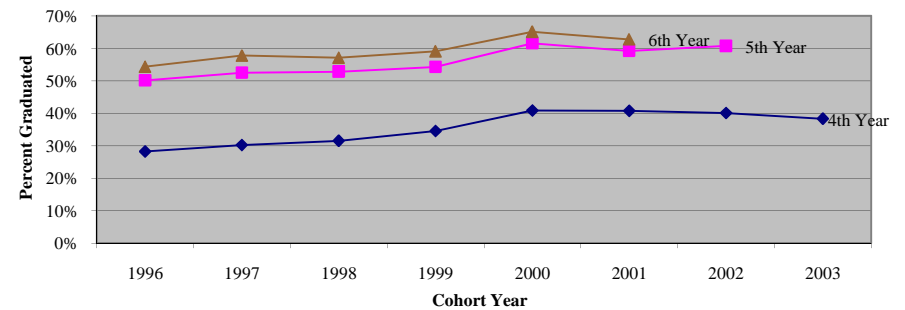
Historical Graduation Rate

Fall	Beginning	First-Year	Graduated	Graduated	Graduated
Beginners	Enrollment	Retention	Within	Within	Within
		Rate	4 Years	5 Years	6 Years
1996	1,309	77%	28%	50%	54%
1997	1,275	78%	30%	52%	58%
1998	1,356	78%	31%	53%	57%
1999	1,365	78%	35%	54%	59%
2000	1,176	83%	41%	62%	65%
2001	1,162	81%	41%	59%	63%
2002	1,019	82%	40%	61%	-
2003	1,084	81%	38%	-	-

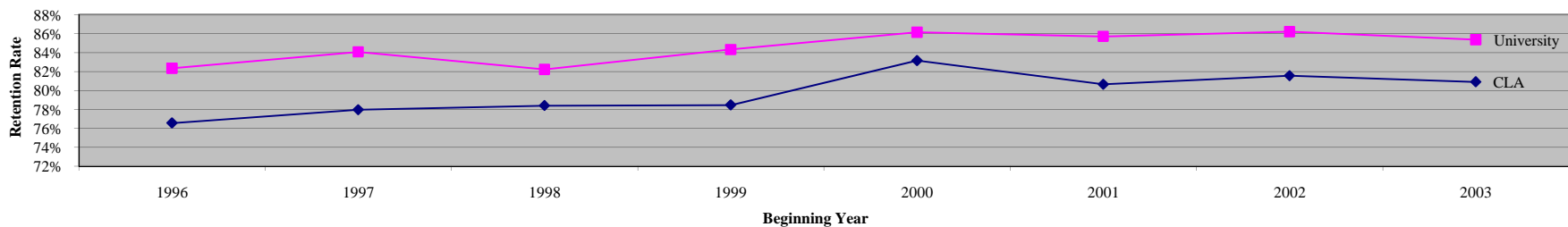
2001  
CLA Beginning Students Degree Completed



CLA Historical Graduation Rates

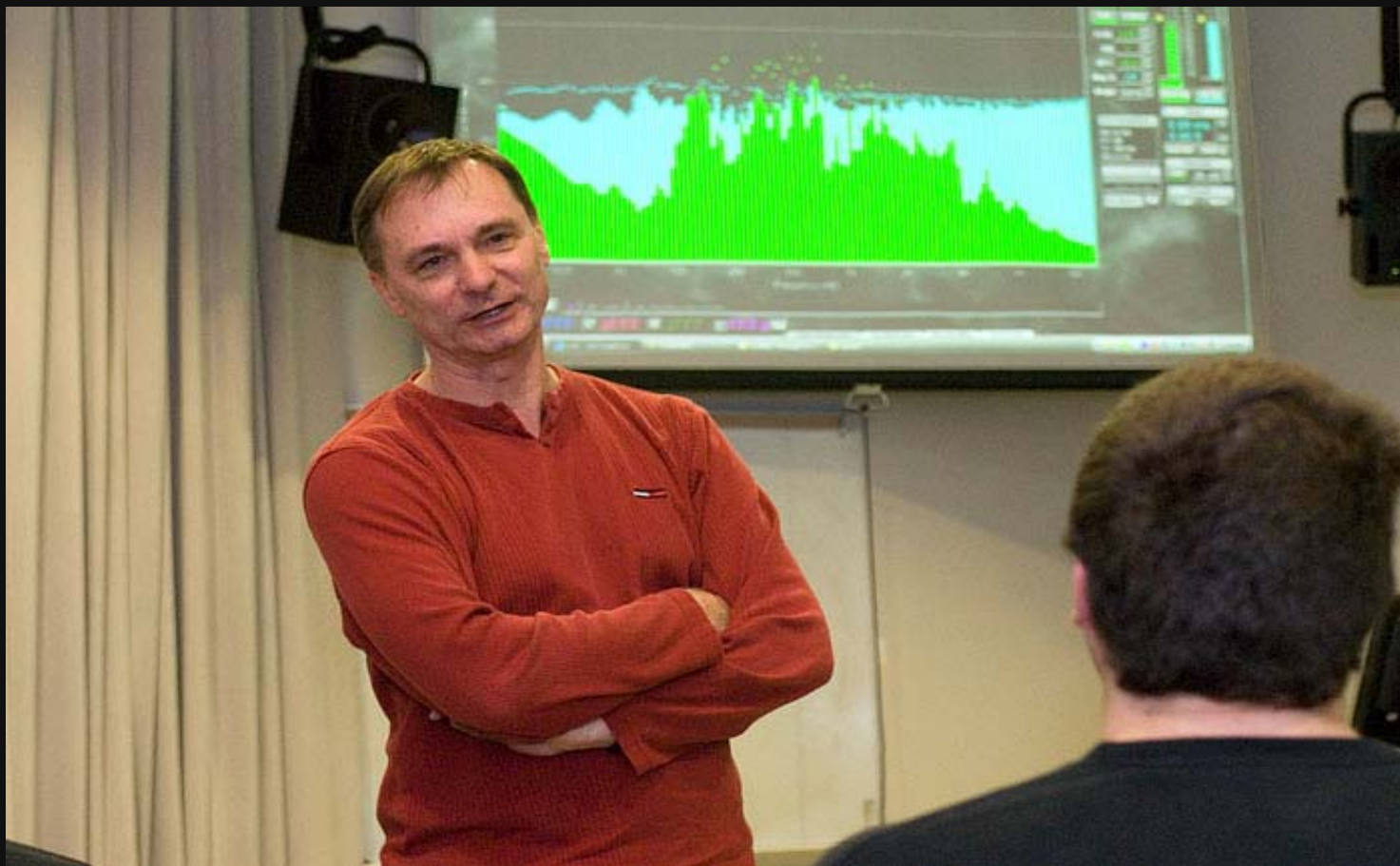


Historical First-Year Retention Rate



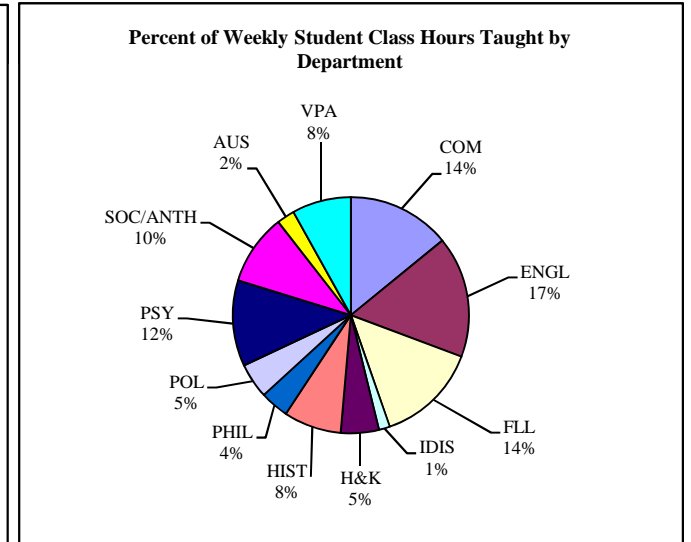
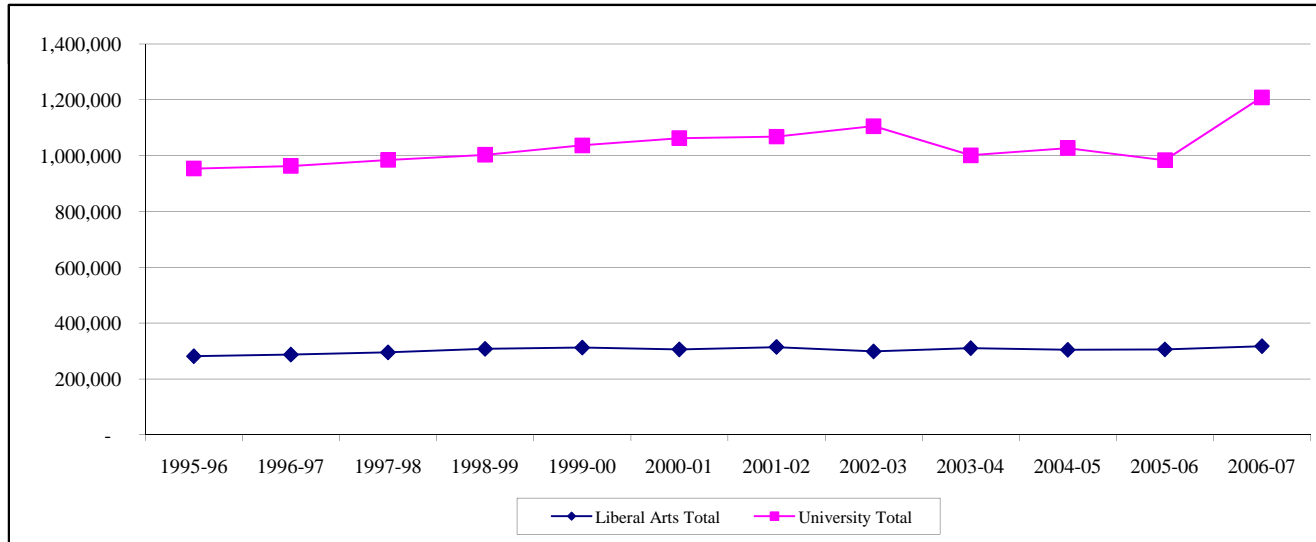
<sup>1</sup> Degree-seeking first-year students who enrolled in summer or fall 2001.

Source: University Data Digest and DSS Student Retention Status



*Instruction*

Department	1995-96	1996-97	1997-98	1998-99	1999-00	2000-01	2001-02	2002-03	2003-04	2004-05	2005-06	2006-07
Communication	40,976	41,209	42,294	44,233	46,139	46,343	46,547	43,107	42,307	40,199	41,640	44,787
English	54,458	56,578	58,084	59,251	61,961	58,356	60,447	56,282	49,957	47,968	48,530	52,713
Foreign Languages and Literatures	35,331	36,414	37,894	38,910	39,274	39,561	39,990	38,277	40,882	41,694	43,327	44,317
General Studies*	4,864	5,811	8,156	7,496	7,815	5,522	4,569	4,864	4,802	5,594	4,530	4,734
Health and Kinesiology	15,270	14,390	14,657	13,971	14,171	14,582	14,213	13,991	15,117	15,399	14,541	16,543
History	23,433	25,280	23,073	25,960	25,302	24,977	25,818	24,305	25,573	24,274	26,347	25,095
Philosophy	8,987	9,089	10,460	11,068	10,971	10,984	11,545	11,160	12,232	12,117	11,514	12,450
Political Science	12,118	13,334	13,956	14,291	13,722	14,400	15,522	14,784	16,340	16,773	17,169	15,254
Psychological Sciences	35,672	35,012	34,761	37,061	37,546	36,073	38,959	36,151	40,626	36,669	36,171	37,411
Sociology and Anthropology	23,153	23,080	22,896	23,471	23,386	23,930	24,461	23,069	24,985	29,514	30,189	30,769
Speech, Language, and Hearing Sciences	5,600	5,768	6,468	7,988	7,679	6,609	6,962	6,891	7,590	7,179	6,729	7,797
Visual and Performing Arts	21,648	21,467	22,523	23,983	24,355	24,515	25,412	25,793	29,835	26,853	25,182	25,630
<b>Liberal Arts Total</b>	<b>281,510</b>	<b>287,432</b>	<b>295,222</b>	<b>307,683</b>	<b>312,321</b>	<b>305,852</b>	<b>314,445</b>	<b>298,674</b>	<b>310,246</b>	<b>304,233</b>	<b>305,869</b>	<b>317,500</b>
<b>% of University Total</b>	<b>30%</b>	<b>29%</b>	<b>29%</b>	<b>29%</b>	<b>29%</b>	<b>30%</b>	<b>29%</b>	<b>27%</b>	<b>31%</b>	<b>30%</b>	<b>31%</b>	<b>26%</b>
<b>University Total</b>	<b>953,667</b>	<b>963,312</b>	<b>984,167</b>	<b>1,003,021</b>	<b>1,036,822</b>	<b>1,062,637</b>	<b>1,068,069</b>	<b>1,105,690</b>	<b>1,001,296</b>	<b>1,027,085</b>	<b>983,610</b>	<b>1,208,766</b>



\* General Studies include: Interdisciplinary Studies, Counseling & Student Services, Women Studies, & African American Studies

Source: Space Management & Academic Scheduling

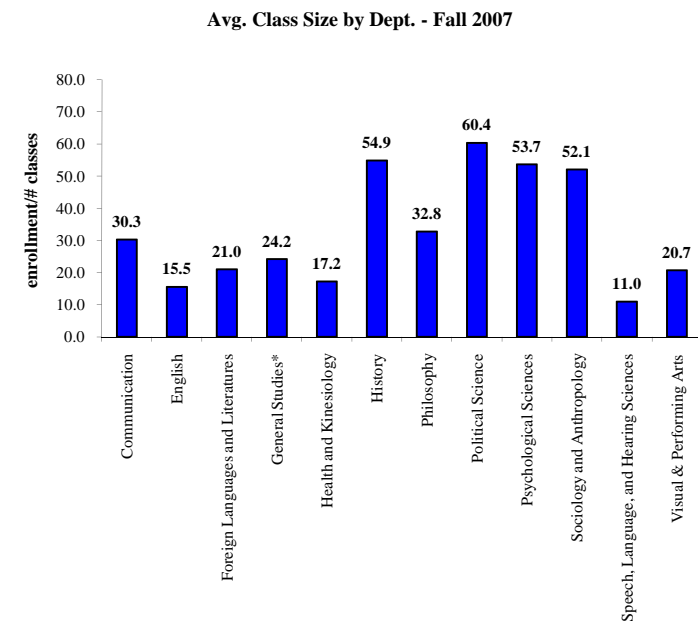
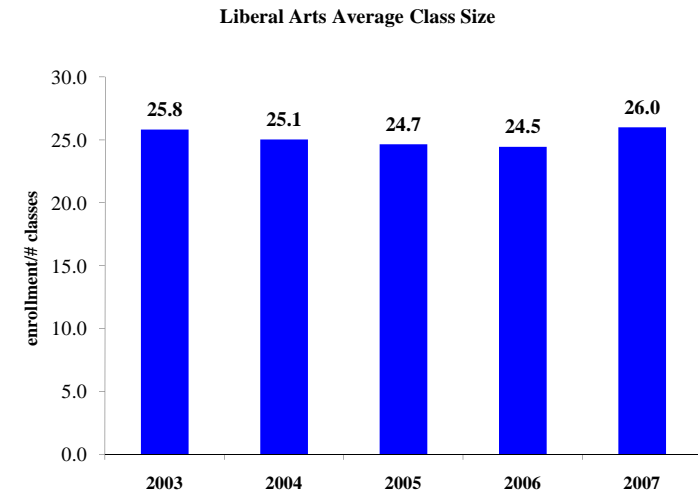
Class Enrollment	2003	2004	2005	2006	2007
Communication	7,320	7,031	7,491	7,838	6,787
English	10,271	10,354	10,676	11,284	5,844
Foreign Languages and Literatures	9,925	10,214	10,411	10,507	8,253
General Studies*	370	1,306	996	1,329	1,138
Health and Kinesiology	4,092	4,072	4,063	4,282	2,270
History	4,718	3,678	4,442	3,997	3,898
Philosophy	2,668	2,662	2,428	2,634	1,476
Political Science	2,866	2,750	2,827	2,482	2,416
Psychological Sciences	7,670	7,148	6,900	7,181	4,242
Sociology and Anthropology	4,467	4,909	5,187	5,380	4,585
Speech, Language, and Hearing Sciences	1,665	1,218	1,391	1,653	726
Visual & Performing Arts	7,018	6,889	6,570	6,395	3,954
<b>Total College of Liberal Arts</b>	<b>63,051</b>	<b>62,231</b>	<b>63,381</b>	<b>64,962</b>	<b>45,588</b>

Number of Classes	2003	2004	2005	2006	2007
Communication	266	243	261	275	224
English	641	642	659	728	377
Foreign Languages and Literatures	427	480	482	491	393
General Studies*	14	57	51	57	47
Health and Kinesiology	179	202	227	192	132
History	78	52	64	71	71
Philosophy	77	74	71	71	45
Political Science	65	55	57	47	40
Psychological Sciences	144	147	125	136	79
Sociology and Anthropology	77	80	91	100	88
Speech, Language, and Hearing Sciences	116	108	122	145	66
Visual & Performing Arts	358	344	359	342	191
<b>Total College of Liberal Arts</b>	<b>2,441</b>	<b>2,484</b>	<b>2,569</b>	<b>2,655</b>	<b>1,753</b>

Average Class Size	2003	2004	2005	2006	2007
Communication	27.5	28.9	28.7	28.5	30.3
English	16.0	16.1	16.2	15.5	15.5
Foreign Languages and Literatures	23.2	21.3	21.6	21.4	21.0
General Studies*	26.2	22.9	19.5	23.3	24.2
Health and Kinesiology	22.9	20.2	17.9	22.3	17.2
History	60.5	70.7	69.4	56.3	54.9
Philosophy	34.6	36.0	34.2	37.1	32.8
Political Science	44.4	50.0	49.6	52.8	60.4
Psychological Sciences	53.2	48.6	55.2	52.8	53.7
Sociology and Anthropology	58.0	61.4	57.0	53.8	52.1
Speech, Language, and Hearing Sciences	14.4	11.3	11.4	11.4	11.0
Visual & Performing Arts	19.6	20.0	18.3	18.7	20.7
<b>Total College of Liberal Arts</b>	<b>25.8</b>	<b>25.1</b>	<b>24.7</b>	<b>24.5</b>	<b>26.0</b>



\* General Studies include: Interdisciplinary Studies, Counseling & Student Services, & Women Studies

Source: Space Management & Academic Scheduling

*Weekly Class Hours per General Fund Faculty FTE*

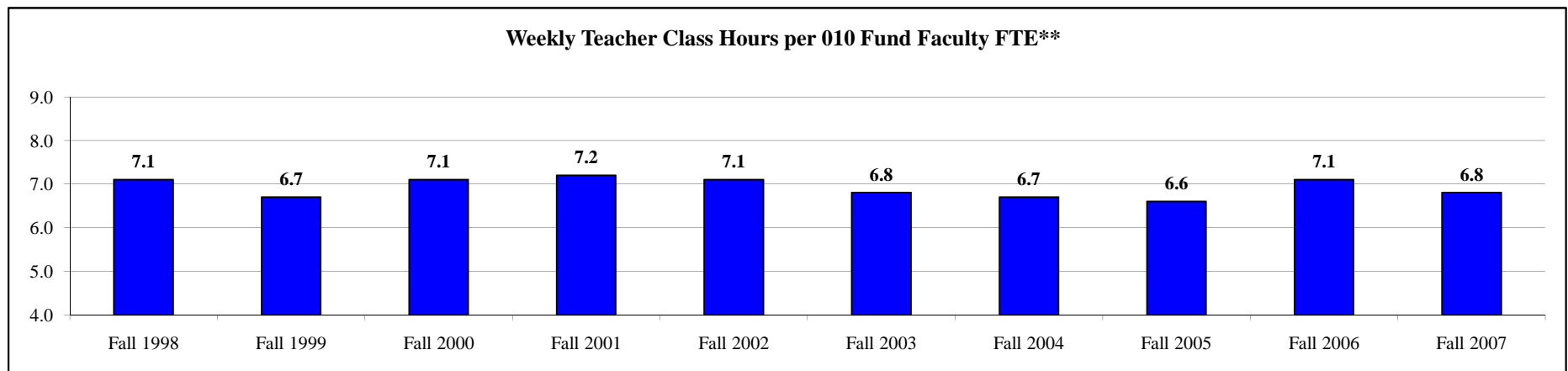
**Data Digest 2007-08**

*College of Liberal Arts*

Department	Fall 1998	Fall 1999	Fall 2000	Fall 2001	Fall 2002	Fall 2003	Fall 2004	Fall 2005	Fall 2006	Fall 2007
Communication	6.2	5.8	5.7	6.5	6.5	6.0	5.4	6.0	6.2	5.2
English	7.0	7.4	7.6	7.0	6.2	6.6	6.7	6.6	6.8	6.6
Foreign Languages and Literatures	6.8	7.9	7.9	8.5	8.1	7.9	7.4	7.5	7.8	8.0
General Studies	5.0	3.5	5.2	3.6	6.0	-	-	-	-	-
Health and Kinesiology	7.5	8.1	7.5	7.0	7.4	8.8	10.8*	11.4	9.1	8.7
History	4.8	5.7	5.4	5.6	4.8	4.9	5.0	5.5	5.7	5.5
Philosophy	3.9	4.8	5.0	4.2	5.1	4.3	3.8	3.7	3.5	4.1
Political Science	4.5	4.3	4.4	4.8	5.0	5.4	5.1	5.0	4.0	3.9
Psychological Sciences	5.8	5.1	5.0	5.3	5.1	4.4	4.4	4.1	5.3	4.4
Sociology and Anthropology	5.1	5.1	5.8	5.0	5.5	4.9	5.1	5.5	4.8	5.3
Speech, Language, and Hearing Sciences	6.7	5.6	7.0	6.2	5.3	5.1	4.7	3.5	11.8	8.5
Visual and Performing Arts	11.4	12.6	12.9	11.8	10.9	11.5	10.9	11.3	11.0	12.8
<b>College</b>	<b>7.1</b>	<b>6.7</b>	<b>7.1</b>	<b>7.2</b>	<b>7.1</b>	<b>6.8</b>	<b>6.7</b>	<b>6.6</b>	<b>7.1</b>	<b>6.8</b>

All Colleges	Fall 1998	Fall 1999	Fall 2000	Fall 2001	Fall 2002	Fall 2003	Fall 2004	Fall 2005	Fall 2006	Fall 2007
<b>High</b>	13.5	12.4	11.9	11.9	12.0	10.7	15.1	11.4	11.8	12.8
<b>Median</b>	<b>7.1</b>	<b>6.7</b>	<b>7.1</b>	<b>7.2</b>	<b>7.1</b>	<b>6.8</b>	<b>6.7</b>	<b>6.6</b>	<b>6.8</b>	<b>6.6</b>
<b>Low</b>	4.2	4.3	4.6	4.3	4.3	4.0	4.0	0.9	0.0	0.8



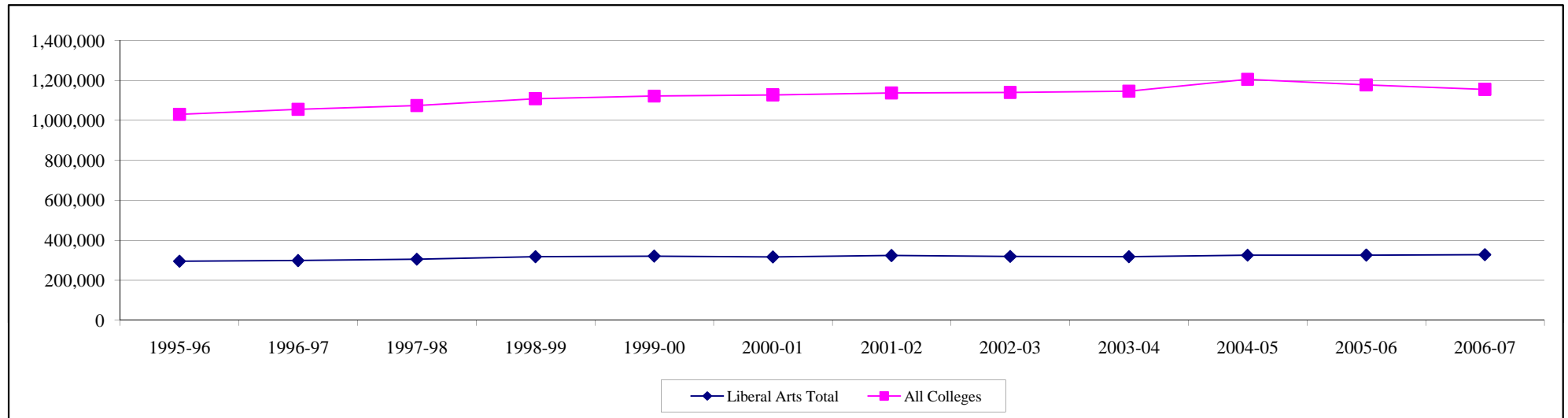
\* HK 201, 301, and 401 are excluded.

\*\* Beginning in 2003, these data include deans and department heads.

Organized classes only.

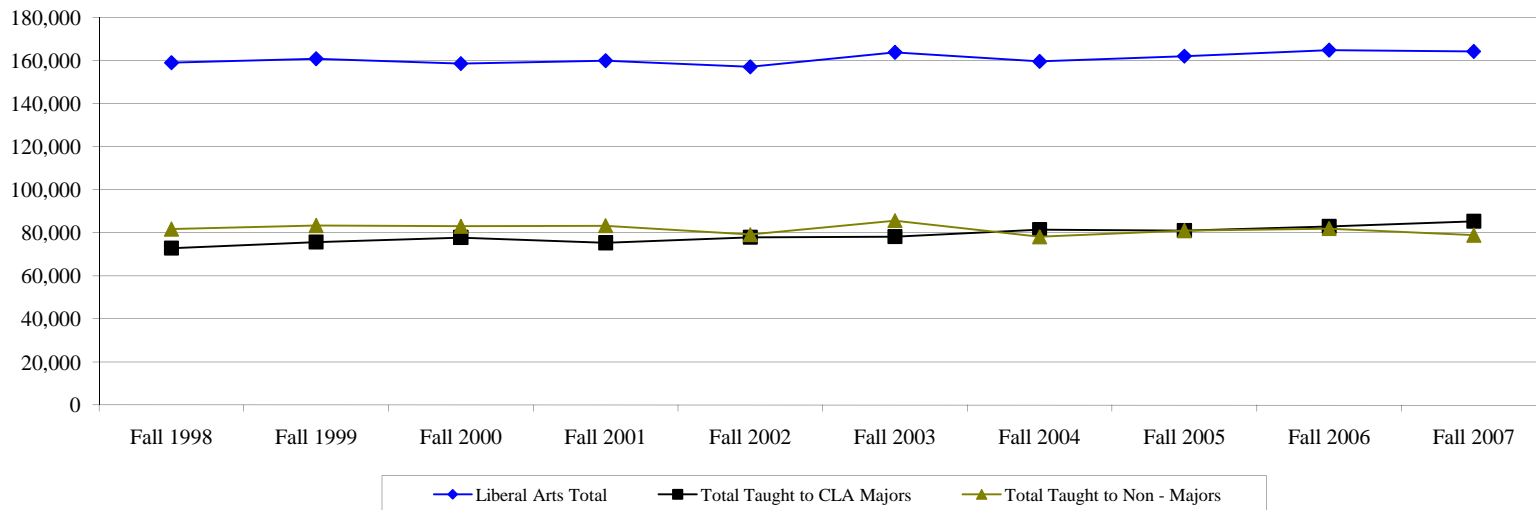
Source: Space Management & Academic Scheduling

	1995-96	1996-97	1997-98	1998-99	1999-00	2000-01	2001-02	2002-03	2003-04	2004-05	2005-06	2006-07
Liberal Arts Total	295,638	298,970	305,783	317,985	321,145	317,118	324,096	319,573	317,994	325,423	326,330	328,317
% of Academic Total	28.7%	28.7%	28.3%	28.5%	28.7%	28.6%	28.1%	28.0%	27.7%	27.0%	27.7%	28.4%
All Colleges	1,030,011	1,055,084	1,073,741	1,108,280	1,121,532	1,127,026	1,136,739	1,139,995	1,146,267	1,205,221	1,177,209	1,154,470



Source: Space Management & Academic Scheduling

Departments	Fall 1998	Fall 1999	Fall 2000	Fall 2001	Fall 2002	Fall 2003	Fall 2004	Fall 2005	Fall 2006	Fall 2007
Communication	21,572	22,576	22,366	22,110	20,741	20,736	19,113	20,143	21,245	21,094
English	31,895	33,397	31,575	31,156	30,123	24,903	24,761	25,058	26,497	25,419
Foreign Languages and Literatures	23,135	22,903	22,953	23,070	22,229	24,987	24,654	25,338	25,720	25,979
General Studies*	2,651	3,061	2,352	2,336	2,447	2,448	2,844	2,725	3,162	2,985
Health and Kinesiology	9,253	8,790	9,186	8,949	8,500	10,627	10,774	10,130	10,747	10,503
History	11,662	11,030	11,806	11,142	10,282	11,639	10,807	13,033	11,782	11,452
Philosophy	4,798	4,686	4,565	4,919	5,107	5,617	5,450	4,987	5,279	5,023
Political Science	6,168	6,063	6,127	6,812	7,268	8,337	7,871	8,101	7,058	7,389
Psychological Sciences	17,245	17,499	15,952	18,227	18,013	19,779	19,097	17,686	18,530	17,214
Sociology and Anthropology	10,632	10,574	11,182	10,968	11,094	12,202	13,348	14,499	14,485	15,481
Speech, Language, and Hearing Sciences	3,653	3,690	3,523	3,376	3,422	4,063	2,931	3,358	3,937	4,255
Visual and Performing Arts	16,428	16,697	17,111	16,985	17,923	18,608	18,052	17,083	16,539	17,540
<b>Liberal Arts Total</b>	<b>159,092</b>	<b>160,966</b>	<b>158,698</b>	<b>160,050</b>	<b>157,149</b>	<b>163,946</b>	<b>159,702</b>	<b>162,141</b>	<b>164,981</b>	<b>164,334</b>
<b>Total Taught to CLA Majors</b>	<b>72,919</b>	<b>75,679</b>	<b>77,877</b>	<b>75,367</b>	<b>77,938</b>	<b>78,260</b>	<b>81,511</b>	<b>81,071</b>	<b>82,981</b>	<b>85,362</b>
<b>% of Liberal Arts Total</b>	<b>46%</b>	<b>47%</b>	<b>49%</b>	<b>47%</b>	<b>50%</b>	<b>48%</b>	<b>51%</b>	<b>50%</b>	<b>50%</b>	<b>52%</b>
<b>Total Taught to Non - Majors</b>	<b>81,812</b>	<b>83,413</b>	<b>83,089</b>	<b>83,331</b>	<b>79,211</b>	<b>85,686</b>	<b>78,191</b>	<b>81,070</b>	<b>82,000</b>	<b>78,972</b>
<b>% of Liberal Arts Total</b>	<b>51%</b>	<b>52%</b>	<b>52%</b>	<b>52%</b>	<b>50%</b>	<b>52%</b>	<b>49%</b>	<b>50%</b>	<b>50%</b>	<b>48%</b>



\* General Studies include: Interdisciplinary Studies and Counseling & Student Services

Source: Space Management & Academic Scheduling

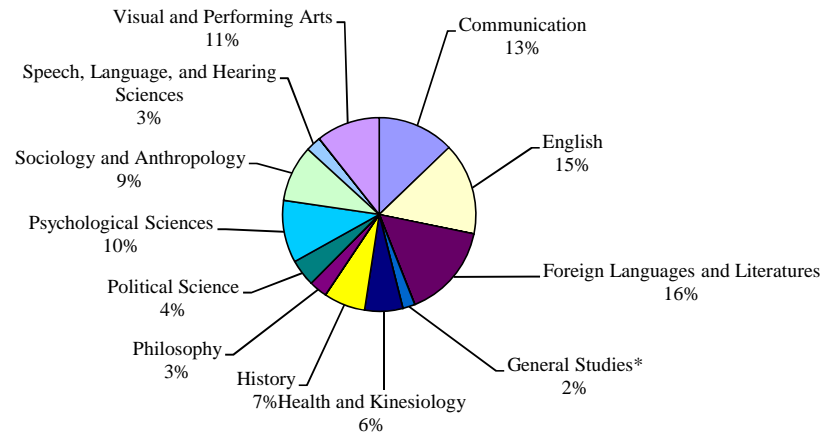


Type of Instruction	Tenure and tenure-track faculty	Non-tenure track appointment	Graduate student staff	All other instructors	Total	Percent of All WSCH
<b>College of Liberal Arts Total</b>						
<b>ORGANIZED CLASS INSTRUCTION</b>						
Non-laboratory class instruction						
Lecture	58,422	23,882	53,028	1,741	137,073	
Recitation	309	649	4,505	120	5,583	
<b>Total non-lab</b>	58,731	24,531	57,533	1,861	142,656	87%
<b>Percent of all non-lab WSCH</b>	41%	17%	40%	1%	100%	
Laboratory class instruction						
Laboratory	4,837	7,103	9,057	847	21,844	
Lab preparatory	-	-	-	-	-	
Clinics	4	102	-	134	240	
<b>Total lab</b>	4,841	7,205	9,057	981	22,084	13%
<b>Percent of all lab WSCH</b>	22%	33%	41%	4%	100%	
<b>ALL ORGANIZED CLASSES</b>	63,572	31,736	66,590	2,842	164,740	100%
Percent of all organized WSCH	39%	19%	40%	2%	100%	

Source: Space Management & Academic Scheduling

Departments	Tenure and tenure-track faculty	%	Non-tenure track appointment	%	Graduate student staff	%	All other instructors	%	Total	Pct of all WSCH
<i>Communication</i>	6,269	30%	2,177	10%	12,194	58%	453	2%	21,093	13%
<i>English</i>	6,286	25%	4,604	18%	14,504	57%	24	0%	25,418	15%
<i>Foreign Languages and Literatures</i>	3,680	14%	8,021	31%	14,169	55%	108	0%	25,978	16%
<i>General Studies*</i>	6	0%	905	27%	1,008	30%	1,468	43%	3,387	2%
<i>Health and Kinesiology</i>	2,393	23%	3,756	36%	3,779	36%	574	5%	10,502	6%
<i>History</i>	8,860	77%	144	1%	2,436	21%	12	0%	11,452	7%
<i>Philosophy</i>	3,147	63%	117	2%	1,759	35%	-	0%	5,023	3%
<i>Political Science</i>	5,770	78%	-	0%	1,620	22%	-	0%	7,390	4%
<i>Psychological Sciences</i>	9,653	56%	2,844	17%	4,662	27%	56	0%	17,215	10%
<i>Sociology and Anthropology</i>	8,392	54%	2,188	14%	4,790	31%	111	1%	15,481	9%
<i>Speech, Language, and Hearing Sciences</i>	2,706	64%	916	22%	599	14%	35	1%	4,256	3%
<i>Visual and Performing Arts</i>	6,410	37%	6,062	35%	5,068	29%	-	0%	17,540	11%
<b>Liberal Arts Total</b>	<b>63,572</b>	<b>39%</b>	<b>31,734</b>	<b>19%</b>	<b>66,588</b>	<b>40%</b>	<b>2,841</b>	<b>2%</b>	<b>164,735</b>	<b>100%</b>

WSCH as Percent of CLA Total



\* General Studies include: Interdisciplinary Studies and Counseling & Student Services

## All Campus

Summary Data for 2007 - Purdue University at W. Lafayette

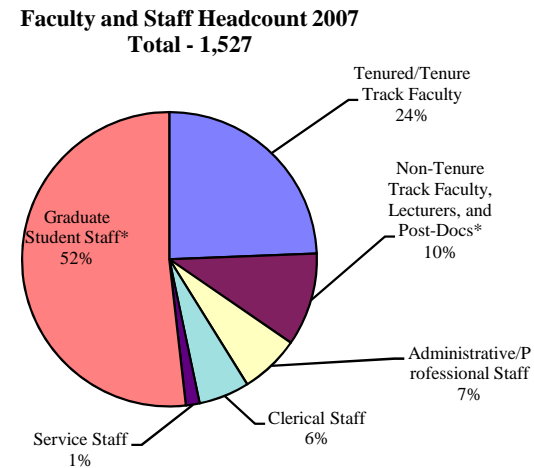
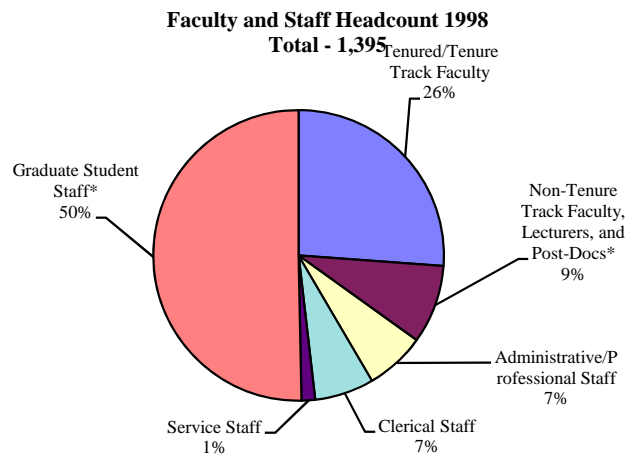
	<b>1 1a</b>		<b>2 2a</b>		<b>3 3a</b>		<b>4 4a</b>		<b>5 5a</b>		<b>6</b>	<b>7 7a</b>		<b>8 8a</b>		<b>9 9a</b>	
	WCH per FTE Gen. Fund 3F-8F Fac		WCH per FTE Gen. Fund Grad Asst		WSCH per FTE Gen. Fund 3F-8F Fac		WSCH per FTE Gen. Fund Grad Asst		% WSCH taught by Gen. Fund		% WSCH taught to non majors	Student Credit Hour per Gen. Fund FTE		Gen. Fund expenditures per credit hour		Sponsd Program exp per Ten/ Ten Trck FTE	
	Fall '07	02-07 Change	Fall '07	02-07 Change	Fall '07	02-07 Change	Fall '07	02-07 Change	3F-8F Faculty	Grad Asst	Fall '07	3F-8F Faculty	Grad Asst	2006-07	2002-03 in '06 \$	2006-07	FY 02-06 Change
<b>AGR</b>	5.2	-2%	1.9	+11%	188	+9%	25	-23%	87%	4%	33%	170	13	\$564	\$613	\$155,271	+29%
<b>CFS</b>	6.9	+2%	3.8	-25%	318	+38%	100	-54%	82%	13%	26%	314	72	\$210	\$218	\$202,963	+33%
<b>EDUC</b>	3.3	-22%	4.3	-22%	70	-16%	86	-40%	62%	36%	42%	115	91	\$299	\$222	\$31,334	-38%
<b>ENGR</b>	4.0	-26%	3.2	-14%	168	-11%	51	-31%	77%	16%	5%	156	22	\$621	\$477	\$248,778	+13%
<b>LA</b>	6.8	+0%	7.4	+2%	203	-4%	175	+0%	58%	40%	48%	193	163	\$158	\$152	\$24,643	+11%
<b>MGMT</b>	5.9	+10%	2.1	-30%	358	+13%	107	-26%	86%	11%	32%	364	112	\$211	\$176	\$57,188	-34%
<b>PNHS</b>	12.4	+80%	1.7	-32%	163	+2%	35	-21%	67%	4%	3%	132	21	\$403	\$441	\$199,013	+52%
<b>SCI</b>	3.6	-17%	6.6	+7%	208	-16%	184	+9%	51%	40%	77%	211	125	\$267	\$246	\$179,216	+3%
<b>TECH</b>	9.9	-9%	11.7	+2%	255	-12%	235	+9%	77%	18%	19%	228	139	\$193	\$178	\$15,669	+385%
<b>V MED</b>	16.7	+38%	4.4	+10%	153	+50%	76	+48%	82%	6%	3%	64	16	\$835	\$880	\$97,175	+3%
<b>TOTAL</b>	<b>6.5</b>	<b>+1%</b>	<b>5.7</b>	<b>-3%</b>	<b>203</b>	<b>-4%</b>	<b>138</b>	<b>-6%</b>	<b>66%</b>	<b>27%</b>	<b>42%</b>	<b>191</b>	<b>107</b>	<b>\$285</b>	<b>\$263</b>	<b>\$129,293</b>	<b>+16%</b>

Source: Space Management & Academic Scheduling



Classification	1998	1999	2000	2001	2002	2003	2004	2005	2006	2007
Tenured/Tenure Track Faculty	365	353	343	347	352	348	355	351	358	372
Non-Tenure Track Faculty, Lecturers, and Post-Docs*	122	128	125	130	132	129	124	156	156	156
Clinical/Professional										18
Continuing Lecturers										60
Limited-term Lecturers										52
Post-Doctoral										7
Research Faculty										1
Visiting Faculty										18
Administrative/Professional Staff	93	99	100	103	107	114	114	106	103	100
Clerical Staff	92	94	94	86	92	84	84	80	80	85
Service Staff	21	20	20	23	19	19	22	25	28	23
Graduate Student Staff*	702	727	748	748	787	773	795	777	788	791
Graduate Teaching Assistants										685
Graduate Research Assistants										90
Graduate Administrative/Professional										2
Graduate Lecturer										14
<b>Total</b>	<b>1,395</b>	<b>1,421</b>	<b>1,430</b>	<b>1,437</b>	<b>1,489</b>	<b>1,467</b>	<b>1,494</b>	<b>1,495</b>	<b>1,513</b>	<b>1,527</b>

\*Further breakdown of these staff types included beginning in 2007



Source: DSS Employee Workforce Data

<b>Department</b>	<b>2007</b>
Communication	
Graduate Teaching Asst/Graduate Lecturer	75
Graduate Research Asst.	7
Dean's Office	
Graduate Teaching Asst/Graduate Lecturer	1
Graduate Research Asst.	7
Graduate Administrative/Professional	1
English	
Graduate Teaching Asst/Graduate Lecturer	163
Graduate Research Asst.	4
Foreign Languages and Literatures	
Graduate Teaching Asst/Graduate Lecturer	120
Graduate Research Asst.	4
General Studies*	
Graduate Teaching Asst/Graduate Lecturer	39
Graduate Research Asst.	5
Graduate Administrative/Professional	1
Health and Kinesiology	
Graduate Teaching Asst/Graduate Lecturer	30
Graduate Research Asst.	5
History	
Graduate Teaching Asst/Graduate Lecturer	41
Graduate Research Asst.	7
Philosophy	
Graduate Teaching Asst/Graduate Lecturer	22
Graduate Research Asst.	6
Political Science	
Graduate Teaching Asst/Graduate Lecturer	26
Graduate Research Asst.	7
Psychological Sciences	
Graduate Teaching Asst/Graduate Lecturer	66
Graduate Research Asst.	15
Sociology and Anthropology	
Graduate Teaching Asst/Graduate Lecturer	50
Graduate Research Asst.	4
Speech, Language, and Hearing Sciences	
Graduate Teaching Asst/Graduate Lecturer	20
Graduate Research Asst.	19
Visual & Performing Arts	
Graduate Teaching Asst/Graduate Lecturer	46
<b>Total College of Liberal Arts</b>	<b>791</b>

\* General Studies include: Interdisciplinary Studies, Counseling & Student Services, Women Studies, & Afro-American Studies Center

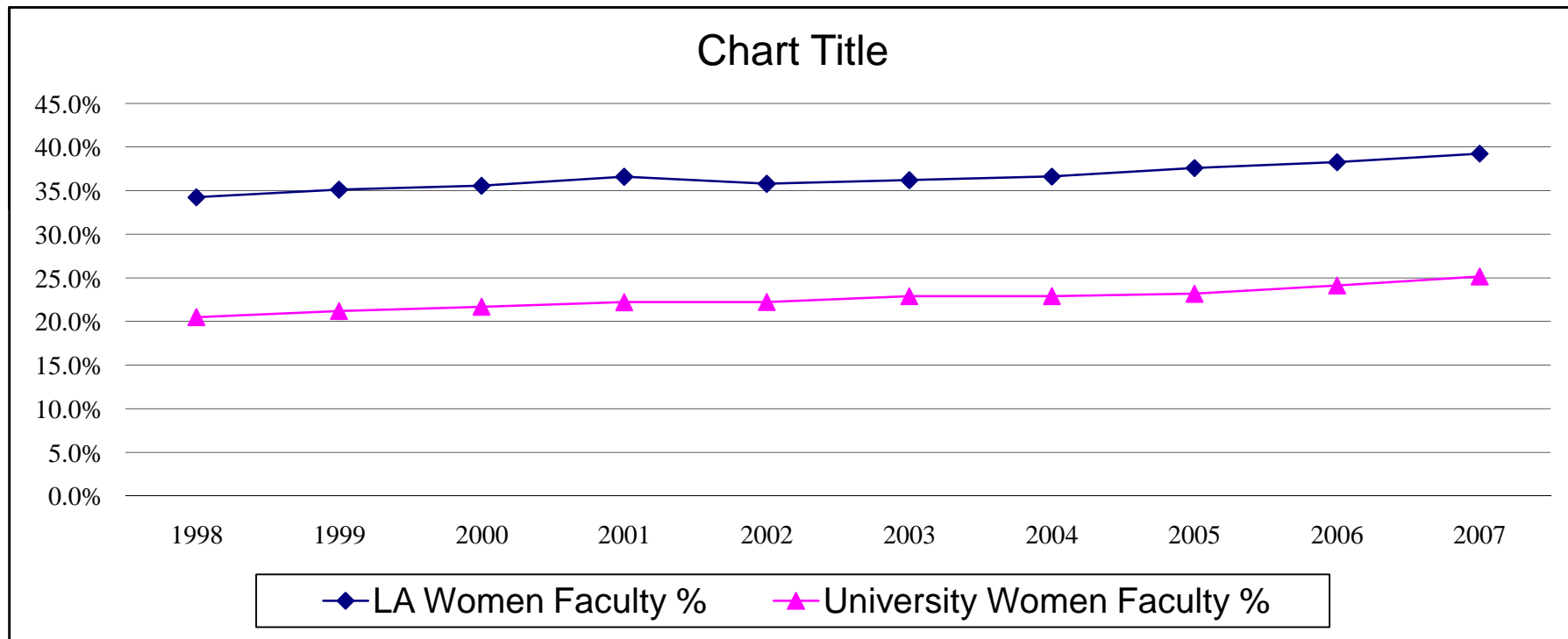
# Tenured and Tenure Track Faculty Headcount by Gender

(for Fall Semester in Academic Years)

Data Digest 2007-08

College of Liberal Arts

Gender	1998	1999	2000	2001	2002	2003	2004	2005	2006	2007
Men	240	229	221	220	226	222	225	219	221	226
Women	125	124	122	127	126	126	130	132	137	146
<b>Total Liberal Arts</b>	<b>365</b>	<b>353</b>	<b>343</b>	<b>347</b>	<b>352</b>	<b>348</b>	<b>355</b>	<b>351</b>	<b>358</b>	<b>372</b>
<b>Liberal Arts Women Faculty Percentage</b>	<b>34.2%</b>	<b>35.1%</b>	<b>35.6%</b>	<b>36.6%</b>	<b>35.8%</b>	<b>36.2%</b>	<b>36.6%</b>	<b>37.6%</b>	<b>38.3%</b>	<b>39.2%</b>
<b>University Women Faculty Percentage</b>	<b>20.5%</b>	<b>21.2%</b>	<b>21.7%</b>	<b>22.2%</b>	<b>22.2%</b>	<b>22.9%</b>	<b>22.9%</b>	<b>23.2%</b>	<b>24.1%</b>	<b>25.2%</b>



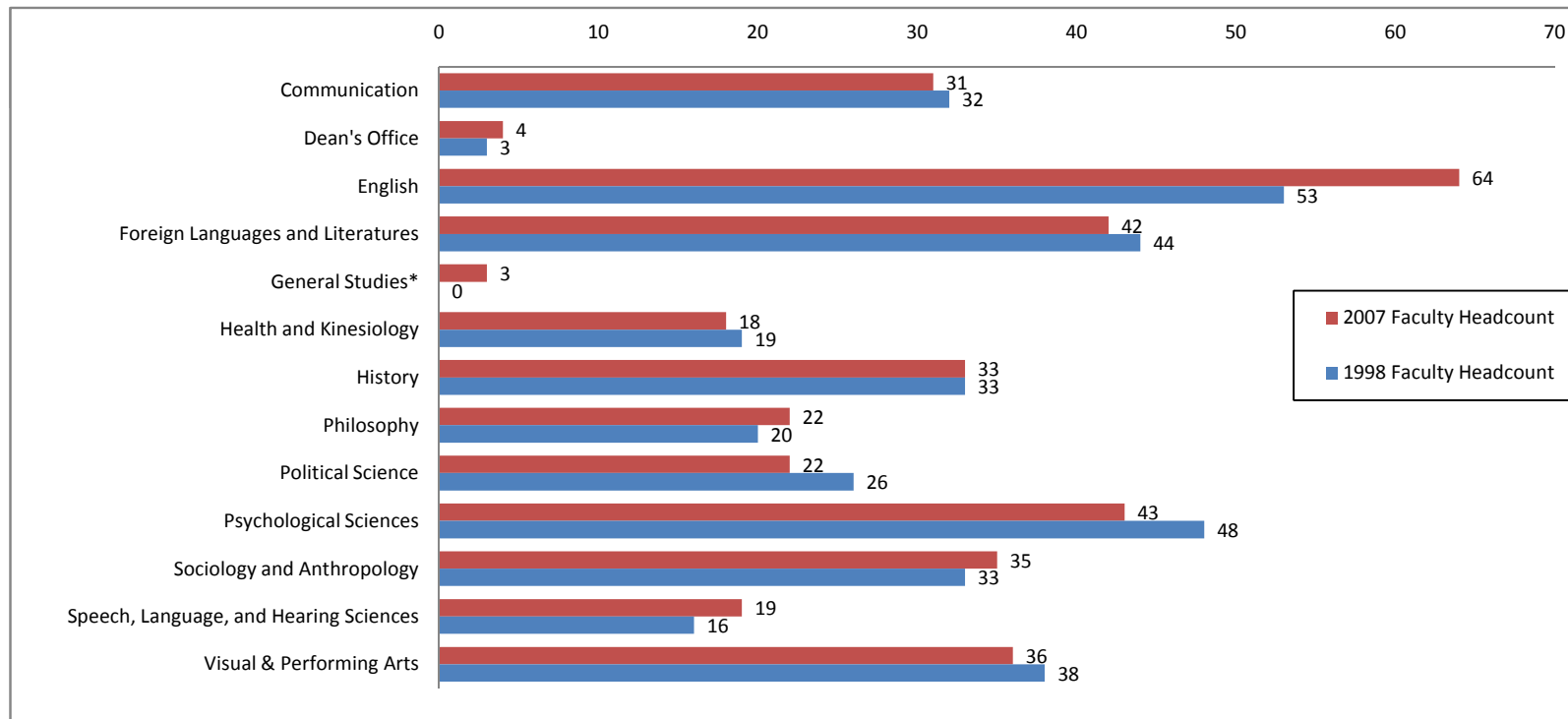
Source: DSS Employee Workforce Data



*Tenured and Tenure Track Faculty Headcount by Department  
(for Fall Semester in Academic Years)*

**Data Digest 2007-08**  
*College of Liberal Arts*

Department	1998	1999	2000	2001	2002	2003	2004	2005	2006	2007
Communication	32	33	33	28	30	28	28	31	29	31
Dean's Office	3	3	3	3	3	3	3	3	4	4
English	53	50	51	54	56	56	59	57	64	64
Foreign Languages and Literatures	44	45	43	38	41	40	42	41	42	42
General Studies*	0	0	0	0	0	1	1	1	2	3
Health and Kinesiology	19	17	16	17	16	16	15	12	16	18
History	33	32	32	32	32	28	27	29	30	33
Philosophy	20	17	17	19	18	18	18	19	20	22
Political Science	26	26	24	25	26	26	27	27	23	22
Psychological Sciences	48	47	45	47	45	47	48	44	44	43
Sociology and Anthropology	33	32	29	31	29	29	33	33	33	35
Speech, Language, and Hearing Sciences	16	15	15	16	16	17	17	18	18	19
Visual & Performing Arts	38	36	35	37	40	39	37	36	33	36
<b>Total College of Liberal Arts</b>	<b>365</b>	<b>353</b>	<b>343</b>	<b>347</b>	<b>352</b>	<b>348</b>	<b>355</b>	<b>351</b>	<b>358</b>	<b>372</b>



\* General Studies include: Interdisciplinary Studies, Counseling & Student Services, Women Studies, & Afro-American Studies Center

*Tenured & Tenure Track Faculty Headcount by Race/Ethnicity*  
 (for Fall Semester in Academic Years, revised for consistency with University Data Digest)

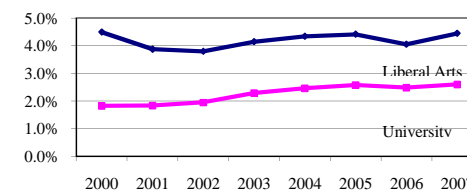
**Liberal Arts**

Race/Ethnicity	2000	2001	2002	2003	2004	2005	2006	2007
African American	15	13	13	14	15	15	14	16
Asian American	13	12	19	17	20	19	22	25
American Indian	3	2	2	2	1	1	1	0
Hispanic	7	7	7	9	10	10	10	11
White and Other	296	302	302	296	300	295	299	308
International	9	11	9	10	9	11	12	12
<b>Total Faculty</b>	<b>343</b>	<b>347</b>	<b>352</b>	<b>348</b>	<b>355</b>	<b>351</b>	<b>358</b>	<b>372</b>
<b>Domestic</b>								
African American	4.5%	3.9%	3.8%	4.1%	4.3%	4.4%	4.0%	4.4%
Asian American	3.9%	3.6%	5.5%	5.0%	5.8%	5.6%	6.4%	6.9%
American Indian	0.9%	0.6%	0.6%	0.6%	0.3%	0.3%	0.3%	0.0%
Hispanic	2.1%	2.1%	2.0%	2.7%	2.9%	2.9%	2.9%	3.1%
<i>Total Domestic Underrepresented</i>	<i>11.4%</i>	<i>10.1%</i>	<i>12.0%</i>	<i>12.4%</i>	<i>13.3%</i>	<i>13.2%</i>	<i>13.6%</i>	<i>14.4%</i>
White and Other	88.6%	89.9%	88.0%	87.6%	86.7%	86.8%	86.4%	85.6%
<b>International</b>	<b>2.6%</b>	<b>3.2%</b>	<b>2.6%</b>	<b>2.9%</b>	<b>2.5%</b>	<b>3.1%</b>	<b>3.4%</b>	<b>3.2%</b>

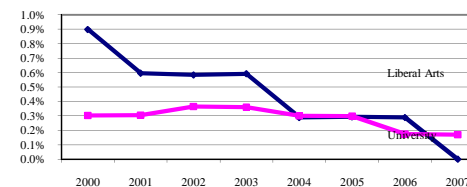
**University**

Race/Ethnicity	2000	2001	2002	2003	2004	2005	2006	2007
African American	30	30	32	38	41	43	43	46
Asian American	147	149	166	175	183	196	222	244
American Indian	5	5	6	6	5	5	3	3
Hispanic	26	29	28	33	35	35	38	42
White and Other	1440	1424	1412	1411	1402	1393	1425	1434
International	46	55	60	83	101	135	101	103
<b>Total Faculty</b>	<b>1,694</b>	<b>1,692</b>	<b>1,704</b>	<b>1,746</b>	<b>1,767</b>	<b>1,807</b>	<b>1,832</b>	<b>1,872</b>
<b>Domestic</b>								
African American	1.8%	1.8%	1.9%	2.3%	2.5%	2.6%	2.5%	2.6%
Asian American	8.9%	9.1%	10.1%	10.5%	11.0%	11.7%	12.8%	13.8%
American Indian	0.3%	0.3%	0.4%	0.4%	0.3%	0.3%	0.2%	0.2%
Hispanic	1.6%	1.8%	1.7%	2.0%	2.1%	2.1%	2.2%	2.4%
<i>Total Domestic Underrepresented</i>	<i>12.6%</i>	<i>13.0%</i>	<i>14.1%</i>	<i>15.2%</i>	<i>15.8%</i>	<i>16.7%</i>	<i>17.7%</i>	<i>18.9%</i>
White and Other	87.4%	87.0%	85.9%	84.8%	84.2%	83.3%	82.3%	81.1%
<b>International</b>	<b>2.7%</b>	<b>3.3%</b>	<b>3.5%</b>	<b>4.8%</b>	<b>5.7%</b>	<b>7.5%</b>	<b>5.5%</b>	<b>5.5%</b>

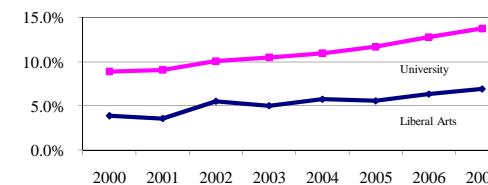
Percentage of African American Faculty



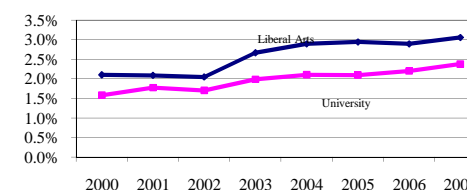
Percentage of American Indian Faculty



Percentage of Asian American Faculty



Percentage of Hispanic faculty



Source: DSS Employee Workforce Data

# Tenured & Tenure Track Faculty by Gender & Rank

Data Digest 2007-08

(for Fall Semester in Academic Years)

College of Liberal Arts

Rank	Gender	1998	1999	2000	2001	2002	2003	2004	2005	2006	2007
<b>Tenured and Tenure Track Faculty</b>											
Assistant Professors											
	Male	38	35	36	38	40	40	40	36	38	34
	Female	48	46	43	39	41	38	38	38	41	46
	<b>Total</b>	<b>86</b>	<b>81</b>	<b>79</b>	<b>77</b>	<b>81</b>	<b>78</b>	<b>78</b>	<b>74</b>	<b>79</b>	<b>80</b>
	% Male	44%	43%	46%	49%	49%	51%	51%	49%	48%	43%
	% Female	56%	57%	54%	51%	51%	49%	49%	51%	52%	58%
Associate Professors											
	Male	99	92	84	80	83	75	78	74	73	77
	Female	53	54	54	60	54	58	61	63	65	68
	<b>Total</b>	<b>152</b>	<b>146</b>	<b>138</b>	<b>140</b>	<b>137</b>	<b>133</b>	<b>139</b>	<b>137</b>	<b>138</b>	<b>145</b>
	% Male	65%	63%	61%	57%	61%	56%	56%	54%	53%	53%
	% Female	35%	37%	39%	43%	39%	44%	44%	46%	47%	47%
Professors											
	Male	103	102	101	102	103	107	107	109	110	115
	Female	24	24	25	28	31	30	31	31	31	32
	<b>Total</b>	<b>127</b>	<b>126</b>	<b>126</b>	<b>130</b>	<b>134</b>	<b>137</b>	<b>138</b>	<b>140</b>	<b>141</b>	<b>147</b>
	% Male	81%	81%	80%	78%	77%	78%	78%	78%	78%	78%
	% Female	19%	19%	20%	22%	23%	22%	22%	22%	22%	22%
<b>Summary</b>											
	<b>Male</b>	<b>240</b>	<b>229</b>	<b>221</b>	<b>220</b>	<b>226</b>	<b>222</b>	<b>225</b>	<b>219</b>	<b>221</b>	<b>226</b>
	<b>% of Total</b>	<b>68%</b>	<b>65%</b>	<b>61%</b>	<b>62%</b>	<b>66%</b>	<b>64%</b>	<b>63%</b>	<b>62%</b>	<b>62%</b>	<b>61%</b>
	<b>Female</b>	<b>125</b>	<b>124</b>	<b>122</b>	<b>127</b>	<b>126</b>	<b>126</b>	<b>130</b>	<b>132</b>	<b>137</b>	<b>146</b>
	<b>% of Total</b>	<b>35%</b>	<b>35%</b>	<b>33%</b>	<b>36%</b>	<b>37%</b>	<b>36%</b>	<b>37%</b>	<b>38%</b>	<b>38%</b>	<b>39%</b>
	<b>Grand Total</b>	<b>355</b>	<b>352</b>	<b>365</b>	<b>353</b>	<b>343</b>	<b>348</b>	<b>355</b>	<b>351</b>	<b>358</b>	<b>372</b>

Source: DSS Employee Workforce Data

*Tenured & Tenure Track Faculty by Race/Ethnicity & Rank*

**Data Digest 2007-08**

*(for Fall Semester in Academic Years)*

*College of Liberal Arts*

<b>Rank</b>	<b>Race/Ethnicity</b>	<b>1998</b>	<b>1999</b>	<b>2000</b>	<b>2001</b>	<b>2002</b>	<b>2003</b>	<b>2004</b>	<b>2005</b>	<b>2006</b>	<b>2007</b>
<b>Assistant Professors</b>											
	White/Other	62	64	57	54	59	55	53	47	54	55
	African American	5	5	6	6	5	5	6	6	3	6
	Hispanic	6	4	4	3	2	1	2	3	2	1
	Asian American	4	0	2	1	6	6	7	6	8	9
	American Indian	0	1	1	1	1	1	0	0	0	0
	International	4	7	8	10	8	10	9	11	12	9
	<b>Total Assistant Professors</b>	<b>81</b>	<b>81</b>	<b>78</b>	<b>75</b>	<b>81</b>	<b>78</b>	<b>77</b>	<b>73</b>	<b>79</b>	<b>80</b>
	<b>Underrepresented %</b>	<b>19%</b>	<b>12%</b>	<b>17%</b>	<b>15%</b>	<b>17%</b>	<b>17%</b>	<b>19%</b>	<b>21%</b>	<b>16%</b>	<b>20%</b>
<b>Associate Professors</b>											
	White/Other	134	124	119	124	117	115	119	116	113	115
	African American	6	5	5	4	6	6	7	7	9	7
	Hispanic	0	3	3	4	5	6	6	5	6	8
	Asian American	7	9	9	7	8	6	7	9	10	12
	American Indian	3	3	1	0	0	0	0	0	0	0
	International	2	2	1	1	1	0	0	0	0	3
	<b>Total Associate Professors</b>	<b>152</b>	<b>146</b>	<b>138</b>	<b>140</b>	<b>137</b>	<b>133</b>	<b>139</b>	<b>137</b>	<b>138</b>	<b>145</b>
	<b>Underrepresented %</b>	<b>11%</b>	<b>14%</b>	<b>13%</b>	<b>11%</b>	<b>14%</b>	<b>14%</b>	<b>14%</b>	<b>15%</b>	<b>18%</b>	<b>19%</b>
<b>Professors</b>											
	White/Other	121	120	120	123	126	126	127	131	132	138
	African American	3	3	3	3	2	3	2	2	2	3
	Hispanic	0	0	0	0	0	2	2	2	2	2
	Asian American	3	3	2	3	5	5	6	4	4	4
	American Indian	0	0	1	1	1	1	1	1	1	0
	International	0	0	0	0	0	0	0	0	0	0
	<b>Total Professors</b>	<b>127</b>	<b>126</b>	<b>126</b>	<b>130</b>	<b>134</b>	<b>137</b>	<b>138</b>	<b>140</b>	<b>141</b>	<b>147</b>
	<b>Underrepresented %</b>	<b>5%</b>	<b>5%</b>	<b>5%</b>	<b>5%</b>	<b>6%</b>	<b>8%</b>	<b>8%</b>	<b>6%</b>	<b>6%</b>	<b>6%</b>
<b>Summary</b>											
	White/Other	317	308	296	301	302	296	299	294	299	308
	African American	14	13	14	13	13	14	15	15	14	16
	Hispanic	6	7	7	7	7	9	10	10	10	11
	Asian American	14	12	13	11	19	17	20	19	22	25
	American Indian	3	4	3	2	2	2	1	1	1	0
	International	6	9	9	11	9	10	9	11	12	12
	<b>Total</b>	<b>360</b>	<b>353</b>	<b>342</b>	<b>345</b>	<b>352</b>	<b>348</b>	<b>354</b>	<b>350</b>	<b>358</b>	<b>372</b>
	White/Other	317	308	296	301	302	296	299	294	299	308
	Underrepresented	43	45	46	44	50	52	55	56	59	64
	<b>Total</b>	<b>360</b>	<b>353</b>	<b>342</b>	<b>345</b>	<b>352</b>	<b>348</b>	<b>354</b>	<b>350</b>	<b>358</b>	<b>372</b>
	<b>White/Other %</b>	<b>88%</b>	<b>87%</b>	<b>87%</b>	<b>87%</b>	<b>86%</b>	<b>85%</b>	<b>84%</b>	<b>84%</b>	<b>84%</b>	<b>83%</b>
	<b>Underrepresented %</b>	<b>12%</b>	<b>13%</b>	<b>13%</b>	<b>13%</b>	<b>14%</b>	<b>15%</b>	<b>16%</b>	<b>16%</b>	<b>16%</b>	<b>17%</b>

Source: DSS Employee Workforce Data & Affirmative Action Office

# Faculty and Staff Headcount by Gender

(for Fall Semester in Academic Years)

Data Digest 2007-08

College of Liberal Arts

Classification	Gender	1998	1999	2000	2001	2002	2003	2004	2005	2006	2007
Tenured and Tenure Track Faculty	Female	125	124	122	127	126	126	130	132	137	146
	Male	240	229	221	220	226	222	225	219	221	226
Non-Tenure Track Faculty, Lecturers & Post Docs	Female	78	87	90	95	93	84	87	110	108	109
	Male	44	41	35	35	39	45	37	46	48	47
Administrative/Professional	Female	73	76	75	78	82	87	85	77	76	71
	Male	20	23	25	25	25	27	29	29	27	29
Clerical	Female	92	94	94	86	91	84	84	80	80	84
	Male	-	-	-	-	1	-	-	-	-	1
Service	Female	8	9	9	12	9	7	11	12	19	15
	Male	13	11	11	11	10	12	11	13	9	8
Graduate Student Staff	Female	395	393	431	465	493	484	488	473	469	470
	Male	307	334	317	283	294	289	307	304	319	321
<b>Summary</b>	<b>Female</b>	771	783	821	863	894	872	885	884	889	895
	<b>Male</b>	624	638	609	574	595	595	609	611	624	632
<b>Grand Total</b>		<b>1,395</b>	<b>1,421</b>	<b>1,430</b>	<b>1,437</b>	<b>1,489</b>	<b>1,467</b>	<b>1,494</b>	<b>1,495</b>	<b>1,513</b>	<b>1,527</b>

Source: DSS Employee Workforce Data

<b>Classification</b>	<b>Race/Ethnicity</b>	<b>1998</b>	<b>1999</b>	<b>2000</b>	<b>2001</b>	<b>2002</b>	<b>2003</b>	<b>2004</b>	<b>2005</b>	<b>2006</b>	<b>2007</b>
Tenured and Tenure Track Faculty	White/Other	321	308	296	302	302	296	300	295	299	308
	African American	14	13	15	13	13	14	15	15	14	16
	Hispanic	6	7	7	7	7	9	10	10	10	11
	Asian American	14	12	13	12	19	17	20	19	22	25
	American Indian	3	4	3	2	2	2	1	1	1	0
	International	7	9	9	11	9	10	9	11	12	12
	<b>Subtotal</b>		<b>365</b>	<b>353</b>	<b>343</b>	<b>347</b>	<b>352</b>	<b>348</b>	<b>355</b>	<b>351</b>	<b>358</b>
Non-Tenure Track Faculty, Lecturers & Post Docs	White/Other	95	98	96	95	98	100	96	116	118	109
	African American	1	1	0	2	3	2	1	3	3	3
	Hispanic	7	6	8	6	9	10	10	10	13	12
	Asian American	4	4	4	8	6	5	5	8	9	8
	American Indian	0	0	0	0	0	0	0	1	1	1
	International	15	19	17	19	16	12	12	18	12	23
	<b>Subtotal</b>		<b>122</b>	<b>128</b>	<b>125</b>	<b>130</b>	<b>132</b>	<b>129</b>	<b>124</b>	<b>156</b>	<b>156</b>
A/P	White/Other	84	89	94	95	98	101	103	98	96	93
	African American	2	2	2	2	3	4	4	1	2	3
	Hispanic	2	3	2	1	2	2	2	1	1	2
	Asian American	5	5	2	2	2	3	3	2	1	0
	American Indian	0	0	0	1	0	0	0	1	1	1
	International	0	0	0	2	2	4	2	3	2	1
	<b>Subtotal</b>		<b>93</b>	<b>99</b>	<b>100</b>	<b>103</b>	<b>107</b>	<b>114</b>	<b>114</b>	<b>106</b>	<b>103</b>
Clerical	White/Other	86	87	86	79	87	79	79	74	73	78
	African American	2	2	2	1	1	1	1	1	1	1
	Hispanic	2	2	2	1	0	0	0	1	2	2
	Asian American	2	3	4	4	3	3	3	3	3	3
	American Indian	0	0	0	1	1	1	1	1	1	1
	International	0	0	0	0	0	0	0	0	0	0
	<b>Subtotal</b>		<b>92</b>	<b>94</b>	<b>94</b>	<b>86</b>	<b>92</b>	<b>84</b>	<b>84</b>	<b>80</b>	<b>80</b>
Service	White/Other	18	18	18	20	17	16	20	23	25	21
	African American	0	0	0	0	0	0	0	0	0	0
	Hispanic	1	0	0	0	0	0	0	0	0	0
	Asian American	1	1	1	1	1	2	2	2	3	2
	American Indian	1	1	1	1	1	1	0	0	0	0
	International	0	0	0	1	0	0	0	0	0	0
	<b>Subtotal</b>		<b>21</b>	<b>20</b>	<b>20</b>	<b>23</b>	<b>19</b>	<b>19</b>	<b>22</b>	<b>25</b>	<b>28</b>
Graduate Students	White/Other	448	460	460	461	485	482	479	479	501	512
	African American	26	28	24	24	28	28	29	30	40	33
	Hispanic	27	23	21	25	24	17	19	20	17	24
	Asian American	19	20	17	13	15	11	13	14	15	24
	American Indian	5	4	4	3	4	2	2	2	1	2
	International	177	192	222	222	231	233	253	232	214	196
	<b>Subtotal</b>		<b>702</b>	<b>727</b>	<b>748</b>	<b>748</b>	<b>787</b>	<b>773</b>	<b>795</b>	<b>777</b>	<b>788</b>
<b>Grand Total</b>		<b>1,395</b>	<b>1,421</b>	<b>1,430</b>	<b>1,437</b>	<b>1,489</b>	<b>1,467</b>	<b>1,494</b>	<b>1,495</b>	<b>1,513</b>	<b>1,527</b>
<b>Total Underrepresented Staff</b>		143	140	131	128	142	132	140	145	160	173
<b>Underrepresented Staff as Percent of Total</b>		<b>12.0%</b>	<b>11.7%</b>	<b>11.1%</b>	<b>10.8%</b>	<b>11.5%</b>	<b>10.9%</b>	<b>11.5%</b>	<b>11.8%</b>	<b>12.6%</b>	<b>13.4%</b>

Source: DSS Employee Workforce Data & Affirmative Action Office

<b>Searches/Hires/Resignations</b>	<b>1998-99</b>	<b>1999-00</b>	<b>2000-01</b>	<b>2001-02</b>	<b>2002-03</b>	<b>2003-04</b>	<b>2004-05</b>	<b>2005-06</b>	<b>2006-07</b>	<b>2007-08</b>
Searches Undertaken	14	23	27	21	17	23	23	23	26	27
Searches Completed*	17	24	24	24	18	21	24	29	28	28
Number of Men Faculty Hired	6 (35%)	15 (63%) #	11 (46%)	15 (63%) #	8 (44%)	11 (52%)	13 (54%)	13 (45%)	15 (54%)	8 (29%)
Number of Women Faculty Hired	11 (65%)	9 (38%) #	13 (54%)	9 (38%) #	10 (56%)	10 (48%)	11 (46%)	16 (55%)	13 (46%)	20 (71%)
Underrepresented Faculty Hired	4	8	4	6	5	6	6	6	4	6
Resignation/Retirements	26	28	27	15	20	14	21	18	15	13
Men Faculty	17 (65%)	19(68%)	16 (59%)	7 (47%)	13 (65%)	10 (71%)	12 (57%)	12 (67%)	8 (53%)	7 (54%)
Women Faculty	9 (35%)	9 (32%)	11 (41%)	8 (53%)	7 (35%)	4 (29%)	9 (43%)	6 (33%)	7 (47%)	6 (46%)

Figures include deans and department heads.

\* including a target of opportunity/bridge or spousal hire

# percentages do not total to 100 due to rounding

Source: Liberal Arts Dean's Office



	TO ASSOCIATE								
	MEN			WOMEN			UNDERREPRESENTED GROUPS		
	<u>Nominated</u>	<u>Promoted</u>	<u>Success Rate</u>	<u>Nominated</u>	<u>Promoted</u>	<u>Success Rate</u>	<u>Nominated</u>	<u>Promoted</u>	<u>Success Rate</u>
<b>2003-04</b>	5	2	40%	5	4	80%	2	2	100%
<b>2004-05</b>	6	5	83%	6	6	100%	2	2	100%
<b>2005-06</b>	4	4	100%	5	5	100%	5	5	100%
<b>2006-07</b>	12	10	83%	7	6	86%	5	4	80%
<b>2007-08</b>	5	5	100%	7	7	100%	4	4	100%
<b>Total</b>	32	26	81%	30	28	93%	18	17	94%

	TO PROFESSOR								
	MEN			WOMEN			UNDERREPRESENTED GROUPS		
	<u>Nominated</u>	<u>Promoted</u>	<u>Success Rate</u>	<u>Nominated</u>	<u>Promoted</u>	<u>Success Rate</u>	<u>Nominated</u>	<u>Promoted</u>	<u>Success Rate</u>
<b>2003-04</b>	2	2	100%	3	2	67%	0	0	-
<b>2004-05</b>	5	5	100%	1	1	100%	0	0	-
<b>2005-06</b>	4	3	75%	1	1	100%	1	0	0%
<b>2006-07</b>	8	8	100%	4	2	50%	0	0	-
<b>2007-08</b>	2	1	50%	6	5	83%	2	2	100%
<b>Total</b>	21	19	90%	15	11	73%	3	2	67%

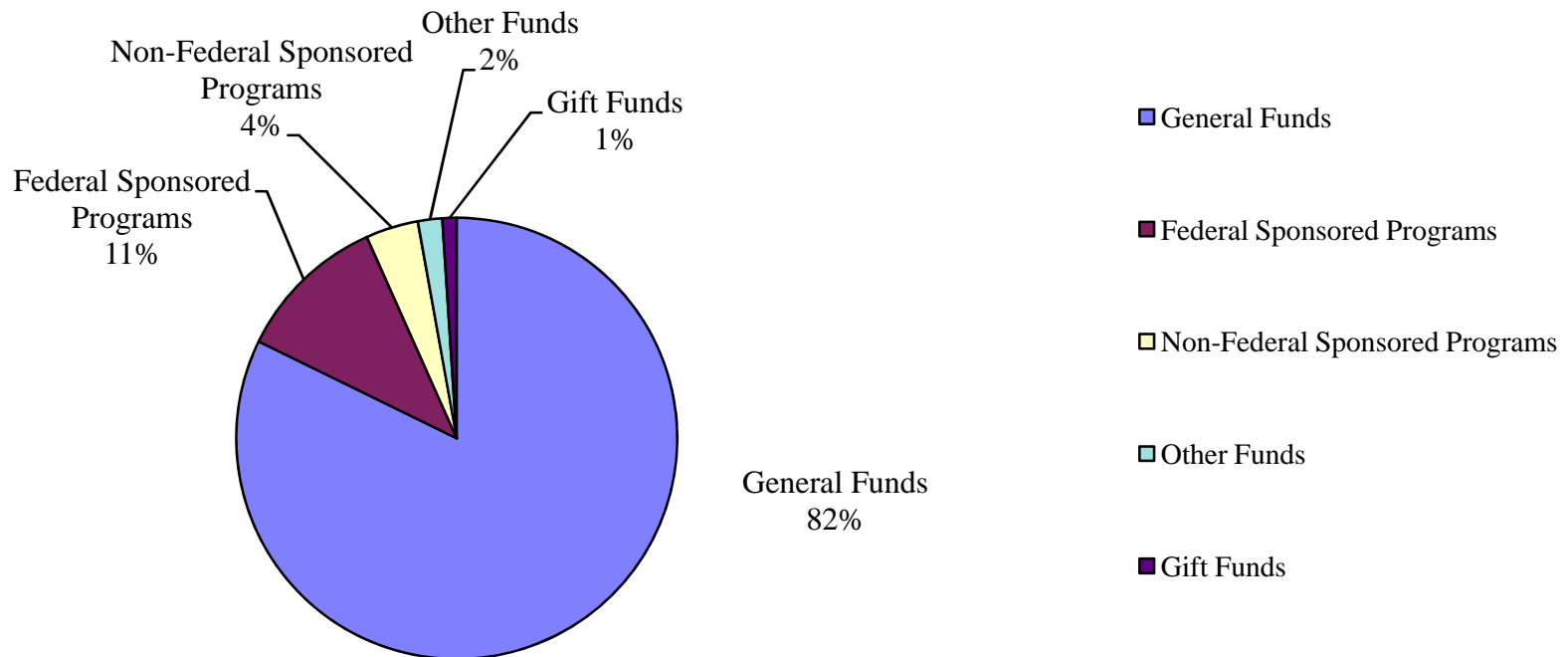
	COMBINED RANK								
	MEN			WOMEN			UNDERREPRESENTED GROUPS		
	<u>Nominated</u>	<u>Promoted</u>	<u>Success Rate</u>	<u>Nominated</u>	<u>Promoted</u>	<u>Success Rate</u>	<u>Nominated</u>	<u>Promoted</u>	<u>Success Rate</u>
<b>2003-04</b>	7	4	57%	8	6	75%	2	2	100%
<b>2004-05</b>	11	10	91%	7	7	100%	2	2	100%
<b>2005-06</b>	8	7	88%	6	6	100%	6	5	83%
<b>2006-07</b>	20	18	90%	11	8	73%	5	4	80%
<b>2007-08</b>	7	6	86%	13	12	92%	6	6	100%
<b>Total</b>	53	45	85%	45	39	87%	21	19	90%

Source: Liberal Arts Dean's Office



Source	2001-02	2002-03	2003-04	2004-05	2005-06	2006-07
<b>General Funds</b>	\$39,703,435	\$41,492,091	\$43,001,862	\$45,689,778	\$48,489,619	\$51,175,069
<b>Federal Sponsored Programs</b>	\$5,403,360	\$6,521,506	\$6,981,549	\$8,122,749	\$6,811,765	\$6,891,698
<b>Non-Federal Sponsored Programs</b>	\$2,015,378	\$2,666,096	\$2,655,745	\$2,361,412	\$2,395,260	\$2,395,100
<b>Other Funds</b>	\$1,709,845	\$1,863,227	\$2,013,498	\$2,135,775	\$1,898,915	\$1,110,995
<b>Gift Funds</b>	\$854,087	\$1,277,915	\$478,958	\$640,242	\$971,047	\$654,409
<b>Total</b>	<b>\$49,686,105</b>	<b>\$53,820,835</b>	<b>\$55,131,612</b>	<b>\$58,949,956</b>	<b>\$60,566,606</b>	<b>\$62,227,271</b>

2006-07 Expenditures



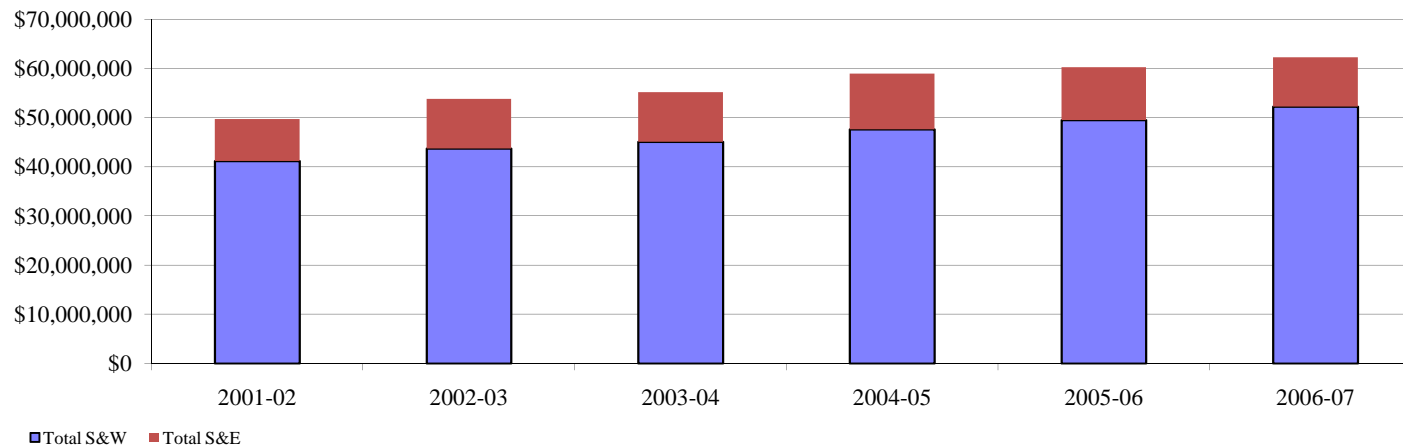
Source: DSS Transaction Summary Data/SAP All Postings Report

*Total Annual Expenditures by Category*

**Data Digest 2007-08**

*College of Liberal Arts*

Category	Source	2001-02	2002-03	2003-04	2004-05	2005-06	2006-07
<b>S&amp;W</b>	General Funds	\$37,022,516	\$38,870,188	\$40,015,048	\$42,206,064	\$44,392,109	\$46,578,837
	Federal Sponsored Programs	\$2,637,061	\$3,039,154	\$3,405,168	\$3,775,872	\$3,389,367	\$3,806,630
	Non-Federal Sponsored Programs	\$998,681	\$1,228,238	\$1,074,096	\$1,069,892	\$923,690	\$1,220,739
	Gift Funds	\$171,311	\$153,913	\$120,996	\$141,963	\$206,320	\$206,320
	Other Funds	\$360,318	\$442,145	\$490,534	\$448,616	\$581,608	\$391,830
<b>Total S&amp;W</b>		<b>\$41,189,887</b>	<b>\$43,733,639</b>	<b>\$45,105,842</b>	<b>\$47,642,407</b>	<b>\$49,493,094</b>	<b>\$52,204,357</b>
<b>S&amp;E</b>	General Funds	\$2,680,919	2,621,903	\$2,986,814	\$3,483,714	\$4,097,510	\$4,596,232
	Federal Sponsored Programs	\$2,766,299	\$3,482,351	\$3,576,381	\$4,346,877	\$3,422,398	\$3,085,068
	Non-Federal Sponsored Programs	\$1,016,696	\$1,437,857	\$1,583,198	\$1,291,520	\$1,471,570	\$1,174,360
	Gift Funds	\$682,776	\$1,124,002	\$357,512	\$498,279	\$448,090	\$448,090
	Other Funds	\$1,349,528	\$1,421,082	\$1,522,964	\$1,687,159	\$1,317,307	\$719,165
<b>Total S&amp;E</b>		<b>\$8,496,218</b>	<b>\$10,087,194</b>	<b>\$10,026,869</b>	<b>\$11,307,549</b>	<b>\$10,756,875</b>	<b>\$10,022,914</b>
<b>Total</b>		<b>\$49,686,105</b>	<b>\$53,820,833</b>	<b>\$55,132,711</b>	<b>\$58,949,956</b>	<b>\$60,249,968</b>	<b>62,227,271</b>



Source: DSS Transaction Summary Data/SAP All Postings Report

# Total General Fund Expenditures

Data Digest 2007-08

College of Liberal Arts

Category	Type	2001-02	2002-03	2003-04	2004-05	2005-06	2006-07
<b>S&amp;W</b>	Faculty	\$20,813,651	\$21,978,790	\$22,891,369	\$24,218,800	\$25,827,266	\$27,363,789
	Visiting Faculty/Lecturer/etc.	\$2,138,952	\$2,142,030	\$2,120,352	\$2,342,602	\$2,965,253	\$3,397,720
	Post Doctoral						\$10,377
	A/P	\$3,653,318	\$3,806,890	\$4,034,432	\$4,178,987	\$4,022,047	\$3,579,537
	Clerical	\$1,840,398	\$1,864,765	\$1,837,271	\$1,973,625	\$1,900,719	\$2,087,104
	Service	\$368,600	\$333,221	\$344,050	\$344,553	\$347,348	\$445,670
	Graduate Students	\$8,052,053	\$8,586,539	\$8,605,382	\$8,942,117	\$9,139,924	\$9,653,760
	Students	\$155,545	\$157,953	\$182,192	\$205,379	\$189,552	\$40,880
<b>Total S&amp;W</b>		<b>\$37,022,516</b>	<b>\$38,870,188</b>	<b>\$40,015,048</b>	<b>\$42,206,064</b>	<b>\$44,392,109</b>	<b>\$46,578,837</b>
<b>S&amp;E</b>	Equipment	\$1,124,160	\$726,103	\$896,379	\$887,509	\$1,434,824	\$1,072,215
	Maintenance	\$70,698	\$123,333	\$128,593	\$134,090	\$106,442	\$82,627
	Postage & Shipping	\$65,408	\$65,758	\$88,382	\$87,572	\$72,211	\$77,186
	Printing & Office Supplies	\$379,696	\$416,665	\$488,393	\$544,589	\$536,629	\$507,375
	Rental & Maintenance	\$51,788	\$41,879	\$95,464	\$82,755	\$73,827	\$92,956
	Scholarships & Awards	\$4,687	\$36,010	\$4,382	\$35,638	\$51,351	\$55,884
	Services & Fees	\$237,164	\$340,271	\$246,181	\$293,488	\$361,109	\$495,123
	Supplies	\$80,124	\$100,161	\$56,972	\$89,079	\$223,393	\$174,702
	Telephone & Tolls	\$327,910	\$336,027	\$356,592	\$376,214	\$414,005	\$419,553
	Travel	\$339,284	\$435,696	\$625,476	\$952,780	\$823,719	\$1,461,613
	Other S&E						\$156,998
<b>Total S&amp;E</b>		<b>\$2,680,919</b>	<b>\$2,621,903</b>	<b>\$2,986,814</b>	<b>\$3,483,714</b>	<b>\$4,097,510</b>	<b>\$4,596,232</b>
<b>Total</b>		<b>\$39,703,435</b>	<b>\$41,492,091</b>	<b>\$43,001,862</b>	<b>\$45,689,778</b>	<b>\$48,489,619</b>	<b>\$51,175,069</b>

Source: DSS Transaction Summary Data/SAP All Postings Report

*Total Gift Fund Expenditures*

**Data Digest 2007-08**

*College of Liberal Arts*

<b>Category</b>	<b>Type</b>	<b>2001-02</b>	<b>2002-03</b>	<b>2003-04</b>	<b>2004-05</b>	<b>2005-06</b>	<b>2006-07</b>
<b>S&amp;W</b>	Faculty	\$79,783	\$38,772	\$30,489	\$32,056	\$66,715	\$89,591
	Visiting Faculty				\$2,635	\$10,000	
	A/P	\$16,573	\$16,904	\$26,602	\$34,249	\$21,856	\$23,260
	Clerical	\$5,824	\$5,991	\$7,096	\$5,009	\$5,233	\$6,364
	Service & Other	\$15,486	\$15,606	\$4,614	\$14,987	\$18,200	\$26,286
	Graduate Students	\$18,735	\$45,647	\$27,577	\$22,540	\$19,537	\$19,015
	Students	\$1,080	\$910	\$684	\$4,560	\$25,828	\$628
	Fringe Benefits	\$33,831	\$30,085	\$23,934	\$25,927	\$36,130	\$41,175
<b>Total S&amp;W</b>		<b>\$171,311</b>	<b>\$153,913</b>	<b>\$120,996</b>	<b>\$141,963</b>	<b>\$203,499</b>	<b>\$206,320</b>
<b>S&amp;E</b>	Equipment	\$26,391	\$17,623	\$34,137	\$194,858	\$35,347	\$141,260
	Maintenance	\$12,552	\$4,732	\$12,677	\$3,219	\$2,765	\$8,700
	Postage & Shipping	\$23,627	\$24,952	\$5,756	\$7,024	\$10,654	\$12,392
	Printing & Office Supplies	\$153,072	\$86,927	\$33,776	\$35,241	\$49,430	\$40,151
	Rental & Maintenance	\$1,668	\$2,905	\$5,277	\$2,406	\$4,868	\$2,376
	Scholarships & Awards	\$5,494	-\$1,600	\$26,589	\$30,468	\$11,173	\$18,712
	Services & Fees	\$30,177	\$28,471	\$48,579	\$42,142	\$70,670	\$41,631
	Supplies	\$5,869	\$5,612	\$5,162	\$11,617	\$25,519	\$18,100
	Telephone & Tolls	\$2,722	\$4,374	\$4,396	\$5,360	\$7,311	\$6,505
	Travel	\$32,354	\$54,412	\$79,344	\$83,063	\$106,280	\$129,757
	Other S&E	\$388,847	\$895,594	\$101,819	\$82,881	\$443,531	\$28,506
	<b>Total S&amp;E</b>		<b>\$682,776</b>	<b>\$1,124,002</b>	<b>\$357,512</b>	<b>\$498,279</b>	<b>\$767,548</b>
<b>Total</b>		<b>\$521,170</b>	<b>\$1,277,915</b>	<b>\$478,508</b>	<b>\$640,242</b>	<b>\$971,047</b>	<b>\$654,409</b>

**Note:** Fund 707 is excluded from data

Source: DSS Transaction Summary Data/SAP All Postings Report

*Total Sponsored Program Expenditures*

**Data Digest 2007-08**

*College of Liberal Arts*

<b>Category</b>	<b>Type</b>	<b>2000-01</b>	<b>2001-02</b>	<b>2002-03</b>	<b>2003-04</b>	<b>2004-05</b>	<b>2005-06</b>	<b>2006-07</b>
<b>S&amp;W</b>	Faculty	\$1,169,850	\$1,146,659	\$1,405,000	\$1,369,454	\$1,495,475	\$1,425,745	\$1,959,535
	Visiting Faculty/Lecturer/etc.	\$14,774	\$9,939	\$18,600	\$11,246	\$18,850		\$10,565
	Post Doctoral	\$26,260	\$19,578	\$9,800	\$24,470	\$16,396	\$17,107	\$71,561
	A/P	\$180,305	\$233,499	\$294,246	\$500,472	\$492,801	\$398,796	\$288,775
	Clerical	\$801	\$2,723	\$16,028	\$10,451	\$2,460	\$2,023	\$10,306
	Service	\$113,354	\$112,600	\$136,042	\$174,203	\$175,409	\$177,097	\$264,628
	Graduate Students	\$1,289,172	\$1,369,720	\$1,389,595	\$1,345,209	\$1,454,125	\$1,285,742	\$1,414,825
	Students*	\$111,035	\$95,844	\$188,785	\$160,510	\$193,258	\$151,524	\$1,148
	Fringe Benefits	\$595,863	\$645,180	\$807,937	\$879,449	\$993,134	\$855,023	\$1,005,646
	Instructor			\$1,360	\$3,800	\$3,856	\$0	\$381
<b>Total S&amp;W</b>		<b>\$3,501,416</b>	<b>\$3,635,742</b>	<b>\$4,267,393</b>	<b>\$4,479,264</b>	<b>\$4,845,764</b>	<b>\$4,313,057</b>	<b>\$5,027,370</b>
<b>S&amp;E</b>	Equipment	\$211,559	\$347,502	\$308,293	\$264,185	\$370,471	\$328,830	\$89,415
	Maintenance	\$7,402	\$10,350	\$5,232	\$15,086	\$7,387	\$5,391	\$3,989
	Postage & Shipping	\$10,386	\$9,113	\$13,129	\$55,009	\$26,316	\$10,510	\$8,978
	Printing & Office Supplies	\$47,048	\$56,426	\$57,342	\$113,560	\$63,803	\$31,057	\$22,378
	Rental & Maintenance	\$21,940	\$744	\$14,553	\$18,413	\$22,624	\$22,468	\$12,172
	Scholarships & Awards	\$683,871	\$905,967	\$967,159	\$1,316,246	\$1,184,587	\$1,245,140	\$911,690
	Services & Fees	\$467,417	\$795,363	\$1,542,535	\$1,159,856	\$1,444,783	\$883,010	\$721,338
	Supplies	\$139,167	\$141,916	\$184,821	\$171,650	\$190,620	\$254,823	\$207,802
	Telephone & Tolls	\$6,279	\$6,398	\$6,777	\$5,018	\$7,582	\$6,122	\$5,326
	Travel	\$180,843	\$139,653	\$226,118	\$296,016	\$380,863	\$239,151	\$188,375
	Other S&E	\$1,455	\$18,407	\$72,921	\$26,957	\$37,296	\$49,501	\$51,181
	F&A	\$1,252,411	\$1,351,157	\$1,521,326	\$1,717,581	\$1,902,066	\$1,817,965	\$2,036,784
<b>Total S&amp;E</b>		<b>\$3,029,777</b>	<b>\$3,782,996</b>	<b>\$4,920,206</b>	<b>\$5,159,577</b>	<b>\$5,638,398</b>	<b>\$4,893,968</b>	<b>\$4,259,428</b>
<b>Total</b>		<b>\$6,531,193</b>	<b>\$7,418,738</b>	<b>\$9,187,599</b>	<b>\$9,638,841</b>	<b>\$10,484,162</b>	<b>\$9,207,025</b>	<b>\$9,286,798</b>

\*Student wages included in Service category with conversion to SAP in 2007

Source: DSS Transaction Summary Data/SAP All Postings Report

*Expenditures by Type & Source*

**Data Digest 2007-08**

*College of Liberal Arts*

<b>Category</b>	<b>Type</b>	<b>General Funds</b>	<b>Federal Sponsored Programs</b>	<b>Non-Federal Sponsored Programs</b>	<b>Gift Funds</b>	<b>Other Funds</b>	<b>Total 2006-07</b>
<b>S&amp;W</b>	Faculty	\$27,363,789	\$1,644,313	\$315,223	\$89,591	\$96,145	\$29,509,060
	Visiting Faculty	\$3,397,720	\$10,565				\$3,408,285
	Post Doctoral	\$10,377	\$71,561			\$15,000	\$96,938
	A/P	\$3,579,537	\$270,130	\$18,645	\$23,260	\$28,789	\$3,920,362
	Clerical	\$2,087,104	-\$3,743	\$14,049	\$6,364	\$43,358	\$2,147,132
	Service	\$445,670	\$241,135	\$23,493	\$26,286	\$104,203	\$840,787
	Graduate Students	\$9,653,760	\$691,315	\$723,510	\$19,015	\$12,215	\$11,099,815
	Instructor			\$381		\$6,144	\$6,525
	Students	\$40,880	\$849	\$298	\$628	\$6,755	\$49,411
	Fringe Benefits		\$880,506	\$125,140	\$41,175	\$79,222	\$1,126,043
<b>Total S&amp;W</b>		<b>\$46,578,837</b>	<b>\$3,806,630</b>	<b>\$1,220,739</b>	<b>\$206,320</b>	<b>\$391,830</b>	<b>\$52,204,357</b>
<b>S&amp;E</b>	Equipment	\$1,072,215	\$89,415		\$141,260	\$15,319	\$1,318,209
	Maintenance	\$82,627	\$2,855	\$1,134	\$8,700	\$6,650	\$101,966
	Postage & Shipping	\$77,186	\$6,428	\$2,550	\$12,392	\$7,219	\$105,775
	Printing & Office Supplies	\$507,375	\$7,694	\$14,684	\$40,151	\$54,926	\$624,831
	Rental & Maintenance	\$92,956	\$12,102	\$70	\$2,376	\$33,194	\$140,697
	Scholarships & Awards	\$55,884	\$58,477	\$853,213	\$18,712	\$750	\$987,036
	Services & Fees	\$495,123	\$608,240	\$113,099	\$41,631	\$244,650	\$1,502,743
	Supplies	\$174,702	\$144,267	\$63,535	\$18,100	\$280,168	\$680,772
	Telephone & Tolls	\$419,553	\$3,046	\$2,280	\$6,505	\$20,961	\$452,345
	Travel	\$1,461,613	\$174,444	\$13,931	\$129,757	\$44,856	\$1,824,601
	Other S & E	\$156,998	\$10,727	\$40,454	\$28,506	\$10,471	\$247,155
	F&A		\$1,967,373	\$69,411			\$2,036,784
	<b>Total S&amp;E</b>		<b>\$4,596,232</b>	<b>\$3,085,068</b>	<b>\$1,174,360</b>	<b>\$448,090</b>	<b>\$719,165</b>
<b>Total</b>		<b>\$51,175,069</b>	<b>\$6,891,698</b>	<b>\$2,395,100</b>	<b>\$654,409</b>	<b>\$1,110,995</b>	<b>\$62,227,271</b>

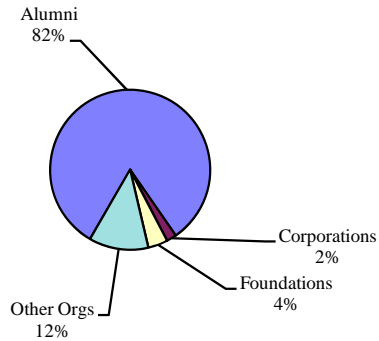
Source: DSS Transaction Summary Data/SAP All Postings Report



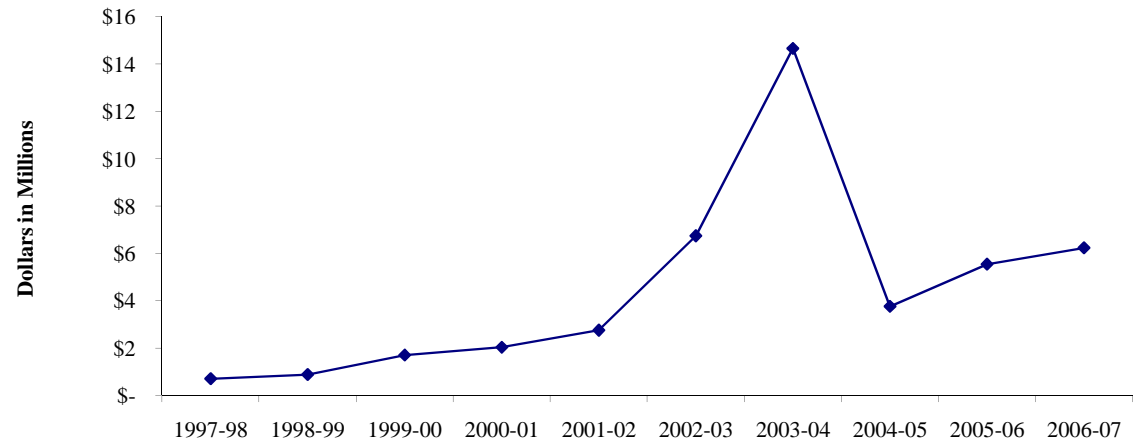
Gift Category	1997-98	1998-99	1999-00	2000-01	2001-02	2002-03	2003-04	2004-05	2005-06	2006-07
Cash/Securities	\$ 620,255	\$ 647,177	\$ 903,392	\$ 1,573,028	\$ 1,435,361	\$ 6,009,492	\$ 2,251,133	\$ 3,085,543	\$ 3,098,494	\$ 2,650,065
Real Estate	\$ -	\$ -	\$ -	\$ -	\$ -	\$ -	\$ 2,548,509	\$ -	\$ -	\$ -
Gifts-in-Kind	\$ 87,092	\$ 36,661	\$ 78,944	\$ 80,389	\$ 100,225	\$ 11,155	\$ 55,824	\$ 502,367	\$ 333,986	\$ 45,100
Irrevocable Deferred	\$0	\$ 200,000	\$ 342,909	\$ 17,545	\$ 67,924	\$ 470,798	\$ 5,000,000	\$ 53,150	\$ 52,861	\$ 3,833,240
Pledge Balances			\$ 379,705	\$ 367,904	\$ 1,272,017	\$ 451,188	\$ 4,928,675	\$ 2,248,069	\$ 3,370,645	\$ 392,861
Less: Prior Year										
Pledge Payments					\$ (119,413)	\$ (198,530)	\$ (122,707)	\$ (2,125,579)	\$ (1,311,364)	\$ (685,013)
<b>Total</b>	<b>\$ 707,347</b>	<b>\$ 883,838</b>	<b>\$ 1,704,950</b>	<b>\$ 2,038,866</b>	<b>\$ 2,756,114</b>	<b>\$ 6,744,102</b>	<b>\$ 14,661,434</b>	<b>\$ 3,763,550</b>	<b>\$ 5,544,622</b>	<b>\$ 6,236,253</b>

FY2001-02 thru Present: Campaign for Purdue counting periods; prior year pledge payments of The Campaign for Purdue were deducted from total production to accurately reflect fund-raising totals during the campaign.

**Gift Income Distribution by Source for Fiscal Year 2006-2007**  
**Total - \$6,236,253**

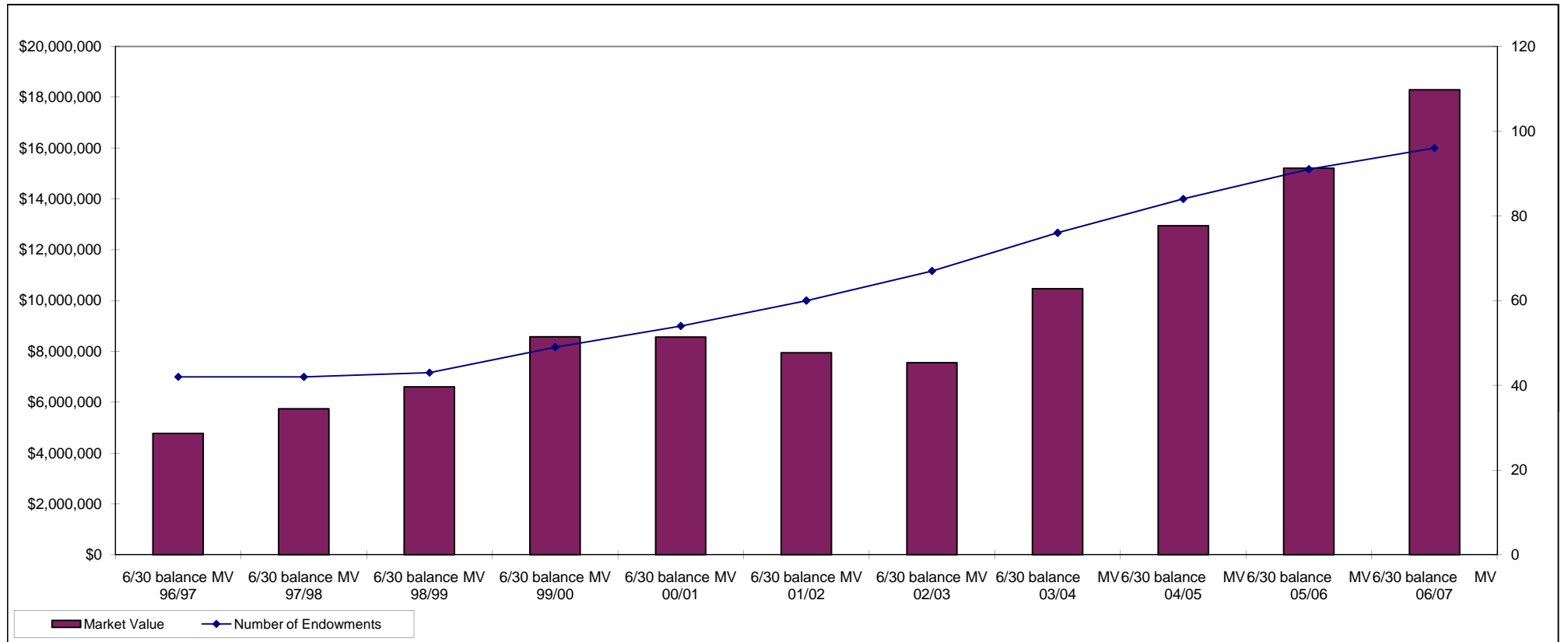


**Trend in Giving 1996-97 through 2006-07**



Source: University Development Office

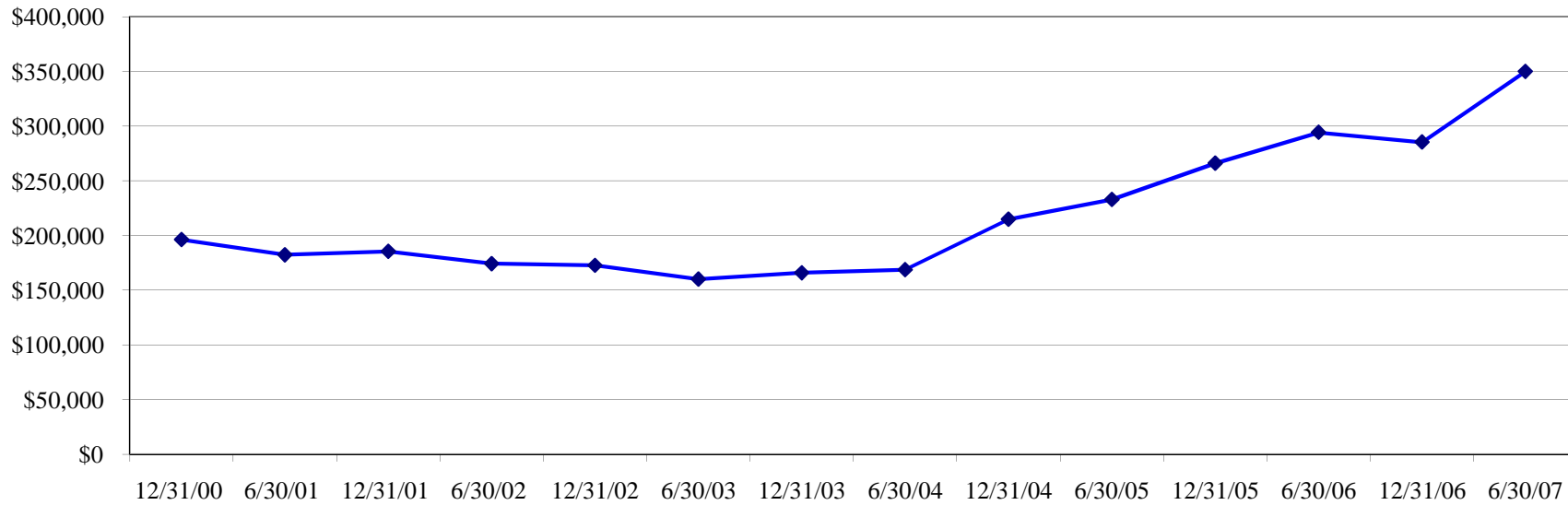
Endowments & CYP Investments	6/30 balance MV 96/97	6/30 balance MV 97/98	6/30 balance MV 98/99	6/30 balance MV 99/00	6/30 balance MV 00/01	6/30 balance MV 01/02	6/30 balance MV 02/03	6/30 balance MV 03/04	6/30 balance MV 04/05	6/30 balance MV 05/06	6/30 balance MV 06/07
Market Value	\$4,769,472	\$5,741,134	\$6,600,470	\$8,577,946	\$8,562,575	\$7,946,005	\$7,558,333	\$10,465,338	\$12,943,230	\$15,211,979	\$18,293,525
Number of Endowments	42	42	43	49	54	60	67	76	84	91	96



Source: Semi-annual Endowment Reports

	00/01		01/02		02/03		03/04		04/05		05/06		06/07	
Endowments & CYP Investments	12/31/00	6/30/01	12/31/01	6/30/02	12/31/02	6/30/03	12/31/03	6/30/04	12/31/04	6/30/05	12/31/05	6/30/06	12/31/06	6/30/07
Payments	\$196,210	\$182,271	\$185,410	\$174,163	\$172,604	\$159,994	\$165,822	\$168,595	\$214,725	\$232,885	\$266,030	\$294,200	\$285,296	\$349,909

Income Payments  
(6 month period)



Source: Semi-annual Endowment Reports



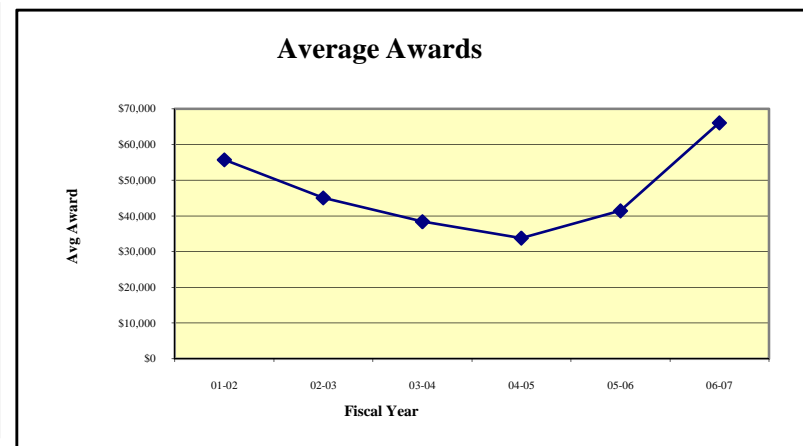
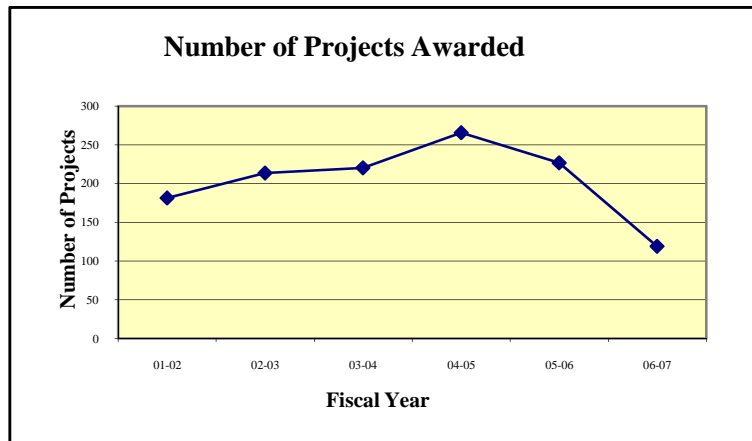
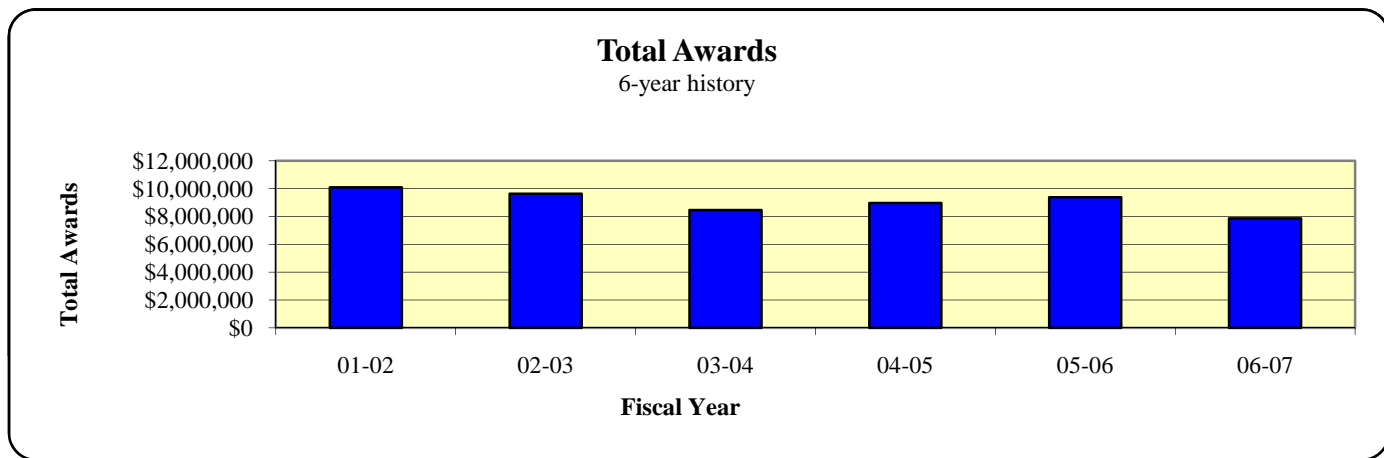
*Research*

# Total Annual Sponsored Program Awards

2007-08 Data Digest

College of Liberal Arts

	01-02	02-03	03-04	04-05	05-06	06-07
<b>Grant Projects -- 6-year history</b>						
<b>Total Awards</b>	\$10,096,812	\$9,621,313	\$8,456,283	\$8,964,772	\$9,383,616	\$7,863,859
<b>Number of Projects</b>	181	214	220	266	227	119
<b>Avg Award</b>	\$55,707	\$45,023	\$38,375	\$33,747	\$41,407	\$66,083



Source: DSS Awards Data/OnePurdue Business Warehouse

*Total Sponsored Program Awards by Sponsor*

**2007-08 Data Digest**

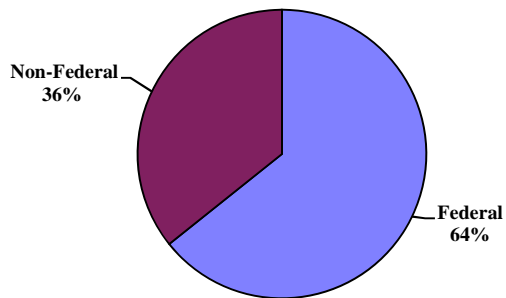
*College of Liberal Arts*

<b>Sponsor</b>	<b>1997-98</b>	<b>1998-99</b>	<b>1999-00</b>	<b>2000-01</b>	<b>2001-02</b>	<b>2002-03</b>	<b>2003-04</b>	<b>2004-05</b>	<b>2005-06</b>	<b>2006-07</b>
DHHS	\$2,428,173	\$2,127,056	\$3,100,891	\$3,499,622	\$5,559,209	\$5,504,768	\$5,617,424	\$5,158,981	\$5,093,953	\$5,222,221
NSF	\$422,241	\$214,266	\$179,923	\$610,554	\$1,169,615	\$495,700	\$505,505	\$863,043	\$954,323	\$629,849
DOEd*			\$2,000	\$3,000	\$2,000	\$246,852	\$76,940			
DOD		\$12,000	\$823,627	\$821,016	\$842,355	\$864,449	\$130,602	\$266,803	\$659,874	\$615,843
Other Federal	\$328,529	\$174,965	\$275,262	\$761,477	\$217,150	\$209,407	\$18,579	\$172,338	\$90,941	\$42,850
<b>Total Federal</b>	<b>\$3,178,943</b>	<b>\$2,528,287</b>	<b>\$4,381,703</b>	<b>\$5,695,669</b>	<b>\$7,790,329</b>	<b>\$7,321,176</b>	<b>\$6,349,050</b>	<b>\$6,461,165</b>	<b>\$6,799,091</b>	<b>\$6,510,763</b>
Industrial	\$452,069	\$1,044,840	\$254,047	\$287,895	\$1,217,718	\$589,895	\$196,752	\$693,625	\$822,464	\$437,026
ST,LCL,FGN Govt's, & Misc.**	\$1,314,948	\$994,660	\$1,581,678	\$1,425,786	\$1,088,765	\$1,710,242	\$1,910,481	\$1,809,982	\$1,762,061	
State/LCL Govt.										\$208,250
FGN Govt										\$106,250
Other PU SPS										\$601,570
Misc.										
<b>Total Non-Federal</b>	<b>\$1,767,017</b>	<b>\$2,039,500</b>	<b>\$1,835,725</b>	<b>\$1,713,681</b>	<b>\$2,306,483</b>	<b>\$2,300,137</b>	<b>\$2,107,233</b>	<b>\$2,503,607</b>	<b>\$2,584,525</b>	<b>\$1,353,096</b>
<b>Total Liberal Arts</b>	<b>\$4,945,960</b>	<b>\$4,567,787</b>	<b>\$6,217,428</b>	<b>\$7,409,350</b>	<b>\$10,096,812</b>	<b>\$9,621,313</b>	<b>\$8,456,283</b>	<b>\$8,964,772</b>	<b>\$9,383,616</b>	<b>\$7,863,859</b>

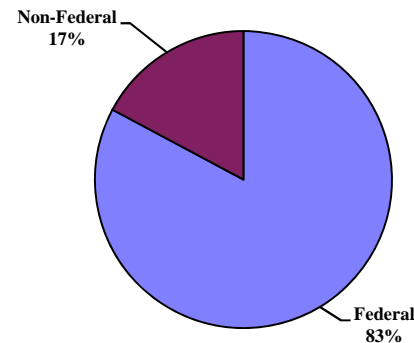
\*Beginning with 2006-07, DOEd awards included in "Other Federal" Category

\*\*ST,LCL, FGN Govt's, Other PU, Misc included in one category through 2005-06

**1997-98 Sponsored Program Awards**

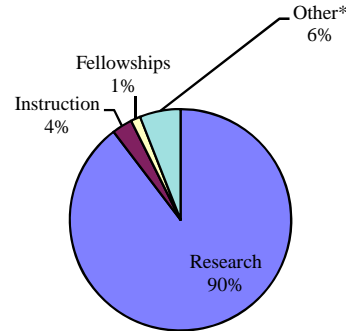


**2006-07 Sponsored Program Awards**



	1997-98	1998-99	1999-00	2000-01	2001-02	2002-03	2003-04	2004-05	2005-06	2006-07
<b>Awards by Program</b>										
Research	\$3,437,800	\$3,253,380	\$4,515,660	\$6,091,230	\$8,854,472	\$7,004,330	\$6,109,017	\$6,476,713	\$7,386,882	\$7,048,453
Instruction	\$461,258	\$212,345	\$564,130	\$163,133	\$475,018	\$245,200	\$472,580	\$361,336	\$6,450	\$235,383
Fellowships	\$774,124	\$415,091	\$948,073	\$736,570	\$520,577	\$1,257,572	\$1,071,315	\$1,115,979	\$1,030,681	\$111,784
Other*	\$272,778	\$686,971	\$189,565	\$418,417	\$246,745	\$1,114,211	\$803,371	\$1,010,744	\$959,603	\$468,238
<b>Total Awards</b>	<b>\$4,945,960</b>	<b>\$4,567,787</b>	<b>\$6,217,428</b>	<b>\$7,409,350</b>	<b>\$10,096,812</b>	<b>\$9,621,313</b>	<b>\$8,456,283</b>	<b>\$8,964,772</b>	<b>\$9,383,616</b>	<b>\$7,863,858</b>

2006-07 Sponsored Program Awards



\* Other includes: Service, Outreach, and Engagement

Source: DSS Awards Data/OnePurdue Business Warehouse

*Total Sponsored Program Awards by Department*

**2007-08 Data Digest**

*College of Liberal Arts*

<b>Department</b>	<b>1997-98</b>	<b>1998-99</b>	<b>1999-00</b>	<b>2000-01</b>	<b>2001-02</b>	<b>2002-03</b>	<b>2003-04</b>	<b>2004-05</b>	<b>2005-06</b>	<b>2006-07</b>
Administration	\$60,000	\$3,650	\$20,000	\$26,775	\$27,742	\$14,160	\$32,014	\$102,804	\$29,039	\$20,635
Afro-American Studies										\$2,500
American Studies	\$145,470	\$112,416	\$174,992	\$96,314	\$94,469	\$126,894	\$143,282	\$195,438	\$110,233	
Communication	\$98,487	\$75,001	\$102,241	\$84,762	\$52,902	\$164,186	\$121,329	\$120,522	\$348,586	\$435,716
Comparative Literature	\$16,904	\$20,250	\$31,688	\$32,827	\$23,257	\$46,137	\$52,156	\$51,372	\$59,613	
English	\$296,036	\$117,280	\$220,470	\$266,567	\$194,110	\$245,768	\$452,917	\$356,236	\$445,999	\$346,125
Foreign Languages and Literatures	\$155,276	\$176,683	\$122,117	\$71,412	\$200,665	\$100,043	\$161,701	\$272,671	\$114,479	\$168,219
Health and Kinesiology	\$175,378	\$156,760	\$204,851	\$273,277	\$315,318	\$576,870	\$534,603	\$737,483	\$563,826	\$235,360
History	\$122,445	\$56,150	\$238,796	\$147,343	\$153,593	\$188,946	\$225,808	\$118,581	\$140,983	\$61,969
Linguistics						\$80,865	\$104,457	\$89,305	\$96,331	
Philosophy	\$143,184	\$84,330	\$115,627	\$103,362	\$110,014	\$122,317	\$164,050	\$108,938	\$160,215	\$92,420
Political Science	\$137,327	\$120,575	\$266,295	\$204,605	\$93,674	\$295,011	\$109,089	\$128,280	\$242,019	\$44,800
Psychological Sciences	\$1,913,093	\$1,983,669	\$2,380,410	\$3,763,095	\$4,271,516	\$4,377,312	\$3,085,418	\$3,697,586	\$3,562,489	\$3,233,795
Sociology and Anthropology	\$463,532	\$580,615	\$522,159	\$286,226	\$768,188	\$586,974	\$498,485	\$681,427	\$459,512	\$145,634
Speech, Language, and Hearing Sciences	\$1,212,335	\$1,045,117	\$1,782,565	\$1,964,222	\$3,747,931	\$2,686,619	\$2,749,162	\$2,294,783	\$3,037,992	\$3,073,877
Visual and Performing Arts	\$6,493	\$35,291	\$19,467	\$73,355	\$17,159	\$9,211	\$21,812	\$9,346	\$12,300	\$2,809
Women's Studies			\$15,750	\$15,208	\$26,274					
<b>Total</b>	<b>\$4,945,960</b>	<b>\$4,567,787</b>	<b>\$6,217,428</b>	<b>\$7,409,350</b>	<b>\$10,096,812</b>	<b>\$9,621,313</b>	<b>\$8,456,283</b>	<b>\$8,964,772</b>	<b>\$9,383,616</b>	<b>\$7,863,859</b>

<b>Department</b>	<b>1997-98</b>	<b>1998-99</b>	<b>1999-00</b>	<b>2000-01</b>	<b>2001-02</b>	<b>2002-03</b>	<b>2003-04</b>	<b>2004-05</b>	<b>2005-06</b>	<b>2006-07</b>
Administration	1.00	3.00	1.00	0.20	0.16	0.05	6.00	5.10	3.00	2.00
Afro-American Studies										1.00
American Studies	14.00	10.00	18.00	15.00	9.00	10.20	12.25	22.00	9.00	
Communication	10.00	6.14	9.34	9.20	6.20	11.00	11.00	14.00	16.00	11.00
Comparative Literature	3.00	2.00	4.00	5.00	2.00	4.00	6.00	5.00	6.00	
English	30.00	8.00	21.00	24.00	15.40	12.50	19.75	28.00	21.00	10.00
Foreign Languages and Literatures	6.70	7.83	12.40	9.33	5.40	7.00	9.20	13.40	10.66	5.50
Health and Kinesiology	10.50	14.02	21.15	17.25	15.75	25.25	23.67	15.70	27.10	15.30
History	11.75	6.00	15.00	16.00	11.00	11.00	15.00	12.00	9.00	4.00
Linguistics						6.00	7.00	11.00	7.00	
Philosophy	12.00	7.50	11.00	12.00	9.25	12.00	14.00	14.00	12.00	7.00
Political Science	10.00	12.20	19.38	16.00	8.00	8.00	4.49	9.10	12.50	4.33
Psychological Sciences	43.05	43.58	52.66	43.84	50.25	52.43	41.95	53.55	45.56	30.13
Sociology and Anthropology	20.00	14.00	26.75	23.82	19.44	23.87	17.22	27.00	12.00	7.10
Speech, Language, and Hearing Sciences	16.50	16.50	24.30	30.10	24.40	27.40	28.83	31.80	33.80	20.95
Visual and Performing Arts	3.00	6.00	3.00	4.00	3.00	3.00	4.00	4.00	2.00	1.00
Women's Studies			3.00	1.00	2.00					
<b>Total</b>	<b>191.50</b>	<b>156.77</b>	<b>241.98</b>	<b>226.74</b>	<b>181.25</b>	<b>213.70</b>	<b>220.36</b>	<b>265.65</b>	<b>226.62</b>	<b>119.31</b>

\* Fractional number of projects depicts a split of projects among departments.

Source: DSS Awards Data/OnePurdue Business Warehouse



*Total Sponsored Program Proposals by Sponsor*

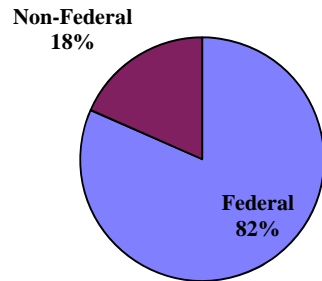
**2007-08 Data Digest**

*College of Liberal Arts*

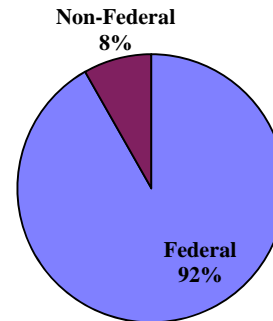
Sponsor	1997-98	1998-99	1999-00	2000-01	2001-02	2002-03	2003-04	2004-05	2005-06	2006-07
DHHS	\$3,953,244	\$5,081,106	\$10,110,307	\$6,645,241	\$8,089,183	\$25,227,743	\$21,618,678	\$27,100,773	\$36,837,088	\$50,208,858
NSF	\$2,650,174	\$2,346,026	\$4,856,082	\$3,997,313	\$3,316,697	\$6,660,609	\$3,954,935	\$5,641,435	\$7,894,765	\$6,040,050
DOEd	\$548,836		\$437,313	\$566,461	\$681,026	\$1,444,675		\$2,552,028	\$1,355,076	
DOD	\$148,653	\$12,000	\$3,772,519	\$79,985			\$1,254,101	\$985,822	\$209,641	\$1,628,089
Other Federal	\$374,656	\$415,163	\$1,034,582	\$629,704	\$180,678	\$13,217,273	\$2,119,685	\$2,724,116	\$1,112,145	\$1,869,694
<b>Total Federal</b>	<b>\$7,675,563</b>	<b>\$7,854,295</b>	<b>\$20,210,803</b>	<b>\$11,918,704</b>	<b>\$12,267,584</b>	<b>\$46,550,300</b>	<b>\$28,947,399</b>	<b>\$39,004,174</b>	<b>\$47,408,715</b>	<b>\$59,746,691</b>
Foundation/Industrial	\$1,632,042	\$8,938,642	\$317,605	\$1,116,176	\$1,490,122	\$1,169,786	\$3,759,999	\$1,918,748	\$1,491,922	\$1,621,014
ST,LCL,FGN Govt's, & Misc.*	\$97,402	\$111,675	\$157,241	\$83,500	\$209,933	\$309,844	\$1,987,526	\$178,982	\$259,878	
State/Local Gov't										\$670,495
FGN Gov't										\$2,591,389
Misc.										\$476,694
<b>Total Non-Federal</b>	<b>\$1,729,444</b>	<b>\$9,050,317</b>	<b>\$474,846</b>	<b>\$1,199,676</b>	<b>\$1,700,055</b>	<b>\$1,479,630</b>	<b>\$5,747,525</b>	<b>\$2,097,730</b>	<b>\$1,751,800</b>	<b>\$5,359,592</b>
<b>Total Liberal Arts</b>	<b>\$9,405,007</b>	<b>\$16,904,612</b>	<b>\$20,685,649</b>	<b>\$13,118,380</b>	<b>\$13,967,639</b>	<b>\$48,029,930</b>	<b>\$34,694,924</b>	<b>\$41,101,904</b>	<b>\$49,160,515</b>	<b>\$65,106,283</b>

\*ST,LCL, FGN Govt's, Other PU, Misc included in one category through 2005-06

**1997-98 Sponsored Program Proposals**



**2006-07 Sponsored Program Proposals**



Source: DSS Proposal Data/OnePurdue Business Warehouse

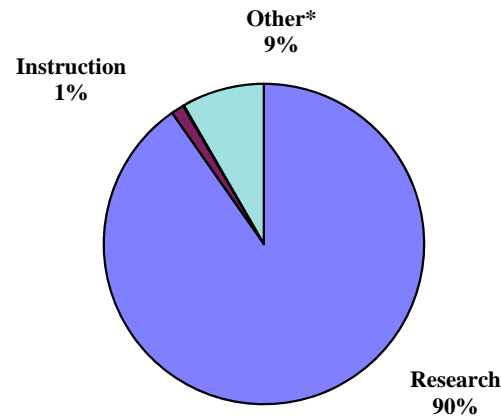
*Total Sponsored Program Proposals by Activity Type*

**2007-08 Data Digest**

*College of Liberal Arts*

	1997-98	1998-99	1999-00	2000-01	2001-02	2002-03	2003-04	2004-05	2005-06	2006-07
<b>Proposals by Program</b>										
Research	\$8,102,879	\$15,507,350	\$17,348,023	\$11,769,999	\$12,790,309	\$31,718,651	\$28,118,643	\$35,814,518	\$44,069,695	\$58,775,549
Instruction	\$733,259	\$397,346	\$2,427,051	\$272,836	\$729,530	\$409,839	\$1,580,412	\$2,581,315	\$3,308,839	\$852,008
Fellowships	\$70,754	\$67,528	\$233,047	\$553,782	\$40,753	\$9,130	\$248,701	\$63,025	\$237,225	\$52,361
Other*	\$498,115	\$932,388	\$677,528	\$521,763	\$407,047	\$15,892,310	\$4,747,168	\$2,643,046	\$1,544,756	\$5,426,363
<b>Total Proposals</b>	<b>\$9,405,007</b>	<b>\$16,904,612</b>	<b>\$20,685,649</b>	<b>\$13,118,380</b>	<b>\$13,967,639</b>	<b>\$48,029,930</b>	<b>\$34,694,924</b>	<b>\$41,101,904</b>	<b>\$49,160,515</b>	<b>\$65,106,281</b>

**2006-07 Sponsored Program Proposals**



\* Other includes: Service, Outreach, and Engagement

Source: DSS Proposal Data/OnePurdue Business Warehouse

*Total Sponsored Program Proposals by Department*

**2007-08 Data Digest**

*College of Liberal Arts*

<b>Department</b>	<b>1997-98</b>	<b>1998-99</b>	<b>1999-00</b>	<b>2000-01</b>	<b>2001-02</b>	<b>2002-03</b>	<b>2003-04</b>	<b>2004-05</b>	<b>2005-06</b>	<b>2006-07</b>
Administration				\$140,850	\$32,984	\$280,661	\$347,902	\$42,457	\$39,626	\$51,386
American Studies					\$4,662	\$750				
Communication	\$100,825	\$167,342	\$207,797	\$697,114	\$52,856	\$1,263,558	\$732,949	\$1,333,706	\$5,646,577	\$3,259,585
English	\$29,263	\$263,983	\$428,741	\$640,958	\$266,922	\$468,568	\$1,107,015	\$812,881	\$0	\$889,291
Foreign Languages and Literatures	\$518,971	\$81,038	\$349,763	\$26,537	\$342,411	\$25,974	\$1,000	\$1,064,373	\$156,298	\$651,207
Health and Kinesiology	\$600,280	\$511,111	\$159,875	\$388,087	\$631,189	\$752,478	\$756,941	\$1,684,410	\$4,252,799	\$2,458,905
History	\$16,402	\$6,894,716	\$418,738	\$86,520	\$141,471	\$165,191	\$110,199	\$63,425	\$336,500	\$234,696
Philosophy		\$45,750	\$2,000	\$2,800		\$12,907,179	\$3,581,310	\$756,778	\$225,003	\$2,431,360
Political Science	\$452,370	\$102,377	\$313,122	\$45,065	\$304,155	\$270,890	\$211,396	\$2,131,345	\$1,468,121	\$299,482
Psychological Sciences	\$3,460,214	\$4,803,590	\$11,699,603	\$6,573,643	\$4,560,071	\$19,071,191	\$16,165,907	\$15,516,146	\$20,168,100	\$30,624,714
Sociology and Anthropology	\$1,367,805	\$2,096,031	\$305,707	\$747,772	\$1,367,519	\$2,089,398	\$1,562,553	\$4,455,548	\$1,101,087	\$7,262,154
Speech, Language, and Hearing Sciences	\$2,840,736	\$1,931,674	\$6,662,862	\$3,645,226	\$6,192,222	\$10,690,408	\$9,931,614	\$13,136,008	\$15,726,099	\$16,721,780
Student Services and Counseling			\$17,286							
Visual and Performing Arts	\$18,141	\$7,000	\$97,655	\$123,107	\$71,177	\$43,687	\$25,000	\$30,500	\$40,305	\$65,000
Women's Studies			\$22,500	\$701			\$161,138	\$74,327		\$156,720
<b>Total</b>	<b>\$9,405,007</b>	<b>\$16,904,612</b>	<b>\$20,685,649</b>	<b>\$13,118,380</b>	<b>\$13,967,639</b>	<b>\$48,029,933</b>	<b>\$34,694,924</b>	<b>\$41,101,904</b>	<b>\$49,160,515</b>	<b>\$65,106,280</b>

<b>Department</b>	<b>1997-98</b>	<b>1998-99</b>	<b>1999-00</b>	<b>2000-01</b>	<b>2001-02</b>	<b>2002-03</b>	<b>2003-04</b>	<b>2004-05</b>	<b>2005-06</b>	<b>2006-07</b>
Administration				0.60	1.16	1.55	2.10	4.00	4.00	3.00
American Studies					0.20	0.25				
Communication	4.30	2.49	4.20	1.77	4.20	2.76	4.45	8.00	24.65	11.96
English	4.00	3.50	3.00	7.20	9.73	4.25	6.10	2.75		4.30
Foreign Languages and Literatures	2.61	1.50	1.79	1.50	0.20	1.00	1.00	2.21	2.00	2.02
Health and Kinesiology	11.70	14.59	8.15	7.00	15.90	20.62	11.85	14.38	20.98	21.15
History	2.75	5.00	4.00	3.00	4.00	2.00	3.00	1.30	2.60	0.56
Philosophy		2.25	1.00	1.00		1.00	4.00	3.75	0.50	1.00
Political Science	4.96	5.20	4.38	2.00	5.00	3.00	5.05	5.03	7.20	1.58
Psychological Sciences	30.98	34.11	36.06	33.02	32.75	36.33	35.68	35.48	37.72	66.72
Sociology and Anthropology	10.35	14.30	8.80	14.94	19.34	11.47	12.62	16.75	14.78	24.16
Speech, Language, and Hearing Sciences	18.30	12.45	19.05	15.85	17.40	17.03	22.54	17.90	26.50	46.09
Student Services and Counseling			0.50							
Visual and Performing Arts	5.00	1.00	4.00	3.00	5.00	3.00	2.00	4.00	1.70	3.00
Women's Studies			1.00	1.00			0.62	0.50		1.65
<b>Total</b>	<b>94.95</b>	<b>96.39</b>	<b>95.93</b>	<b>91.88</b>	<b>114.88</b>	<b>104.26</b>	<b>111.01</b>	<b>116.05</b>	<b>142.63</b>	<b>187.19</b>

\* Fractional number of projects depicts a split of projects among departments.

Source: DSS Proposal Data/OnePurdue Business Warehouse



*For questions concerning material in digest contact:*

College of Liberal Arts  
100 N. University Street  
West Lafayette, IN 47907-2098  
765-494-3663

*Publication Date: September 2009*