

PURDUE  
UNIVERSITY

COLLEGE OF LIBERAL ARTS 

*Voices ♦ Communities ♦ Cultures*

*Data Digest*  
*2006-07*

Facts about:

Students

Instruction

Faculty & Staff

Finances

Research

<b>Students</b>		<b>Faculty &amp; Staff</b>	
Historical Enrollment by Student Level	4	Faculty & Staff Headcount	27
Undergraduate Enrollment	5	Tenured & Tenure Track Faculty Headcount by Gender	28
Undergraduate Enrollment by Department	6	Tenured & Tenure Track Faculty Headcount by Department	29
Graduate Enrollment by Department	7	Tenured & Tenure Track Faculty Headcount by Race/Ethnicity	30
Enrollment by Gender	8	Tenured & Tenure Track Faculty Headcount by Gender & Rank	31
Undergraduate Enrollment by Race/Ethnicity	9	Tenured & Tenure Track Faculty Headcount by Race & Rank	32
Undergraduate Enrollment by International Students	10	Faculty & Staff Headcount by Gender	33
Undergraduate Enrollment by Major/Minor	11	Faculty & Staff Headcount by Classification and Race/Ethnicity	34
Undergraduate Enrollment by Major/Minor (Continued)	12	Tenure Track and Clinical Faculty Searches	35
Degrees Conferred by Degree Level	13	Promotions by Rank, Gender & Race/Ethnicity	36
Baccalaureate Degrees Conferred by Department	14	<b>Finances</b>	
Average SAT Scores	15	Total Annual Expenditures	38
Retention and Graduation Rates	16	Total Annual Expenditures by Category	39
		Total General Fund Expenditures	40
		Total Gift Fund Expenditures	41
		Total Sponsored Program Expenditures	42
		Expenditures by Type, Year & Source	43
		Development Annual Giving	44
		Endowment Market Value	45
		Endowment Income Summary	46
<b>Instruction</b>		<b>Research</b>	
Student Credit Hours by Department - All Semesters	18	Total Annual Sponsored Program Awards	48
Average Class Size by Department	19	Total Extramural Awards by Sponsor	49
Weekly Teacher Class Hours per 010 Fund 3F-6F Faculty FTE	20	Total Extramural Awards by Program	50
Weekly Student Class Hours - All Semesters	21	Total Extramural Awards by Department	51
Weekly Student Class Hours - Fall Semesters	22	Total Extramural Proposals by Sponsor	52
Weekly Student Class Hours by Type of Instr. and Rank of Instructor	23	Total Extramural Proposals by Program	53
Weekly Student Class Hours by Department	24	Total Extramural Proposals by Department	54
Weekly Student Class Hours - Summary University	25		



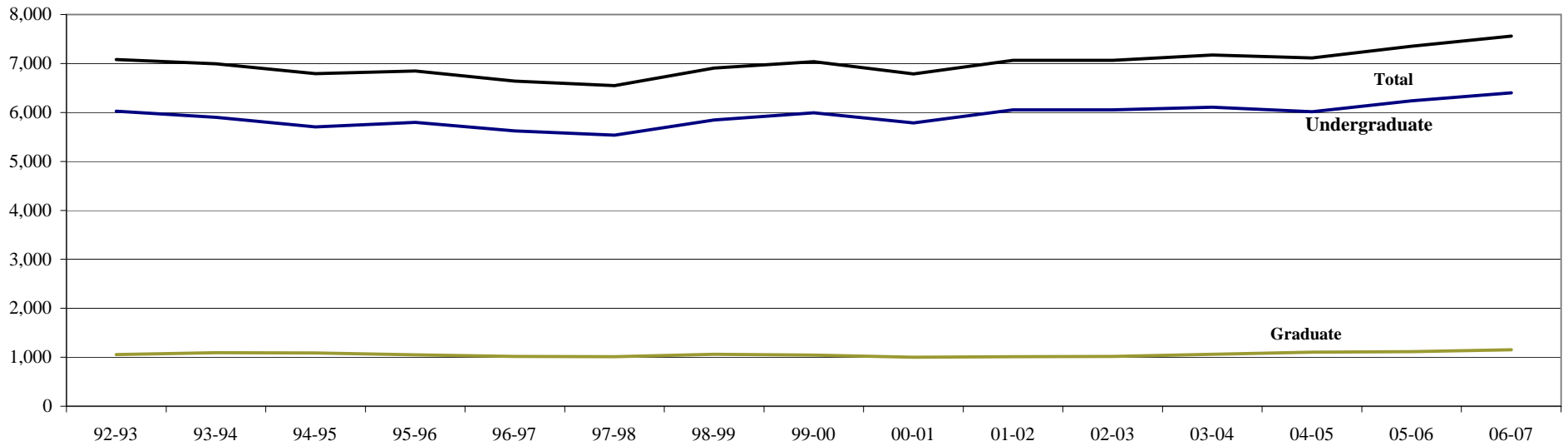
*Students*

*Historical Fall Semester Enrollment by Student Level*

**Data Digest 2006-07**

*College of Liberal Arts*

Classification	92-93	93-94	94-95	95-96	96-97	97-98	98-99	99-00	00-01	01-02	02-03	03-04	04-05	05-06	06-07
<b>Undergraduate</b>	6,026	5,902	5,704	5,795	5,623	5,536	5,846	5,993	5,787	6,054	6,052	6,109	6,014	6,239	6,403
<b>Graduate</b>	1,057	1,093	1,088	1,050	1,019	1,014	1,062	1,045	1,001	1,010	1,015	1,062	1,102	1,113	1,154
<b>Total Liberal Arts</b>	<b>7,083</b>	<b>6,995</b>	<b>6,792</b>	<b>6,845</b>	<b>6,642</b>	<b>6,550</b>	<b>6,908</b>	<b>7,038</b>	<b>6,788</b>	<b>7,064</b>	<b>7,067</b>	<b>7,171</b>	<b>7,116</b>	<b>7,352</b>	<b>7,557</b>
<b>University Enrollment</b>	35,833	35,161	34,484	34,685	35,156	35,715	36,878	37,762	37,871	38,208	38,564	38,847	38,653	38,712	39,228
<b>% of University Total</b>	<b>20%</b>	<b>20%</b>	<b>20%</b>	<b>20%</b>	<b>19%</b>	<b>18%</b>	<b>19%</b>	<b>19%</b>	<b>18%</b>	<b>18%</b>	<b>18%</b>	<b>18%</b>	<b>18%</b>	<b>19%</b>	<b>19%</b>



Education became its own School after 1989. These data include the Department of Education enrollments through 1992-93. Economics was a shared program with the School of Management. The figures above include 50% of all Economics majors thru 2000-01.

Source: Office of the Registrar - Enrollment Report

Residence				
	Liberal Arts		University	
	Number	% of Total	Number	% of Total
Indiana Resident	4,651	73%	20,860	67%
Out-of-State	1,520	25%	8,001	26%
U.S. Territory	78	1%	569	2%
International	154	2%	1,860	6%
	<b>6,403</b>		<b>31,290</b>	

Classification				
	Liberal Arts		University	
	Number	% of Total	Number	% of Total
First Year (1s & 2s)	1,504	23%	8,470	27%
Sophomore (3s & 4s)	1,727	27%	8,121	26%
Junior (5s & 6s)	1,577	25%	6,901	22%
Senior (7s & 8s)	1,594	25%	7,546	24%
Nondegree	1	0%	252	1%
Total Undergraduate	<b>6,403</b>		<b>31,290</b>	
Total Graduate/Prof.	<b>1,154</b>	<b>15%</b>	<b>7,938</b>	<b>20%</b>
	<b>7,557</b>		<b>39,228</b>	

Gender				
	Liberal Arts		University	
	Number	% of Total	Number	% of Total
Male	2,626	41%	18,405	59%
Female	3,777	59%	12,885	41%
	<b>6,403</b>		<b>31,290</b>	

Full / Part-time Status				
	Liberal Arts		University	
	Number	% of Total	Number	% of Total
Full-Time	6,176	96%	29,696	95%
Part-Time	227	4%	1,594	5%
	<b>6,403</b>		<b>31,290</b>	

Figures include 100% of all Economics majors.

Source: Office of the Registrar - Enrollment Report

Ethnicity					
Department	African	Asian	Hispanic	Native	Total
	American	American	American	American	
Communication	58	16	30	4	108
English	17	13	12	2	44
Foreign Languages and Literatures	8	5	21	1	35
Health and Kinesiology	47	11	18	8	84
History	2	4	12	2	20
Philosophy	1	0	2	2	5
Political Science	27	23	18	5	73
Psychological Sciences	66	39	47	7	159
Sociology and Anthropology	45	13	20	0	78
Speech, Language, and Hearing Sciences	7	5	7	1	20
Visual and Performing Arts	30	37	22	4	93
General, CODO	55	74	43	4	176
<b>All Liberal Arts</b>	<b>363</b>	<b>240</b>	<b>252</b>	<b>40</b>	<b>895</b>
<b>All Purdue</b>	<b>1,104</b>	<b>1,724</b>	<b>861</b>	<b>156</b>	<b>3,845</b>
<b>Liberal Arts %</b>	<b>33%</b>	<b>14%</b>	<b>29%</b>	<b>26%</b>	<b>23%</b>

Ethnicity				
	Liberal Arts		University	
	Number	% of Total	Number	% of Total
African American	363	6%	1,104	4%
Asian American	240	4%	1,724	6%
Hispanic American	252	4%	861	3%
Native American	40	1%	156	0%
Caucasian	5,203	81%	24,880	80%
Other	103	2%	432	1%
Unreported	48	1%	273	1%
International	154	2%	1,860	6%
<b>Total</b>	<b>6,403</b>		<b>31,290</b>	

*Fall Semester Undergraduate Enrollment by Department*

**Data Digest 2006-07**

*College of Liberal Arts*

<b>UNDERGRADUATES</b>	<b>92-93</b>	<b>93-94</b>	<b>94-95</b>	<b>95-96</b>	<b>96-97</b>	<b>97-98</b>	<b>98-99</b>	<b>99-00</b>	<b>00-01</b>	<b>01-02</b>	<b>02-03</b>	<b>03-04</b>	<b>04-05</b>	<b>05-06</b>	<b>06-07</b>
Communication	1,274	1,115	998	988	983	955	1,033	1,210	1,248	1,285	1,055	897	770	758	788
English	405	376	331	366	394	391	431	440	460	476	515	510	489	477	484
Foreign Languages and Literatures	144	122	109	101	95	89	85	99	90	108	126	143	147	165	178
Health and Kinesiology	394	380	393	443	394	630	625	589	508	477	512	530	567	572	629
History	202	203	183	205	185	181	160	169	165	178	234	274	291	285	274
Interdisciplinary Studies	42	50	49	38	28	27	37	43	58	63	70	79	98	128	148
Philosophy	34	35	26	15	18	28	24	20	17	25	30	42	40	44	47
Political Science	340	305	261	235	222	243	233	248	264	323	325	388	361	413	458
Psychological Sciences	763	752	725	689	680	657	698	717	729	767	852	882	886	898	920
Sociology and Anthropology	467	472	444	445	425	392	405	377	372	383	454	461	449	458	452
Speech, Language, and Hearing Sciences	183	200	204	210	212	202	219	198	178	176	161	180	187	227	258
Visual and Performing Arts	586	597	566	538	530	602	628	691	707	796	823	829	835	802	792
Undecided/CODO	855	975	1,110	1,197	1,115	1,005	1,138	1,053	991	997	895	894	894	1,012	975
<b>Total Liberal Arts</b>	<b>5,689</b>	<b>5,582</b>	<b>5,399</b>	<b>5,470</b>	<b>5,281</b>	<b>5,402</b>	<b>5,716</b>	<b>5,854</b>	<b>5,787</b>	<b>6,054</b>	<b>6,052</b>	<b>6,109</b>	<b>6,014</b>	<b>6,239</b>	<b>6,403</b>

Education became its own College after 1989. These data include the Department of Education enrollments through 1992-93.

*Source: Office of the Registrar - Enrollment Report*

*Fall Semester Graduate Enrollment by Department***Data Digest 2006-07***College of Liberal Arts*

<b>Graduate Students</b>	<b>92-93</b>	<b>93-94</b>	<b>94-95</b>	<b>95-96</b>	<b>96-97</b>	<b>97-98</b>	<b>98-99</b>	<b>99-00</b>	<b>00-01</b>	<b>01-02</b>	<b>02-03</b>	<b>03-04</b>	<b>04-05</b>	<b>05-06</b>	<b>06-07</b>
American Studies	36	36	42	41	42	41	42	35	37	37	45	48	46	44	44
Communication	93	95	107	93	93	95	96	94	98	98	96	100	100	111	110
Comparative Literature	21	19	27	24	27	31	34	34	36	29	26	32	33	31	30
English	229	250	248	240	236	231	238	261	238	214	225	236	231	218	224
Foreign Languages and Literatures	72	73	80	83	85	64	61	64	69	69	59	60	83	83	82
Health and Kinesiology	75	91	76	71	63	69	79	69	74	76	69	72	76	79	92
History	70	58	65	63	58	52	60	55	44	53	61	67	81	80	81
Linguistics					4	6	7	9	17	19	23	24	23	26	27
Philosophy	46	48	44	52	47	39	42	38	38	43	44	53	58	70	65
Political Science	67	68	54	62	73	71	63	68	60	59	57	57	55	61	67
Psychological Sciences	128	126	123	130	118	121	120	105	98	96	97	105	108	106	102
Sociology and Anthropology	68	82	89	77	68	74	66	67	66	72	67	69	79	81	89
Speech, Language, and Hearing Sciences	92	88	87	69	60	85	97	94	81	85	76	80	71	68	89
Visual and Performing Arts	60	59	46	45	45	35	57	52	45	60	70	59	58	55	52
<b>Total Liberal Arts</b>	<b>1,057</b>	<b>1,093</b>	<b>1,088</b>	<b>1,050</b>	<b>1,019</b>	<b>1,014</b>	<b>1,062</b>	<b>1,045</b>	<b>1,001</b>	<b>1,010</b>	<b>1,015</b>	<b>1,062</b>	<b>1,102</b>	<b>1,113</b>	<b>1,154</b>

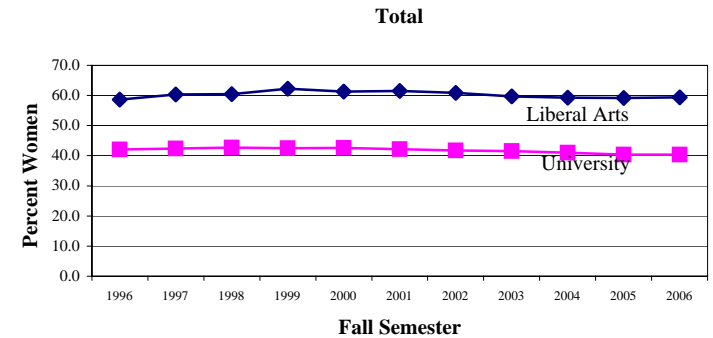
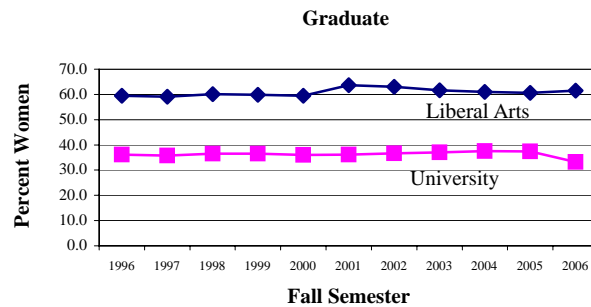
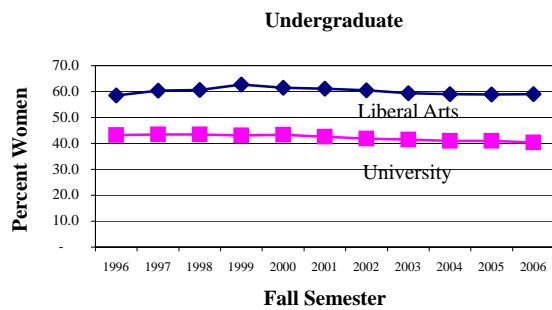
*Source: Office of the Registrar - Enrollment Report*

# Fall Semester Enrollment by Gender

Data Digest 2006-07

College of Liberal Arts

Student Level	1996	1997	1998	1999	2000	2001	2002	2003	2004	2005	2006
<b>Undergraduates</b>											
Men	2,333	2,168	2,278	2,210	2,282	2,400	2,450	2,544	2,542	2,567	2,626
Women	3,290	3,302	3,505	3,715	3,637	3,778	3,747	3,722	3,651	3,672	3,777
Percent Women (Liberal Arts)	58.5	60.4	60.6	62.7	61.4	61.2	60.5	59.4	59.0	58.9	59.0
Percent Women (University)	43.2	43.4	43.4	43.1	43.3	42.6	41.8	41.5	41.0	41.0	40.3
<b>Graduate Students</b>											
Men	417	405	427	424	398	367	375	407	430	438	444
Women	602	609	635	621	603	643	640	655	672	675	710
Percent Women (Liberal Arts)	59.5	59.1	60.1	59.8	59.4	63.7	63.1	61.7	61.0	60.6	61.5
Percent Women (University)	36.1	35.7	36.5	36.5	36.0	36.1	36.7	37.0	37.5	37.4	33.3
<b>Total</b>											
Men	2,750	2,573	2,705	2,634	2,680	2,767	2,825	2,951	2,972	3,005	3,070
Women	3,892	3,911	4,140	4,336	4,240	4,421	4,387	4,377	4,323	4,347	4,487
Percent Women (Liberal Arts)	58.6	60.3	60.5	62.2	61.3	61.5	60.8	59.7	59.3	59.1	59.4
Percent Women (University)	42.1	42.4	42.7	42.5	42.6	42.2	41.7	41.5	41.0	40.4	40.4

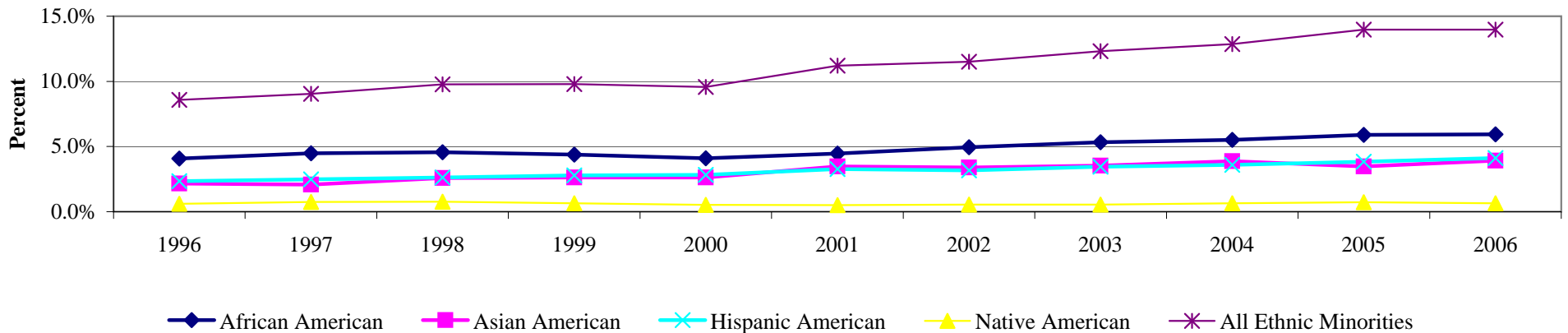


Source: Office of the Registrar - Enrollment Report



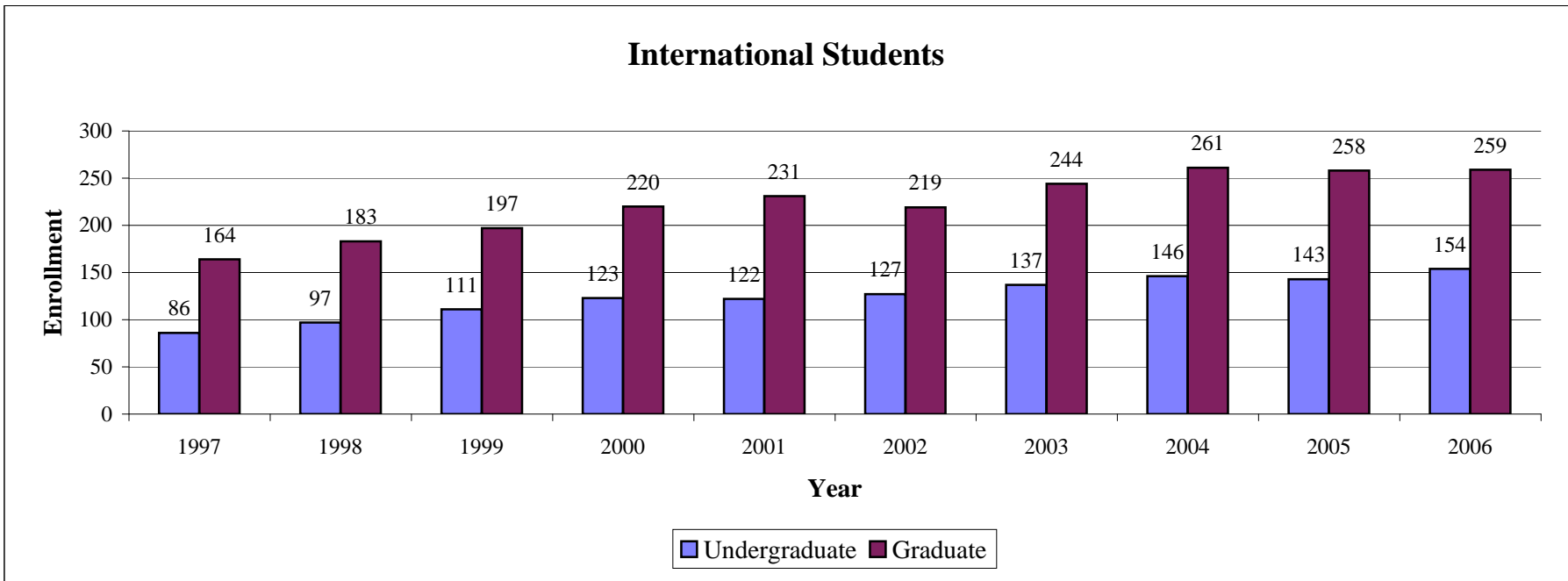
Student Level	1996	1997	1998	1999	2000	2001	2002	2003	2004	2005	2006
<b>Undergraduates</b>											
African American	236	252	250	253	243	261	303	327	338	361	363
Asian American	125	117	141	152	156	203	207	216	237	213	240
Hispanic American	136	140	144	161	168	192	194	211	220	235	252
Native American	35	42	42	37	31	29	33	33	39	44	40
<b>All Ethnic Minorities</b>	<b>497</b>	<b>509</b>	<b>535</b>	<b>566</b>	<b>567</b>	<b>656</b>	<b>704</b>	<b>754</b>	<b>795</b>	<b>853</b>	<b>895</b>
<b>CLA Undergrad Enrollment</b>	<b>5,795</b>	<b>5,623</b>	<b>5,470</b>	<b>5,783</b>	<b>5,925</b>	<b>5,853</b>	<b>6,116</b>	<b>6,124</b>	<b>6,185</b>	<b>6,103</b>	<b>6,403</b>
<b>Undergraduate Percentages</b>											
African American	4.1%	4.5%	4.6%	4.4%	4.1%	4.5%	5.0%	5.3%	5.5%	5.9%	5.9%
Asian American	2.2%	2.1%	2.6%	2.6%	2.6%	3.5%	3.4%	3.5%	3.9%	3.5%	3.9%
Hispanic American	2.3%	2.5%	2.6%	2.8%	2.8%	3.3%	3.2%	3.4%	3.6%	3.8%	4.1%
Native American	0.6%	0.7%	0.8%	0.6%	0.5%	0.5%	0.5%	0.5%	0.6%	0.7%	0.7%
<b>All Ethnic Minorities</b>	<b>8.6%</b>	<b>9.1%</b>	<b>9.8%</b>	<b>9.8%</b>	<b>9.6%</b>	<b>11.2%</b>	<b>11.5%</b>	<b>12.3%</b>	<b>12.9%</b>	<b>14.0%</b>	<b>14.0%</b>

Undergraduate Enrollment by Race/Ethnicity



Source: Office of the Registrar - Enrollment Report

	1997	1998	1999	2000	2001	2002	2003	2004	2005	2006
<b>Undergraduate</b>	86	97	111	123	122	127	137	146	143	154
<b>Graduate</b>	164	183	197	220	231	219	244	261	258	259



Source: Office of the Registrar - Enrollment Report

# Undergraduate Enrollment by Major/Minor - Fall 2006

Data Digest 2006-07

College of Liberal Arts

Major/Minor Area by Department	Major Enrollment	Minor Enrollment	Total Enrollment
<b>Visual and Performing Arts</b>			
Art & Design	-	77	77
Art History	17	49	66
Dance	-	25	25
Fine Arts Concentration	68	-	68
Industrial Design Prof Program	116	-	116
Interior Design	170	-	170
Music History and Theory	-	11	11
Photo & Related Media	70	2	72
Pre Art & Design	6	-	6
Theatre	75	34	109
Theatre Major	-	-	-
Visual Arts Teaching	91	-	91
Visual Communications Design	178	-	178
Department Total	791	198	989

<b>Speech, Language, and Hearing Sciences</b>			
Speech, Language, and Hearing Sciences	258	-	258
Department Total	258	-	258

<b>English</b>			
Creative Writing	80	18	98
English	168	69	237
English Teaching	157	-	157
Professional Writing	79	-	79
Department Total	484	87	571

<b>Interdisciplinary Studies</b>			
African-American Studies	10	16	26
Asian Studies	9	6	15
Classical Studies	7	6	13
Comparative Literature	2	-	2
Interdisciplinary Film/Video	70	23	93
Italian Studies	2	-	2
Jewish Studies	-	4	4
Linguistics	17	17	34
Medieval Studies	7	7	14
Peace Studies	-	5	5
Religious Studies	16	24	40
Women's Studies	8	24	32
Department Total	148	132	280

Major/Minor Area by Department	Major Enrollment	Minor Enrollment	Total Enrollment
<b>History</b>			
History	274	78	352
History of Law and Public Policy	-	-	-
History of Modernity	-	4	4
History of Popular Culture	-	-	-
History of Science & Technology	-	-	-
Department Total	274	82	356

<b>Foreign Languages and Literatures</b>			
Chinese	-	8	8
French	24	20	44
French Teaching	6	-	6
German	11	10	21
German Secondary Teaching	3	-	3
Italian	-	12	12
Japanese	35	3	38
Latin	2	1	3
Russian	3	3	6
Russian Teaching	-	-	-
Spanish	59	133	192
Spanish Minor - Alternate Track	-	-	-
Spanish Teaching	35	-	35
Department Total	178	190	368

<b>Philosophy</b>			
Philosophy	47	57	104
Department Total	47	57	104

<b>Health and Kinesiology</b>			
Health Promotion	42	-	42
Health & Safety Teaching	7	-	7
Physical Education Teaching (B.A.)	129	-	129
Movement & Sport Science	206	-	206
Exercise & Fitness / Health & Fitness	119	-	119
Pre-Athletic Training	65	-	65
Athletic Training	34	-	34
Temporary Physical Education	-	-	-
Physical Education Teaching (B.P.E.) - Secondary	-	-	-
Coaching Endorsement (Teaching)	-	-	-
Department Total	602	-	602

<b>Political Science</b>			
Political Science	458	71	529
Environmental Politics and Policy	-	2	2
Department Total	458	73	531

*Undergraduate Enrollment by Major/Minor (Continued) - Fall 2006*

**Data Digest 2006-07**

*College of Liberal Arts*

Major/Minor Area by Department	Major Enrollment	Minor Enrollment	Total Enrollment
<b>Psychological Sciences</b>			
Psychology	805	184	989
Behavioral Neuroscience Psychology	115	-	115
Department Total	920	184	1,104
<b>Sociology and Anthropology</b>			
Anthropology	53	27	80
Criminology-Law & Society	299	53	352
Sociology	98	99	197
Sociology / Anthropology	2	-	2
Department Total	452	179	631
<b>Communication</b>			
Pre-Communication	503	-	503
General Communication	46	71	117
Interpersonal Communication	1	-	1
Journalism	-	-	-
Mass Communication	-	-	-
Advertising	3	-	3
Organizational Communication	12	-	12
Public Relations	1	-	1
Public Relations & Rhetorical Advocacy	169	-	169
Telecommunications	4	-	4
Media, Technology and Society	-	-	-
Department Total	739	71	810
<b>General and Preparatory</b>			
General-Undecided	271	-	271
Pre-Allied Health	-	139	139
Pre-Dental	-	13	13
Pre-Law	-	185	185
Pre-Medicine	-	97	97
Undecided Pre-Law	8	-	8
Department Total	279	434	713

\*49 CODO students did not report minors.

The figures include 100% of all Economics majors.

Source: Liberal Arts Student Services Office

Major/Minor Area by Department	Major Enrollment	Minor Enrollment	Total Enrollment
<b>CODO</b>			
CODO-Minor Required	696	-	696
CODO - Agriculture	-	6	6
CODO - Consumer Family Science	-	111	111
CODO - Education	-	87	87
CODO - Engineering	-	61	61
CODO - Health Sciences	-	12	12
CODO - Management	-	222	222
CODO - Nursing	-	38	38
CODO - Pharmacy	-	14	14
CODO - Science	-	41	41
CODO - Technology	-	76	76
CODO - Vet Med	-	2	2
Department Total*	696	670	1,366

Minors Outside Liberal Arts	College	Enrollment
Agricultural Systems Management (AG)	AG	1
Animal Sciences (AG)	AG	1
Entomology (AG)	AG	-
Natural Resources & Environmental Science (AG)	AG	2
Wildlife Science (AG)	AG	1
Child Development and Family Studies (CFS)	CFS	91
Family Business (CFS)	CFS	3
Social Studies - Government Teaching	EDU	-
Social Studies - Psychology Teaching	EDU	-
Social Studies - U.S. History Teaching	EDU	-
Forensic Sciences (HLS)	HLS	126
Management (M)	MGMT	16
Biology (S)	SCI	-
Biology Teaching	SCI	-
Chemistry (S)	SCI	1
Computer Science (S)	SCI	2
Earth & Space Sciences Teaching	SCI	-
General Science Teaching	SCI	-
Mathematics (S)	SCI	6
Physics (S)	SCI	-
Computer Education Endorsement Teaching	TECH	-
Computer Technology (CPT)	TECH	17
Manufacturing Graphics (for ID majors only)(CGT)	TECH	1
Organizational Leadership (OLS)	TECH	135
Total	-	403

**Summary**

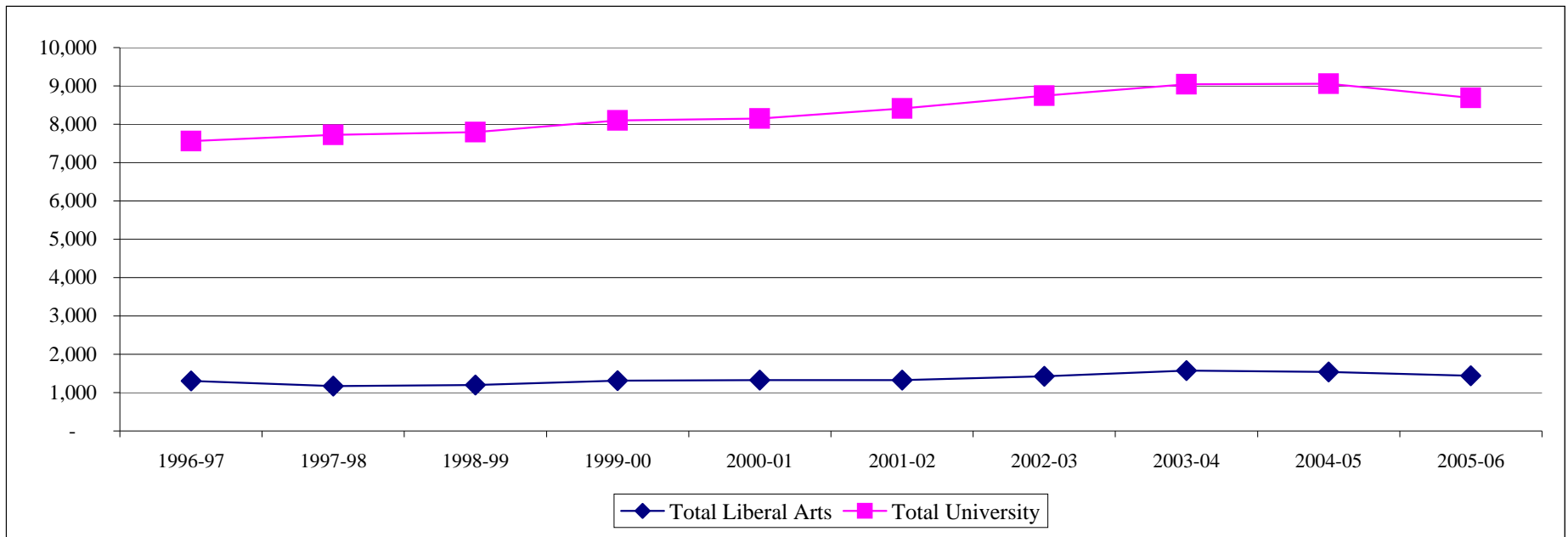
Number of Majors with Enrolled Students	60
Number of Minors within Liberal Arts with Enrolled Students	51
Number of Minors outside Liberal Arts with Enrolled Students	13
Total Enrollment of Majors	6,326
Total Enrollment of Minors	2,760

# Degrees Conferred by Degree Level

Data Digest 2006-07

College of Liberal Arts

Area	Degree Level	1996-97	1997-98	1998-99	1999-00	2000-01	2001-02	2002-03	2003-04	2004-05	2005-06
<b>Liberal Arts</b>	Baccalaureate	1,094	970	974	1,064	1,070	1,092	1,185	1,295	1,268	1,181
	Master's	144	119	158	159	162	149	166	204	182	182
	Doctorate	68	83	68	88	95	88	71	79	91	80
	<b>Total Liberal Arts</b>	<b>1,306</b>	<b>1,172</b>	<b>1,200</b>	<b>1,311</b>	<b>1,327</b>	<b>1,329</b>	<b>1,422</b>	<b>1,578</b>	<b>1,541</b>	<b>1,443</b>
<b>University</b>	Associate	596	616	682	732	640	669	683	644	543	529
	Baccalaureate	5,172	5,196	5,351	5,436	5,579	5,800	5,999	6,154	6,197	5,948
	Education Specialist	4	4	3	1	1	1	2	-	3	5
	Professional	97	103	134	176	184	192	203	216	239	219
	Master's	1,214	1,308	1,159	1,286	1,284	1,340	1,392	1,583	1,548	1,420
	Doctorate	478	496	466	468	464	409	463	446	524	566
	<b>Total University</b>	<b>7,561</b>	<b>7,723</b>	<b>7,795</b>	<b>8,099</b>	<b>8,152</b>	<b>8,411</b>	<b>8,742</b>	<b>9,043</b>	<b>9,054</b>	<b>8,687</b>
<b>Liberal Arts - % of University Total</b>		<b>17%</b>	<b>15%</b>	<b>15%</b>	<b>16%</b>	<b>16%</b>	<b>16%</b>	<b>16%</b>	<b>17%</b>	<b>17%</b>	<b>17%</b>



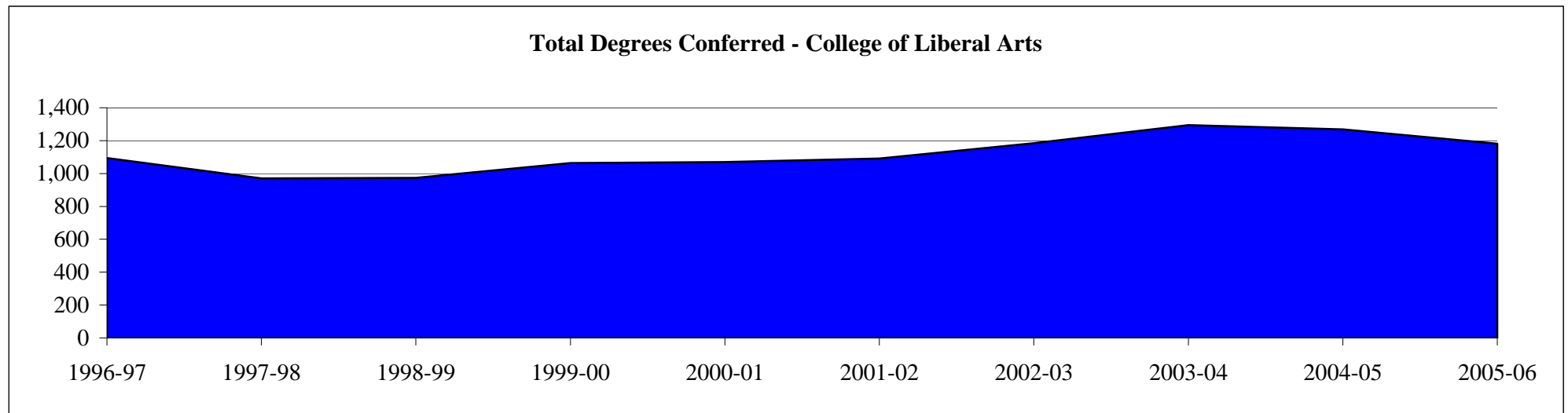
Source: University Data Digest

# Baccalaureate Degrees Conferred by Department

Data Digest 2006-07

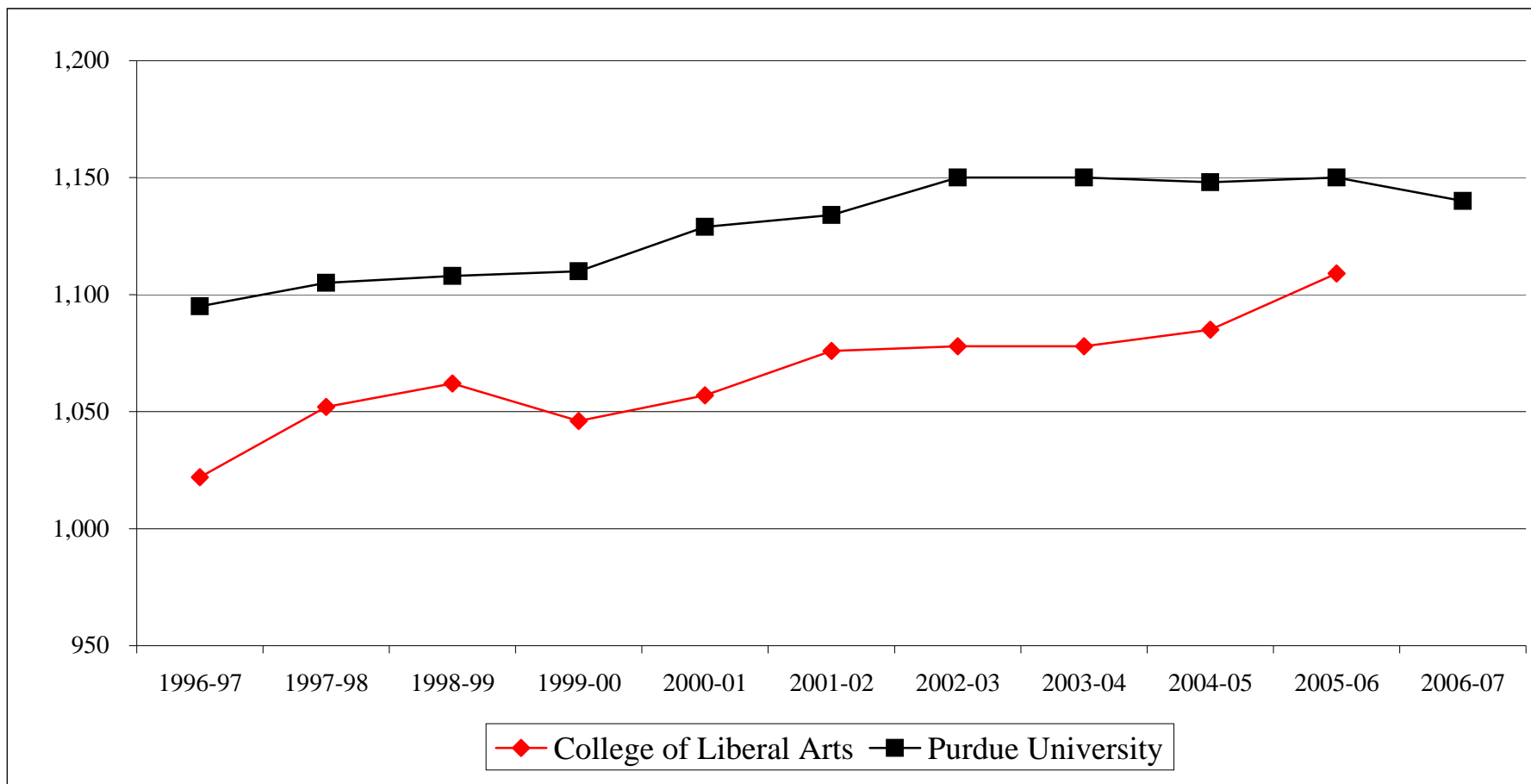
College of Liberal Arts

Department	1996-97	1997-98	1998-99	1999-00	2000-01	2001-02	2002-03	2003-04	2004-05	2005-06
Communication	253	209	211	240	258	316	283	265	203	166
Economics	32	26	24	29	0	0	0	0	0	0
English	103	101	87	97	115	105	144	148	134	132
Foreign Languages and Literatures	21	19	33	35	28	18	28	33	35	34
Health and Kinesiology	115	110	85	106	115	95	94	108	119	115
History	50	47	40	50	50	37	52	68	77	82
Interdisciplinary Studies	8	3	7	7	7	19	13	23	24	30
Philosophy	6	4	8	7	5	7	5	14	10	11
Political Science	59	49	60	59	61	53	67	102	90	87
Psychological Sciences	156	149	141	164	156	178	205	210	233	210
Sociology and Anthropology	120	99	114	105	97	105	118	127	130	118
Speech, Language, and Hearing Sciences	60	62	61	61	55	53	52	57	52	50
Visual & Performing Arts	111	92	103	104	123	106	124	140	161	146
<b>Total College of Liberal Arts</b>	<b>1,094</b>	<b>970</b>	<b>974</b>	<b>1,064</b>	<b>1,070</b>	<b>1,092</b>	<b>1,185</b>	<b>1,295</b>	<b>1,268</b>	<b>1,181</b>



Source: DSS Student Data

	1996-97	1997-98	1998-99	1999-00	2000-01	2001-02	2002-03	2003-04	2004-05	2005-06	2006-07
College of Liberal Arts	1,022	1,052	1,062	1,046	1,057	1,076	1,078	1,078	1,085	1,109	
Purdue University	1,095	1,105	1,108	1,110	1,129	1,134	1,150	1,150	1,148	1,150	1,140



Source: DSS Student Test Scores

Fall 2000 Beginning Students<sup>1</sup>

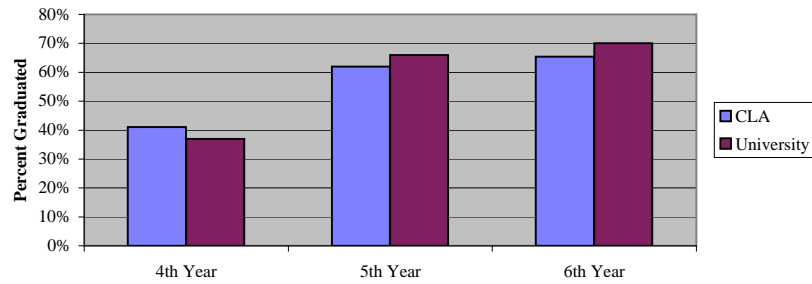
	Status			
	Enrollment		Voluntarily	Academic
	Continued	Graduated	Withdrew	Dismissal
After Year 1	84%	0%	18%	4%
After Year 2	73%	0%	24%	7%
After Year 3	69%	4%	26%	9%
After Year 4	25%	41%	27%	10%
After Year 5	5%	62%	27%	11%
After Year 6	2%	65%	27%	11%

N=1166

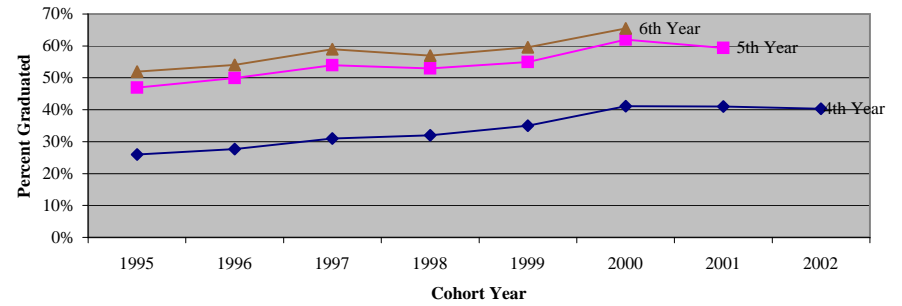
Historical Graduation Rate

Fall	Beginning	First-Year	Graduated	Graduated	Graduated
Beginners	Enrollment	Retention	Within	Within	Within
		Rate	4 Years	5 Years	6 Years
1995	1,448	75%	26%	47%	52%
1996	1,287	76%	28%	50%	54%
1997	1,251	79%	31%	54%	59%
1998	1,346	79%	32%	53%	57%
1999	1,351	79%	35%	55%	60%
2000	1,166	84%	41%	62%	65%
2001	1,153	81%	41%	59%	-
2002	1,010	82%	40%	-	-

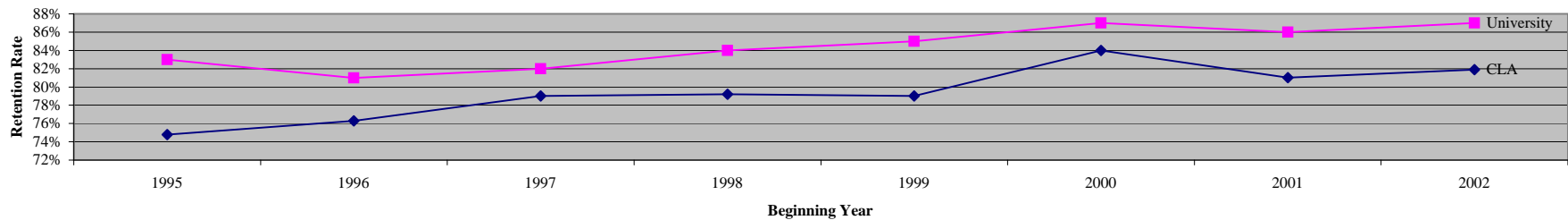
2000  
CLA Beginning Students Degree Completed



CLA Historical Graduation Rates



Historical First-Year Retention Rate



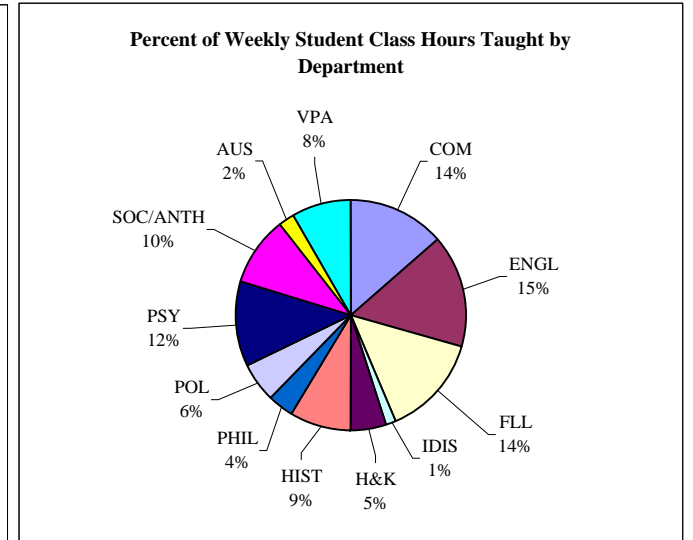
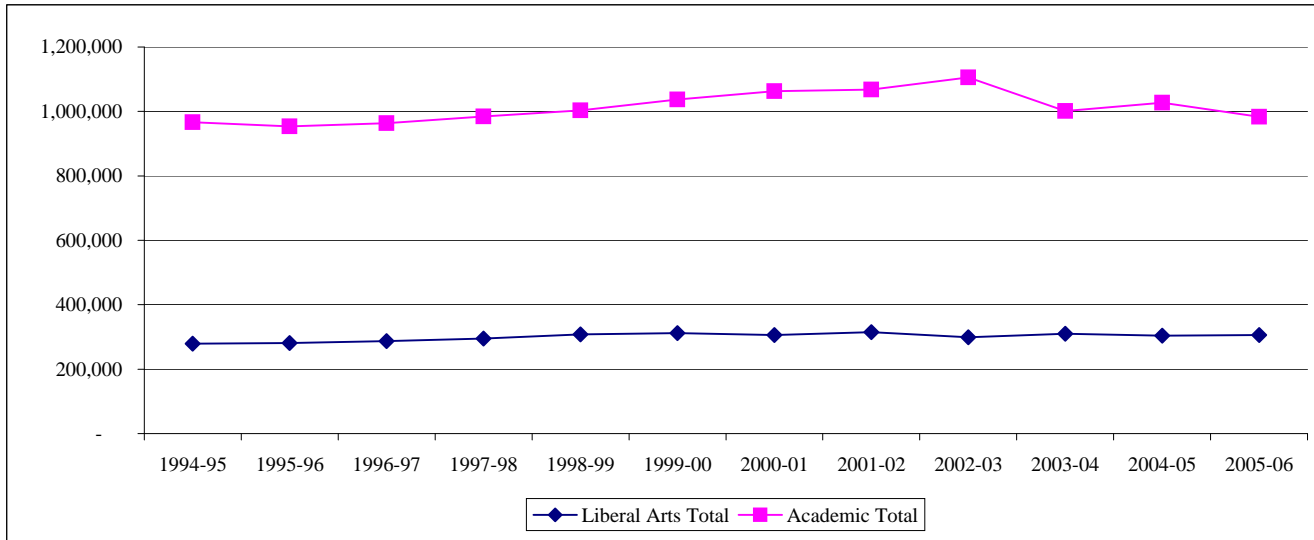
<sup>1</sup> Degree-seeking first-year students who enrolled in summer or fall 2000

Source: University Data Digest and DSS Student Retention Status





Department	1994-95	1995-96	1996-97	1997-98	1998-99	1999-00	2000-01	2001-02	2002-03	2003-04	2004-05	2005-06
Communication	40,703	40,976	41,209	42,294	44,233	46,139	46,343	46,547	43,107	42,307	40,199	41,640
English	52,687	54,458	56,578	58,084	59,251	61,961	58,356	60,447	56,282	49,957	47,968	48,530
Foreign Languages and Literatures	33,865	35,331	36,414	37,894	38,910	39,274	39,561	39,990	38,277	40,882	41,694	43,327
General Studies*	4,725	4,864	5,811	8,156	7,496	7,815	5,522	4,569	4,864	4,802	5,594	4,530
Health and Kinesiology	16,200	15,270	14,390	14,657	13,971	14,171	14,582	14,213	13,991	15,117	15,399	14,541
History	23,145	23,433	25,280	23,073	25,960	25,302	24,977	25,818	24,305	25,573	24,274	26,347
Philosophy	9,137	8,987	9,089	10,460	11,068	10,971	10,984	11,545	11,160	12,232	12,117	11,514
Political Science	11,289	12,118	13,334	13,956	14,291	13,722	14,400	15,522	14,784	16,340	16,773	17,169
Psychological Sciences	35,777	35,672	35,012	34,761	37,061	37,546	36,073	38,959	36,151	40,626	36,669	36,171
Sociology and Anthropology	24,210	23,153	23,080	22,896	23,471	23,386	23,930	24,461	23,069	24,985	29,514	30,189
Speech, Language, and Hearing Sciences	6,143	5,600	5,768	6,468	7,988	7,679	6,609	6,962	6,891	7,590	7,179	6,729
Visual and Performing Arts	21,693	21,648	21,467	22,523	23,983	24,355	24,515	25,412	25,793	29,835	26,853	25,182
<b>Liberal Arts Total</b>	<b>279,574</b>	<b>281,510</b>	<b>287,432</b>	<b>295,222</b>	<b>307,683</b>	<b>312,321</b>	<b>305,852</b>	<b>314,445</b>	<b>298,674</b>	<b>310,246</b>	<b>304,233</b>	<b>305,869</b>
<b>% of Academic Total</b>	<b>30%</b>	<b>29%</b>	<b>29%</b>	<b>29%</b>	<b>29%</b>	<b>30%</b>	<b>29%</b>	<b>29%</b>	<b>27%</b>	<b>31%</b>	<b>30%</b>	<b>31%</b>
<b>Academic Total</b>	<b>966,976</b>	<b>953,667</b>	<b>963,312</b>	<b>984,167</b>	<b>1,003,021</b>	<b>1,036,822</b>	<b>1,062,637</b>	<b>1,068,069</b>	<b>1,105,690</b>	<b>1,001,296</b>	<b>1,027,085</b>	<b>983,610</b>



\* General Studies include: Interdisciplinary Studies, Counseling & Student Services, Women Studies, & African American Studies

Source: Space Management & Academic Scheduling

Fall Semester Average Class Size by Department - (Organized Classes)

Class Enrollment	2002	2003	2004	2005	2006
Communication	7,432	7,320	7,031	7,491	7,838
English	10,608	10,271	10,354	10,676	11,284
Foreign Languages and Literatures	9,358	9,925	10,214	10,411	10,507
General Studies*	970	370	1,306	996	1,329
Health and Kinesiology	3,444	4,092	4,072	4,063	4,282
History	4,246	4,718	3,678	4,442	3,997
Philosophy	2,511	2,668	2,662	2,428	2,634
Political Science	2,937	2,866	2,750	2,827	2,482
Psychological Sciences	7,462	7,670	7,148	6,900	7,181
Sociology and Anthropology	4,017	4,467	4,909	5,187	5,380
Speech, Language, and Hearing Sciences	1,290	1,665	1,218	1,391	1,653
Visual & Performing Arts	6,533	7,018	6,889	6,570	6,395
<b>Total College of Liberal Arts</b>	<b>60,807</b>	<b>63,051</b>	<b>62,231</b>	<b>63,381</b>	<b>64,962</b>

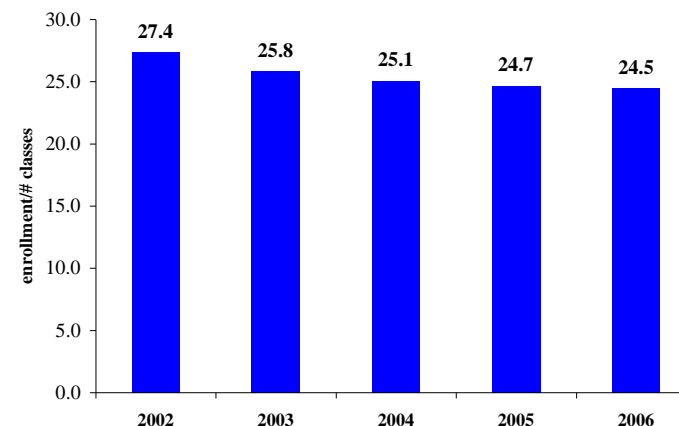
Number of Classes	2002	2003	2004	2005	2006
Communication	266	266	243	261	275
English	455	641	642	659	728
Foreign Languages and Literatures	418	427	480	482	491
General Studies*	52	14	57	51	57
Health and Kinesiology	157	179	202	227	192
History	82	78	52	64	71
Philosophy	73	77	74	71	71
Political Science	62	65	55	57	47
Psychological Sciences	132	144	147	125	136
Sociology and Anthropology	75	77	80	91	100
Speech, Language, and Hearing Sciences	109	116	108	122	145
Visual & Performing Arts	342	358	344	359	342
<b>Total College of Liberal Arts</b>	<b>2,222</b>	<b>2,441</b>	<b>2,484</b>	<b>2,569</b>	<b>2,655</b>

Average Class Size	2002	2003	2004	2005	2006
Communication	28.0	27.5	28.9	28.7	28.5
English	23.3	16.0	16.1	16.2	15.5
Foreign Languages and Literatures	22.4	23.2	21.3	21.6	21.4
General Studies*	18.7	26.2	22.9	19.5	23.3
Health and Kinesiology	21.9	22.9	20.2	17.9	22.3
History	51.7	60.5	70.7	69.4	56.3
Philosophy	34.4	34.6	36.0	34.2	37.1
Political Science	47.4	44.4	50.0	49.6	52.8
Psychological Sciences	56.5	53.2	48.6	55.2	52.8
Sociology and Anthropology	53.6	58.0	61.4	57.0	53.8
Speech, Language, and Hearing Sciences	11.8	14.4	11.3	11.4	11.4
Visual & Performing Arts	19.1	19.6	20.0	18.3	18.7
<b>Total College of Liberal Arts</b>	<b>27.4</b>	<b>25.8</b>	<b>25.1</b>	<b>24.7</b>	<b>24.5</b>

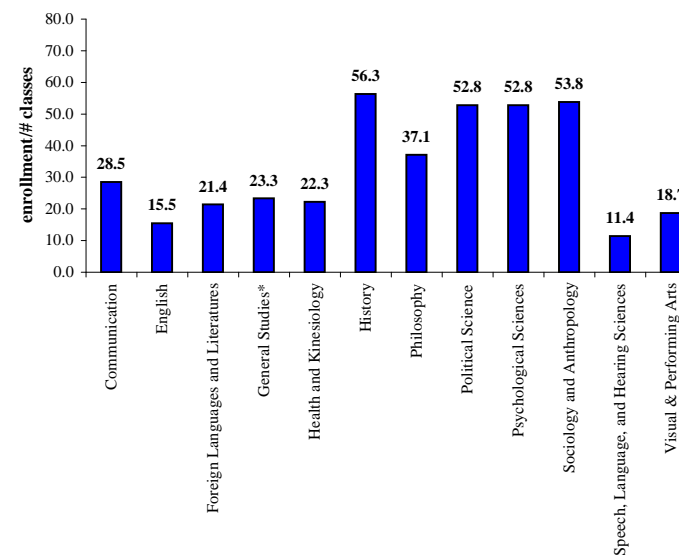
\* General Studies include: Interdisciplinary Studies, Counseling & Student Services, & Women Studies

Source: Space Management & Academic Scheduling

Liberal Arts Average Class Size



Avg. Class Size by Dept. - Fall 2006



*Weekly Class Hours per 010 Fund Faculty FTE*

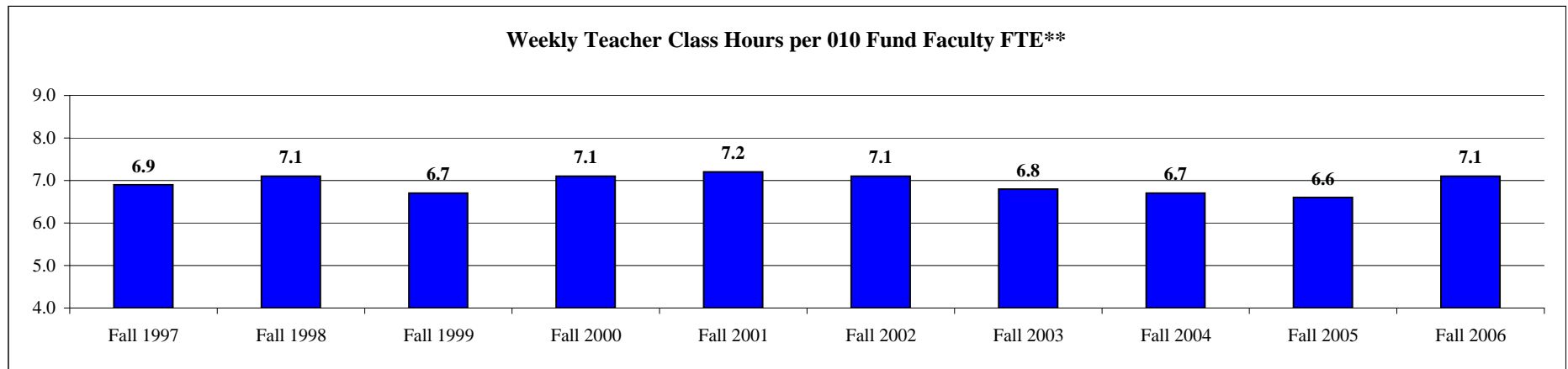
**Data Digest 2006-07**

*College of Liberal Arts*

Department	Fall 1997	Fall 1998	Fall 1999	Fall 2000	Fall 2001	Fall 2002	Fall 2003	Fall 2004	Fall 2005	Fall 2006
Communication	6.4	6.2	5.8	5.7	6.5	6.5	6.0	5.4	6.0	6.2
English	6.4	7.0	7.4	7.6	7.0	6.2	6.6	6.7	6.6	6.8
Foreign Languages and Literatures	7.9	6.8	7.9	7.9	8.5	8.1	7.9	7.4	7.5	7.8
General Studies	4.6	5.0	3.5	5.2	3.6	6.0	-	-	-	-
Health and Kinesiology	9.1	7.5	8.1	7.5	7.0	7.4	8.8	10.8*	11.4	9.1
History	4.6	4.8	5.7	5.4	5.6	4.8	4.9	5.0	5.5	5.7
Philosophy	4.3	3.9	4.8	5.0	4.2	5.1	4.3	3.8	3.7	3.5
Political Science	4.9	4.5	4.3	4.4	4.8	5.0	5.4	5.1	5.0	4.0
Psychological Sciences	6.2	5.8	5.1	5.0	5.3	5.1	4.4	4.4	4.1	5.3
Sociology and Anthropology	5.1	5.1	5.1	5.8	5.0	5.5	4.9	5.1	5.5	4.8
Speech, Language, and Hearing Sciences	6.5	6.7	5.6	7.0	6.2	5.3	5.1	4.7	3.5	11.8
Visual and Performing Arts	12.5	11.4	12.6	12.9	11.8	10.9	11.5	10.9	11.3	11.0
<b>College</b>	<b>6.9</b>	<b>7.1</b>	<b>6.7</b>	<b>7.1</b>	<b>7.2</b>	<b>7.1</b>	<b>6.8</b>	<b>6.7</b>	<b>6.6</b>	<b>7.1</b>

All Colleges	Fall 1997	Fall 1998	Fall 1999	Fall 2000	Fall 2001	Fall 2002	Fall 2003	Fall 2004	Fall 2005	Fall 2006
<b>High</b>	13.5	13.5	12.4	11.9	11.9	12.0	10.7	15.1	11.4	11.8
<b>Median</b>	<b>6.9</b>	<b>7.1</b>	<b>6.7</b>	<b>7.1</b>	<b>7.2</b>	<b>7.1</b>	<b>6.8</b>	<b>6.7</b>	<b>6.6</b>	<b>6.8</b>
<b>Low</b>	4.4	4.2	4.3	4.6	4.3	4.3	4.0	4.0	0.9	0.0



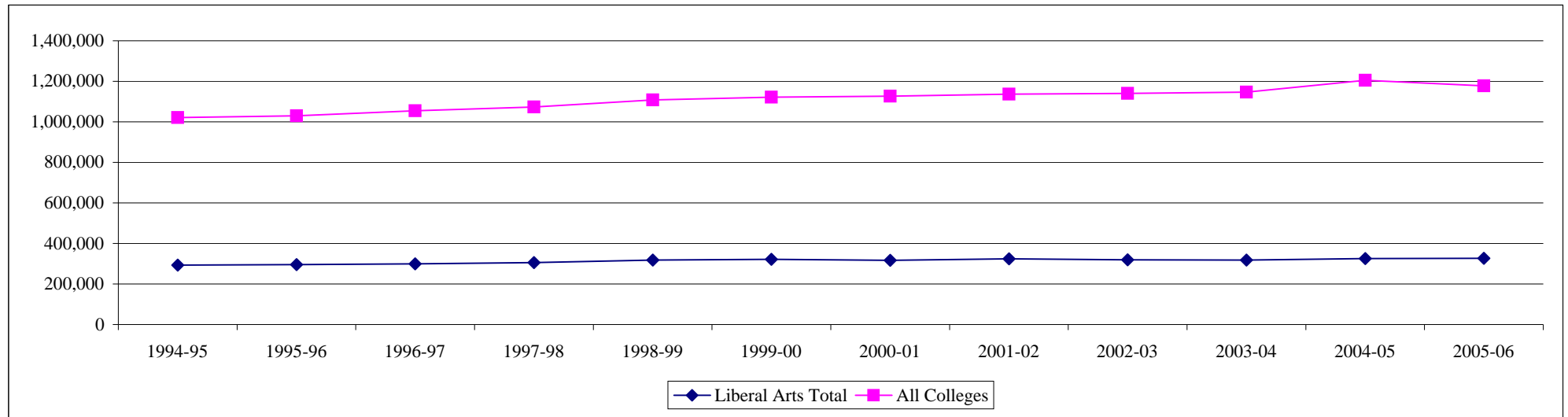
\* HK 201, 301, and 401 are excluded.

\*\* Beginning in 2003, these data include deans and department heads.

Organized classes only.

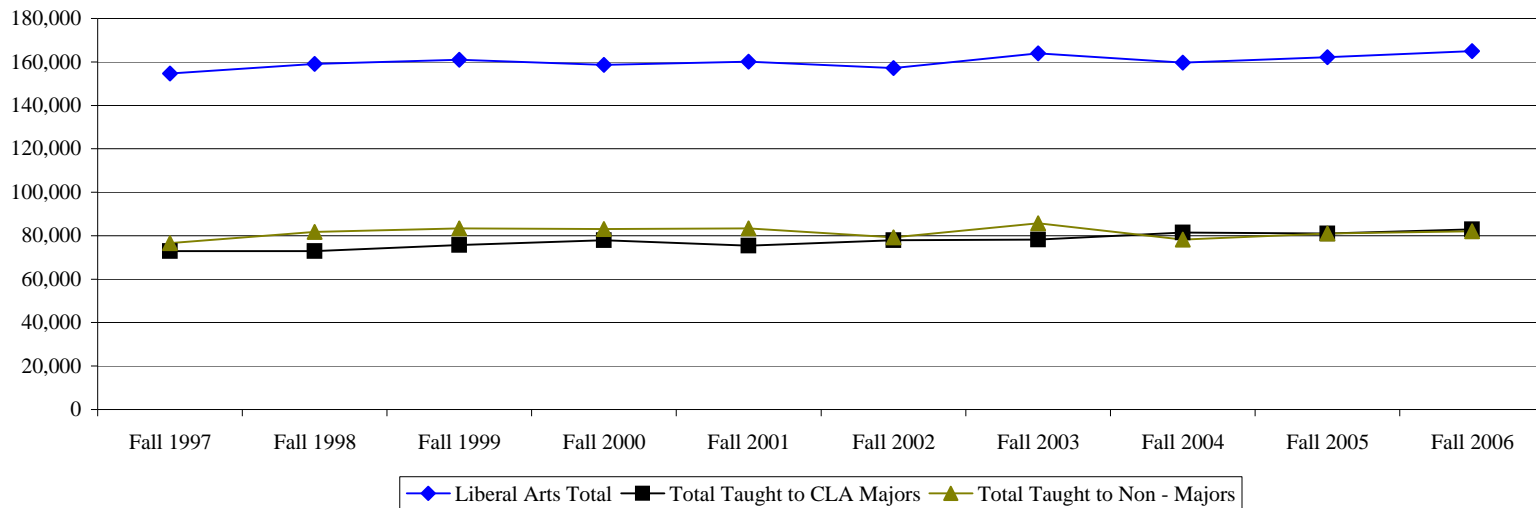
Source: Space Management & Academic Scheduling

	1994-95	1995-96	1996-97	1997-98	1998-99	1999-00	2000-01	2001-02	2002-03	2003-04	2004-05	2005-06
Liberal Arts Total	293,165	295,638	298,970	305,783	317,985	321,145	317,118	324,096	319,573	317,994	325,423	326,330
% of Academic Total	28.7%	28.7%	28.3%	28.5%	28.7%	28.6%	28.1%	28.5%	28.0%	27.7%	27.0%	27.7%
All Colleges	1,021,271	1,030,011	1,055,084	1,073,741	1,108,280	1,121,532	1,127,026	1,136,739	1,139,995	1,146,267	1,205,221	1,177,209



Source: Space Management & Academic Scheduling

Departments	Fall 1997	Fall 1998	Fall 1999	Fall 2000	Fall 2001	Fall 2002	Fall 2003	Fall 2004	Fall 2005	Fall 2006
Communication	20,451	21,572	22,576	22,366	22,110	20,741	20,736	19,113	20,143	21,245
English	30,857	31,895	33,397	31,575	31,156	30,123	24,903	24,761	25,058	26,497
Foreign Languages and Literatures	22,914	23,135	22,903	22,953	23,070	22,229	24,987	24,654	25,338	25,720
General Studies*	3,076	2,651	3,061	2,352	2,336	2,447	2,448	2,844	2,725	3,162
Health and Kinesiology	9,773	9,253	8,790	9,186	8,949	8,500	10,627	10,774	10,130	10,747
History	10,598	11,662	11,030	11,806	11,142	10,282	11,639	10,807	13,033	11,782
Philosophy	4,433	4,798	4,686	4,565	4,919	5,107	5,617	5,450	4,987	5,279
Political Science	6,229	6,168	6,063	6,127	6,812	7,268	8,337	7,871	8,101	7,058
Psychological Sciences	16,199	17,245	17,499	15,952	18,227	18,013	19,779	19,097	17,686	18,530
Sociology and Anthropology	10,569	10,632	10,574	11,182	10,968	11,094	12,202	13,348	14,499	14,485
Speech, Language, and Hearing Sciences	3,847	3,653	3,690	3,523	3,376	3,422	4,063	2,931	3,358	3,937
Visual and Performing Arts	15,785	16,428	16,697	17,111	16,985	17,923	18,608	18,052	17,083	16,539
<b>Liberal Arts Total</b>	<b>154,731</b>	<b>159,092</b>	<b>160,966</b>	<b>158,698</b>	<b>160,050</b>	<b>157,149</b>	<b>163,946</b>	<b>159,702</b>	<b>162,141</b>	<b>164,981</b>
<b>Total Taught to CLA Majors</b>	<b>72,965</b>	<b>72,919</b>	<b>75,679</b>	<b>77,877</b>	<b>75,367</b>	<b>77,938</b>	<b>78,260</b>	<b>81,511</b>	<b>81,071</b>	<b>82,981</b>
<b>% of Liberal Arts Total</b>	<b>47%</b>	<b>46%</b>	<b>47%</b>	<b>49%</b>	<b>47%</b>	<b>50%</b>	<b>48%</b>	<b>51%</b>	<b>50%</b>	<b>50%</b>
<b>Total Taught to Non - Majors</b>	<b>76,625</b>	<b>81,812</b>	<b>83,413</b>	<b>83,089</b>	<b>83,331</b>	<b>79,211</b>	<b>85,686</b>	<b>78,191</b>	<b>81,070</b>	<b>82,000</b>
<b>% of Liberal Arts Total</b>	<b>50%</b>	<b>51%</b>	<b>52%</b>	<b>52%</b>	<b>52%</b>	<b>50%</b>	<b>52%</b>	<b>49%</b>	<b>50%</b>	<b>50%</b>



\* General Studies include: Interdisciplinary Studies and Counseling & Student Services

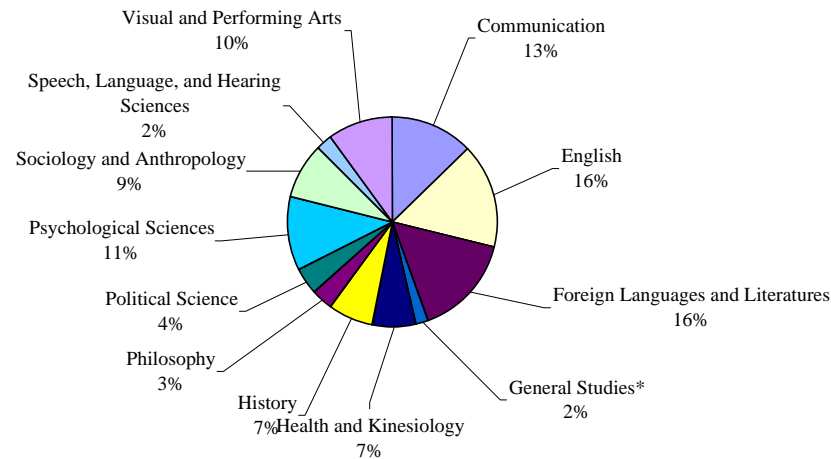
Source: Space Management & Academic Scheduling

Type of Instruction	Tenure and tenure-track faculty	Non-tenure track appointment	Graduate student staff	All other instructors	Total	Percent of All WSCH
<b>College of Liberal Arts Total</b>						
<b>ORGANIZED CLASS INSTRUCTION</b>						
Non-laboratory class instruction						
Lecture	54,398	25,443	56,375	2,430	138,646	
Recitation	226	862	4,707	301	6,096	
<b>Total non-lab</b>	54,624	26,305	61,082	2,731	144,742	87%
<b>Percent of all non-lab WSCH</b>	38%	18%	42%	2%	100%	
Laboratory class instruction						
Laboratory	3,859	6,467	8,165	857	19,348	
Lab preparatory	-	-	-	-	-	
Clinics	69	223	-	599	891	
<b>Total lab</b>	3,928	6,690	8,165	1,456	20,239	13%
<b>Percent of all lab WSCH</b>	19%	33%	40%	7%	100%	
<b>ALL ORGANIZED CLASSES</b>	58,552	32,995	69,247	4,187	164,981	100%
Percent of all organized WSCH	35%	20%	42%	3%	100%	

Source: Space Management & Academic Scheduling

Departments	Tenure and tenure-track faculty	%	Non-tenure track appointment	%	Graduate student staff	%	All other instructors	%	Total	Pct of all WSCH
<i>Communication</i>	5,771	27%	2,389	11%	12,837	60%	248	1%	21,245	13%
<i>English</i>	5,965	23%	5,120	19%	15,271	58%	142	1%	26,498	16%
<i>Foreign Languages and Literatures</i>	3,652	14%	8,198	32%	13,371	52%	499	2%	25,720	16%
<i>General Studies*</i>		0%	57	2%	1,556	49%	1,546	49%	3,159	2%
<i>Health and Kinesiology</i>	2,448	23%	3,295	31%	3,763	35%	1,241	12%	10,747	7%
<i>History</i>	8,664	74%	147	1%	2,971	25%	-	0%	11,782	7%
<i>Philosophy</i>	3,166	60%	-	0%	2,114	40%	-	0%	5,280	3%
<i>Political Science</i>	5,150	73%	-	0%	1,908	27%	-	0%	7,058	4%
<i>Psychological Sciences</i>	9,334	50%	3,613	19%	5,518	30%	65	0%	18,530	11%
<i>Sociology and Anthropology</i>	7,140	49%	2,538	18%	4,706	32%	102	1%	14,486	9%
<i>Speech, Language, and Hearing Sciences</i>	2,303	58%	1,067	27%	547	14%	20	1%	3,937	2%
<i>Visual and Performing Arts</i>	4,922	30%	6,572	40%	4,724	29%	321	2%	16,539	10%
<b>Liberal Arts Total</b>	<b>58,515</b>	<b>35%</b>	<b>32,996</b>	<b>20%</b>	<b>69,286</b>	<b>42%</b>	<b>4,184</b>	<b>3%</b>	<b>164,981</b>	<b>100%</b>

WSCH as Percent of CLA Total



\* General Studies include: Interdisciplinary Studies and Counseling & Student Services



## All Campus

Summary Data for 2006 - Purdue University at W. Lafayette

	1	1a	2	2a	3	3a	4	4a	5	5a	6	7	7a	8	8a	9	9a
	WCH per FTE Gen. Fund 3F-8F Fac		WCH per FTE Gen. Fund Grad Asst		WSCH per FTE Gen. Fund 3F-8F Fac		WSCH per FTE Gen. Fund Grad Asst		% WSCH taught by Gen. Fund		% WSCH taught to non majors	Student Credit Hour per Gen. Fund FTE		Gen. Fund expenditures per credit		Sponsd Program exp per Ten/ Ten Trck FTE	
	Fall '06	01-06 Change	Fall '06	01-06 Change	Fall '06	01-06 Change	Fall '06	01-06 Change	3F-8F Faculty	Grad Asst	Fall '06	3F-8F Faculty	Grad Asst	2005-06	2001-02 in '05 \$	2005-06	FY 01-05 Change
AGR	5.2	-2%	1.4	-40%	173	-8%	21	-43%	85%	4%	31%	160	10	\$603	\$642	\$139,474	+22%
CFS	6.5	-7%	3.4	-23%	292	+8%	104	-28%	79%	14%	22%	290	77	\$203	\$216	\$183,915	+17%
EDUC	3.7	-29%	4.5	-7%	73	-26%	94	-10%	57%	31%	51%	122	93	\$264	\$204	\$28,489	-41%
ENGR	4.0	-39%	3.4	-13%	164	-19%	52	-21%	77%	17%	4%	154	22	\$556	\$501	\$241,291	+8%
LA	7.1	+2%	7.5	+2%	199	-8%	183	-1%	55%	42%	49%	191	171	\$156	\$144	\$26,249	+18%
MGMT	5.9	+1%	2.2	-12%	341	-1%	101	-16%	86%	11%	33%	347	106	\$197	\$185	\$84,777	+7%
PNHS	7.0	-5%	2.6	+15%	159	-10%	32	-16%	63%	4%	6%	131	15	\$382	\$409	\$181,514	+33%
SCI	3.7	-17%	6.2	-1%	214	-14%	175	-1%	52%	39%	78%	217	127	\$262	\$231	\$179,050	+3%
TECH	9.5	-16%	11.8	+9%	279	-4%	216	-1%	80%	16%	18%	257	127	\$191	\$167	\$11,712	+266%
V MED	18.4	+66%	1.2	-71%	176	+99%	57	+2%	83%	5%	3%	75	14	\$926	\$985	\$116,952	+21%
<b>TOTAL</b>	<b>6.2</b>	<b>-8%</b>	<b>5.6</b>	<b>-3%</b>	<b>203</b>	<b>-7%</b>	<b>137</b>	<b>-6%</b>	<b>65%</b>	<b>28%</b>	<b>42%</b>	<b>193</b>	<b>109</b>	<b>\$277</b>	<b>\$258</b>	<b>\$127,395</b>	<b>+16%</b>

All Campus

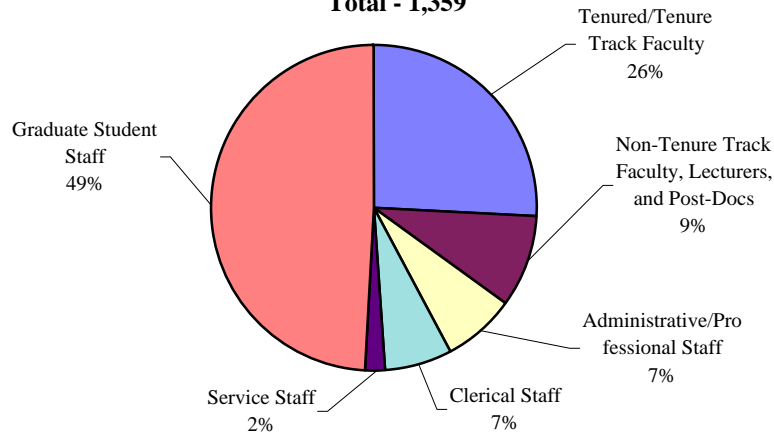
High	18.4	11.8	341	216	86%	42%	78%	347	171	\$926	\$241,291
Median	5.9	4.5	199	101	63%	17%	49%	191	106	\$262	\$128,213
Low	3.7	1.2	73	21	52%	4%	3%	75	10	\$156	\$11,712



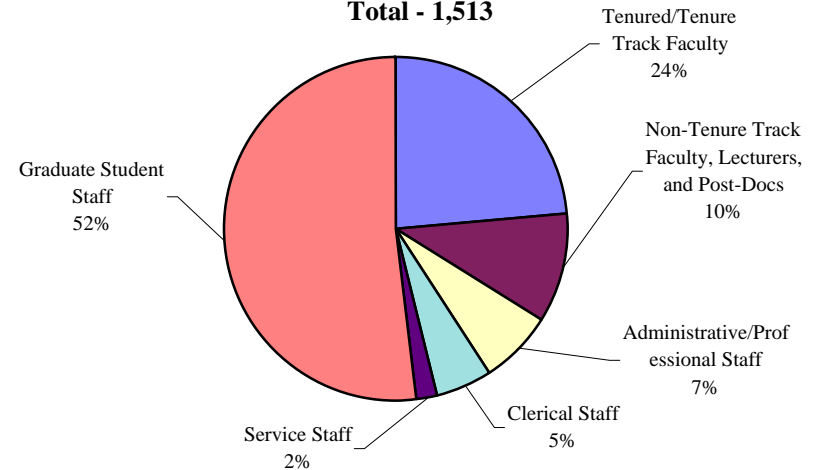
*Faculty & Staff Headcount*  
 (for Fall Semester in Academic Years)

Classification	1997	1998	1999	2000	2001	2002	2003	2004	2005	2006
Tenured/Tenure Track Faculty	352	365	353	343	347	352	348	355	351	358
Non-Tenure Track Faculty, Lecturers, and Post-Docs	125	122	128	125	130	132	129	124	156	156
Administrative/Professional Staff	96	93	99	100	103	107	114	114	106	103
Clerical Staff	91	92	94	94	86	92	84	84	80	80
Service Staff	25	21	20	20	23	19	19	22	25	28
Graduate Student Staff	670	702	727	748	748	787	773	795	777	788
<b>Total</b>	<b>1,359</b>	<b>1,395</b>	<b>1,421</b>	<b>1,430</b>	<b>1,437</b>	<b>1,489</b>	<b>1,467</b>	<b>1,494</b>	<b>1,495</b>	<b>1,513</b>

**Faculty and Staff Headcount 1997**  
 Total - 1,359



**Faculty and Staff Headcount 2006**  
 Total - 1,513



Source: DSS Employee Workforce Data

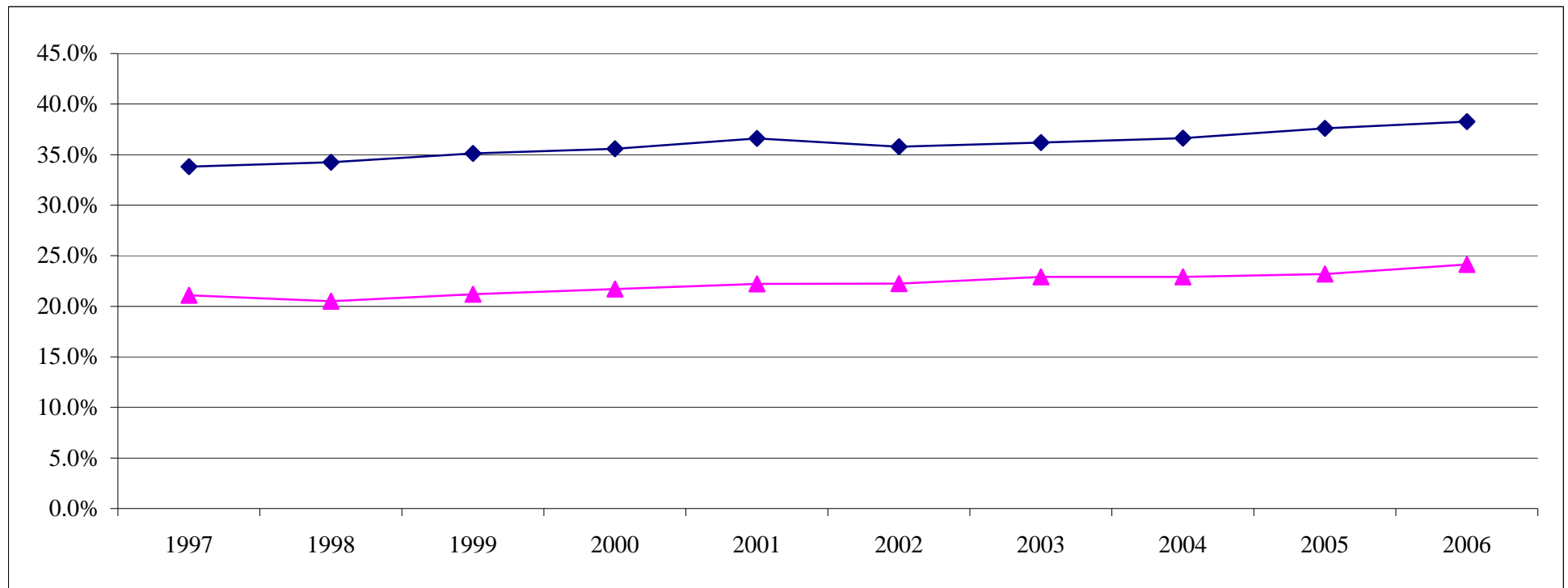
# Tenured and Tenure Track Faculty Headcount by Gender

(for Fall Semester in Academic Years)

Data Digest 2006-07

College of Liberal Arts

Gender	1997	1998	1999	2000	2001	2002	2003	2004	2005	2006
Men	233	240	229	221	220	226	222	225	219	221
Women	119	125	124	122	127	126	126	130	132	137
<b>Total Liberal Arts</b>	<b>352</b>	<b>365</b>	<b>353</b>	<b>343</b>	<b>347</b>	<b>352</b>	<b>348</b>	<b>355</b>	<b>351</b>	<b>358</b>
<b>Liberal Arts Women Faculty Percentage</b>	<b>33.8%</b>	<b>34.2%</b>	<b>35.1%</b>	<b>35.6%</b>	<b>36.6%</b>	<b>35.8%</b>	<b>36.2%</b>	<b>36.6%</b>	<b>37.6%</b>	<b>38.3%</b>
<b>University Women Faculty Percentage</b>	<b>21.1%</b>	<b>20.5%</b>	<b>21.2%</b>	<b>21.7%</b>	<b>22.2%</b>	<b>22.2%</b>	<b>22.9%</b>	<b>22.9%</b>	<b>23.2%</b>	<b>24.1%</b>

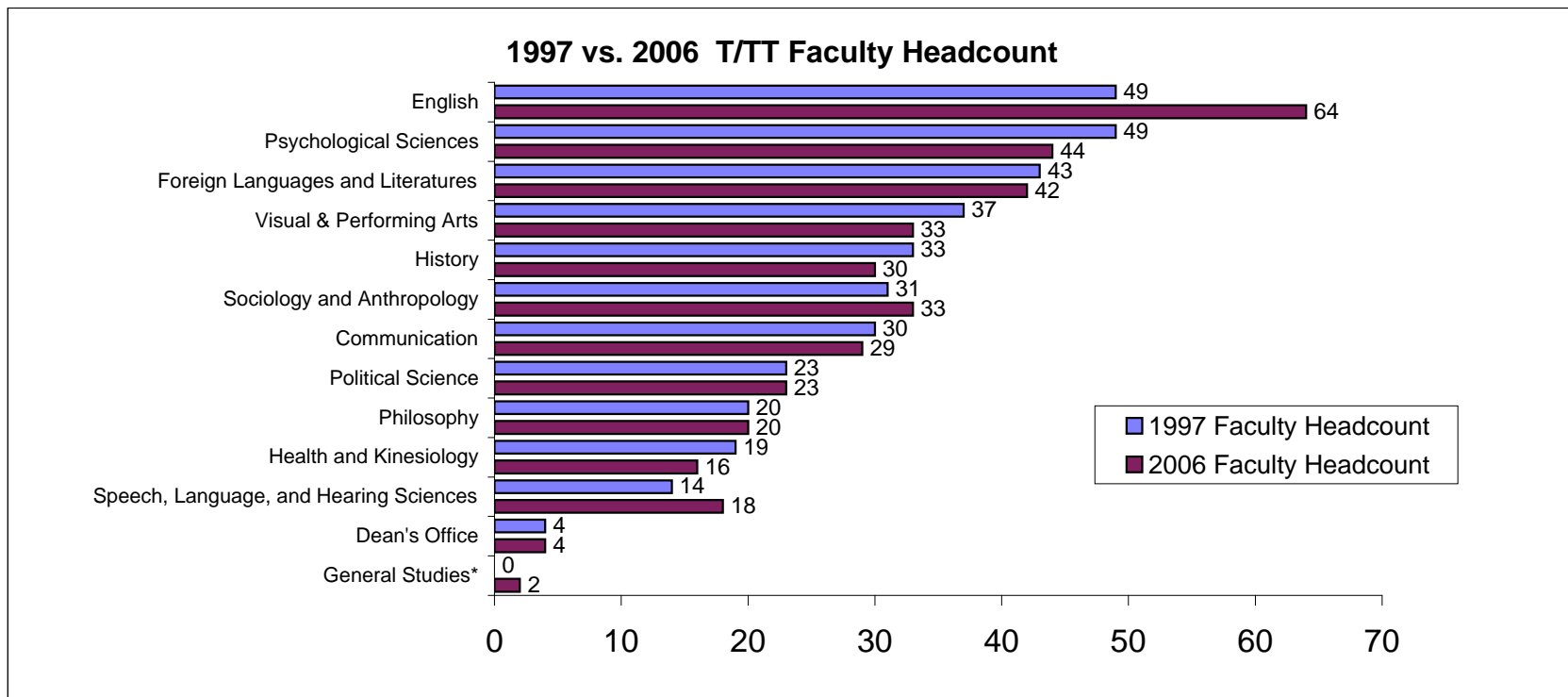


Source: DSS Employee Workforce Data

*Tenured and Tenure Track Faculty Headcount by Department*  
 (for Fall Semester in Academic Years)

**Data Digest 2006-07**  
 College of Liberal Arts

Department	1997	1998	1999	2000	2001	2002	2003	2004	2005	2006
Communication	30	32	33	33	28	30	28	28	31	29
Dean's Office	4	3	3	3	3	3	3	3	3	4
English	49	53	50	51	54	56	56	59	57	64
Foreign Languages and Literatures	43	44	45	43	38	41	40	42	41	42
General Studies*	0	0	0	0	0	0	1	1	1	2
Health and Kinesiology	19	19	17	16	17	16	16	15	12	16
History	33	33	32	32	32	32	28	27	29	30
Philosophy	20	20	17	17	19	18	18	18	19	20
Political Science	23	26	26	24	25	26	26	27	27	23
Psychological Sciences	49	48	47	45	47	45	47	48	44	44
Sociology and Anthropology	31	33	32	29	31	29	29	33	33	33
Speech, Language, and Hearing Sciences	14	16	15	15	16	16	17	17	18	18
Visual & Performing Arts	37	38	36	35	37	40	39	37	36	33
<b>Total College of Liberal Arts</b>	<b>352</b>	<b>365</b>	<b>353</b>	<b>343</b>	<b>347</b>	<b>352</b>	<b>348</b>	<b>355</b>	<b>351</b>	<b>358</b>



\* General Studies include: Interdisciplinary Studies, Counseling & Student Services, Women Studies, & Afro-American Studies Center

Source: DSS Employee Workforce Data

*Tenured & Tenure Track Faculty Headcount by Race/Ethnicity*  
 (for Fall Semester in Academic Years, revised for consistency with University Data Digest)

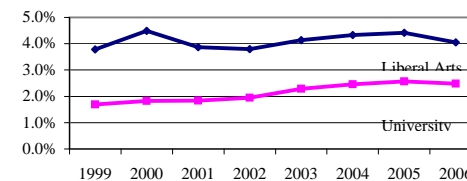
**Liberal Arts**

Race/Ethnicity	1999	2000	2001	2002	2003	2004	2005	2006
African American	13	15	13	13	14	15	15	14
Asian American	12	13	12	19	17	20	19	22
American Indian	4	3	2	2	2	1	1	1
Hispanic	7	7	7	7	9	10	10	10
White and Other	308	296	302	302	296	300	295	299
International	9	9	11	9	10	9	11	12
<b>Total Faculty</b>	<b>353</b>	<b>343</b>	<b>347</b>	<b>352</b>	<b>348</b>	<b>355</b>	<b>351</b>	<b>358</b>
<b>Domestic</b>								
African American	3.8%	4.5%	3.9%	3.8%	4.1%	4.3%	4.4%	4.0%
Asian American	3.5%	3.9%	3.6%	5.5%	5.0%	5.8%	5.6%	6.4%
American Indian	1.2%	0.9%	0.6%	0.6%	0.6%	0.3%	0.3%	0.3%
Hispanic	2.0%	2.1%	2.1%	2.0%	2.7%	2.9%	2.9%	2.9%
<i>Total Domestic Minority Faculty</i>	<i>10.5%</i>	<i>11.4%</i>	<i>10.1%</i>	<i>12.0%</i>	<i>12.4%</i>	<i>13.3%</i>	<i>13.2%</i>	<i>13.6%</i>
White and Other	89.5%	88.6%	89.9%	88.0%	87.6%	86.7%	86.8%	86.4%
<b>International</b>	<b>2.5%</b>	<b>2.6%</b>	<b>3.2%</b>	<b>2.6%</b>	<b>2.9%</b>	<b>2.5%</b>	<b>3.1%</b>	<b>3.4%</b>

**University**

Race/Ethnicity	1999	2000	2001	2002	2003	2004	2005	2006
African American	28	30	30	32	38	41	43	43
Asian American	141	147	149	166	175	183	196	222
American Indian	6	5	5	6	6	5	5	3
Hispanic	27	26	29	28	33	35	35	38
White and Other	1456	1440	1424	1412	1411	1402	1393	1425
International	47	46	55	60	83	101	135	101
<b>Total Faculty</b>	<b>1,705</b>	<b>1,694</b>	<b>1,692</b>	<b>1,704</b>	<b>1,746</b>	<b>1,767</b>	<b>1,807</b>	<b>1,832</b>
<b>Domestic</b>								
African American	1.7%	1.8%	1.8%	1.9%	2.3%	2.5%	2.6%	2.5%
Asian American	8.5%	8.9%	9.1%	10.1%	10.5%	11.0%	11.7%	12.8%
American Indian	0.4%	0.3%	0.3%	0.4%	0.4%	0.3%	0.3%	0.2%
Hispanic	1.6%	1.6%	1.8%	1.7%	2.0%	2.1%	2.1%	2.2%
<i>Total Domestic Minority Faculty</i>	<i>12.2%</i>	<i>12.6%</i>	<i>13.0%</i>	<i>14.1%</i>	<i>15.2%</i>	<i>15.8%</i>	<i>16.7%</i>	<i>17.7%</i>
White and Other	87.8%	87.4%	87.0%	85.9%	84.8%	84.2%	83.3%	82.3%
<b>International</b>	<b>2.8%</b>	<b>2.7%</b>	<b>3.3%</b>	<b>3.5%</b>	<b>4.8%</b>	<b>5.7%</b>	<b>7.5%</b>	<b>5.5%</b>

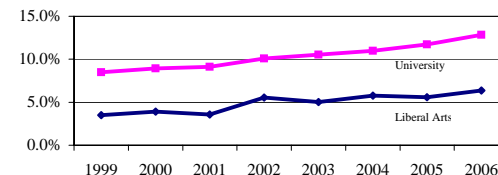
Percentage of African American Faculty



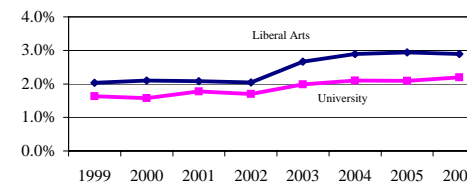
Percentage of American Indian Faculty



Percentage of Asian American Faculty



Percentage of Hispanic faculty



Source: DSS Employee Workforce Data

# Tenured & Tenure Track Faculty by Gender & Rank

Data Digest 2006-07

(for Fall Semester in Academic Years)

College of Liberal Arts

Rank	Gender	1997	1998	1999	2000	2001	2002	2003	2004	2005	2006
<b>Tenured and Tenure Track Faculty</b>											
Assistant Professors											
	Male	34	38	35	36	38	40	40	40	36	38
	Female	45	48	46	43	39	41	38	38	38	41
	<b>Total</b>	<b>79</b>	<b>86</b>	<b>81</b>	<b>79</b>	<b>77</b>	<b>81</b>	<b>78</b>	<b>78</b>	<b>74</b>	<b>79</b>
	% Male	43%	44%	43%	46%	49%	49%	51%	51%	49%	48%
	% Female	57%	56%	57%	54%	51%	51%	49%	49%	51%	52%
Associate Professors											
	Male	97	99	92	84	80	83	75	78	74	73
	Female	52	53	54	54	60	54	58	61	63	65
	<b>Total</b>	<b>149</b>	<b>152</b>	<b>146</b>	<b>138</b>	<b>140</b>	<b>137</b>	<b>133</b>	<b>139</b>	<b>137</b>	<b>138</b>
	% Male	65%	65%	63%	61%	57%	61%	56%	56%	54%	53%
	% Female	35%	35%	37%	39%	43%	39%	44%	44%	46%	47%
Professors											
	Male	102	103	102	101	102	103	107	107	109	110
	Female	22	24	24	25	28	31	30	31	31	31
	<b>Total</b>	<b>124</b>	<b>127</b>	<b>126</b>	<b>126</b>	<b>130</b>	<b>134</b>	<b>137</b>	<b>138</b>	<b>140</b>	<b>141</b>
	% Male	82%	81%	81%	80%	78%	77%	78%	78%	78%	78%
	% Female	18%	19%	19%	20%	22%	23%	22%	22%	22%	22%
<b>Summary</b>											
	<b>Male</b>	<b>233</b>	<b>240</b>	<b>229</b>	<b>221</b>	<b>220</b>	<b>226</b>	<b>222</b>	<b>225</b>	<b>219</b>	<b>221</b>
	% of Total	63%	68%	65%	61%	62%	66%	64%	63%	62%	62%
	<b>Female</b>	<b>119</b>	<b>125</b>	<b>124</b>	<b>122</b>	<b>127</b>	<b>126</b>	<b>126</b>	<b>130</b>	<b>132</b>	<b>137</b>
	% of Total	32%	35%	35%	33%	36%	37%	36%	37%	38%	38%
	<b>Grand Total</b>	<b>369</b>	<b>355</b>	<b>352</b>	<b>365</b>	<b>353</b>	<b>343</b>	<b>348</b>	<b>355</b>	<b>351</b>	<b>358</b>

Source: DSS Employee Workforce Data

*Tenured & Tenure Track Faculty by Race/Ethnicity & Rank*

**Data Digest 2006-07**

*(for Fall Semester in Academic Years)*

*College of Liberal Arts*

<b>Rank</b>	<b>Race/Ethnicity</b>	<b>1997</b>	<b>1998</b>	<b>1999</b>	<b>2000</b>	<b>2001</b>	<b>2002</b>	<b>2003</b>	<b>2004</b>	<b>2005</b>	<b>2006</b>
<b>Assistant Professors</b>											
	White/Other	58	62	64	57	54	59	55	53	47	54
	African American	3	5	5	6	6	5	5	6	6	3
	Hispanic	6	6	4	4	3	2	1	2	3	2
	Asian American	6	4	0	2	1	6	6	7	6	8
	American Indian	0	0	1	1	1	1	1	0	0	0
	International	4	4	7	8	10	8	10	9	11	12
	<b>Total Assistant Professors</b>	<b>77</b>	<b>81</b>	<b>81</b>	<b>78</b>	<b>75</b>	<b>81</b>	<b>78</b>	<b>77</b>	<b>73</b>	<b>79</b>
	<b>Minority %</b>	<b>19%</b>	<b>19%</b>	<b>12%</b>	<b>17%</b>	<b>15%</b>	<b>17%</b>	<b>17%</b>	<b>19%</b>	<b>21%</b>	<b>16%</b>
<b>Associate Professors</b>											
	White/Other	136	134	124	119	124	117	115	119	116	113
	African American	4	6	5	5	4	6	6	7	7	9
	Hispanic	0	0	3	3	4	5	6	6	5	6
	Asian American	7	7	9	9	7	8	6	7	9	10
	American Indian	2	3	3	1	0	0	0	0	0	0
	International	0	2	2	1	1	1	0	0	0	0
	<b>Total Associate Professors</b>	<b>149</b>	<b>152</b>	<b>146</b>	<b>138</b>	<b>140</b>	<b>137</b>	<b>133</b>	<b>139</b>	<b>137</b>	<b>138</b>
	<b>Minority %</b>	<b>9%</b>	<b>11%</b>	<b>14%</b>	<b>13%</b>	<b>11%</b>	<b>14%</b>	<b>14%</b>	<b>14%</b>	<b>15%</b>	<b>18%</b>
<b>Professors</b>											
	White/Other	119	121	120	120	123	126	126	127	131	132
	African American	3	3	3	3	3	2	3	2	2	2
	Hispanic	0	0	0	0	0	0	2	2	2	2
	Asian American	2	3	3	2	3	5	5	6	4	4
	American Indian	0	0	0	1	1	1	1	1	1	1
	International	0	0	0	0	0	0	0	0	0	0
	<b>Total Professors</b>	<b>124</b>	<b>127</b>	<b>126</b>	<b>126</b>	<b>130</b>	<b>134</b>	<b>137</b>	<b>138</b>	<b>140</b>	<b>141</b>
	<b>Minority %</b>	<b>4%</b>	<b>5%</b>	<b>5%</b>	<b>5%</b>	<b>5%</b>	<b>6%</b>	<b>8%</b>	<b>8%</b>	<b>6%</b>	<b>6%</b>
<b>Summary</b>											
	White/Other	313	317	308	296	301	302	296	299	294	299
	African American	10	14	13	14	13	13	14	15	15	14
	Hispanic	6	6	7	7	7	7	9	10	10	10
	Asian American	15	14	12	13	11	19	17	20	19	22
	American Indian	2	3	4	3	2	2	2	1	1	1
	International	4	6	9	9	11	9	10	9	11	12
	<b>Total</b>	<b>350</b>	<b>360</b>	<b>353</b>	<b>342</b>	<b>345</b>	<b>352</b>	<b>348</b>	<b>354</b>	<b>350</b>	<b>358</b>
	Majority	313	317	308	296	301	302	296	299	294	299
	Minority	37	43	45	46	44	50	52	55	56	59
	<b>Total</b>	<b>350</b>	<b>360</b>	<b>353</b>	<b>342</b>	<b>345</b>	<b>352</b>	<b>348</b>	<b>354</b>	<b>350</b>	<b>358</b>
	<b>Majority %</b>	<b>89%</b>	<b>88%</b>	<b>87%</b>	<b>87%</b>	<b>87%</b>	<b>86%</b>	<b>85%</b>	<b>84%</b>	<b>84%</b>	<b>84%</b>
	<b>Minority %</b>	<b>11%</b>	<b>12%</b>	<b>13%</b>	<b>13%</b>	<b>13%</b>	<b>14%</b>	<b>15%</b>	<b>16%</b>	<b>16%</b>	<b>16%</b>

Source: DSS Employee Workforce Data & Affirmative Action Office



# Faculty and Staff Headcount by Gender

(for Fall Semester in Academic Years)

Data Digest 2006-07

College of Liberal Arts

Classification	Gender	1997	1998	1999	2000	2001	2002	2003	2004	2005	2006
Tenured and Tenure Track Faculty	Female	119	125	124	122	127	126	126	130	132	137
	Male	233	240	229	221	220	226	222	225	219	221
Non-Tenure Track Faculty, Lecturers & Post Docs	Female	82	78	87	90	95	93	84	87	110	108
	Male	43	44	41	35	35	39	45	37	46	48
Administrative/Professional	Female	70	73	76	75	78	82	87	85	77	76
	Male	26	20	23	25	25	25	27	29	29	27
Clerical	Female	91	92	94	94	86	91	84	84	80	80
	Male	-	-	-	-	-	1	-	-	-	-
Service	Female	11	8	9	9	12	9	7	11	12	19
	Male	14	13	11	11	11	10	12	11	13	9
Graduate Student Staff	Female	385	395	393	431	465	493	484	488	473	469
	Male	285	307	334	317	283	294	289	307	304	319
<b>Summary</b>	<b>Female</b>	758	771	783	821	863	894	872	885	884	889
	<b>Male</b>	601	624	638	609	574	595	595	609	611	624
		<b>56%</b>	<b>55%</b>	<b>55%</b>	<b>57%</b>	<b>60%</b>	<b>60%</b>	<b>59%</b>	<b>59%</b>	<b>59%</b>	<b>59%</b>
		<b>44%</b>	<b>45%</b>	<b>45%</b>	<b>43%</b>	<b>40%</b>	<b>40%</b>	<b>41%</b>	<b>41%</b>	<b>41%</b>	<b>41%</b>
<b>Grand Total</b>		<b>1,359</b>	<b>1,395</b>	<b>1,421</b>	<b>1,430</b>	<b>1,437</b>	<b>1,489</b>	<b>1,467</b>	<b>1,494</b>	<b>1,495</b>	<b>1,513</b>

Source: DSS Employee Workforce Data

*Faculty and Staff Headcount by Classification and Race/Ethnicity*  
 (for Fall Semester in Academic Years, revised for consistency with University Data Digest)

<b>Classification</b>	<b>Race/Ethnicity</b>	<b>1997</b>	<b>1998</b>	<b>1999</b>	<b>2000</b>	<b>2001</b>	<b>2002</b>	<b>2003</b>	<b>2004</b>	<b>2005</b>	<b>2006</b>
Tenured and Tenure Track Faculty	White/Other	314	321	308	296	302	302	296	300	295	299
	African American	10	14	13	15	13	13	14	15	15	14
	Hispanic	6	6	7	7	7	7	9	10	10	10
	Asian American	15	14	12	13	12	19	17	20	19	22
	American Indian	2	3	4	3	2	2	2	1	1	1
	International	5	7	9	9	11	9	10	9	11	12
	<b>Subtotal</b>	<b>352</b>	<b>365</b>	<b>353</b>	<b>343</b>	<b>347</b>	<b>352</b>	<b>348</b>	<b>355</b>	<b>351</b>	<b>358</b>
Non-Tenure Track Faculty, Lecturers & Post Docs	White/Other	102	95	98	96	95	98	100	96	116	118
	African American	2	1	1	0	2	3	2	1	3	3
	Hispanic	6	7	6	8	6	9	10	10	10	13
	Asian American	3	4	4	4	8	6	5	5	8	9
	American Indian	0	0	0	0	0	0	0	0	1	1
	International	12	15	19	17	19	16	12	12	18	12
	<b>Subtotal</b>	<b>125</b>	<b>122</b>	<b>128</b>	<b>125</b>	<b>130</b>	<b>132</b>	<b>129</b>	<b>124</b>	<b>156</b>	<b>156</b>
A/P	White/Other	87	84	89	94	95	98	101	103	98	96
	African American	2	2	2	2	2	3	4	4	1	2
	Hispanic	3	2	3	2	1	2	2	2	1	1
	Asian American	4	5	5	2	2	2	3	3	2	1
	American Indian	0	0	0	0	1	0	0	0	1	1
	International	0	0	0	0	2	2	4	2	3	2
	<b>Subtotal</b>	<b>96</b>	<b>93</b>	<b>99</b>	<b>100</b>	<b>103</b>	<b>107</b>	<b>114</b>	<b>114</b>	<b>106</b>	<b>103</b>
Clerical	White/Other	86	86	87	86	79	87	79	79	74	73
	African American	2	2	2	2	1	1	1	1	1	1
	Hispanic	2	2	2	2	1	0	0	0	1	2
	Asian American	1	2	3	4	4	3	3	3	3	3
	American Indian	0	0	0	0	1	1	1	1	1	1
	International	0	0	0	0	0	0	0	0	0	0
	<b>Subtotal</b>	<b>91</b>	<b>92</b>	<b>94</b>	<b>94</b>	<b>86</b>	<b>92</b>	<b>84</b>	<b>84</b>	<b>80</b>	<b>80</b>
Service	White/Other	21	18	18	18	20	17	16	20	23	25
	African American	0	0	0	0	0	0	0	0	0	0
	Hispanic	1	1	0	0	0	0	0	0	0	0
	Asian American	1	1	1	1	1	1	2	2	2	3
	American Indian	1	1	1	1	1	1	1	0	0	0
	International	1	0	0	0	1	0	0	0	0	0
	<b>Subtotal</b>	<b>25</b>	<b>21</b>	<b>20</b>	<b>20</b>	<b>23</b>	<b>19</b>	<b>19</b>	<b>22</b>	<b>25</b>	<b>28</b>
Graduate Students	White/Other	452	448	460	460	461	485	482	479	479	501
	African American	28	26	28	24	24	28	28	29	30	40
	Hispanic	21	27	23	21	25	24	17	19	20	17
	Asian American	14	19	20	17	13	15	11	13	14	15
	American Indian	5	5	4	4	3	4	2	2	2	1
	International	150	177	192	222	222	231	233	253	232	214
	<b>Subtotal</b>	<b>670</b>	<b>702</b>	<b>727</b>	<b>748</b>	<b>748</b>	<b>787</b>	<b>773</b>	<b>795</b>	<b>777</b>	<b>788</b>
<b>Grand Total</b>	<b>1,359</b>	<b>1,395</b>	<b>1,421</b>	<b>1,430</b>	<b>1,437</b>	<b>1,489</b>	<b>1,467</b>	<b>1,494</b>	<b>1,495</b>	<b>1,513</b>	
<b>Total Minority Staff</b>	<b>128</b>	<b>143</b>	<b>140</b>	<b>131</b>	<b>128</b>	<b>142</b>	<b>132</b>	<b>140</b>	<b>145</b>	<b>160</b>	
<b>Minority Staff as Percent of Total</b>	<b>10.7%</b>	<b>12.0%</b>	<b>11.7%</b>	<b>11.1%</b>	<b>10.8%</b>	<b>11.5%</b>	<b>10.9%</b>	<b>11.5%</b>	<b>11.8%</b>	<b>12.6%</b>	

Source: DSS Employee Workforce Data & Affirmative Action Office

<b>Searches/Hires/Resignations</b>	<b>1996-97</b>	<b>1997-98</b>	<b>1998-99</b>	<b>1999-00</b>	<b>2000-01</b>	<b>2001-02</b>	<b>2002-03</b>	<b>2003-04</b>	<b>2004-05</b>	<b>2005-06</b>
Searches Undertaken	24	29	14	23	27	21	17	23	23	23
Searches Completed	24*	27*	17*	24*	24*	24*	18*	21*	24*	29*
Number of Men Faculty Hired	14 (58%)	17 (63%)	6 (35%)	15 (63%)#	11 (46%)	15 (63%)#	8 (44%)	11 (52%)	13 (54%)	13 (45%)
Number of Women Faculty Hired	10 (42%)	10 (37%)	11 (65%)	9 (38%)#	13 (54%)	9 (38%)#	10 (56%)	10 (48%)	11 (46%)	16 (55%)
Minority Faculty Hired	3	6	4	8	4	6	5	6	6	6
Resignation/Retirements	27	12	26	28	27	15	20	14	21	18
Men Faculty	18 (67%)	5 (42%)	17 (65%)	19(68%)	16 (59%)	7 (47%)	13 (65%)	10 (71%)	12 (57%)	12 (67%)
Women Faculty	9 (33%)	7 (58%)	9 (35%)	9 (32%)	11 (41%)	8 (53%)	7 (35%)	4 (29%)	9 (43%)	6 (33%)

Figures include deans and department heads.

\* including a target of opportunity/bridge or spousal hire

+ most searches cancelled for budgetary reasons

# percentages do not total to 100 due to rounding

Source: Liberal Arts Dean's Office

	TO ASSOCIATE								
	MEN			WOMEN			UNDERREPRESENTED GROUPS		
	<u>Nominated</u>	<u>Promoted</u>	<u>Success Rate</u>	<u>Nominated</u>	<u>Promoted</u>	<u>Success Rate</u>	<u>Nominated</u>	<u>Promoted</u>	<u>Success Rate</u>
2001-02	4	4	100%	1	1	100%	2	2	100%
2002-03	5	5	100%	6	5	83%	1	1	100%
2003-04	5	2	40%	5	4	80%	2	2	100%
2004-05	6	5	83%	6	6	100%	2	2	100%
2005-06	4	4	100%	5	5	100%	5	5	100%
<b>Total</b>	24	20	83%	23	21	91%	12	12	100%

	TO PROFESSOR								
	MEN			WOMEN			UNDERREPRESENTED GROUPS		
	<u>Nominated</u>	<u>Promoted</u>	<u>Success Rate</u>	<u>Nominated</u>	<u>Promoted</u>	<u>Success Rate</u>	<u>Nominated</u>	<u>Promoted</u>	<u>Success Rate</u>
2001-02	2	2	100%	4	3	75%	0	0	-
2002-03	8	7	88%	4	2	50%	1	1	100%
2003-04	2	2	100%	3	2	67%	0	0	-
2004-05	5	5	100%	1	1	100%	0	0	-
2005-06	4	3	75%	1	1	100%	1	0	0%
<b>Total</b>	21	19	90%	13	9	69%	2	1	50%

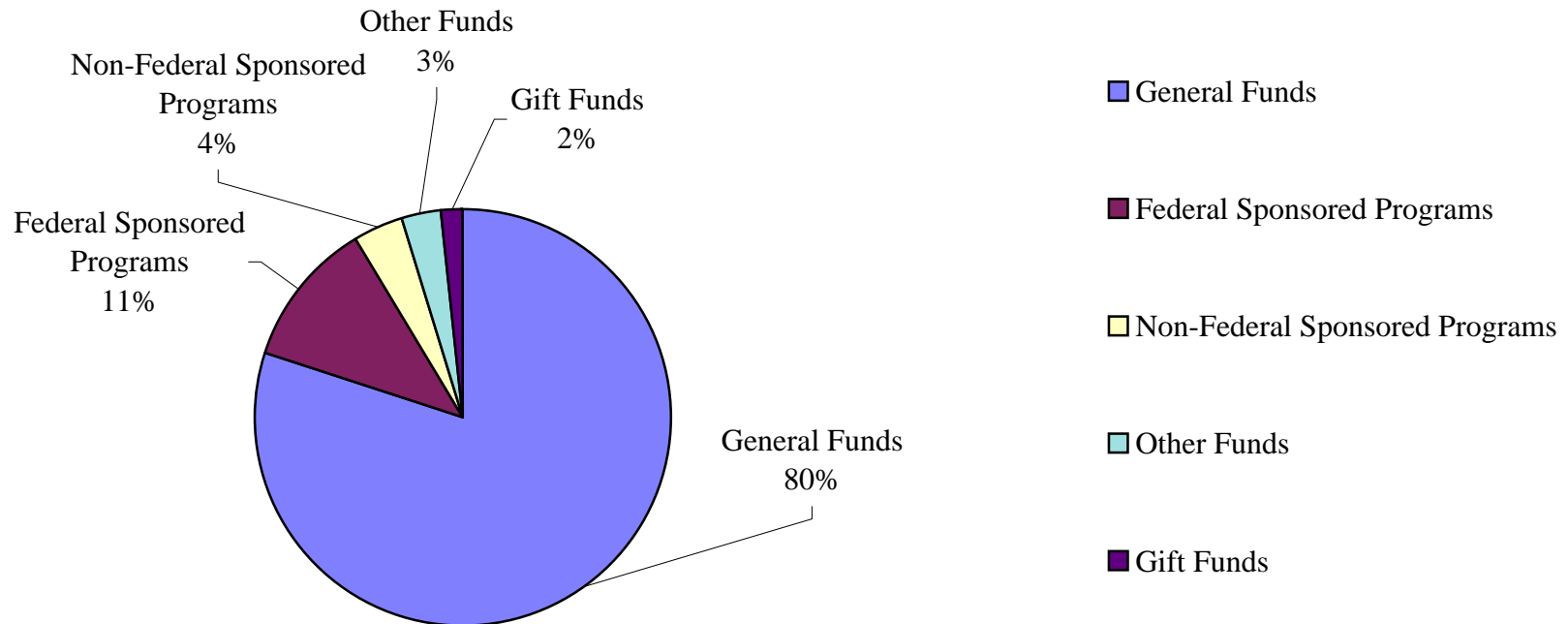
	COMBINED RANK								
	MEN			WOMEN			UNDERREPRESENTED GROUPS		
	<u>Nominated</u>	<u>Promoted</u>	<u>Success Rate</u>	<u>Nominated</u>	<u>Promoted</u>	<u>Success Rate</u>	<u>Nominated</u>	<u>Promoted</u>	<u>Success Rate</u>
2001-02	6	6	100%	5	4	80%	2	2	100%
2002-03	13	12	92%	10	7	70%	2	2	100%
2003-04	7	4	57%	8	6	75%	2	2	100%
2004-05	11	10	91%	7	7	100%	2	2	100%
2005-06	8	7	88%	6	6	100%	6	5	83%
<b>Total</b>	45	39	87%	36	30	83%	14	13	93%

Source: Liberal Arts Dean's Office



Source	2000-01	2001-02	2002-03	2003-04	2004-05	2005-06
<b>General Funds</b>	\$38,281,274	\$39,703,435	\$41,492,091	\$43,001,862	\$45,689,778	\$48,489,619
<b>Federal Sponsored Programs</b>	\$4,609,853	\$5,403,360	\$6,521,506	\$6,981,549	\$8,122,749	\$6,811,765
<b>Non-Federal Sponsored Programs</b>	\$1,921,340	\$2,015,378	\$2,666,096	\$2,655,745	\$2,361,412	\$2,395,260
<b>Other Funds</b>	\$1,479,275	\$1,709,845	\$1,863,227	\$2,013,498	\$2,135,775	\$1,898,915
<b>Gift Funds</b>	\$521,168	\$854,087	\$1,277,915	\$478,958	\$640,242	\$971,047
<b>Total</b>	<b>\$46,812,910</b>	<b>\$49,686,105</b>	<b>\$53,820,835</b>	<b>\$55,131,612</b>	<b>\$58,949,956</b>	<b>\$60,566,606</b>

2005-06 Expenditures



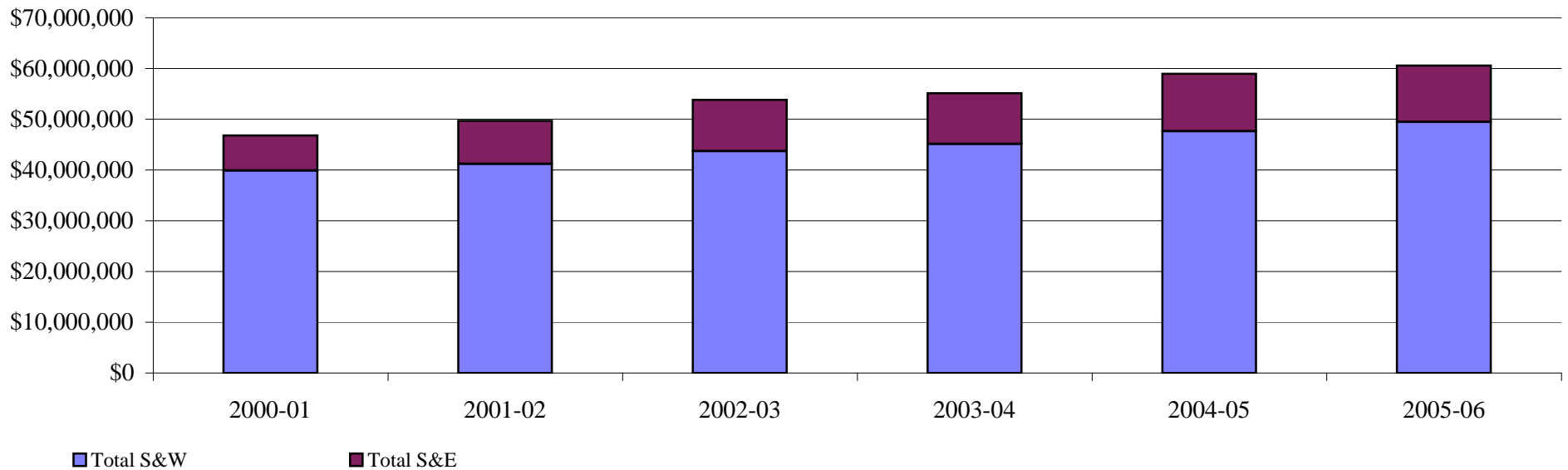
Source: DSS Transaction Summary Data

# Total Annual Expenditures by Category

Data Digest 2006-07

College of Liberal Arts

Category	Source	2000-01	2001-02	2002-03	2003-04	2004-05	2005-06
<b>S&amp;W</b>	General Funds	\$35,783,849	\$37,022,516	\$38,870,188	\$40,015,048	\$42,206,064	\$44,392,109
	Federal Sponsored Programs	\$2,387,676	\$2,637,061	\$3,039,154	\$3,405,168	\$3,775,872	\$3,389,367
	Non-Federal Sponsored Programs	\$1,113,740	\$998,681	\$1,228,238	\$1,074,096	\$1,069,892	\$923,690
	Gift Funds	\$152,819	\$171,311	\$153,913	\$120,996	\$141,963	\$203,499
	Other Funds	\$440,395	\$360,318	\$442,145	\$490,534	\$448,616	\$581,608
	<b>Total S&amp;W</b>	<b>\$39,878,479</b>	<b>\$41,189,887</b>	<b>\$43,733,639</b>	<b>\$45,105,842</b>	<b>\$47,642,407</b>	<b>\$49,490,273</b>
<b>S&amp;E</b>	General Funds	\$2,497,425	\$2,680,919	2,621,903	\$2,986,814	\$3,483,714	\$4,097,510
	Federal Sponsored Programs	\$2,222,179	\$2,766,299	\$3,482,351	\$3,576,381	\$4,346,877	\$3,422,398
	Non-Federal Sponsored Programs	\$807,600	\$1,016,696	\$1,437,857	\$1,583,198	\$1,291,520	\$1,471,570
	Gift Funds	\$368,350	\$682,776	\$1,124,002	\$357,512	\$498,279	\$767,548
	Other Funds	\$1,038,880	\$1,349,528	\$1,421,082	\$1,522,964	\$1,687,159	\$1,317,307
	<b>Total S&amp;E</b>	<b>\$6,934,433</b>	<b>\$8,496,218</b>	<b>\$10,087,194</b>	<b>\$10,026,869</b>	<b>\$11,307,549</b>	<b>\$11,076,333</b>
<b>Total</b>		<b>\$46,812,912</b>	<b>\$49,686,105</b>	<b>\$53,820,833</b>	<b>\$55,132,711</b>	<b>\$58,949,956</b>	<b>\$60,566,606</b>



Source: DSS Transaction Summary Data

*Total General Fund Expenditures*

**Data Digest 2006-07**

*College of Liberal Arts*

<b>Category</b>	<b>Type</b>	<b>2000-01</b>	<b>2001-02</b>	<b>2002-03</b>	<b>2003-04</b>	<b>2004-05</b>	<b>2005-06</b>
<b>S&amp;W</b>	Faculty	\$20,309,903	\$20,813,651	\$21,978,790	\$22,891,369	\$24,218,800	\$25,827,266
	Visiting Faculty/Lecturer/etc.	\$1,947,099	\$2,138,952	\$2,142,030	\$2,120,352	\$2,342,602	\$2,965,253
	Post Doctoral	\$1,755					
	A/P	\$3,509,346	\$3,653,318	\$3,806,890	\$4,034,432	\$4,178,987	\$4,022,047
	Clerical	\$1,796,404	\$1,840,398	\$1,864,765	\$1,837,271	\$1,973,625	\$1,900,719
	Service	\$349,487	\$368,600	\$333,221	\$344,050	\$344,553	\$347,348
	Graduate Students	\$7,731,082	\$8,052,053	\$8,586,539	\$8,605,382	\$8,942,117	\$9,139,924
	Students	\$138,773	\$155,545	\$157,953	\$182,192	\$205,379	\$189,552
	<b>Total S&amp;W</b>		<b>\$35,783,849</b>	<b>\$37,022,516</b>	<b>\$38,870,188</b>	<b>\$40,015,048</b>	<b>\$42,206,064</b>
<b>S&amp;E</b>	Equipment	\$1,067,368	\$1,124,160	\$726,103	\$896,379	\$887,509	\$1,434,824
	Maintenance	\$59,168	\$70,698	\$123,333	\$128,593	\$134,090	\$106,442
	Postage & Shipping	\$86,252	\$65,408	\$65,758	\$88,382	\$87,572	\$72,211
	Printing & Office Supplies	\$371,072	\$379,696	\$416,665	\$488,393	\$544,589	\$536,629
	Rental & Maintenance	\$96,919	\$51,788	\$41,879	\$95,464	\$82,755	\$73,827
	Scholarships & Awards	\$23,621	\$4,687	\$36,010	\$4,382	\$35,638	\$51,351
	Services & Fees	\$140,832	\$237,164	\$340,271	\$246,181	\$293,488	\$361,109
	Supplies	\$36,361	\$80,124	\$100,161	\$56,972	\$89,079	\$223,393
	Telephone & Tolls	\$320,893	\$327,910	\$336,027	\$356,592	\$376,214	\$414,005
	Travel	\$294,938	\$339,284	\$435,696	\$625,476	\$952,780	\$823,719
	<b>Total S&amp;E</b>		<b>\$2,497,424</b>	<b>\$2,680,919</b>	<b>\$2,621,903</b>	<b>\$2,986,814</b>	<b>\$3,483,714</b>
<b>Total</b>		<b>\$38,281,273</b>	<b>\$39,703,435</b>	<b>\$41,492,091</b>	<b>\$43,001,862</b>	<b>\$45,689,778</b>	<b>\$48,489,619</b>

Source: DSS Transaction Summary Data



# Total Gift Fund Expenditures

Data Digest 2006-07

College of Liberal Arts

Category	Type	2000-01	2001-02	2002-03	2003-04	2004-05	2005-06
<b>S&amp;W</b>	Faculty	\$73,282	\$79,783	\$38,772	\$30,489	\$32,056	\$66,715
	Visiting Faculty	\$563				\$2,635	\$10,000
	A/P	\$18,282	\$16,573	\$16,904	\$26,602	\$34,249	\$21,856
	Clerical	\$6,898	\$5,824	\$5,991	\$7,096	\$5,009	\$5,233
	Service & Other	\$9,680	\$15,486	\$15,606	\$4,614	\$14,987	\$18,200
	Graduate Students	\$5,882	\$18,735	\$45,647	\$27,577	\$22,540	\$19,537
	Students	\$8,137	\$1,080	\$910	\$684	\$4,560	\$25,828
	Fringe Benefits	\$30,096	\$33,831	\$30,085	\$23,934	\$25,927	\$36,130
<b>Total S&amp;W</b>		<b>\$152,820</b>	<b>\$171,311</b>	<b>\$153,913</b>	<b>\$120,996</b>	<b>\$141,963</b>	<b>\$203,499</b>
<b>S&amp;E</b>	Equipment	\$44,430	\$26,391	\$17,623	\$34,137	\$194,858	\$35,347
	Maintenance	\$4,488	\$12,552	\$4,732	\$12,677	\$3,219	\$2,765
	Postage & Shipping	\$15,138	\$23,627	\$24,952	\$5,756	\$7,024	\$10,654
	Printing & Office Supplies	\$82,198	\$153,072	\$86,927	\$33,776	\$35,241	\$49,430
	Rental & Maintenance	\$1,422	\$1,668	\$2,905	\$5,277	\$2,406	\$4,868
	Scholarships & Awards	\$8,975	\$5,494	-\$1,600	\$26,589	\$30,468	\$11,173
	Services & Fees	\$39,017	\$30,177	\$28,471	\$48,579	\$42,142	\$70,670
	Supplies	\$11,629	\$5,869	\$5,612	\$5,162	\$11,617	\$25,519
	Telephone & Tolls	\$2,809	\$2,722	\$4,374	\$4,396	\$5,360	\$7,311
	Travel	\$50,266	\$32,354	\$54,412	\$79,344	\$83,063	\$106,280
	Other S&E	\$107,978	\$388,847	\$895,594	\$101,819	\$82,881	\$443,531
	<b>Total S&amp;E</b>		<b>\$368,350</b>	<b>\$682,776</b>	<b>\$1,124,002</b>	<b>\$357,512</b>	<b>\$498,279</b>
<b>Total</b>		<b>\$521,170</b>	<b>\$854,087</b>	<b>\$1,277,915</b>	<b>\$478,508</b>	<b>\$640,242</b>	<b>\$971,047</b>

Note: Fund 707 is excluded from data

Source: DSS Transaction Summary Data

# Total Sponsored Program Expenditures

Data Digest 2006-07

College of Liberal Arts

Category	Type	2000-01	2001-02	2002-03	2003-04	2004-05	2005-06
<b>S&amp;W</b>	Faculty	\$1,169,850	\$1,146,659	\$1,405,000	\$1,369,454	\$1,495,475	\$1,425,745
	Visiting Faculty/Lecturer/etc.	\$14,774	\$9,939	\$18,600	\$11,246	\$18,850	
	Post Doctoral	\$26,260	\$19,578	\$9,800	\$24,470	\$16,396	\$17,107
	A/P	\$180,305	\$233,499	\$294,246	\$500,472	\$492,801	\$398,796
	Clerical	\$801	\$2,723	\$16,028	\$10,451	\$2,460	\$2,023
	Service	\$113,354	\$112,600	\$136,042	\$174,203	\$175,409	\$177,097
	Graduate Students	\$1,289,172	\$1,369,720	\$1,389,595	\$1,345,209	\$1,454,125	\$1,285,742
	Students	\$111,035	\$95,844	\$188,785	\$160,510	\$193,258	\$151,524
	Fringe Benefits	\$595,863	\$645,180	\$807,937	\$879,449	\$993,134	\$855,023
	Instructor			\$1,360	\$3,800	\$3,856	\$0
<b>Total S&amp;W</b>		<b>\$3,501,416</b>	<b>\$3,635,742</b>	<b>\$4,267,393</b>	<b>\$4,479,264</b>	<b>\$4,845,764</b>	<b>\$4,313,057</b>
<b>S&amp;E</b>	Equipment	\$211,559	\$347,502	\$308,293	\$264,185	\$370,471	\$328,830
	Maintenance	\$7,402	\$10,350	\$5,232	\$15,086	\$7,387	\$5,391
	Postage & Shipping	\$10,386	\$9,113	\$13,129	\$55,009	\$26,316	\$10,510
	Printing & Office Supplies	\$47,048	\$56,426	\$57,342	\$113,560	\$63,803	\$31,057
	Rental & Maintenance	\$21,940	\$744	\$14,553	\$18,413	\$22,624	\$22,468
	Scholarships & Awards	\$683,871	\$905,967	\$967,159	\$1,316,246	\$1,184,587	\$1,245,140
	Services & Fees	\$467,417	\$795,363	\$1,542,535	\$1,159,856	\$1,444,783	\$883,010
	Supplies	\$139,167	\$141,916	\$184,821	\$171,650	\$190,620	\$254,823
	Telephone & Tolls	\$6,279	\$6,398	\$6,777	\$5,018	\$7,582	\$6,122
	Travel	\$180,843	\$139,653	\$226,118	\$296,016	\$380,863	\$239,151
	Other S&E	\$1,455	\$18,407	\$72,921	\$26,957	\$37,296	\$49,501
	F&A	\$1,252,411	\$1,351,157	\$1,521,326	\$1,717,581	\$1,902,066	\$1,817,965
<b>Total S&amp;E</b>		<b>\$3,029,777</b>	<b>\$3,782,996</b>	<b>\$4,920,206</b>	<b>\$5,159,577</b>	<b>\$5,638,398</b>	<b>\$4,893,968</b>
<b>Total</b>		<b>\$6,531,193</b>	<b>\$7,418,738</b>	<b>\$9,187,599</b>	<b>\$9,638,841</b>	<b>\$10,484,162</b>	<b>\$9,207,025</b>

Source: DSS Transaction Summary Data

*Expenditures by Type & Source*

**Data Digest 2006-07**

*College of Liberal Arts*

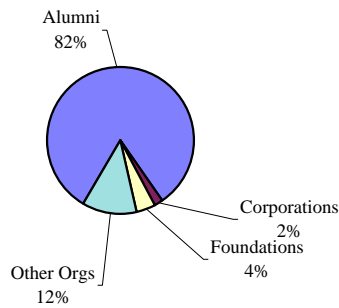
<b>Category</b>	<b>Type</b>	<b>General Funds</b>	<b>Federal Sponsored Programs</b>	<b>Non-Federal Sponsored Programs</b>	<b>Gift Funds</b>	<b>Other Funds</b>	<b>Total 2005-06</b>
<b>S&amp;W</b>	Faculty	\$25,827,266	\$1,325,152	\$100,593	\$66,715	\$132,818	\$27,452,544
	Visiting Faculty	\$2,965,253	\$0	\$0	\$10,000	\$3,838	\$2,979,091
	Post Doctoral	\$0	\$17,107	\$0	\$0	\$0	\$17,107
	A/P	\$4,022,047	\$387,669	\$11,127	\$21,856	\$45,480	\$4,488,179
	Clerical	\$1,900,719	\$0	\$2,023	\$5,233	\$55,656	\$1,963,631
	Service	\$347,348	\$159,162	\$17,935	\$18,200	\$11,566	\$554,211
	Graduate Students	\$9,139,924	\$619,833	\$665,909	\$19,537	\$29,027	\$10,474,230
	Instructor	\$0	\$0	\$0	\$0	\$0	\$0
	Students	\$189,552	\$110,462	\$41,062	\$25,828	\$244,290	\$611,194
	Fringe Benefits	\$0	\$769,982	\$85,041	\$36,130	\$58,933	\$950,086
<b>Total S&amp;W</b>		<b>\$44,392,109</b>	<b>\$3,389,367</b>	<b>\$923,690</b>	<b>\$203,499</b>	<b>\$581,608</b>	<b>\$49,490,273</b>
<b>S&amp;E</b>	Equipment	\$1,434,824	\$308,216	\$20,614	\$35,347	\$61,935	\$1,860,936
	Maintenance	\$106,442	\$5,158	\$233	\$2,765	\$17,002	\$131,600
	Postage & Shipping	\$72,211	\$4,947	\$5,563	\$10,654	\$7,419	\$100,794
	Printing & Office Supplies	\$536,629	\$16,140	\$14,917	\$49,430	\$55,572	\$672,688
	Rental & Maintenance	\$73,827	\$22,352	\$116	\$4,868	\$17,452	\$118,615
	Scholarships & Awards	\$51,351	\$192,350	\$1,052,790	\$11,173	\$170,720	\$1,478,384
	Services & Fees	\$361,109	\$749,080	\$133,930	\$70,670	\$259,214	\$1,574,003
	Supplies	\$223,393	\$161,119	\$93,704	\$25,519	\$176,815	\$680,550
	Telephone & Tolls	\$414,005	\$3,758	\$2,364	\$7,311	\$31,535	\$458,973
	Travel	\$823,719	\$186,600	\$52,551	\$106,280	\$196,866	\$1,366,016
	Other S & E	\$0	\$12,712	\$36,789	\$443,531	\$322,777	\$815,809
	F&A	\$0	\$1,759,966	\$57,999	\$0	\$0	\$1,817,965
	<b>Total S&amp;E</b>		<b>\$4,097,510</b>	<b>\$3,422,398</b>	<b>\$1,471,570</b>	<b>\$767,548</b>	<b>\$1,317,307</b>
<b>Total</b>		<b>\$48,489,619</b>	<b>\$6,811,765</b>	<b>\$2,395,260</b>	<b>\$971,047</b>	<b>\$1,898,915</b>	<b>\$60,566,606</b>

Source: DSS Transaction Summary Data

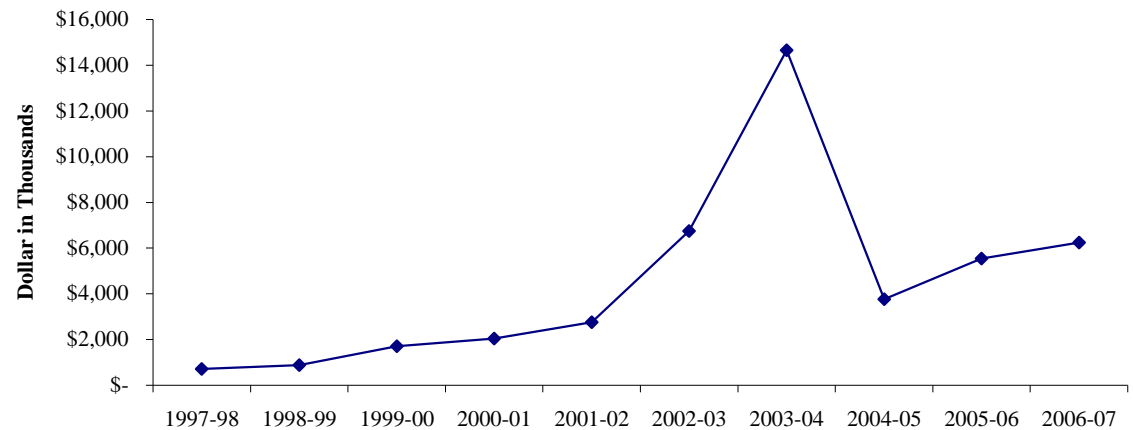
Gift Category	1997-98	1998-99	1999-00	2000-01	2001-02	2002-03	2003-04	2004-05	2005-06	2006-07
Cash/Securities	\$ 620,255	\$ 647,177	\$ 903,392	\$ 1,573,028	\$ 1,435,361	\$ 6,009,492	\$ 2,251,133	\$ 3,085,543	\$ 3,098,494	\$ 2,650,065
Real Estate	\$ -	\$ -	\$ -	\$ -	\$ -	\$ -	\$ 2,548,509	\$ -	\$ -	\$ -
Gifts-in-Kind	\$ 87,092	\$ 36,661	\$ 78,944	\$ 80,389	\$ 100,225	\$ 11,155	\$ 55,824	\$ 502,367	\$ 333,986	\$ 45,100
Irrevocable Deferred	\$ 0	\$ 200,000	\$ 342,909	\$ 17,545	\$ 67,924	\$ 470,798	\$ 5,000,000	\$ 53,150	\$ 52,861	\$ 3,833,240
Pledge Balances			\$ 379,705	\$ 367,904	\$ 1,272,017	\$ 451,188	\$ 4,928,675	\$ 2,248,069	\$ 3,370,645	\$ 392,861
Less: Prior Year										
Pledge Payments					\$ (119,413)	\$ (198,530)	\$ (122,707)	\$ (2,125,579)	\$ (1,311,364)	\$ (685,013)
<b>Total</b>	<b>\$ 707,347</b>	<b>\$ 883,838</b>	<b>\$ 1,704,950</b>	<b>\$ 2,038,866</b>	<b>\$ 2,756,114</b>	<b>\$ 6,744,102</b>	<b>\$ 14,661,434</b>	<b>\$ 3,763,550</b>	<b>\$ 5,544,622</b>	<b>\$ 6,236,253</b>

FY2001-02 thru Present: Campaign for Purdue counting periods; payments on pledges made in prior years of The Campaign for Purdue were deducted from total production to accurately reflect fund-raising totals during the campaigns.

**Gift Income Distribution by Source for Fiscal Year 2006-2007**  
**Total - \$6,236,253**

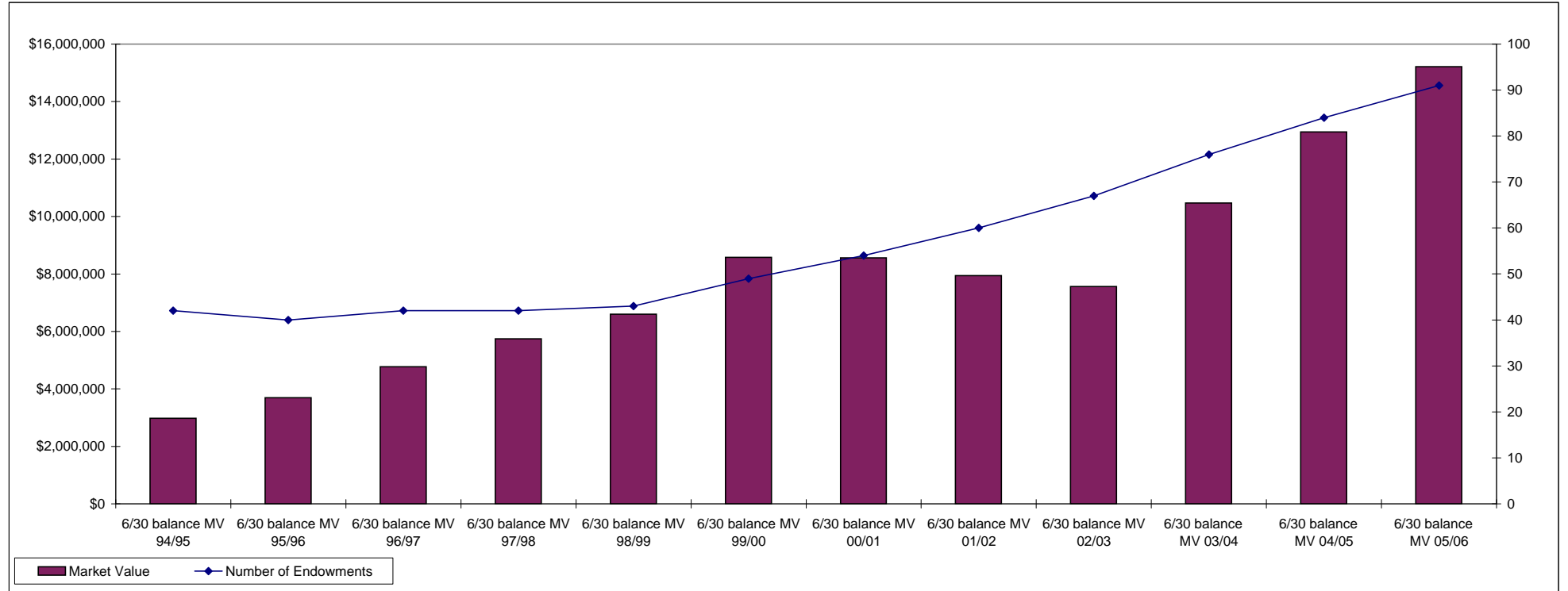


**Trend in Giving 1997-98 through 2006-07**



Source: University Development Office

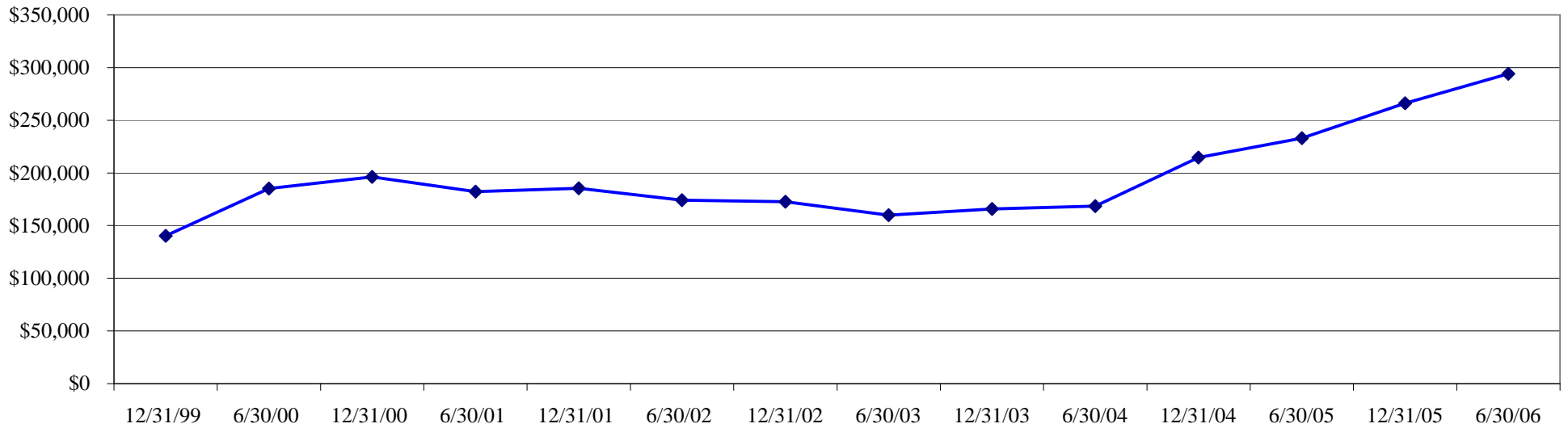
Endowments & CYP Investments	6/30 balance MV 94/95	6/30 balance MV 95/96	6/30 balance MV 96/97	6/30 balance MV 97/98	6/30 balance MV 98/99	6/30 balance MV 99/00	6/30 balance MV 00/01	6/30 balance MV 01/02	6/30 balance MV 02/03	6/30 balance MV 03/04	6/30 balance MV 04/05	6/30 balance MV 05/06
Market Value	\$2,978,087	\$3,693,098	\$4,769,472	\$5,741,134	\$6,600,470	\$8,577,946	\$8,562,575	\$7,946,005	\$7,558,333	\$10,465,338	\$12,943,230	\$15,211,979
Number of Endowments	42	40	42	42	43	49	54	60	67	76	84	91



Source: Semi-annual Endowment Reports

	99/00		00/01		01/02		02/03		03/04		04/05		05/06	
Endowments & CYP Investments	12/31/99	6/30/00	12/31/00	6/30/01	12/31/01	6/30/02	12/31/02	6/30/03	12/31/03	6/30/04	12/31/04	6/30/05	12/31/05	6/30/06
Payments	\$140,358	\$185,126	\$196,210	\$182,271	\$185,410	\$174,163	\$172,604	\$159,994	\$165,822	\$168,595	\$214,725	\$232,885	\$266,030	\$294,200

Income Payments  
(6 month period)



Source: Semi-annual Endowment Reports



*Research*

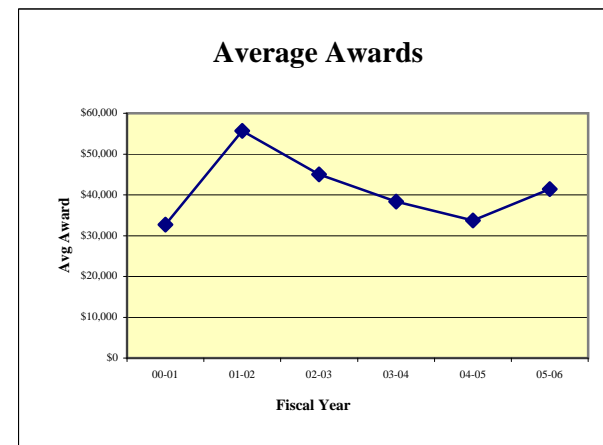
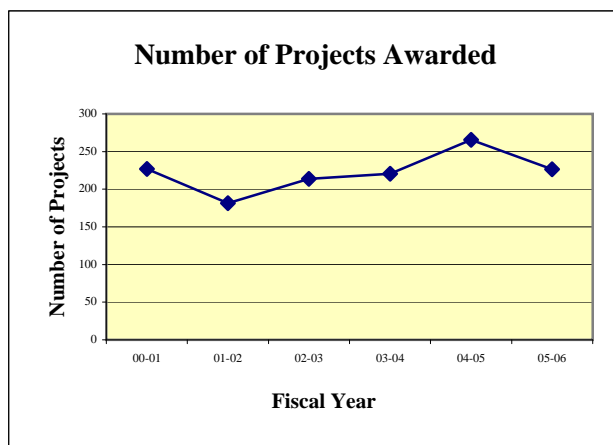
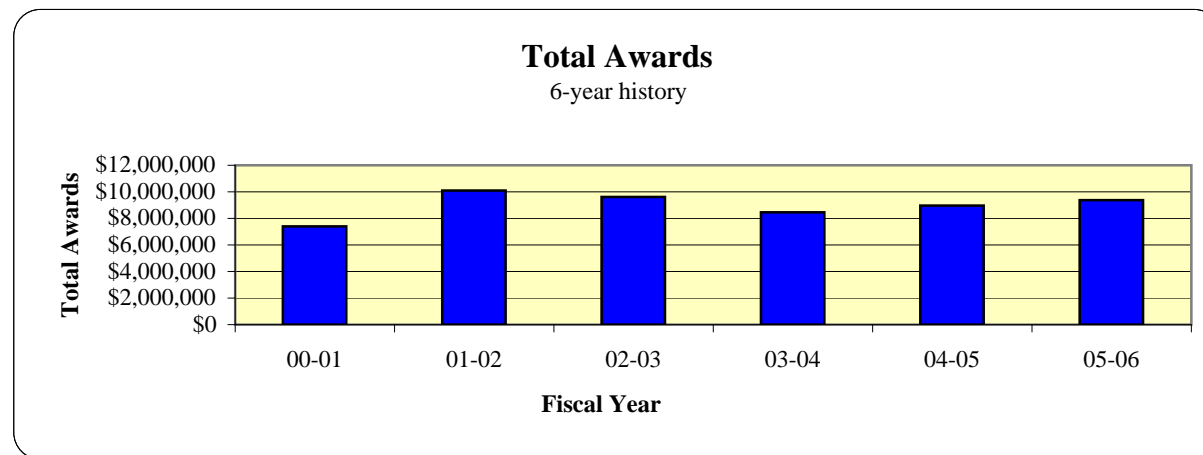
# Total Annual Sponsored Program Awards

Data Digest 2006-07

College of Liberal Arts

	00-01	01-02	02-03	03-04	04-05	05-06	Total
<b>Grant Projects -- 7-year history</b>							
<b>Total Awards</b>	\$7,409,350	\$10,096,812	\$9,621,313	\$8,456,283	\$8,964,772	\$9,383,616	\$53,932,146
<b>Number of Projects</b>	227	181	214	220	266	227	1,334
<b>Avg Award</b>	\$32,678	\$55,707	\$45,023	\$38,375	\$33,747	\$41,407	\$40,419

## Fiscal Year



Source: DSS Awards Data



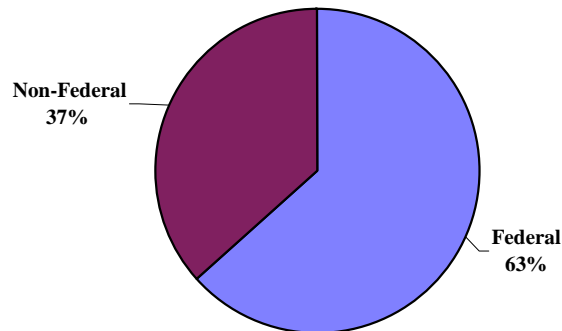
# Total External Awards by Sponsor

Data Digest 2006-07

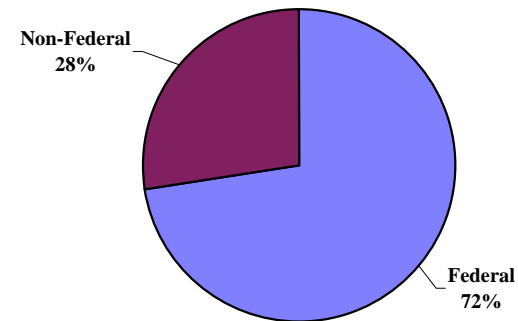
College of Liberal Arts

Sponsor	1996-97	1997-98	1998-99	1999-00	2000-01	2001-02	2002-03	2003-04	2004-05	2005-06
DHHS	\$2,694,113	\$2,428,173	\$2,127,056	\$3,100,891	\$3,499,622	\$5,559,209	\$5,504,768	\$5,617,424	\$5,158,981	\$5,093,953
NSF	\$383,595	\$422,241	\$214,266	\$179,923	\$610,554	\$1,169,615	\$495,700	\$505,505	\$863,043	\$954,323
DOEd				\$2,000	\$3,000	\$2,000	\$246,852	\$76,940		
DOD			\$12,000	\$823,627	\$821,016	\$842,355	\$864,449	\$130,602	\$266,803	\$659,874
Other Federal	\$130,477	\$328,529	\$174,965	\$275,262	\$761,477	\$217,150	\$209,407	\$18,579	\$172,338	\$90,941
<b>Total Federal</b>	<b>\$3,208,185</b>	<b>\$3,178,943</b>	<b>\$2,528,287</b>	<b>\$4,381,703</b>	<b>\$5,695,669</b>	<b>\$7,790,329</b>	<b>\$7,321,176</b>	<b>\$6,349,050</b>	<b>\$6,461,165</b>	<b>\$6,799,091</b>
Industrial	\$1,196,584	\$452,069	\$1,044,840	\$254,047	\$287,895	\$1,217,718	\$589,895	\$196,752	\$693,625	\$822,464
ST,LCL,FGN Govt's, & Misc.	\$670,242	\$1,314,948	\$994,660	\$1,581,678	\$1,425,786	\$1,088,765	\$1,710,242	\$1,910,481	\$1,809,982	\$1,762,061
<b>Total Non-Federal</b>	<b>\$1,866,826</b>	<b>\$1,767,017</b>	<b>\$2,039,500</b>	<b>\$1,835,725</b>	<b>\$1,713,681</b>	<b>\$2,306,483</b>	<b>\$2,300,137</b>	<b>\$2,107,233</b>	<b>\$2,503,607</b>	<b>\$2,584,525</b>
<b>Total Liberal Arts</b>	<b>\$5,075,011</b>	<b>\$4,945,960</b>	<b>\$4,567,787</b>	<b>\$6,217,428</b>	<b>\$7,409,350</b>	<b>\$10,096,812</b>	<b>\$9,621,313</b>	<b>\$8,456,283</b>	<b>\$8,964,772</b>	<b>\$9,383,616</b>

1996-97 External Awards



2005-06 External Awards



Source: DSS Awards Data

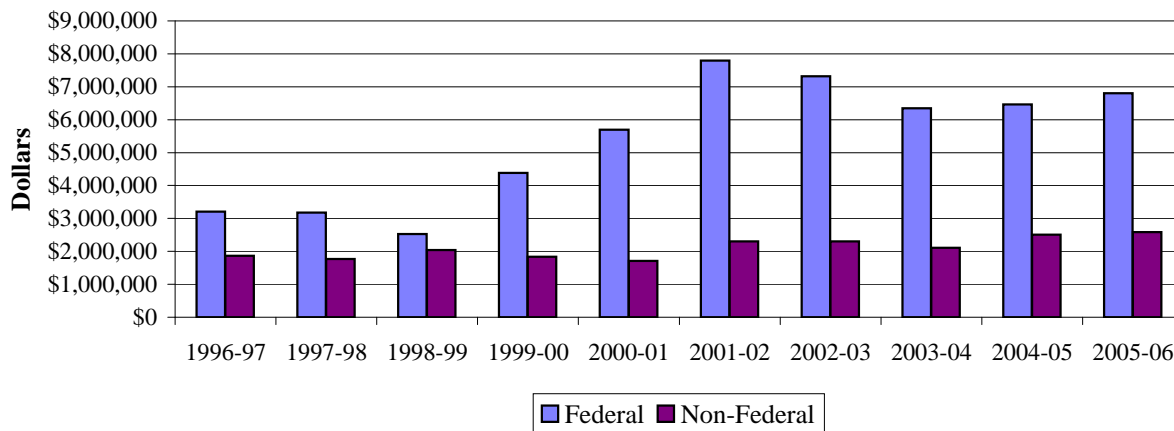
# Total External Awards by Program

Data Digest 2006-07

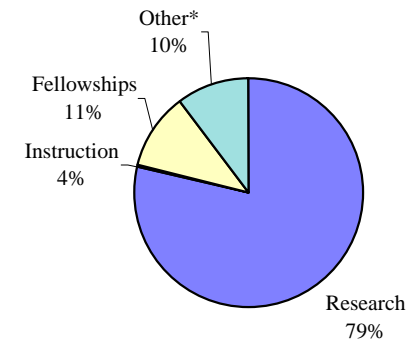
College of Liberal Arts

	1996-97	1997-98	1998-99	1999-00	2000-01	2001-02	2002-03	2003-04	2004-05	2005-06
<b>Awards by Program</b>										
Research	\$3,534,588	\$3,437,800	\$3,253,380	\$4,515,660	\$6,091,230	\$8,854,472	\$7,004,330	\$6,109,017	\$6,476,713	\$7,386,882
Instruction	\$326,786	\$461,258	\$212,345	\$564,130	\$163,133	\$475,018	\$245,200	\$472,580	\$361,336	\$6,450
Fellowships	\$156,993	\$774,124	\$415,091	\$948,073	\$736,570	\$520,577	\$1,257,572	\$1,071,315	\$1,115,979	\$1,030,681
Other*	\$1,056,644	\$272,778	\$686,971	\$189,565	\$418,417	\$246,745	\$1,114,211	\$803,371	\$1,010,744	\$959,603
<b>Total Awards</b>	<b>\$5,075,011</b>	<b>\$4,945,960</b>	<b>\$4,567,787</b>	<b>\$6,217,428</b>	<b>\$7,409,350</b>	<b>\$10,096,812</b>	<b>\$9,621,313</b>	<b>\$8,456,283</b>	<b>\$8,964,772</b>	<b>\$9,383,616</b>
<b>Awards by Source</b>										
Federal	\$3,208,185	\$3,178,943	\$2,528,287	\$4,381,703	\$5,695,669	\$7,790,329	\$7,321,176	\$6,349,050	\$6,461,165	\$6,799,091
Non-Federal	\$1,866,826	\$1,767,017	\$2,039,500	\$1,835,725	\$1,713,681	\$2,306,483	\$2,300,137	\$2,107,233	\$2,503,607	\$2,584,525
<b>Total Awards</b>	<b>\$5,075,011</b>	<b>\$4,945,960</b>	<b>\$4,567,787</b>	<b>\$6,217,428</b>	<b>\$7,409,350</b>	<b>\$10,096,812</b>	<b>\$9,621,313</b>	<b>\$8,456,283</b>	<b>\$8,964,772</b>	<b>\$9,383,616</b>

External Awards



2005-06 External Awards



\* Other includes: Service, Outreach, and Engagement

Source: DSS Awards Data

Dollar Amount of External Awards										
Department	1996-97	1997-98	1998-99	1999-00	2000-01	2001-02	2002-03	2003-04	2004-05	2005-06
Administration	\$84,163	\$60,000	\$3,650	\$20,000	\$26,775	\$27,742	\$14,160	\$32,014	\$102,804	\$29,039
American Studies	\$50,072	\$145,470	\$112,416	\$174,992	\$96,314	\$94,469	\$126,894	\$143,282	\$195,438	\$110,233
Communication	\$53,383	\$98,487	\$75,001	\$102,241	\$84,762	\$52,902	\$164,186	\$121,329	\$120,522	\$348,586
Comparative Literature	\$13,406	\$16,904	\$20,250	\$31,688	\$32,827	\$23,257	\$46,137	\$52,156	\$51,372	\$59,613
English	\$59,904	\$296,036	\$117,280	\$220,470	\$266,567	\$194,110	\$245,768	\$452,917	\$356,236	\$445,999
Foreign Languages and Literatures	\$66,836	\$155,276	\$176,683	\$122,117	\$71,412	\$200,665	\$100,043	\$161,701	\$272,671	\$114,479
Health and Kinesiology	\$152,396	\$175,378	\$156,760	\$204,851	\$273,277	\$315,318	\$576,870	\$534,603	\$737,483	\$563,826
History	\$63,948	\$122,445	\$56,150	\$238,796	\$147,343	\$153,593	\$188,946	\$225,808	\$118,581	\$140,983
Linguistics							\$80,865	\$104,457	\$89,305	\$96,331
Philosophy	\$478,788	\$143,184	\$84,330	\$115,627	\$103,362	\$110,014	\$122,317	\$164,050	\$108,938	\$160,215
Political Science	\$60,938	\$137,327	\$120,575	\$266,295	\$204,605	\$93,674	\$295,011	\$109,089	\$128,280	\$242,019
Psychological Sciences	\$1,729,204	\$1,913,093	\$1,983,669	\$2,380,410	\$3,763,095	\$4,271,516	\$4,377,312	\$3,085,418	\$3,697,586	\$3,562,489
Sociology and Anthropology	\$875,664	\$463,532	\$580,615	\$522,159	\$286,226	\$768,188	\$586,974	\$498,485	\$681,427	\$459,512
Speech, Language, and Hearing Sciences	\$1,371,837	\$1,212,335	\$1,045,117	\$1,782,565	\$1,964,222	\$3,747,931	\$2,686,619	\$2,749,162	\$2,294,783	\$3,037,992
Visual and Performing Arts	\$13,972	\$6,493	\$35,291	\$19,467	\$73,355	\$17,159	\$9,211	\$21,812	\$9,346	\$12,300
Women's Studies				\$15,750	\$15,208	\$26,274				
<b>Total</b>	<b>\$5,074,511</b>	<b>\$4,945,960</b>	<b>\$4,567,787</b>	<b>\$6,217,428</b>	<b>\$7,409,350</b>	<b>\$10,096,812</b>	<b>\$9,621,313</b>	<b>\$8,456,283</b>	<b>\$8,964,772</b>	<b>\$9,383,616</b>

Number of Projects*										
Department	1996-97	1997-98	1998-99	1999-00	2000-01	2001-02	2002-03	2003-04	2004-05	2005-06
Administration	3.00	1.00	3.00	1.00	0.20	0.16	0.05	6.00	5.10	3.00
American Studies	9.00	14.00	10.00	18.00	15.00	9.00	10.20	12.25	22.00	9.00
Communication	7.00	10.00	6.14	9.34	9.20	6.20	11.00	11.00	14.00	16.00
Comparative Literature	2.00	3.00	2.00	4.00	5.00	2.00	4.00	6.00	5.00	6.00
English	8.00	30.00	8.00	21.00	24.00	15.40	12.50	19.75	28.00	21.00
Foreign Languages and Literatures	9.00	6.70	7.83	12.40	9.33	5.40	7.00	9.20	13.40	10.66
Health and Kinesiology	7.00	10.50	14.02	21.15	17.25	15.75	25.25	23.67	15.70	27.10
History	9.00	11.75	6.00	15.00	16.00	11.00	11.00	15.00	12.00	9.00
							6.00	7.00	11.00	7.00
Philosophy	10.00	12.00	7.50	11.00	12.00	9.25	12.00	14.00	14.00	12.00
Political Science	9.00	10.00	12.20	19.38	16.00	8.00	8.00	4.49	9.10	12.50
Psychological Sciences	34.00	43.05	43.58	52.66	43.84	50.25	52.43	41.95	53.55	45.56
Sociology and Anthropology	18.00	20.00	14.00	26.75	23.82	19.44	23.87	17.22	27.00	12.00
Speech, Language, and Hearing Sciences	18.00	16.50	16.50	24.30	30.10	24.40	27.40	28.83	31.80	33.80
Visual and Performing Arts	5.00	3.00	6.00	3.00	4.00	3.00	3.00	4.00	4.00	2.00
Women's Studies				3.00	1.00	2.00				
<b>Total</b>	<b>148.00</b>	<b>191.50</b>	<b>156.77</b>	<b>241.98</b>	<b>226.74</b>	<b>181.25</b>	<b>213.70</b>	<b>220.36</b>	<b>265.65</b>	<b>226.62</b>

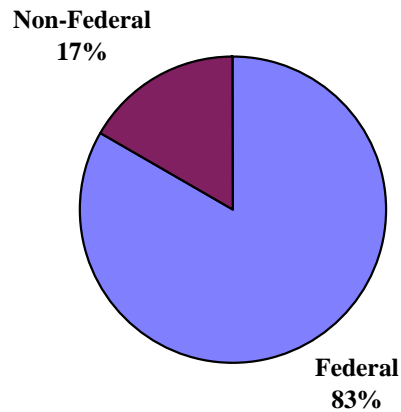
\* Fractional number of projects depicts a split of projects among departments.

Source: DSS Awards Data

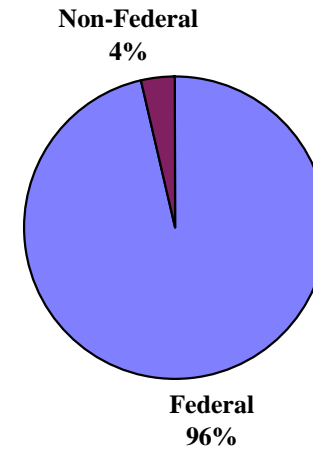
*Total External Proposals by Sponsor*

Sponsor	1996-97	1997-98	1998-99	1999-00	2000-01	2001-02	2002-03	2003-04	2004-05	2005-06
DHHS	\$4,009,878	\$3,953,244	\$5,081,106	\$10,110,307	\$6,645,241	\$8,089,183	\$25,227,743	\$21,618,678	\$27,100,773	\$36,837,088
NSF	\$975,695	\$2,650,174	\$2,346,026	\$4,856,082	\$3,997,313	\$3,316,697	\$6,660,609	\$3,954,935	\$5,641,435	\$7,894,765
DOEd	\$28,300	\$548,836		\$437,313	\$566,461	\$681,026	\$1,444,675		\$2,552,028	\$1,355,076
DOD	\$4,402,931	\$148,653	\$12,000	\$3,772,519	\$79,985			\$1,254,101	\$985,822	\$209,641
Other Federal	\$38,942	\$374,656	\$415,163	\$1,034,582	\$629,704	\$180,678	\$13,217,273	\$2,119,685	\$2,724,116	\$1,112,145
<b>Total Federal</b>	<b>\$9,455,746</b>	<b>\$7,675,563</b>	<b>\$7,854,295</b>	<b>\$20,210,803</b>	<b>\$11,918,704</b>	<b>\$12,267,584</b>	<b>\$46,550,300</b>	<b>\$28,947,399</b>	<b>\$39,004,174</b>	<b>\$47,408,715</b>
Industrial	\$1,817,860	\$1,632,042	\$8,938,642	\$317,605	\$1,116,176	\$1,490,122	\$1,169,786	\$3,759,999	\$1,918,748	\$1,491,922
ST,LCL,FGN Govt's, & Misc.	\$85,988	\$97,402	\$111,675	\$157,241	\$83,500	\$209,933	\$309,844	\$1,987,526	\$178,982	\$259,878
<b>Total Non-Federal</b>	<b>\$1,903,848</b>	<b>\$1,729,444</b>	<b>\$9,050,317</b>	<b>\$474,846</b>	<b>\$1,199,676</b>	<b>\$1,700,055</b>	<b>\$1,479,630</b>	<b>\$5,747,525</b>	<b>\$2,097,730</b>	<b>\$1,751,800</b>
<b>Total Liberal Arts</b>	<b>\$11,359,594</b>	<b>\$9,405,007</b>	<b>\$16,904,612</b>	<b>\$20,685,649</b>	<b>\$13,118,380</b>	<b>\$13,967,639</b>	<b>\$48,029,930</b>	<b>\$34,694,924</b>	<b>\$41,101,904</b>	<b>\$49,160,515</b>

**1996-97 External Proposals**



**2005-06 External Proposals**



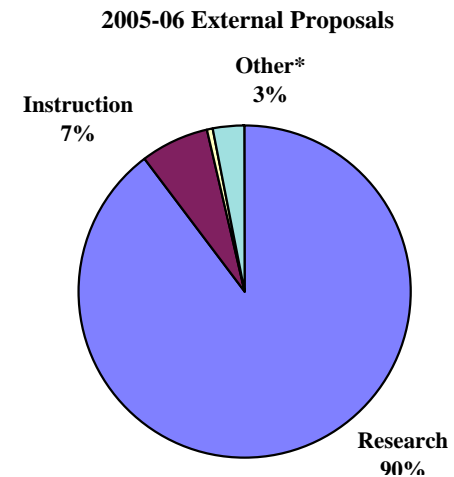
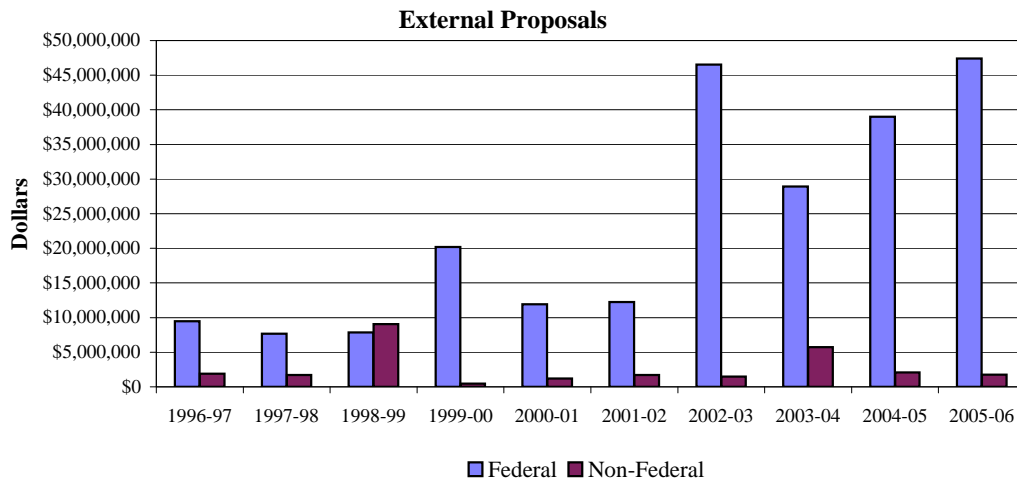
Source: DSS Proposal Data

# Total External Proposals by Program

Data Digest 2006-07

College of Liberal Arts

	1996-97	1997-98	1998-99	1999-00	2000-01	2001-02	2002-03	2003-04	2004-05	2005-06
<b>Proposals by Program</b>										
Research	\$9,632,160	\$8,102,879	\$15,507,350	\$17,348,023	\$11,769,999	\$12,790,309	\$31,718,651	\$28,118,643	\$35,814,518	\$44,069,695
Instruction	\$451,062	\$733,259	\$397,346	\$2,427,051	\$272,836	\$729,530	\$409,839	\$1,580,412	\$2,581,315	\$3,308,839
Fellowships	\$73,516	\$70,754	\$67,528	\$233,047	\$553,782	\$40,753	\$9,130	\$248,701	\$63,025	\$237,225
Other*	\$1,202,856	\$498,115	\$932,388	\$677,528	\$521,763	\$407,047	\$15,892,310	\$4,747,168	\$2,643,046	\$1,544,756
<b>Total Proposals</b>	<b>\$11,359,594</b>	<b>\$9,405,007</b>	<b>\$16,904,612</b>	<b>\$20,685,649</b>	<b>\$13,118,380</b>	<b>\$13,967,639</b>	<b>\$48,029,930</b>	<b>\$34,694,924</b>	<b>\$41,101,904</b>	<b>\$49,160,515</b>
<b>Proposals by Source</b>										
Federal	\$9,455,746	\$7,675,563	\$7,854,295	\$20,210,803	\$11,918,704	\$12,267,584	\$46,550,300	\$28,947,399	\$39,004,174	\$47,408,715
Non-Federal	\$1,903,848	\$1,729,444	\$9,050,317	\$474,846	\$1,199,676	\$1,700,055	\$1,479,630	\$5,747,525	\$2,097,730	\$1,751,800
<b>Total Proposals</b>	<b>\$11,359,594</b>	<b>\$9,405,007</b>	<b>\$16,904,612</b>	<b>\$20,685,649</b>	<b>\$13,118,380</b>	<b>\$13,967,639</b>	<b>\$48,029,930</b>	<b>\$34,694,924</b>	<b>\$41,101,904</b>	<b>\$49,160,515</b>



\* Other includes: Service, Outreach, and Engagement

Source: DSS Proposal Data

*Total External Proposals by Department*

**Data Digest 2006-07**

*College of Liberal Arts*

<b>Department</b>	<b>1996-97</b>	<b>1997-98</b>	<b>1998-99</b>	<b>1999-00</b>	<b>2000-01</b>	<b>2001-02</b>	<b>2002-03</b>	<b>2003-04</b>	<b>2004-05</b>	<b>2005-06</b>
Administration					\$140,850	\$32,984	\$280,661	\$347,902	\$42,457	\$39,626
American Studies						\$4,662	\$750			
Communication	\$5,630	\$100,825	\$167,342	\$207,797	\$697,114	\$52,856	\$1,263,558	\$732,949	\$1,333,706	\$5,646,577
English		\$29,263	\$263,983	\$428,741	\$640,958	\$266,922	\$468,568	\$1,107,015	\$812,881	\$0
Foreign Languages and Literatures	\$129,785	\$518,971	\$81,038	\$349,763	\$26,537	\$342,411	\$25,974	\$1,000	\$1,064,373	\$156,298
Health and Kinesiology	\$329,859	\$600,280	\$511,111	\$159,875	\$388,087	\$631,189	\$752,478	\$756,941	\$1,684,410	\$4,252,799
History		\$16,402	\$6,894,716	\$418,738	\$86,520	\$141,471	\$165,191	\$110,199	\$63,425	\$336,500
Philosophy	\$481,250		\$45,750	\$2,000	\$2,800		\$12,907,179	\$3,581,310	\$756,778	\$225,003
Political Science	\$15,000	\$452,370	\$102,377	\$313,122	\$45,065	\$304,155	\$270,890	\$211,396	\$2,131,345	\$1,468,121
Psychological Sciences	\$7,059,091	\$3,460,214	\$4,803,590	\$11,699,603	\$6,573,643	\$4,560,071	\$19,071,191	\$16,165,907	\$15,516,146	\$20,168,100
Sociology and Anthropology	\$857,315	\$1,367,805	\$2,096,031	\$305,707	\$747,772	\$1,367,519	\$2,089,398	\$1,562,553	\$4,455,548	\$1,101,087
Speech, Language, and Hearing Sciences	\$2,471,547	\$2,840,736	\$1,931,674	\$6,662,862	\$3,645,226	\$6,192,222	\$10,690,408	\$9,931,614	\$13,136,008	\$15,726,099
Student Services and Counseling				\$17,286						
Visual and Performing Arts	\$10,117	\$18,141	\$7,000	\$97,655	\$123,107	\$71,177	\$43,687	\$25,000	\$30,500	\$40,305
Women's Studies				\$22,500	\$701			\$161,138	\$74,327	
<b>Total</b>	<b>\$11,359,594</b>	<b>\$9,405,007</b>	<b>\$16,904,612</b>	<b>\$20,685,649</b>	<b>\$13,118,380</b>	<b>\$13,967,639</b>	<b>\$48,029,933</b>	<b>\$34,694,924</b>	<b>\$41,101,904</b>	<b>\$49,160,515</b>

<b>Department</b>	<b>1996-97</b>	<b>1997-98</b>	<b>1998-99</b>	<b>1999-00</b>	<b>2000-01</b>	<b>2001-02</b>	<b>2002-03</b>	<b>2003-04</b>	<b>2004-05</b>	<b>2005-06</b>
Administration					0.60	1.16	1.55	2.10	4.00	4.00
American Studies						0.20	0.25			
Communication	2.00	4.30	2.49	4.20	1.77	4.20	2.76	4.45	8.00	24.65
English		4.00	3.50	3.00	7.20	9.73	4.25	6.10	2.75	
Foreign Languages and Literatures	3.00	2.61	1.50	1.79	1.50	0.20	1.00	1.00	2.21	2.00
Health and Kinesiology	8.00	11.70	14.59	8.15	7.00	15.90	20.62	11.85	14.38	20.98
History		2.75	5.00	4.00	3.00	4.00	2.00	3.00	1.30	2.60
Philosophy	4.00		2.25	1.00	1.00		1.00	4.00	3.75	0.50
Political Science	2.00	4.96	5.20	4.38	2.00	5.00	3.00	5.05	5.03	7.20
Psychological Sciences	24.00	30.98	34.11	36.06	33.02	32.75	36.33	35.68	35.48	37.72
Sociology and Anthropology	13.00	10.35	14.30	8.80	14.94	19.34	11.47	12.62	16.75	14.78
Speech, Language, and Hearing Sciences	13.00	18.30	12.45	19.05	15.85	17.40	17.03	22.54	17.90	26.50
Student Services and Counseling				0.50						
Visual and Performing Arts	2.00	5.00	1.00	4.00	3.00	5.00	3.00	2.00	4.00	1.70
Women's Studies				1.00	1.00			0.62	0.50	
<b>Total</b>	<b>71.00</b>	<b>94.95</b>	<b>96.39</b>	<b>95.93</b>	<b>91.88</b>	<b>114.88</b>	<b>104.26</b>	<b>111.01</b>	<b>116.05</b>	<b>142.63</b>

\* Fractional number of projects depicts a split of projects among departments.

Source: DSS Proposal Data



*For questions concerning material in digest contact:*

College of Liberal Arts  
100 N. University Street  
West Lafayette, IN 47907-2098  
765-494-3663

*Publication Date: September 2007*