

PURDUE
UNIVERSITY

COLLEGE OF LIBERAL ARTS 

Voices ♦ Communities ♦ Cultures

Data Digest
2008-09

Facts about:

Students

Instruction

Faculty & Staff

Finances

Research

Students		Faculty & Staff	
Historical Enrollment by Student Level	4	Faculty & Staff Headcount	27
Undergraduate Enrollment	5	Graduate Staff Headcount by Department	28
Undergraduate Enrollment by Department	6	Tenured & Tenure Track Faculty Headcount by Gender	29
Graduate Enrollment by Department	7	Tenured & Tenure Track Faculty Headcount by Department	30
Enrollment by Gender	8	Tenured & Tenure Track Faculty Headcount by Race/Ethnicity	31
Undergraduate Enrollment by Race/Ethnicity	9	Tenured & Tenure Track Faculty Headcount by Gender & Rank	32
Undergraduate Enrollment by International Students	10	Tenured & Tenure Track Faculty Headcount by Race & Rank	33
Undergraduate Enrollment by Major/Minor	11	Faculty & Staff Headcount by Gender	34
Undergraduate Enrollment by Major/Minor (Continued)	12	Faculty & Staff Headcount by Classification and Race/Ethnicity	35
Degrees Conferred by Degree Level	13	Tenure Track and Clinical Faculty Searches	36
Baccalaureate Degrees Conferred by Department	14	Promotions by Rank, Gender & Race/Ethnicity	37
Average SAT Scores	15	Finances	
Retention and Graduation Rates	16	Total Annual Expenditures	39
Instruction		Total Annual Expenditures by Category	40
Student Credit Hours by Department - All Semesters	18	Total General Fund Expenditures	41
Average Class Size by Department	19	Total Gift Fund Expenditures	42
Weekly Teacher Class Hours per General Fund Faculty FTE	20	Total Sponsored Program Expenditures	43
Weekly Student Class Hours - All Semesters	21	Expenditures by Type & Source	44
Weekly Student Class Hours - Fall Semesters	22	Development Annual Giving	45
Weekly Student Class Hours by Type of Instr. and Rank of Instructor	23	Endowment Market Value	46
Weekly Student Class Hours by Department	24	Endowment Income Summary	47
Weekly Student Class Hours - Summary University	25	Research	
		Total Annual Sponsored Program Awards	49
		Total Extramural Awards by Sponsor	50
		Total Extramural Awards by Activity Type	51
		Total Extramural Awards by Department	52
		Total Extramural Proposals by Sponsor	53
		Total Extramural Proposals by Activity Type	54
		Total Extramural Proposals by Department	55



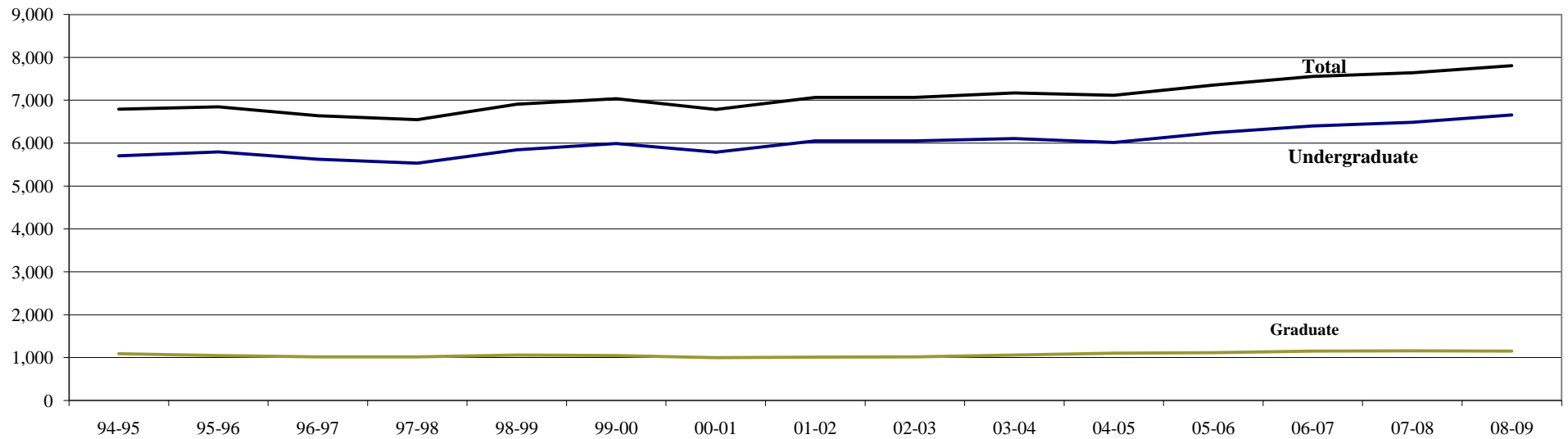
Students

Historical Fall Semester Enrollment by Student Level

Data Digest 2008-09

College of Liberal Arts

Classification	94-95	95-96	96-97	97-98	98-99	99-00	00-01	01-02	02-03	03-04	04-05	05-06	06-07	07-08	08-09
Undergraduate	5,704	5,795	5,623	5,536	5,846	5,993	5,787	6,054	6,052	6,109	6,014	6,239	6,403	6,486	6,657
Graduate	1,088	1,050	1,019	1,014	1,062	1,045	1,001	1,010	1,015	1,062	1,102	1,113	1,154	1,155	1,149
Total Liberal Arts	6,792	6,845	6,642	6,550	6,908	7,038	6,788	7,064	7,067	7,171	7,116	7,352	7,557	7,641	7,806
University Enrollment	34,484	34,685	35,156	35,715	36,878	37,762	37,871	38,208	38,564	38,847	38,653	38,712	39,228	39,102	40,090
% of University Total	20%	20%	19%	18%	19%	19%	18%	18%	18%	18%	18%	19%	19%	20%	19%



Economics was a shared program with the School of Management. The figures above include 50% of all Economics majors through 2000-01

Source: OIR Student Data

Residence				
	Liberal Arts		University	
	Number	% of Total	Number	% of Total
Indiana Resident	4,877	73%	20,791	65%
Out-of-State	1,570	24%	8,610	27%
International	210	3%	2,360	7%
	6,657		31,761	

Classification				
	Liberal Arts		University	
	Number	% of Total	Number	% of Total
First Year (1s & 2s)	1,752	26%	9,011	28%
Sophomore (3s & 4s)	1,632	25%	7,367	23%
Junior (5s & 6s)	1,574	24%	6,868	22%
Senior (7s & 8s)	1,699	26%	8,245	26%
Nondegree	-	<1%	270	1%
Total Undergraduate	6,657		31,761	
Total Graduate/Prof.	1,149	15%	8,329	21%
	7,806		40,090	

Gender				
	Liberal Arts		University	
	Number	% of Total	Number	% of Total
Male	2,722	41%	18,349	58%
Female	3,935	59%	13,412	42%
	6,657		31,761	

Full / Part-time Status				
	Liberal Arts		University	
	Number	% of Total	Number	% of Total
Full-Time	6,432	97%	30,468	96%
Part-Time	225	3%	1,293	4%
	6,657		31,761	

Figures include 100% of all Economics majors.

Source: OIR Student Data

Ethnicity					
Department	African	Asian	Hispanic	Native	Total
	American	American	American	American	
Anthropology	3	3	6	1	13
Communication	61	33	43	4	141
English	17	22	12	4	55
Foreign Languages and Literatures	7	7	16	3	33
Health and Kinesiology	53	15	32	5	105
History	7	8	5	4	24
Interdisciplinary Studies	11	6	8	3	28
Philosophy	3	2	4	1	10
Political Science	14	20	17	2	53
Psychological Sciences	63	36	37	9	145
Sociology	38	10	32	1	81
Speech, Language, and Hearing Sciences	6	5	4	1	16
Visual and Performing Arts	32	33	28	9	102
General, CODO	50	59	31	5	145
All Liberal Arts	365	259	275	52	951
All Purdue	1,081	1,754	926	175	3,936
Liberal Arts %	34%	15%	30%	30%	24%

	Ethnicity			
	Liberal Arts		University	
	Number	% of Total	Number	% of Total
African American	365	5%	1,081	3%
Asian American	259	4%	1,754	6%
Hispanic American	275	4%	926	3%
Native American	52	1%	175	1%
Caucasian	5,341	80%	24,751	78%
Other	106	2%	460	1%
Unreported	50	1%	260	1%
Non-domestic	209	3%	2,354	7%
Total	6,657		31,761	

Fall Semester Undergraduate Enrollment by Department

Data Digest 2008-09

College of Liberal Arts

UNDERGRADUATES	94-95	95-96	96-97	97-98	98-99	99-00	00-01	01-02	02-03	03-04	04-05	05-06	06-07	07-08	08-09
Anthropology	-	-	-	-	-	-	-	-	-	-	-	-	-	-	65
Communication	998	988	983	955	1,033	1,210	1,248	1,285	1,055	897	770	758	788	879	947
English	331	366	394	391	431	440	460	476	515	510	489	477	484	493	533
Foreign Languages and Literatures	109	101	95	89	85	99	90	108	126	143	147	165	178	181	168
Health and Kinesiology	393	443	394	630	625	589	508	477	512	530	567	572	629	672	751
History	183	205	185	181	160	169	165	178	234	274	291	285	274	288	291
Interdisciplinary Studies	49	38	28	27	37	43	58	63	70	79	98	128	148	148	142
Philosophy	26	15	18	28	24	20	17	25	30	42	40	44	47	53	48
Political Science	261	235	222	243	233	248	264	323	325	388	361	413	458	403	388
Psychological Sciences	725	689	680	657	698	717	729	767	852	882	886	898	920	885	877
Sociology*	444	445	425	392	405	377	372	383	454	461	449	458	452	476	451
Speech, Language, and Hearing Sciences	204	210	212	202	219	198	178	176	161	180	187	227	258	262	244
Visual and Performing Arts	566	538	530	602	628	691	707	796	823	829	835	802	792	790	786
Undecided/CODO	1,110	1,197	1,115	1,005	1,138	1,053	991	997	895	894	894	1,012	975	956	966
Total Liberal Arts	5,399	5,470	5,281	5,402	5,716	5,854	5,787	6,054	6,052	6,109	6,014	6,239	6,403	6,486	6,657

* 94-95 to 07-08 data include Sociology and Anthropology

Source: OIR Student Data

Fall Semester Graduate Enrollment by Department / Program

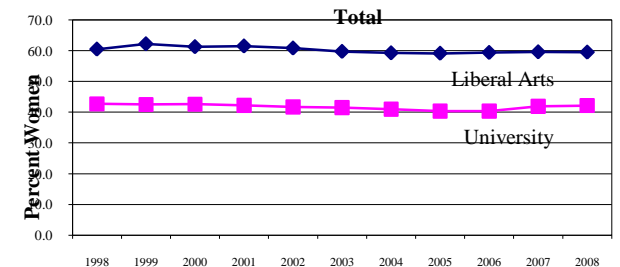
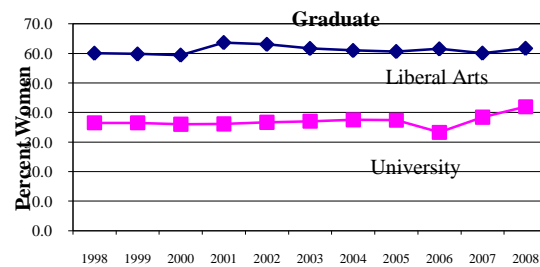
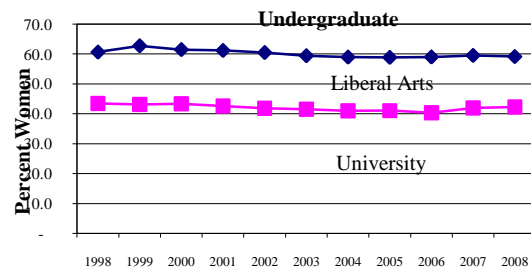
Data Digest 2008-09

College of Liberal Arts

Graduate Students	94-95	95-96	96-97	97-98	98-99	99-00	00-01	01-02	02-03	03-04	04-05	05-06	06-07	07-08	08-09
American Studies	42	41	42	41	42	35	37	37	45	48	46	44	44	40	42
Communication	107	93	93	95	96	94	98	98	96	100	100	111	110	111	116
Comparative Literature	27	24	27	31	34	34	36	29	26	32	33	31	30	28	23
English	248	240	236	231	238	261	238	214	225	236	231	218	224	225	231
Foreign Languages and Literatures	80	83	85	64	61	64	69	69	59	60	83	83	82	86	89
Health and Kinesiology	76	71	63	69	79	69	74	76	69	72	76	79	92	92	94
History	65	63	58	52	60	55	44	53	61	67	81	80	81	90	72
Linguistics	-	-	4	6	7	9	17	19	23	24	23	26	27	31	33
Philosophy	44	52	47	39	42	38	38	43	44	53	58	70	65	64	53
Political Science	54	62	73	71	63	68	60	59	57	57	55	61	67	64	62
Psychological Sciences	123	130	118	121	120	105	98	96	97	105	108	106	102	92	95
Sociology and Anthropology	89	77	68	74	66	67	66	72	67	69	79	81	89	86	82
Speech, Language, and Hearing Sciences	87	69	60	85	97	94	81	85	76	80	71	68	89	93	97
Visual and Performing Arts	46	45	45	35	57	52	45	60	70	59	58	55	52	53	60
Total Liberal Arts	1,088	1,050	1,019	1,014	1,062	1,045	1,001	1,010	1,015	1,062	1,102	1,113	1,154	1,155	1,149

Source: OIR Student Data

Student Level	1998	1999	2000	2001	2002	2003	2004	2005	2006	2007	2008
Undergraduates											
Men	2,278	2,210	2,282	2,400	2,450	2,544	2,542	2,567	2,626	2,627	2,722
Women	3,505	3,715	3,637	3,778	3,747	3,722	3,651	3,672	3,777	3,859	3,935
Percent Women (Liberal Arts)	60.6	62.7	61.4	61.2	60.5	59.4	59.0	58.9	59.0	59.5	59.1
Percent Women (University)	43.4	43.1	43.3	42.6	41.8	41.5	41.0	41.0	40.3	41.9	42.2
Graduate Students											
Men	427	424	398	367	375	407	430	438	444	461	440
Women	635	621	603	643	640	655	672	675	710	694	709
Percent Women (Liberal Arts)	60.1	59.8	59.4	63.7	63.1	61.7	61.0	60.6	61.5	60.1	61.7
Percent Women (University)	36.5	36.5	36.0	36.1	36.7	37.0	37.5	37.4	33.3	38.4	41.9
Total											
Men	2,705	2,634	2,680	2,767	2,825	2,951	2,972	3,005	3,070	3,088	3,162
Women	4,140	4,336	4,240	4,421	4,387	4,377	4,323	4,347	4,487	4,553	4,644
Percent Women (Liberal Arts)	60.5	62.2	61.3	61.5	60.8	59.7	59.3	59.1	59.4	59.6	59.5
Percent Women (University)	42.7	42.5	42.6	42.2	41.7	41.5	41.0	40.4	40.4	41.9	42.2



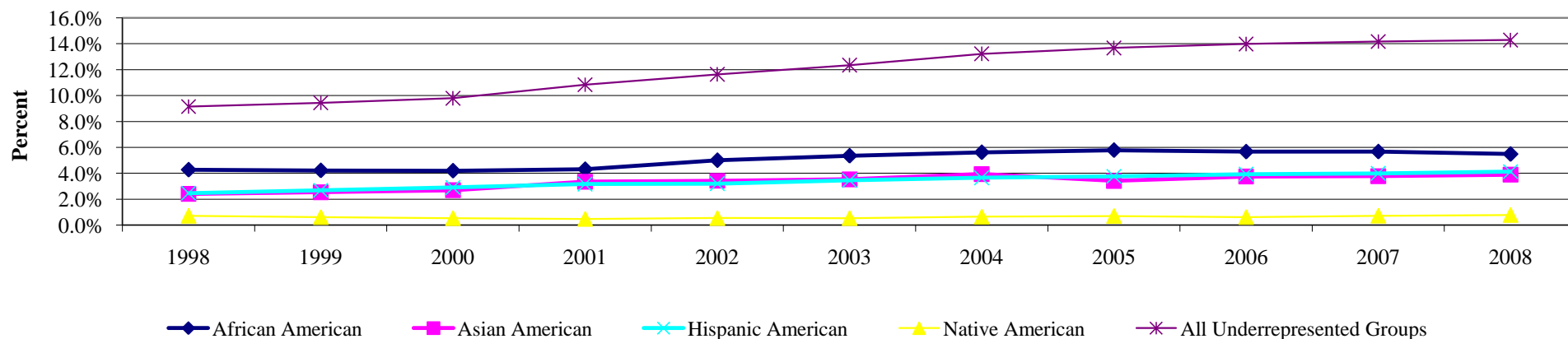
Source: OIR Student Data

Student Level	1998	1999	2000	2001	2002	2003	2004	2005	2006	2007	2008
Undergraduates											
African American	250	253	243	261	303	327	338	361	363	368	365
Asian American	141	152	156	203	207	216	237	213	240	245	259
Hispanic American	144	161	168	192	194	211	220	235	252	259	275
Native American	42	37	31	29	33	33	39	44	40	47	52
All Underrepresented Groups	535	566	567	656	704	754	795	853	895	919	951
CLA Undergrad Enrollment	5,846	5,993	5,787	6,054	6,052	6,109	6,014	6,239	6,403	6,486	6,657

Undergraduate Percentages

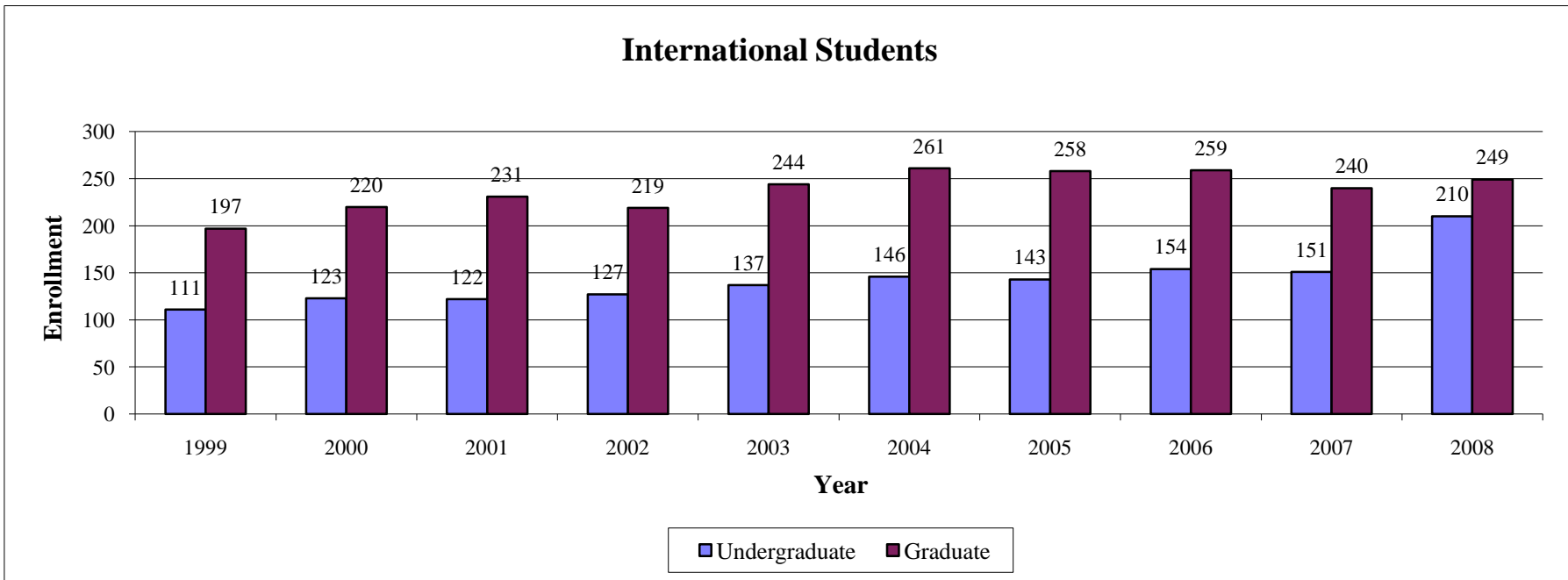
African American	4.3%	4.2%	4.2%	4.3%	5.0%	5.4%	5.6%	5.8%	5.7%	5.7%	5.5%
Asian American	2.4%	2.5%	2.7%	3.4%	3.4%	3.5%	3.9%	3.4%	3.7%	3.8%	3.9%
Hispanic American	2.5%	2.7%	2.9%	3.2%	3.2%	3.5%	3.7%	3.8%	3.9%	4.0%	4.1%
Native American	0.7%	0.6%	0.5%	0.5%	0.5%	0.5%	0.6%	0.7%	0.6%	0.7%	0.8%
All Underrepresented Groups	9.2%	9.4%	9.8%	10.8%	11.6%	12.3%	13.2%	13.7%	14.0%	14.2%	14.3%

Undergraduate Enrollment by Race/Ethnicity



Source: OIR Student Data

	1999	2000	2001	2002	2003	2004	2005	2006	2007	2008
Undergraduate	111	123	122	127	137	146	143	154	151	210
Graduate	197	220	231	219	244	261	258	259	240	249



Source: OIR Student Data

Undergraduate Enrollment by Major/Minor - Fall 2008

Data Digest 2008-09

College of Liberal Arts

Major/Minor Area by Department	Major Enrollment	Minor Enrollment	Total Enrollment
Visual and Performing Arts			
Art & Design	-	73	73
Art History	35	47	82
Dance	-	12	12
Electronic/Time-Based Art	-	2	2
Fine Arts Concentration	64	-	64
Industrial Design Prof Program	116	-	116
Interior Design	163	-	163
Music History and Theory	-	14	14
Photo & Related Media	76	-	76
Theatre Acting	34	37	71
Theatre Concentration	35	-	35
Theatre Design & Technology	-	5	5
Visual Arts Design Teaching	8	-	8
Visual Arts Teaching, K-12	63	-	63
Visual Communications Design	195	-	195
Department Total	789	190	979
Speech, Language, and Hearing Sciences			
Speech, Language, and Hearing Sciences	187	-	187
Speech, Language, and Hearing Sciences Concentration	6	-	6
Speech, Language, and Hearing Sciences/Pre-professional option	56	-	56
Department Total	249	-	249
English			
Creative Writing	110	30	140
English	171	74	245
English Teaching	166	36	202
Professional Writing	96	-	96
Department Total	543	140	683
Interdisciplinary Studies			
African-American Studies	7	13	20
Asian American Studies	-	2	2
Asian Studies	11	9	20
Classical Studies	14	25	39
Comparative Literature	6	-	6
Film Video Studies	-	9	9
Global Studies	-	10	10
Interdisciplinary Film/Video	76	18	94
Italian Studies	2	1	3
Jewish Studies	2	5	7
Linguistics	18	22	40
Medieval & Renaissance Studies	3	10	13
Peace Studies	-	8	8
Religious Studies	11	29	40
Women's Studies	6	26	32
Department Total	156	187	343

Major/Minor Area by Department	Major Enrollment	Minor Enrollment	Total Enrollment
History			
History	286	108	394
Department Total	286	108	394
Foreign Languages and Literatures			
Chinese	-	7	7
French	18	30	48
French Teaching	5	-	5
German	7	16	23
German Secondary Teaching	4	-	4
Italian	-	9	9
Japanese	36	7	43
Latin	1	-	1
Russian	4	1	5
Spanish	65	164	229
Spanish - Alternate Track	-	7	7
Spanish Secondary Teaching	29	-	29
Department Total	169	241	410
Philosophy			
Philosophy	50	77	122
Department Total	50	77	122
Health and Kinesiology			
Health & Fitness	174	-	174
Health Promotion	53	1	54
Health Promotion Concentration	47	-	47
Health & Safety Teaching	25	-	25
Physical Education All Grade Teaching	97	-	97
Movement & Sport Science	249	-	249
Pre-Athletic Training	65	-	65
Athletic Training	41	-	41
Personal Fitness Training	5	-	5
Pre-Personal Fitness Training	11	-	11
PE/H& S Teaching	2	-	2
Department Total	769	1	770
Political Science			
Political Science	412	73	485
Environmental Politics and Policy	-	2	2
Department Total	412	75	487

Source: DSS Student Data

Undergraduate Enrollment by Major/Minor (Continued) - Fall 2008

Data Digest 2008-09

College of Liberal Arts

Major/Minor Area by Department	Major Enrollment	Minor Enrollment	Total Enrollment
Psychological Sciences			
Psychology	279	227	506
Pre-Psychology	520	-	520
Behavioral Neuroscience Psychology	81	-	81
Department Total	880	227	1,107
Anthropology			
Anthropology	72	24	96
Department Total	72	24	96
Sociology			
Law & Society	354	45	399
Sociology	116	104	220
Department Total	470	149	619
Communication			
Pre-Communication	586	-	586
General Communication	59	85	144
Interpersonal Communication	15	-	15
Mass Communication	57	-	57
Organizational Communication	17	-	17
Public Relations	2	-	2
Public Relations & Rhetorical Advocacy	247	-	247
Human Relations	10	-	10
Department Total	993	85	1,078
Other and Preparatory			
General-Undecided	270	-	270
Non LA Undecided	623	-	623
Undecided Pre-Law	1	-	1
Aerospace Studies	-	4	4
Military Science & Leadership	-	17	17
Naval Science	-	10	10
Department Total	894	31	925

Minors Outside Liberal Arts

	College	Enrollment
Agricultural Systems Management	AG	1
Animal Sciences	AG	1
Farm Management	AG	1
Food & Agribusiness Management	AG	1
Forensic Sciences	AG	187
Furniture Design	AG	3
Wildlife Science	AG	2
Wood Products Manufacturing Technology	AG	1
Child Development and Family Studies	CFS	111
Food and Nutrition	CFS	3
Electrical Computer Engineering	ENG	1
Economics	MGMT	9
Management	MGMT	23
Biological Sciences	SCI	15
Chemistry	SCI	2
Earth & Atmospheric Sciences	SCI	3
Mathematics	SCI	4
Physics	SCI	2
Statistics	SCI	1
Computer & Information Technology	TECH	16
Manufacturing Graphics (for ID majors only)	TECH	1
Metallic Materials Technology	TECH	1
Organizational Leadership	TECH	173
Total		562

Number of Majors with Enrolled Students	68
Number of Minors within Liberal Arts with Enrolled Students	45
Number of Minors outside Liberal Arts with Enrolled Students	23
Total Enrollment of Majors	6732
Total Enrollment of Minors	2097

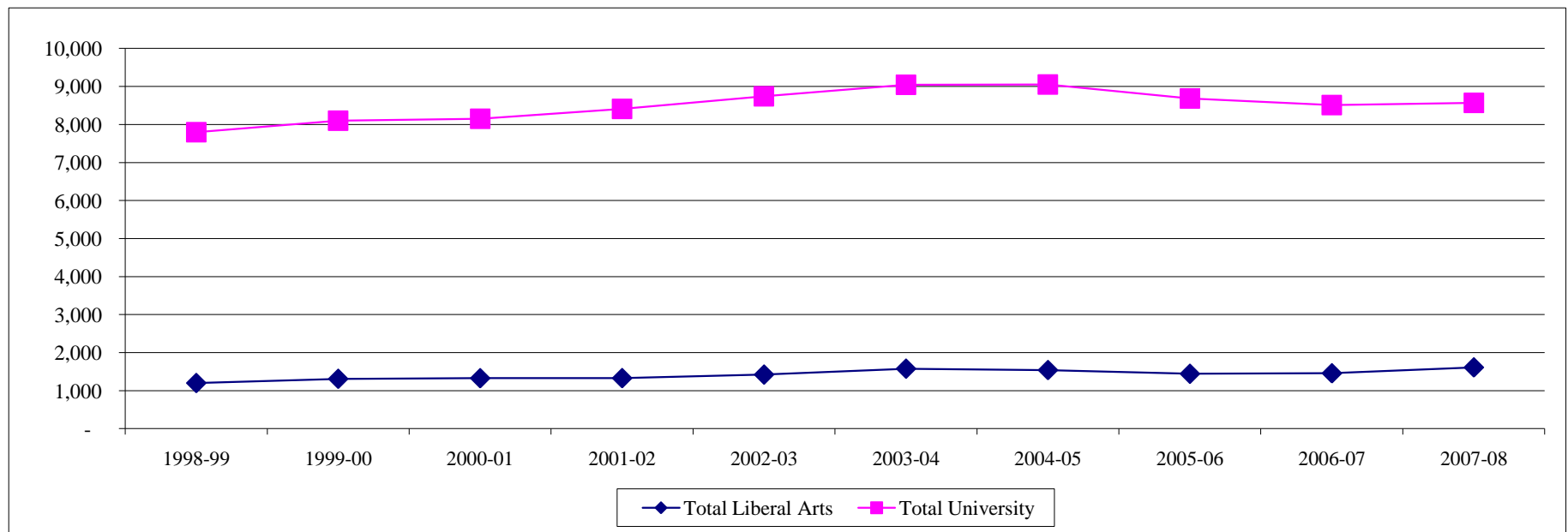
Source: DSS Student Data

Degrees Conferred by Degree Level

Data Digest 2008-09

College of Liberal Arts

Area	Degree Level	1998-99	1999-00	2000-01	2001-02	2002-03	2003-04	2004-05	2005-06	2006-07	2007-08
Liberal Arts	Baccalaureate	974	1,064	1,070	1,092	1,185	1,295	1,268	1,181	1,191	1,389
	Master's	158	159	162	149	166	204	182	182	167	138
	Doctorate	68	88	95	88	71	79	91	80	99	85
	Total Liberal Arts	1,200	1,311	1,327	1,329	1,422	1,578	1,541	1,443	1,457	1,612
University	Associate	682	732	640	669	683	644	543	529	458	458
	Baccalaureate	5,351	5,436	5,579	5,800	5,999	6,154	6,197	5,948	5,839	5,940
	Education Specialist	3	1	1	1	2	-	3	2	1	1
	Professional	134	176	184	192	203	216	239	219	230	245
	Master's	1,159	1,286	1,284	1,340	1,392	1,583	1,548	1,420	1,377	1,326
	Doctorate	466	468	464	409	463	446	524	566	607	595
	Total University	7,795	8,099	8,152	8,411	8,742	9,043	9,054	8,684	8,512	8,565
Liberal Arts - % of University Total		15%	16%	16%	16%	16%	17%	17%	17%	17%	19%



2007-08 is the most recent fiscal year degree data

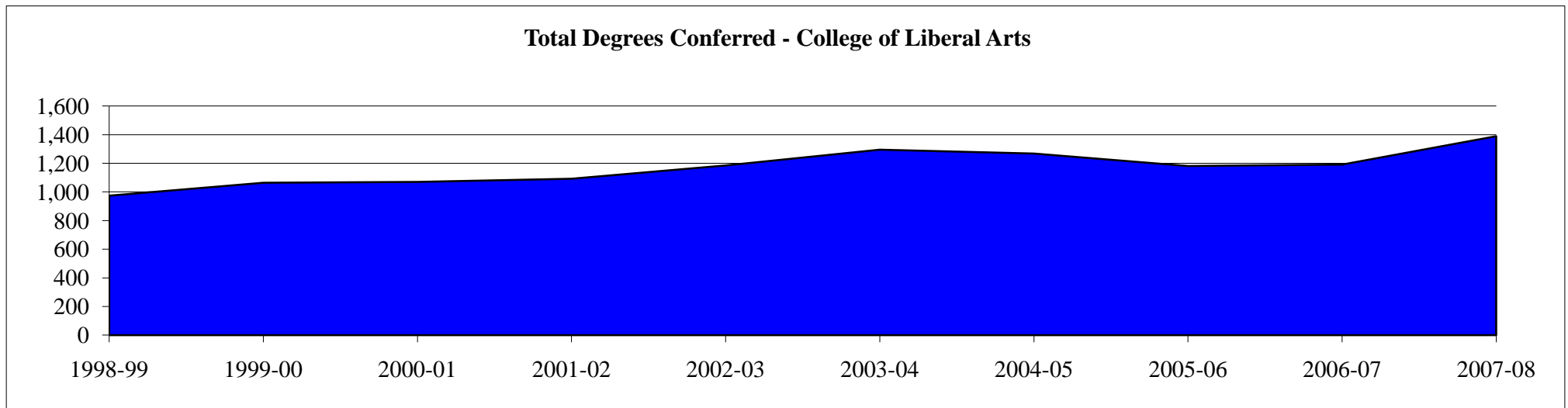
Source: OIR Student Data

Baccalaureate Degrees Conferred by Department

Data Digest 2008-09

College of Liberal Arts

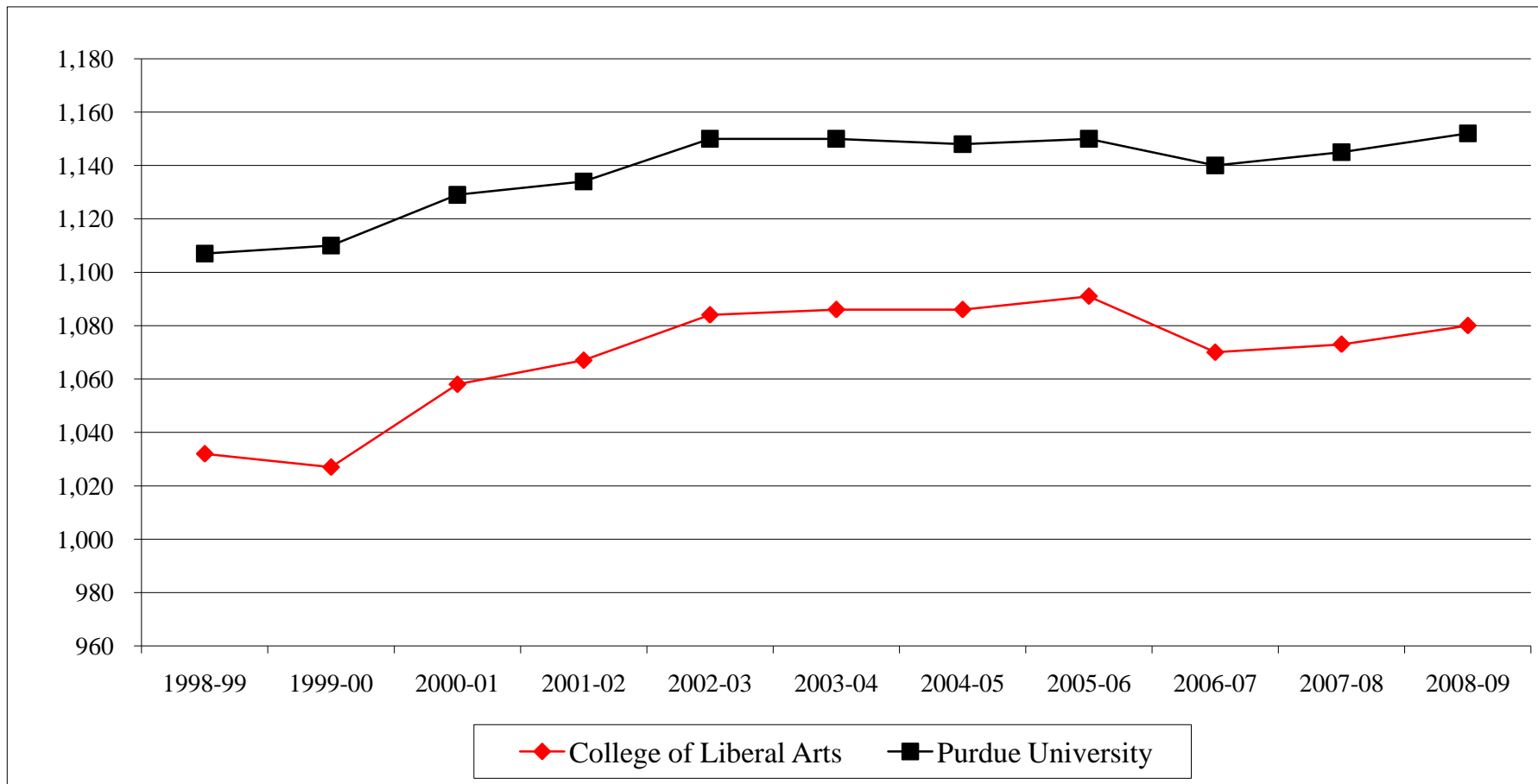
Department	1998-99	1999-00	2000-01	2001-02	2002-03	2003-04	2004-05	2005-06	2006-07	2007-08
Communication	211	240	258	316	283	265	203	166	166	193
Economics	24	29	0	0	0	0	0	0	0	0
English	87	97	115	105	144	146	132	130	109	124
Foreign Languages and Literatures	33	35	28	18	28	35	36	34	28	53
Health and Kinesiology	85	106	115	95	94	108	119	115	97	136
History	40	50	50	37	52	68	77	82	80	85
Interdisciplinary Studies	7	7	7	19	13	23	25	32	39	34
Philosophy	8	7	5	7	5	14	10	11	10	19
Political Science	60	59	61	53	67	102	90	87	101	127
Psychological Sciences	141	164	156	178	205	210	233	210	228	242
Sociology and Anthropology	114	105	97	105	118	127	130	118	125	135
Speech, Language, and Hearing Sciences	61	61	55	53	52	57	52	50	55	90
Visual & Performing Arts	103	104	123	106	124	140	161	146	153	151
Total College of Liberal Arts	974	1,064	1,070	1,092	1,185	1,295	1,268	1,181	1,191	1,389



2007-08 is the most recent fiscal year degree data

Source: OIR Student Data

	1998-99	1999-00	2000-01	2001-02	2002-03	2003-04	2004-05	2005-06	2006-07	2007-08	2008-09
College of Liberal Arts	1,032	1,027	1,058	1,067	1,084	1,086	1,086	1,091	1,070	1,073	1,080
Purdue University	1,107	1,110	1,129	1,134	1,150	1,150	1,148	1,150	1,140	1,145	1,152



Source: Office of Enrollment Management

Fall 2002 Beginning Students¹

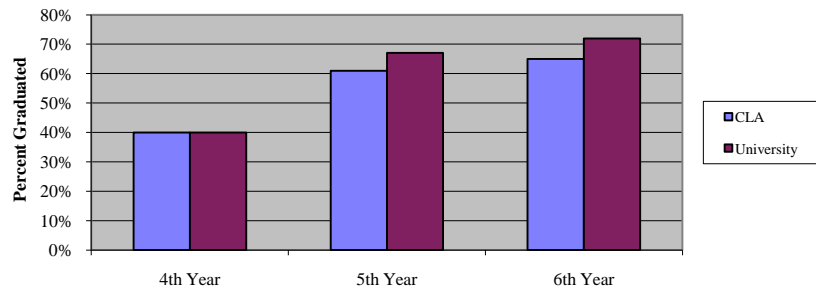
	Status			
	Enrollment		Voluntarily	Academic
	Continued	Graduated	Withdrew	Dismissal
After Year 1	82%	0%	16%	3%
After Year 2	73%	0%	21%	6%
After Year 3	69%	1%	23%	8%
After Year 4	28%	40%	23%	9%
After Year 5	5%	61%	25%	9%
After Year 6	2%	65%	24%	9%

N=1019

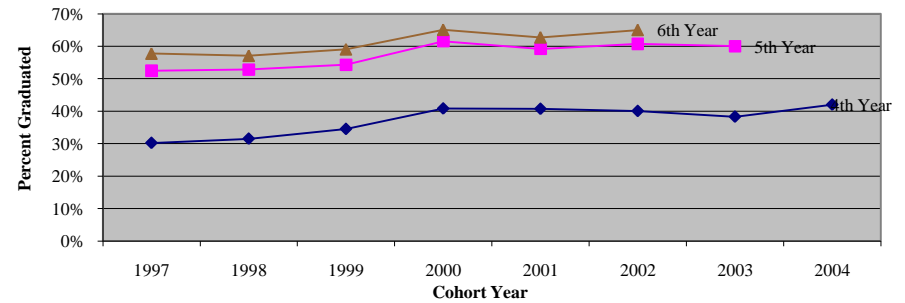
Historical Graduation Rate

Fall	Beginning	First-Year	Graduated	Graduated	Graduated
Beginners	Enrollment	Retention	Within	Within	Within
		Rate	4 Years	5 Years	6 Years
1997	1,275	78%	30%	52%	58%
1998	1,356	78%	31%	53%	57%
1999	1,365	78%	35%	54%	59%
2000	1,176	83%	41%	62%	65%
2001	1,162	81%	41%	59%	63%
2002	1,019	82%	40%	61%	65%
2003	1,084	81%	38%	60%	-
2004	1,163	81%	42%	-	-

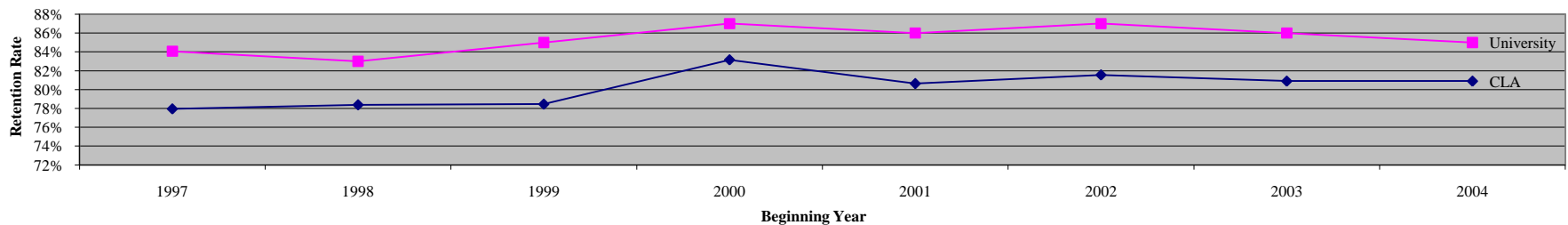
2002 CLA Beginning Students Degree Completed



CLA Historical Graduation Rates

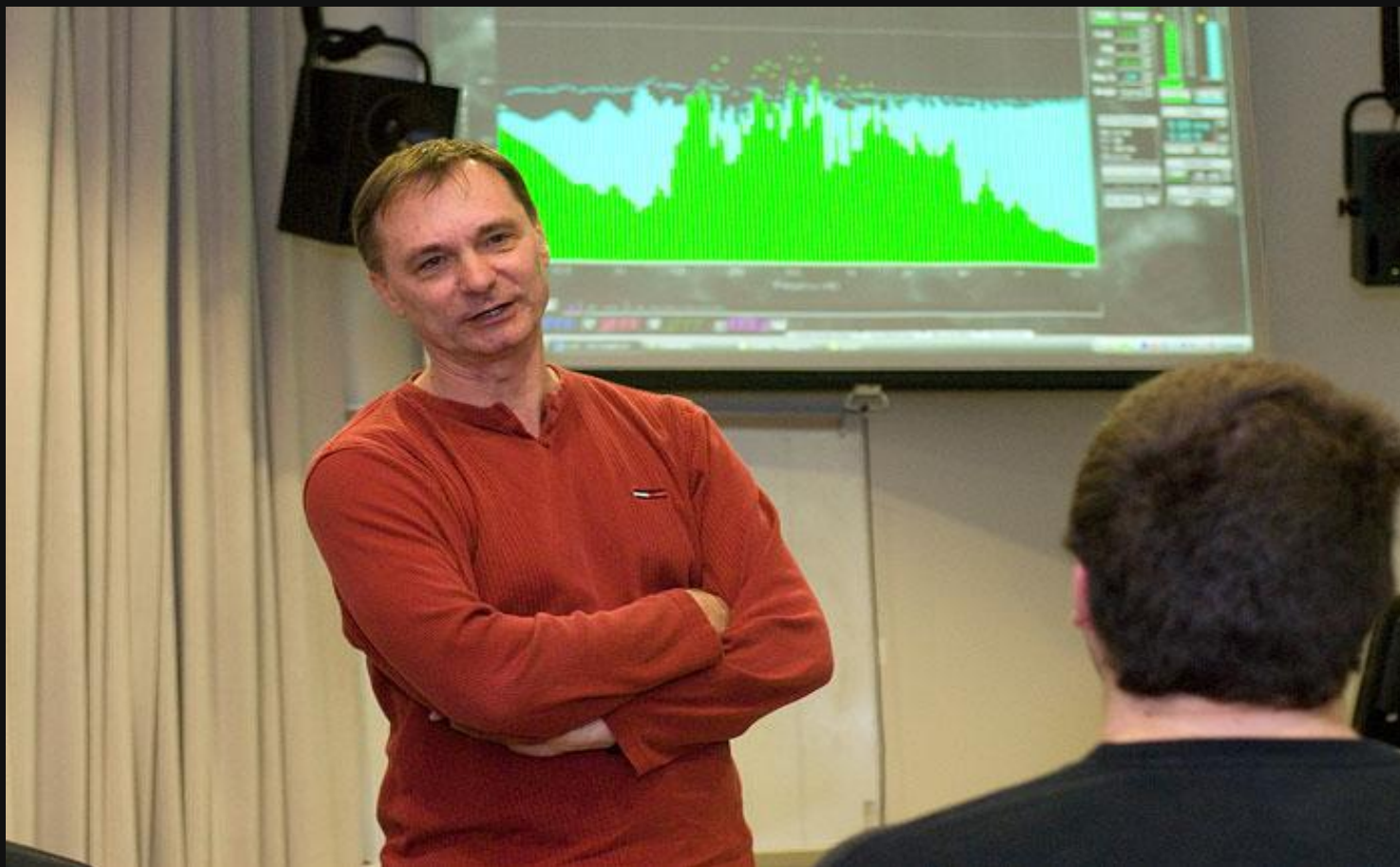


Historical First-Year Retention Rate



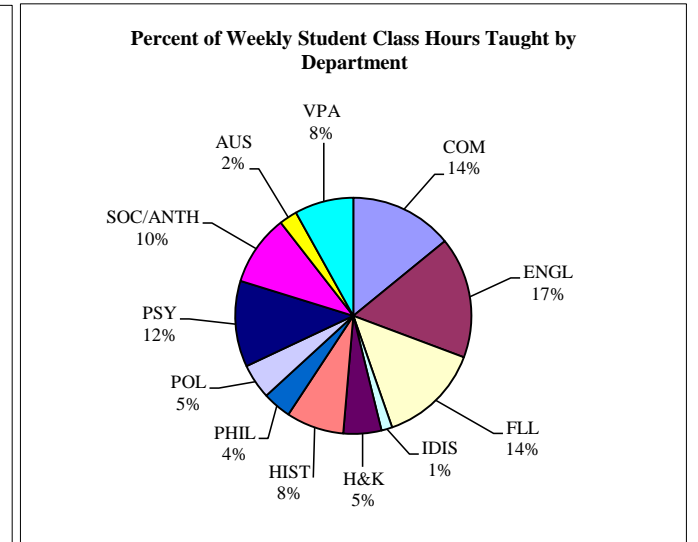
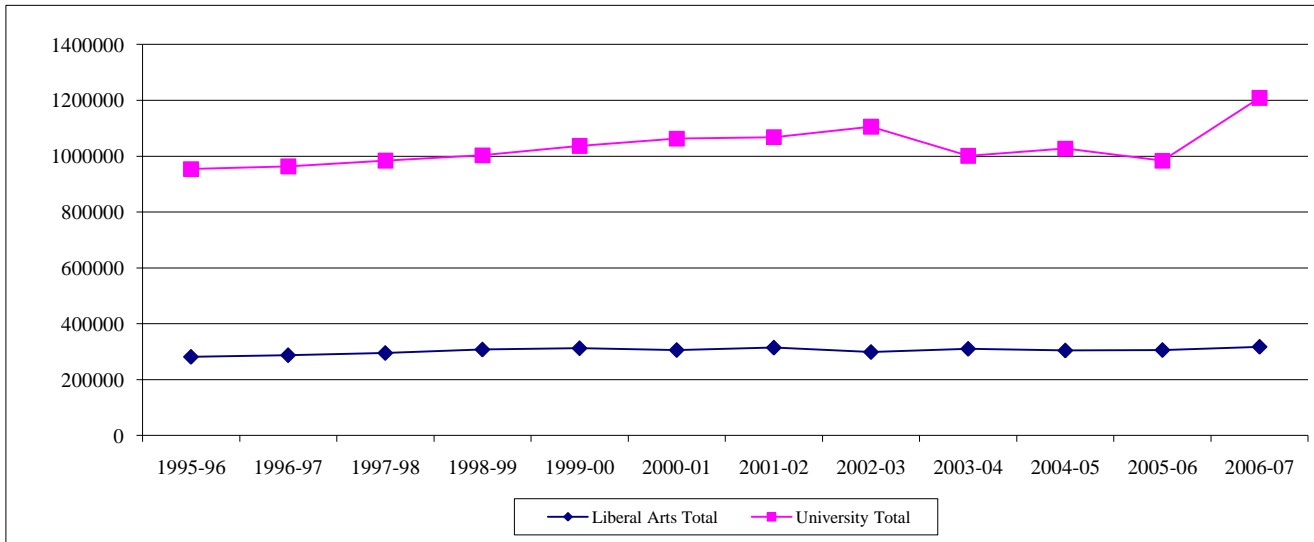
¹ Degree-seeking first-year students who enrolled in summer or fall 2002.

Source: Office of Enrollment Management



Instruction

Department	1995-96	1996-97	1997-98	1998-99	1999-00	2000-01	2001-02	2002-03	2003-04	2004-05	2005-06	2006-07
Communication	40,976	41,209	42,294	44,233	46,139	46,343	46,547	43,107	42,307	40,199	41,640	44,787
English	54,458	56,578	58,084	59,251	61,961	58,356	60,447	56,282	49,957	47,968	48,530	52,713
Foreign Languages and Literatures	35,331	36,414	37,894	38,910	39,274	39,561	39,990	38,277	40,882	41,694	43,327	44,317
General Studies*	4,864	5,811	8,156	7,496	7,815	5,522	4,569	4,864	4,802	5,594	4,530	4,734
Health and Kinesiology	15,270	14,390	14,657	13,971	14,171	14,582	14,213	13,991	15,117	15,399	14,541	16,543
History	23,433	25,280	23,073	25,960	25,302	24,977	25,818	24,305	25,573	24,274	26,347	25,095
Philosophy	8,987	9,089	10,460	11,068	10,971	10,984	11,545	11,160	12,232	12,117	11,514	12,450
Political Science	12,118	13,334	13,956	14,291	13,722	14,400	15,522	14,784	16,340	16,773	17,169	15,254
Psychological Sciences	35,672	35,012	34,761	37,061	37,546	36,073	38,959	36,151	40,626	36,669	36,171	37,411
Sociology and Anthropology	23,153	23,080	22,896	23,471	23,386	23,930	24,461	23,069	24,985	29,514	30,189	30,769
Speech, Language, and Hearing Sciences	5,600	5,768	6,468	7,988	7,679	6,609	6,962	6,891	7,590	7,179	6,729	7,797
Visual and Performing Arts	21,648	21,467	22,523	23,983	24,355	24,515	25,412	25,793	29,835	26,853	25,182	25,630
Liberal Arts Total	281,510	287,432	295,222	307,683	312,321	305,852	314,445	298,674	310,246	304,233	305,869	317,500
% of University Total	30%	29%	29%	29%	29%	30%	29%	27%	31%	30%	31%	26%
University Total	953,667	963,312	984,167	1,003,021	1,036,822	1,062,637	1,068,069	1,105,690	1,001,296	1,027,085	983,610	1,208,766



* General Studies include: Interdisciplinary Studies, Counseling & Student Services, Women Studies, & African American Studies

2007-08 data is not available

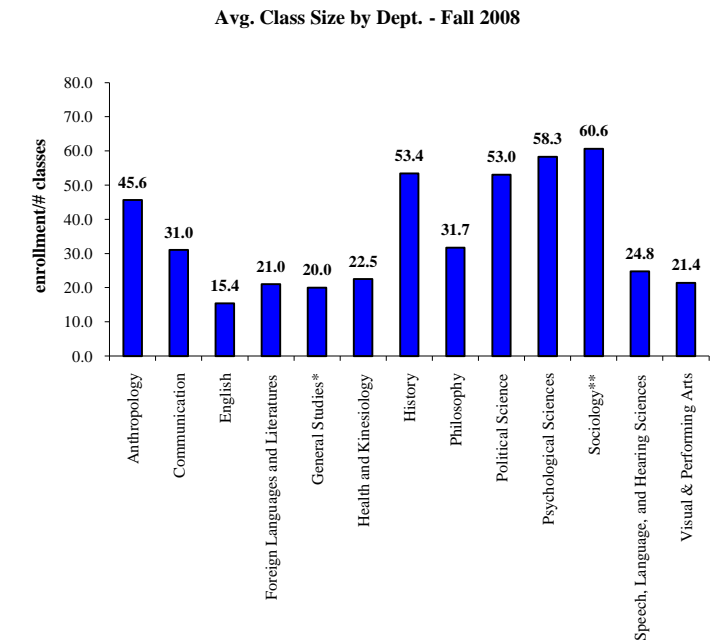
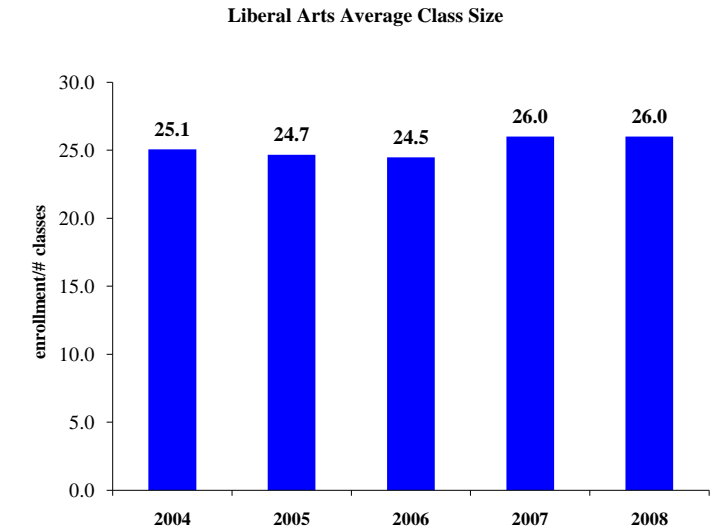
Source: Space Management & Academic Scheduling

Fall Semester Average Class Size by Department - (Organized Classes)

Class Enrollment	2004	2005	2006	2007	2008
Anthropology	-	-	-	-	1,277
Communication	7,031	7,491	7,838	6,787	8,463
English	10,354	10,676	11,284	5,844	9,887
Foreign Languages and Literatures	10,214	10,411	10,507	8,253	7,980
General Studies*	1,306	996	1,329	1,138	2,000
Health and Kinesiology	4,072	4,063	4,282	2,270	2,858
History	3,678	4,442	3,997	3,898	3,578
Philosophy	2,662	2,428	2,634	1,476	1,902
Political Science	2,750	2,827	2,482	2,416	2,544
Psychological Sciences	7,148	6,900	7,181	4,242	5,947
Sociology**	4,909	5,187	5,380	4,585	4,000
Speech, Language, and Hearing Sciences	1,218	1,391	1,653	726	1,810
Visual & Performing Arts	6,889	6,570	6,395	3,954	5,115
Total College of Liberal Arts	62,231	63,381	64,962	45,588	57,359

Number of Classes	2004	2005	2006	2007	2008
Anthropology	-	-	-	-	28
Communication	243	261	275	224	273
English	642	659	728	377	642
Foreign Languages and Literatures	480	482	491	393	380
General Studies*	57	51	57	47	100
Health and Kinesiology	202	227	192	132	127
History	52	64	71	71	67
Philosophy	74	71	71	45	60
Political Science	55	57	47	40	48
Psychological Sciences	147	125	136	79	102
Sociology**	80	91	100	88	66
Speech, Language, and Hearing Sciences	108	122	145	66	73
Visual & Performing Arts	344	359	342	191	239
Total College of Liberal Arts	2,484	2,569	2,655	1,753	2,205

Average Class Size	2004	2005	2006	2007	2008
Anthropology	-	-	-	-	45.6
Communication	28.9	28.7	28.5	30.3	31.0
English	16.1	16.2	15.5	15.5	15.4
Foreign Languages and Literatures	21.3	21.6	21.4	21.0	21.0
General Studies*	22.9	19.5	23.3	24.2	20.0
Health and Kinesiology	20.2	17.9	22.3	17.2	22.5
History	70.7	69.4	56.3	54.9	53.4
Philosophy	36.0	34.2	37.1	32.8	31.7
Political Science	50.0	49.6	52.8	60.4	53.0
Psychological Sciences	48.6	55.2	52.8	53.7	58.3
Sociology**	61.4	57.0	53.8	52.1	60.6
Speech, Language, and Hearing Sciences	11.3	11.4	11.4	11.0	24.8
Visual & Performing Arts	20.0	18.3	18.7	20.7	21.4
Total College of Liberal Arts	25.1	24.7	24.5	26.0	26.0



* General Studies include: Interdisciplinary Studies, Counseling & Student Services and College of Liberal Arts Administration

** 2004 -- 2007 data include Sociology and Anthropology

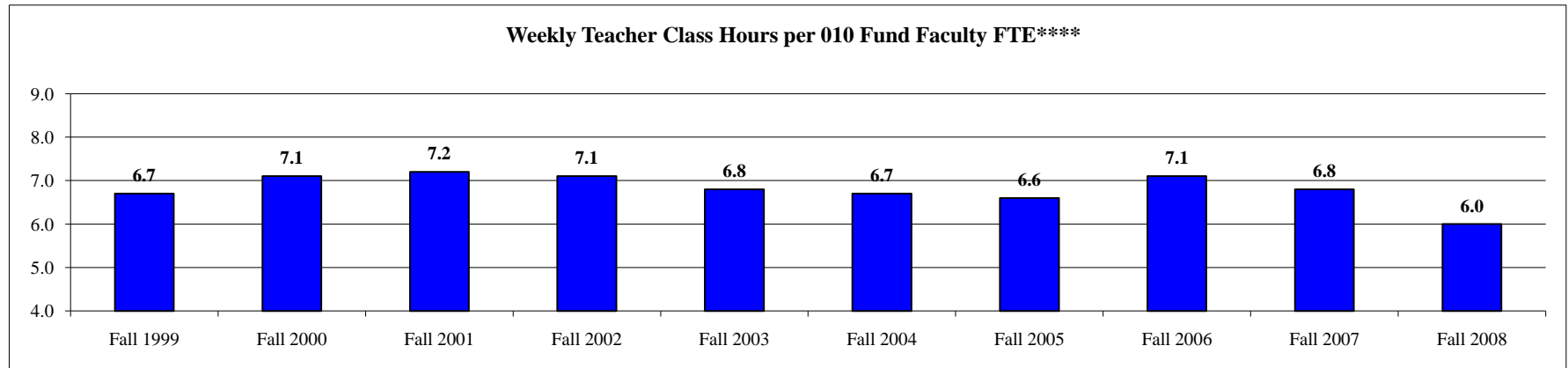
Weekly Class Hours per General Fund Faculty FTE

Data Digest 2008-09

College of Liberal Arts

Department	Fall 1999	Fall 2000	Fall 2001	Fall 2002	Fall 2003	Fall 2004	Fall 2005	Fall 2006	Fall 2007	Fall 2008
Anthropology	-	-	-	-	-	-	-	-	-	4.5
Communication	5.8	5.7	6.5	6.5	6.0	5.4	6.0	6.2	5.2	8.0
English	7.4	7.6	7.0	6.2	6.6	6.7	6.6	6.8	6.6	5.8
Foreign Languages and Literatures	7.9	7.9	8.5	8.1	7.9	7.4	7.5	7.8	8.0	6.7
General Studies*	3.5	5.2	3.6	6.0	0.0	5.5	2.4	0.0	8.5	38.1
Health and Kinesiology	8.1	7.5	7.0	7.4	8.8	10.8**	11.4	9.1	8.7	5.2
History	5.7	5.4	5.6	4.8	4.9	5.0	5.5	5.7	5.5	5.6
Philosophy	4.8	5.0	4.2	5.1	4.3	3.8	3.7	3.5	4.1	4.4
Political Science	4.3	4.4	4.8	5.0	5.4	5.1	5.0	4.0	3.9	4.7
Psychological Sciences	5.1	5.0	5.3	5.1	4.4	4.4	4.1	5.3	4.4	4.1
Sociology***	5.1	5.8	5.0	5.5	4.9	5.1	5.5	4.8	5.3	4.2
Speech, Language, and Hearing Sciences	5.6	7.0	6.2	5.3	5.1	4.7	3.5	11.8	8.5	3.5
Visual and Performing Arts	12.6	12.9	11.8	10.9	11.5	10.9	11.3	11.0	12.8	9.6
College	6.7	7.1	7.2	7.1	6.8	6.7	6.6	7.1	6.8	6.0

All Colleges	Fall 1999	Fall 2000	Fall 2001	Fall 2002	Fall 2003	Fall 2004	Fall 2005	Fall 2006	Fall 2007	Fall 2007
High	12.4	11.9	11.9	12.0	11.5	15.1	11.4	11.8	12.8	23.7
Median	6.7	7.1	7.2	7.1	7.9	6.7	6.6	6.8	6.6	5.0
Low	4.3	4.6	4.3	4.3	0.0	2.0	0.9	0.0	0.2	2.0



* General Studies include: Interdisciplinary Studies, Counseling & Student Services and College of Liberal Arts Administration

**HK 201, 301, and 401 are excluded

***1999 -- 2007 data include Sociology and Anthropology

****Beginning in 2003, these data include deans and department heads

Organized classes only

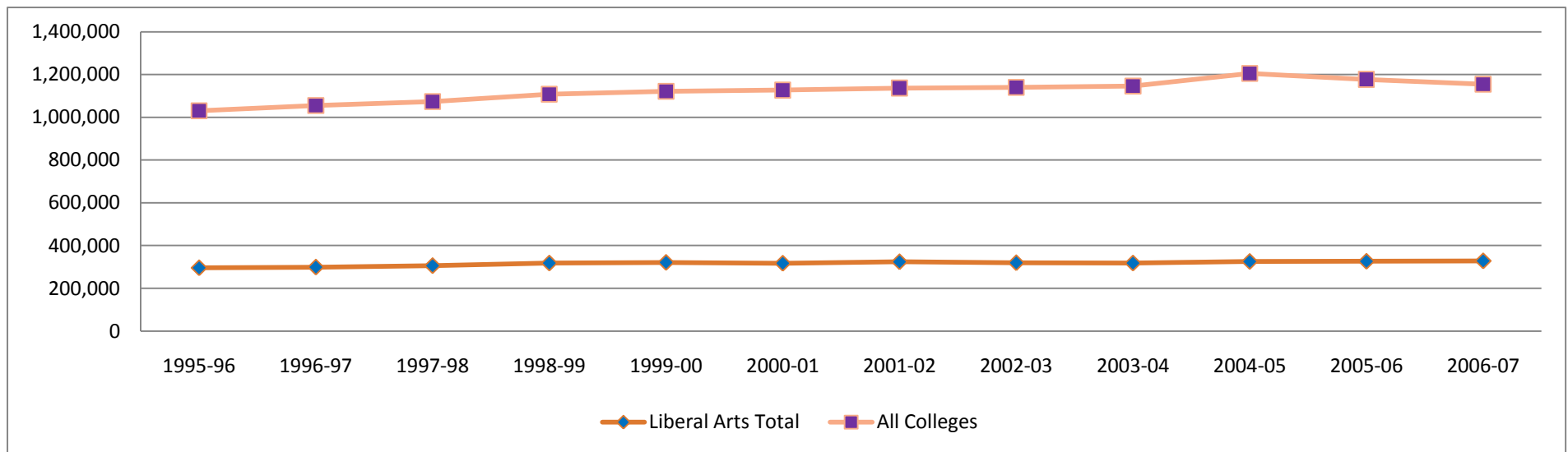
Source: Space Management & Academic Scheduling

Weekly Student Class Hours - All Semesters

Data Digest 2008-09

College of Liberal Arts

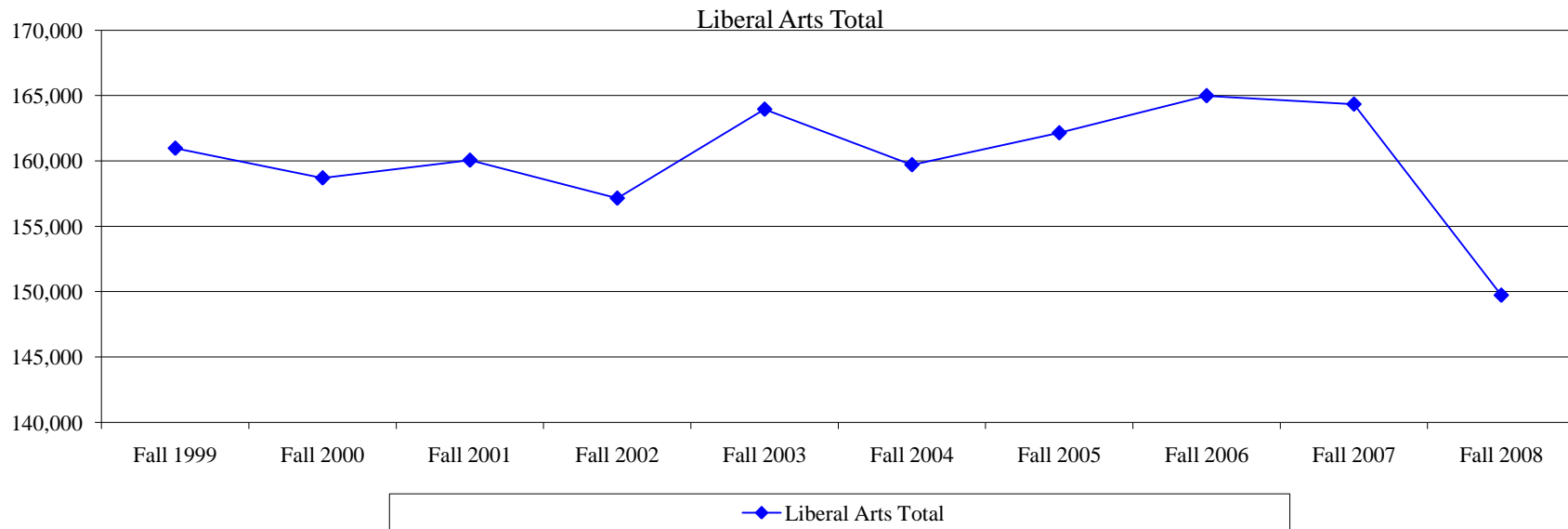
	1995-96	1996-97	1997-98	1998-99	1999-00	2000-01	2001-02	2002-03	2003-04	2004-05	2005-06	2006-07
Liberal Arts Total	295,638	298,970	305,783	317,985	321,145	317,118	324,096	319,573	317,994	325,423	326,330	328,317
% of Academic Total	28.7%	28.7%	28.3%	28.5%	28.7%	28.6%	28.1%	28.0%	27.7%	27.0%	27.7%	28.4%
All Colleges	1,030,011	1,055,084	1,073,741	1,108,280	1,121,532	1,127,026	1,136,739	1,139,995	1,146,267	1,205,221	1,177,209	1,154,470



2007-08 data is not available

Source: Space Management & Academic Scheduling

Departments	Fall 1999	Fall 2000	Fall 2001	Fall 2002	Fall 2003	Fall 2004	Fall 2005	Fall 2006	Fall 2007	Fall 2008
Anthropology	-	-	-	-	-	-	-	-	-	2,867
Communication	22,576	22,366	22,110	20,741	20,736	19,113	20,143	21,245	21,094	21,553
English	33,397	31,575	31,156	30,123	24,903	24,761	25,058	26,497	25,419	23,364
Foreign Languages and Literatures	22,903	22,953	23,070	22,229	24,987	24,654	25,338	25,720	25,979	19,509
General Studies*	3,061	2,352	2,336	2,447	2,448	2,844	2,725	3,162	2,985	4,693
Health and Kinesiology	8,790	9,186	8,949	8,500	10,627	10,774	10,130	10,747	10,503	7,297
History	11,030	11,806	11,142	10,282	11,639	10,807	13,033	11,782	11,452	10,346
Philosophy	4,686	4,565	4,919	5,107	5,617	5,450	4,987	5,279	5,023	4,689
Political Science	6,063	6,127	6,812	7,268	8,337	7,871	8,101	7,058	7,389	7,313
Psychological Sciences	17,499	15,952	18,227	18,013	19,779	19,097	17,686	18,530	17,214	15,095
Sociology**	10,574	11,182	10,968	11,094	12,202	13,348	14,499	14,485	15,481	11,273
Speech, Language, and Hearing Sciences	3,690	3,523	3,376	3,422	4,063	2,931	3,358	3,937	4,255	4,659
Visual and Performing Arts	16,697	17,111	16,985	17,923	18,608	18,052	17,083	16,539	17,540	17,075
Liberal Arts Total	160,966	158,698	160,050	157,149	163,946	159,702	162,141	164,981	164,334	149,733



* General Studies include: Interdisciplinary Studies, Counseling & Student Services and College of Liberal Arts Administration

** 1999 -- 2007 data include Sociology and Anthropology

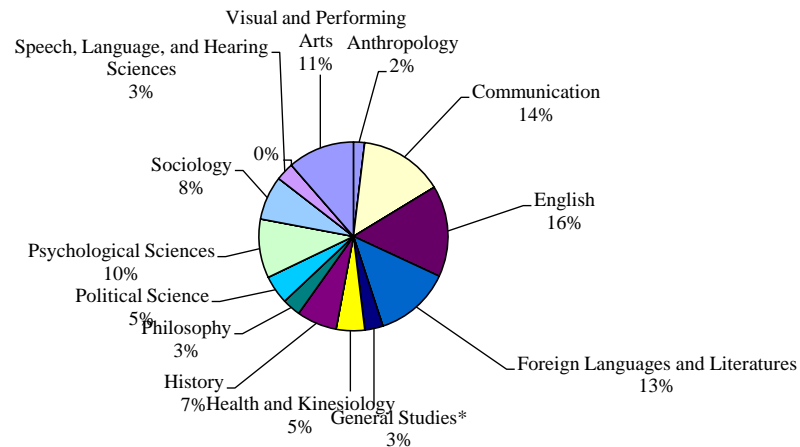
Source: Space Management & Academic Scheduling

Type of Instruction	Tenure and tenure-track faculty	Non-tenure track appointment	Graduate student staff	All other instructors	Total	Percent of All WSCH
College of Liberal Arts Total						
ORGANIZED CLASS INSTRUCTION						
Non-laboratory class instruction						
Lecture	56,429	28,086	34,019	8,144	126,678	
Recitation	291	304	3,685	915	5,195	
Total non-lab	56,720	28,390	37,704	9,059	131,873	88%
Percent of all non-lab WSCH	43%	22%	29%	7%	100%	
Laboratory class instruction						
Laboratory	4,103	5,316	7,121	1,311	17,851	
Lab preparatory	-	-	-	-	-	
Clinics	-	11	-	-	11	
Total lab	4,103	5,327	7,121	1,311	17,862	12%
Percent of all lab WSCH	23%	30%	40%	7%	100%	
ALL ORGANIZED CLASSES	60,823	33,717	44,825	10,370	149,735	100%
Percent of all organized WSCH	41%	23%	30%	7%	100%	

Source: Space Management & Academic Scheduling

Departments	Tenure and tenure-track faculty	%	Non-tenure track appointment	%	Graduate student staff	%	All other instructors	%	Total	Pct of all WSCH
<i>Anthropology</i>	2,708	94%	-	0%	-	0%	159	6%	2,867	2%
<i>Communication</i>	5,213	24%	6,763	31%	8,105	38%	1,471	7%	21,552	14%
<i>English</i>	6,163	26%	3,411	15%	10,139	43%	3,651	16%	23,364	16%
<i>Foreign Languages and Literatures</i>	4,534	23%	5,164	26%	9,700	50%	112	1%	19,510	13%
<i>General Studies*</i>	617	13%	1,248	27%	1,875	40%	955	20%	4,695	3%
<i>Health and Kinesiology</i>	1,776	24%	2,267	31%	2,205	30%	1,048	14%	7,296	5%
<i>History</i>	9,413	91%	427	4%	365	4%	141	1%	10,346	7%
<i>Philosophy</i>	3,073	66%	-	0%	1,565	33%	51	1%	4,689	3%
<i>Political Science</i>	5,961	82%	114	2%	873	12%	364	5%	7,312	5%
<i>Psychological Sciences</i>	9,190	61%	4,156	28%	1,441	10%	308	2%	15,095	10%
<i>Sociology</i>	3,903	35%	3,264	29%	2,773	25%	1,333	12%	11,273	8%
<i>Speech, Language, and Hearing Sciences</i>	1,743	37%	1,620	35%	746	16%	549	12%	4,658	3%
<i>Visual and Performing Arts</i>	6,529	38%	5,282	31%	4,877	29%	386	2%	17,074	11%
Liberal Arts Total	60,823	41%	33,716	23%	44,664	30%	10,528	7%	149,731	100%

WSCH as Percent of CLA Total



* General Studies include: Interdisciplinary Studies, Counseling & Student Services and College of Liberal Arts Administration

Source: Space Management & Academic Scheduling

All Campus

Summary data for 2008 - Purdue University at West Lafayette, Indiana

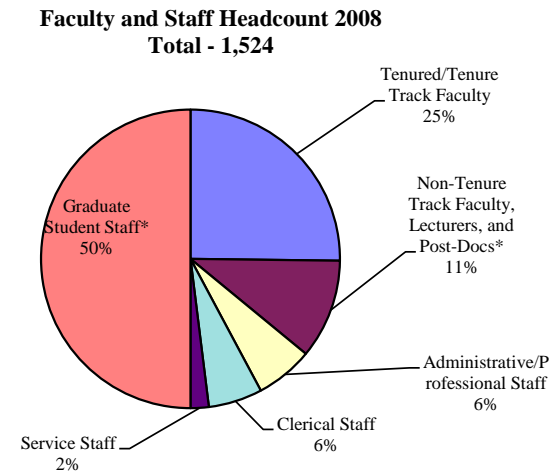
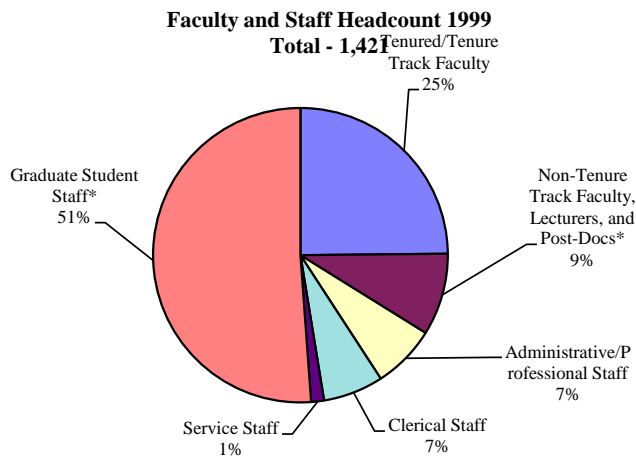
	1	1a	2	2a	3	3a	4	4a	5	5a	6	7	7a	8	8a	9	
	WCH Per FTE Gen. Fund Faculty		WCH Per FTE Gen. Fund Grad Asst		WSCH Per FTE Gen. Fund Faculty		WSCH Per FTE Gen. Fund Grad Asst		% WSCH taught by Gen. Fund		% UG WSCH taught to non majors	Stu Cred Hour per Gen. Fund FTE		Gen. Fund expend per credit		Sponsored Program exp per Ten/Ten Trck FTE	
	Fall '08	03-08 Change	Fall '08	F03-08 Change	Fall '08	F03-08 Change	Fall '08	F03-08 Change	Faculty	Grad Asst	Fall '08	Faculty	Grad Asst	2007-08	2003-04 in 08\$	2007-08	FY 03-04 to 07-08
AGR	4.4	-8%	0.6	-65%	163	-5%	12	-54%	89%	2%	38%	140	8	\$669	\$634	\$236,961	-13%
CFS	5.8	-36%	2.4	-43%	288	2%	80	-53%	81%	11%	33%	288	66	\$224	\$224	\$316,484	40%
EDUC	4.1	-3%	4.4	-13%	107	23%	106	-17%	71%	29%	49%	142	110	\$359	\$264	\$35,832	-3%
ENGR	4.2	-11%	2.3	-33%	177	-13%	52	-27%	75%	15%	8%	156	22	\$589	\$502	\$311,719	-4%
LA	6.0	-11%	5.9	-23%	215	-9%	142	-22%	63%	30%	50%	192	118	\$173	\$161	\$29,619	-5%
MGMT	5.6	3%	1.5	-46%	406	18%	82	-39%	90%	7%	36%	382	74	\$227	\$213	\$60,491	-43%
PNHS	5.3	291%	1.9	29%	156	64%	36	-16%	87%	5%	10%	133	15	\$434	\$444	\$217,593	-8%
SCI	3.6	-10%	5.7	-4%	231	-8%	164	-7%	55%	35%	79%	218	108	\$278	\$269	\$180,314	-12%
TECH	12.4	21%	8.4	-19%	240	-20%	163	-21%	83%	14%	17%	200	91	\$221	\$199	\$21,051	164%
V MED	2.4	-84%	0.7	-87%	87	-49%	34	-62%	77%	3%	11%	75	10	\$957	\$934	\$103,035	-24%
TOTAL	5.4	-10%	4.6	-20%	207	-7%	118	-20%	70%	22%	46%	188	84	\$308	\$284	\$154,388	-4%

Source: Space Management & Academic Scheduling



Classification	1999	2000	2001	2002	2003	2004	2005	2006	2007	2008
Tenured/Tenure Track Faculty	353	343	347	352	348	355	351	358	372	384
Non-Tenure Track Faculty, Lecturers, and Post-Docs*	128	125	130	132	129	124	156	156	156	164
Clinical/Professional									18	21
Continuing Lecturers									60	60
Limited-term Lecturers									52	60
Post-Doctoral									7	7
Research Faculty									1	1
Visiting Faculty									18	15
Administrative/Professional Staff	99	100	103	107	114	114	106	103	100	95
Clerical Staff	94	94	86	92	84	84	80	80	85	89
Service Staff	20	20	23	19	19	22	25	28	23	30
Graduate Student Staff*	727	748	748	787	773	795	777	788	791	762
Graduate Teaching Assistants									685	640
Graduate Research Assistants									90	89
Graduate Administrative/Professional									2	9
Graduate Lecturer									14	24
Total	1,421	1,430	1,437	1,489	1,467	1,494	1,495	1,513	1,527	1,524

*Further breakdown of these staff types included beginning in 2007



Source: OIR Faculty and Staff Data

Department	2008
Anthropology	
Graduate Teaching Asst/Graduate Lecturer	10
Communication	
Graduate Teaching Asst/Graduate Lecturer	77
Graduate Research Asst.	5
Graduate Administrative/Professional	2
Dean's Office	
Graduate Teaching Asst/Graduate Lecturer	3
Graduate Research Asst.	4
Graduate Administrative/Professional	3
English	
Graduate Teaching Asst/Graduate Lecturer	162
Graduate Research Asst.	2
Foreign Languages and Literatures	
Graduate Teaching Asst/Graduate Lecturer	104
Graduate Research Asst.	4
General Studies*	
Graduate Teaching Asst/Graduate Lecturer	41
Graduate Research Asst.	7
Health and Kinesiology	
Graduate Teaching Asst/Graduate Lecturer	26
Graduate Research Asst.	4
History	
Graduate Teaching Asst/Graduate Lecturer	30
Graduate Research Asst.	2
Philosophy	
Graduate Teaching Asst/Graduate Lecturer	23
Graduate Research Asst.	6
Political Science	
Graduate Teaching Asst/Graduate Lecturer	31
Graduate Research Asst.	5
Psychological Sciences	
Graduate Teaching Asst/Graduate Lecturer	59
Graduate Research Asst.	17
Sociology	
Graduate Teaching Asst/Graduate Lecturer	35
Graduate Research Asst.	8
Speech, Language, and Hearing Sciences	
Graduate Teaching Asst/Graduate Lecturer	19
Graduate Research Asst.	25
Visual & Performing Arts	
Graduate Teaching Asst/Graduate Lecturer	44
Graduate Administrative/Professional	4
Total College of Liberal Arts	762

* General Studies include: Interdisciplinary Studies, Counseling & Student Services, Women Studies, & Afro-American Studies Center

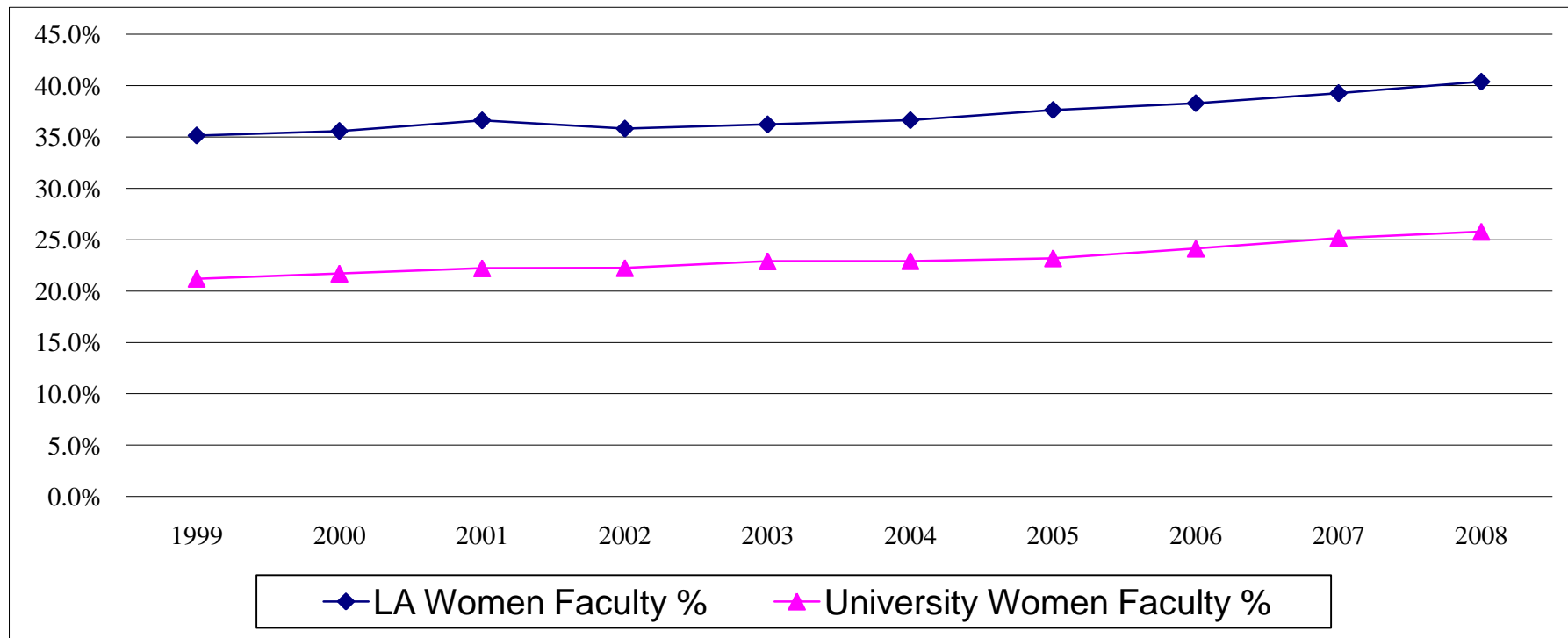
Tenured and Tenure Track Faculty Headcount by Gender

(for Fall Semester in Academic Years)

Data Digest 2008-09

College of Liberal Arts

Gender	1999	2000	2001	2002	2003	2004	2005	2006	2007	2008
Men	229	221	220	226	222	225	219	221	226	229
Women	124	122	127	126	126	130	132	137	146	155
Total Liberal Arts	353	343	347	352	348	355	351	358	372	384
Liberal Arts Women Faculty Percentage	35.1%	35.6%	36.6%	35.8%	36.2%	36.6%	37.6%	38.3%	39.2%	40.4%
University Women Faculty Percentage	21.2%	21.7%	22.2%	22.2%	22.9%	22.9%	23.2%	24.1%	25.2%	25.8%

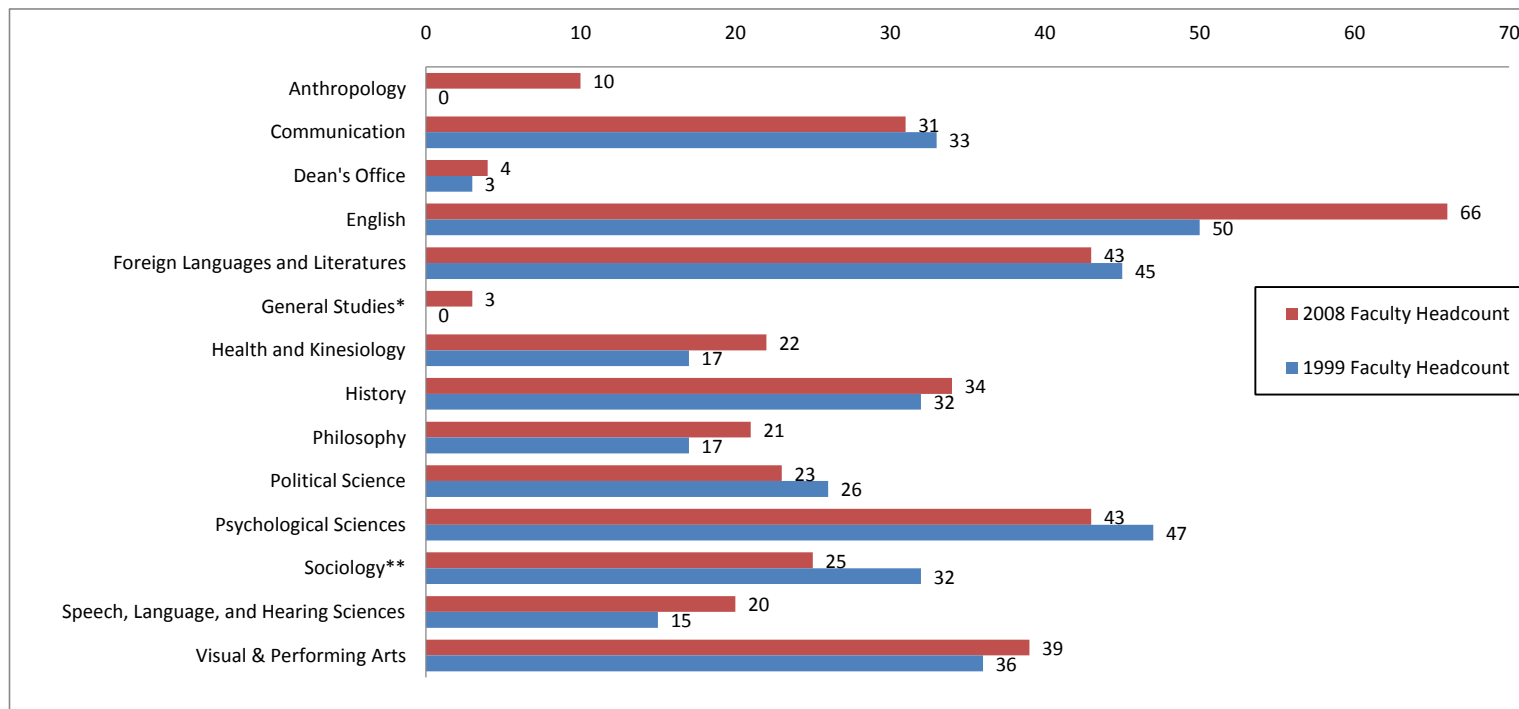


Source: OIR Faculty and Staff Data

*Tenured and Tenure Track Faculty Headcount by Department
(for Fall Semester in Academic Years)*

Data Digest 2008-09
College of Liberal Arts

Department	1999	2000	2001	2002	2003	2004	2005	2006	2007	2008
Anthropology	-	-	-	-	-	-	-	-	-	10
Communication	33	33	28	30	28	28	31	29	31	31
Dean's Office	3	3	3	3	3	3	3	4	4	4
English	50	51	54	56	56	59	57	64	64	66
Foreign Languages and Literatures	45	43	38	41	40	42	41	42	42	43
General Studies*	0	0	0	0	1	1	1	2	3	3
Health and Kinesiology	17	16	17	16	16	15	12	16	18	22
History	32	32	32	32	28	27	29	30	33	34
Philosophy	17	17	19	18	18	18	19	20	22	21
Political Science	26	24	25	26	26	27	27	23	22	23
Psychological Sciences	47	45	47	45	47	48	44	44	43	43
Sociology**	32	29	31	29	29	33	33	33	35	25
Speech, Language, and Hearing Sciences	15	15	16	16	17	17	18	18	19	20
Visual & Performing Arts	36	35	37	40	39	37	36	33	36	39
Total College of Liberal Arts	353	343	347	352	348	355	351	358	372	384



* General Studies include: Interdisciplinary Studies, Counseling & Student Services, Women Studies, & Afro-American Studies Center

** 1999-2007 data include Sociology and Anthropology

Tenured & Tenure Track Faculty Headcount by Race/Ethnicity
 (for Fall Semester in Academic Years, revised for consistency with University Data Digest)

Liberal Arts

Race/Ethnicity	2001	2002	2003	2004	2005	2006	2007	2008
African American	13	13	14	15	15	14	16	19
Asian American	12	19	17	20	19	22	25	28
American Indian	2	2	2	1	1	1	0	0
Hispanic	7	7	9	10	10	10	11	12
White and Other	302	302	296	300	295	299	308	315
International	11	9	10	9	11	12	12	10
Total Faculty	347	352	348	355	351	358	372	384

Domestic

African American	3.9%	3.8%	4.1%	4.3%	4.4%	4.0%	4.4%	5.1%
Asian American	3.6%	5.5%	5.0%	5.8%	5.6%	6.4%	6.9%	7.5%
American Indian	0.6%	0.6%	0.6%	0.3%	0.3%	0.3%	0.0%	0.0%
Hispanic	2.1%	2.0%	2.7%	2.9%	2.9%	2.9%	3.1%	3.2%

<i>Total Domestic Underrepresented</i>	<i>10.1%</i>	<i>12.0%</i>	<i>12.4%</i>	<i>13.3%</i>	<i>13.2%</i>	<i>13.6%</i>	<i>14.4%</i>	<i>15.8%</i>
----------------------------------------	--------------	--------------	--------------	--------------	--------------	--------------	--------------	--------------

White and Other	89.9%	88.0%	87.6%	86.7%	86.8%	86.4%	85.6%	84.2%
-----------------	-------	-------	-------	-------	-------	-------	-------	-------

International	3.2%	2.6%	2.9%	2.5%	3.1%	3.4%	3.2%	2.6%
----------------------	-------------	-------------	-------------	-------------	-------------	-------------	-------------	-------------

University

Race/Ethnicity	2001	2002	2003	2004	2005	2006	2007	2008
African American	30	32	38	41	43	43	46	53
Asian American	149	166	175	183	196	222	244	258
American Indian	5	6	6	5	5	3	3	3
Hispanic	29	28	33	35	35	38	42	47
White and Other	1424	1412	1411	1402	1393	1425	1434	1434
International	55	60	83	101	135	101	103	95
Total Faculty	1,692	1,704	1,746	1,767	1,807	1,832	1,872	1,890

Domestic

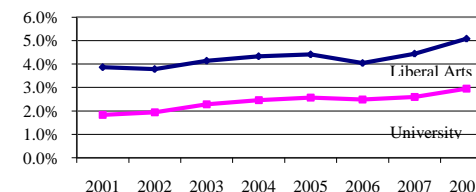
African American	1.8%	1.9%	2.3%	2.5%	2.6%	2.5%	2.6%	3.0%
Asian American	9.1%	10.1%	10.5%	11.0%	11.7%	12.8%	13.8%	14.4%
American Indian	0.3%	0.4%	0.4%	0.3%	0.3%	0.2%	0.2%	0.2%
Hispanic	1.8%	1.7%	2.0%	2.1%	2.1%	2.2%	2.4%	2.6%

<i>Total Domestic Underrepresented</i>	<i>13.0%</i>	<i>14.1%</i>	<i>15.2%</i>	<i>15.8%</i>	<i>16.7%</i>	<i>17.7%</i>	<i>18.9%</i>	<i>20.1%</i>
----------------------------------------	--------------	--------------	--------------	--------------	--------------	--------------	--------------	--------------

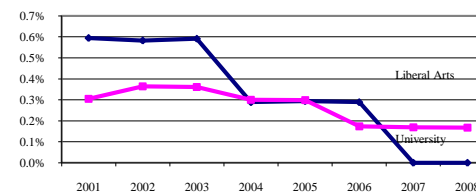
White and Other	87.0%	85.9%	84.8%	84.2%	83.3%	82.3%	81.1%	79.9%
-----------------	-------	-------	-------	-------	-------	-------	-------	-------

International	3.3%	3.5%	4.8%	5.7%	7.5%	5.5%	5.5%	5.0%
----------------------	-------------	-------------	-------------	-------------	-------------	-------------	-------------	-------------

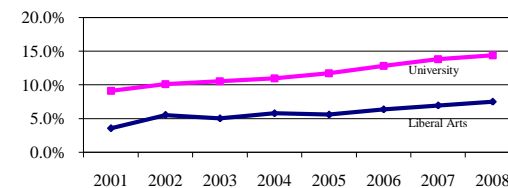
Percentage of African American Faculty



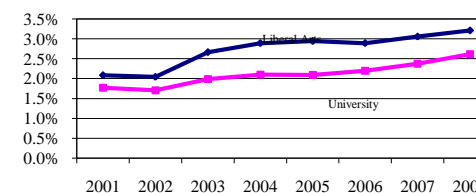
Percentage of American Indian Faculty



Percentage of Asian American Faculty



Percentage of Hispanic faculty



Source: OIR Faculty and Staff Data

Tenured & Tenure Track Faculty by Gender & Rank

Data Digest 2008-09

(for Fall Semester in Academic Years)

College of Liberal Arts

Rank	Gender	1999	2000	2001	2002	2003	2004	2005	2006	2007	2008
Tenured and Tenure Track Faculty											
Assistant Professors											
	Male	35	36	38	40	40	40	36	38	34	36
	Female	46	43	39	41	38	38	38	41	46	49
	Total	81	79	77	81	78	78	74	79	80	85
	% Male	43%	46%	49%	49%	51%	51%	49%	48%	43%	42%
	% Female	57%	54%	51%	51%	49%	49%	51%	52%	58%	58%
Associate Professors											
	Male	92	84	80	83	75	78	74	73	77	79
	Female	54	54	60	54	58	61	63	65	68	68
	Total	146	138	140	137	133	139	137	138	145	147
	% Male	63%	61%	57%	61%	56%	56%	54%	53%	53%	54%
	% Female	37%	39%	43%	39%	44%	44%	46%	47%	47%	46%
Professors											
	Male	102	101	102	103	107	107	109	110	115	114
	Female	24	25	28	31	30	31	31	31	32	38
	Total	126	126	130	134	137	138	140	141	147	152
	% Male	81%	80%	78%	77%	78%	78%	78%	78%	78%	75%
	% Female	19%	20%	22%	23%	22%	22%	22%	22%	22%	25%
Summary											
	Male	229	221	220	226	222	225	219	221	226	229
	% of Total	65%	61%	62%	66%	64%	63%	62%	62%	61%	60%
	Female	124	122	127	126	126	130	132	137	146	155
	% of Total	35%	33%	36%	37%	36%	37%	38%	38%	39%	40%
	Grand Total	352	365	353	343	348	355	351	358	372	384

Source: OIR Faculty and Staff Data

Tenured & Tenure Track Faculty by Race/Ethnicity & Rank

Data Digest 2008-09

(for Fall Semester in Academic Years)

College of Liberal Arts

Rank	Race/Ethnicity	1999	2000	2001	2002	2003	2004	2005	2006	2007	2008
Assistant Professors											
	White/Other	64	57	54	59	55	53	47	54	55	60
	African American	5	6	6	5	5	6	6	3	6	8
	Hispanic	4	4	3	2	1	2	3	2	1	1
	Asian American	0	2	1	6	6	7	6	8	9	8
	American Indian	1	1	1	1	1	0	0	0	0	0
	International	7	8	10	8	10	9	11	12	9	8
	Total Assistant Professors	81	78	75	81	78	77	73	79	80	85
	Underrepresented %	12%	17%	15%	17%	17%	19%	21%	16%	20%	20%
Associate Professors											
	White/Other	124	119	124	117	115	119	116	113	115	114
	African American	5	5	4	6	6	7	7	9	7	8
	Hispanic	3	3	4	5	6	6	5	6	8	8
	Asian American	9	9	7	8	6	7	9	10	12	15
	American Indian	3	1	0	0	0	0	0	0	0	0
	International	2	1	1	1	0	0	0	0	3	2
	Total Associate Professors	146	138	140	137	133	139	137	138	145	147
	Underrepresented %	14%	13%	11%	14%	14%	14%	15%	18%	19%	21%
Professors											
	White/Other	120	120	123	126	126	127	131	132	138	141
	African American	3	3	3	2	3	2	2	2	3	3
	Hispanic	0	0	0	0	2	2	2	2	2	3
	Asian American	3	2	3	5	5	6	4	4	4	5
	American Indian	0	1	1	1	1	1	1	1	0	0
	International	0	0	0	0	0	0	0	0	0	0
	Total Professors	126	126	130	134	137	138	140	141	147	152
	Underrepresented %	5%	5%	5%	6%	8%	8%	6%	6%	6%	7%
Summary											
	White/Other	308	296	301	302	296	299	294	299	308	315
	African American	13	14	13	13	14	15	15	14	16	19
	Hispanic	7	7	7	7	9	10	10	10	11	12
	Asian American	12	13	11	19	17	20	19	22	25	28
	American Indian	4	3	2	2	2	1	1	1	0	0
	International	9	9	11	9	10	9	11	12	12	10
	Total	353	342	345	352	348	354	350	358	372	384
	White/Other	308	296	301	302	296	299	294	299	308	315
	Underrepresented	45	46	44	50	52	55	56	59	64	69
	Total	353	342	345	352	348	354	350	358	372	384
	White/Other %	87%	87%	87%	86%	85%	84%	84%	84%	83%	82%
	Underrepresented %	13%	13%	13%	14%	15%	16%	16%	16%	17%	18%

Faculty and Staff Headcount by Gender

(for Fall Semester in Academic Years)

Data Digest 2008-09

College of Liberal Arts

Classification	Gender	1999	2000	2001	2002	2003	2004	2005	2006	2007	2008
Tenured and Tenure Track Faculty	Female	124	122	127	126	126	130	132	137	146	155
	Male	229	221	220	226	222	225	219	221	226	229
Non-Tenure Track Faculty, Lecturers & Post Docs	Female	87	90	95	93	84	87	110	108	109	122
	Male	41	35	35	39	45	37	46	48	47	42
Administrative/Professional	Female	76	75	78	82	87	85	77	76	71	65
	Male	23	25	25	25	27	29	29	27	29	30
Clerical	Female	94	94	86	91	84	84	80	80	84	89
	Male	-	-	-	1	-	-	-	-	1	-
Service	Female	9	9	12	9	7	11	12	19	15	18
	Male	11	11	11	10	12	11	13	9	8	12
Graduate Student Staff	Female	393	431	465	493	484	488	473	469	470	458
	Male	334	317	283	294	289	307	304	319	321	304
Summary	Female	783	821	863	894	872	885	884	889	895	907
	Male	638	609	574	595	595	609	611	624	632	617
		55%	57%	60%	60%	59%	59%	59%	59%	59%	60%
		45%	43%	40%	40%	41%	41%	41%	41%	41%	40%
Grand Total		1,421	1,430	1,437	1,489	1,467	1,494	1,495	1,513	1,527	1,524

Source: OIR Faculty and Staff Data

Faculty and Staff Headcount by Classification and Race/Ethnicity
 (for Fall Semester in Academic Years, revised for consistency with University Data Digest)

Classification	Race/Ethnicity	1999	2000	2001	2002	2003	2004	2005	2006	2007	2008
Tenured and Tenure Track Faculty	White/Other	308	296	302	302	296	300	295	299	308	315
	African American	13	15	13	13	14	15	15	14	16	19
	Hispanic	7	7	7	7	9	10	10	10	11	12
	Asian American	12	13	12	19	17	20	19	22	25	28
	American Indian	4	3	2	2	2	1	1	1	0	0
	International	9	9	11	9	10	9	11	12	12	10
	Subtotal		353	343	347	352	348	355	351	358	372
Non-Tenure Track Faculty, Lecturers & Post Docs	White/Other	98	96	95	98	100	96	116	118	109	133
	African American	1	0	2	3	2	1	3	3	3	2
	Hispanic	6	8	6	9	10	10	10	13	12	5
	Asian American	4	4	8	6	5	5	8	9	8	7
	American Indian	0	0	0	0	0	0	1	1	1	1
	International	19	17	19	16	12	12	18	12	23	16
	Subtotal		128	125	130	132	129	124	156	156	156
A/P	White/Other	89	94	95	98	101	103	98	96	93	88
	African American	2	2	2	3	4	4	1	2	3	3
	Hispanic	3	2	1	2	2	2	1	1	2	2
	Asian American	5	2	2	2	3	3	2	1	0	1
	American Indian	0	0	1	0	0	0	1	1	1	1
	International	0	0	2	2	4	2	3	2	1	0
	Subtotal		99	100	103	107	114	114	106	103	100
Clerical	White/Other	87	86	79	87	79	79	74	73	78	81
	African American	2	2	1	1	1	1	1	1	1	1
	Hispanic	2	2	1	0	0	0	1	2	2	2
	Asian American	3	4	4	3	3	3	3	3	3	3
	American Indian	0	0	1	1	1	1	1	1	1	2
	International	0	0	0	0	0	0	0	0	0	0
	Subtotal		94	94	86	92	84	84	80	80	85
Service	White/Other	18	18	20	17	16	20	23	25	21	23
	African American	0	0	0	0	0	0	0	0	0	1
	Hispanic	0	0	0	0	0	0	0	0	0	1
	Asian American	1	1	1	1	2	2	2	3	2	3
	American Indian	1	1	1	1	1	0	0	0	0	0
	International	0	0	1	0	0	0	0	0	0	2
	Subtotal		20	20	23	19	19	22	25	28	23
Graduate Students	White/Other	460	460	461	485	482	479	479	501	512	484
	African American	28	24	24	28	28	29	30	40	33	34
	Hispanic	23	21	25	24	17	19	20	17	24	24
	Asian American	20	17	13	15	11	13	14	15	24	28
	American Indian	4	4	3	4	2	2	2	1	2	2
	International	192	222	222	231	233	253	232	214	196	190
	Subtotal		727	748	748	787	773	795	777	788	791
Grand Total		1,421	1,430	1,437	1,489	1,467	1,494	1,495	1,513	1,527	1,524
Total Underrepresented Staff		140	131	128	142	132	140	145	160	173	180
Underrepresented Staff as Percent of Total		11.7%	11.1%	10.8%	11.5%	10.9%	11.5%	11.8%	12.6%	13.4%	13.8%

Source: OIR Faculty and Staff Data

Searches/Hires/Resignations	1999-00	2000-01	2001-02	2002-03	2003-04	2004-05	2005-06	2006-07	2007-08	2008-09
Searches Undertaken	23	27	21	17	23	23	23	26	27	21
Searches Completed*	24	24	24	18	21	24	29	28	28	22*
Number of Men Faculty Hired	15 (63%) #	11 (46%)	15 (63%) #	8 (44%)	11 (52%)	13 (54%)	13 (45%)	15 (54%)	8 (29%)	9 (41%)
Number of Women Faculty Hired	9 (38%) #	13 (54%)	9 (38%) #	10 (56%)	10 (48%)	11 (46%)	16 (55%)	13 (46%)	20 (71%)	13 (59%)
Underrepresented Faculty Hired	8	4	6	5	6	6	6	4	6	7
Resignation/Retirements	28	27	15	20	14	21	18	15	13	16
Men Faculty	19(68%)	16 (59%)	7 (47%)	13 (65%)	10 (71%)	12 (57%)	12 (67%)	8 (53%)	7 (54%)	12 (75%)
Women Faculty	9 (32%)	11 (41%)	8 (53%)	7 (35%)	4 (29%)	9 (43%)	6 (33%)	7 (47%)	6 (46%)	4 (25%)

Figures include deans and department heads.

* including a spousal hire

percentages do not total to 100 due to rounding

Source: Liberal Arts Dean's Office

	TO ASSOCIATE								
	MEN			WOMEN			UNDERREPRESENTED GROUPS		
	<u>Nominated*</u>	<u>Promoted</u>	<u>Success Rate</u>	<u>Nominated</u>	<u>Promoted</u>	<u>Success Rate</u>	<u>Nominated</u>	<u>Promoted</u>	<u>Success Rate</u>
2004-05	6	5	83%	6	6	100%	2	2	100%
2005-06	4	4	100%	5	5	100%	5	5	100%
2006-07	12	10	83%	7	6	86%	5	4	80%
2007-08	5	5	100%	7	7	100%	4	4	100%
2008-09	4	3	75%	4	4	100%	1	1	100%
Total	31	27	87%	29	28	97%	17	16	94%

	TO PROFESSOR								
	MEN			WOMEN			UNDERREPRESENTED GROUPS		
	<u>Nominated</u>	<u>Promoted</u>	<u>Success Rate</u>	<u>Nominated</u>	<u>Promoted</u>	<u>Success Rate</u>	<u>Nominated</u>	<u>Promoted</u>	<u>Success Rate</u>
2004-05	5	5	100%	1	1	100%	0	0	-
2005-06	4	3	75%	1	1	100%	1	0	0%
2006-07	8	8	100%	4	2	50%	0	0	-
2007-08	2	1	50%	6	5	83%	2	2	100%
2008-09	7	6	86%	4	4	100%	3	2	67%
Total	26	23	88%	16	13	81%	6	4	67%

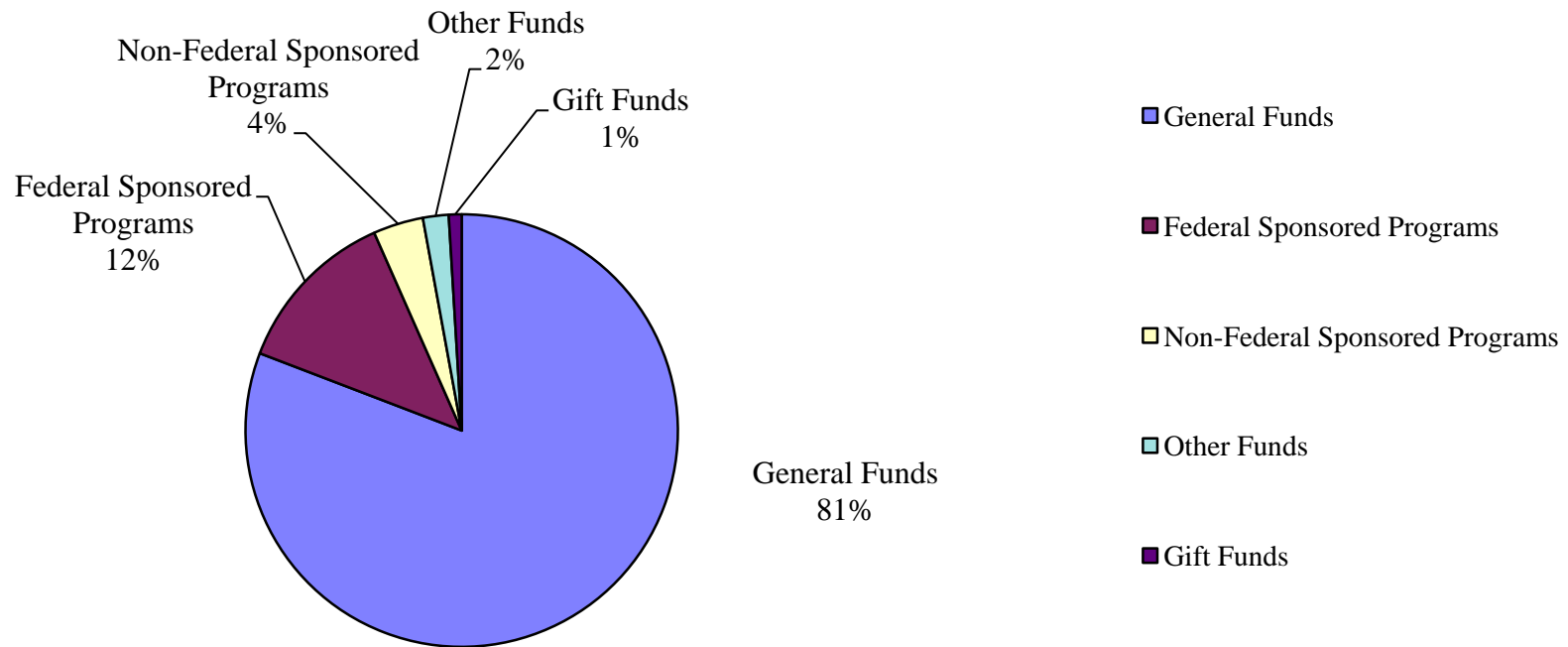
	COMBINED RANK								
	MEN			WOMEN			UNDERREPRESENTED GROUPS		
	<u>Nominated</u>	<u>Promoted</u>	<u>Success Rate</u>	<u>Nominated</u>	<u>Promoted</u>	<u>Success Rate</u>	<u>Nominated</u>	<u>Promoted</u>	<u>Success Rate</u>
2004-05	11	10	91%	7	7	100%	2	2	100%
2005-06	8	7	88%	6	6	100%	6	5	83%
2006-07	20	18	90%	11	8	73%	5	4	80%
2007-08	7	6	86%	13	12	92%	6	6	100%
2008-09	11	9	82%	8	8	100%	4	3	75%
Total	57	50	88%	45	41	91%	23	20	87%

Source: College of Liberal Arts Dean's Office



Source	2002-03	2003-04	2004-05	2005-06	2006-07	2007-08
General Funds	\$41,492,091	\$43,001,862	\$45,689,778	\$48,489,619	\$51,175,069	\$53,885,211
Federal Sponsored Programs	\$6,521,506	\$6,981,549	\$8,122,749	\$6,811,765	\$6,891,698	\$8,371,383
Non-Federal Sponsored Programs	\$2,666,096	\$2,655,745	\$2,361,412	\$2,395,260	\$2,395,100	\$2,500,481
Other Funds	\$1,863,227	\$2,013,498	\$2,135,775	\$1,898,915	\$1,110,995	\$1,281,044
Gift Funds	\$1,277,915	\$478,958	\$640,242	\$971,047	\$654,409	\$639,125
Total	\$53,820,835	\$55,131,612	\$58,949,956	\$60,566,606	\$62,227,271	\$66,677,244

2007-08 Expenditures



2007-08 is the most recent completed fiscal year data

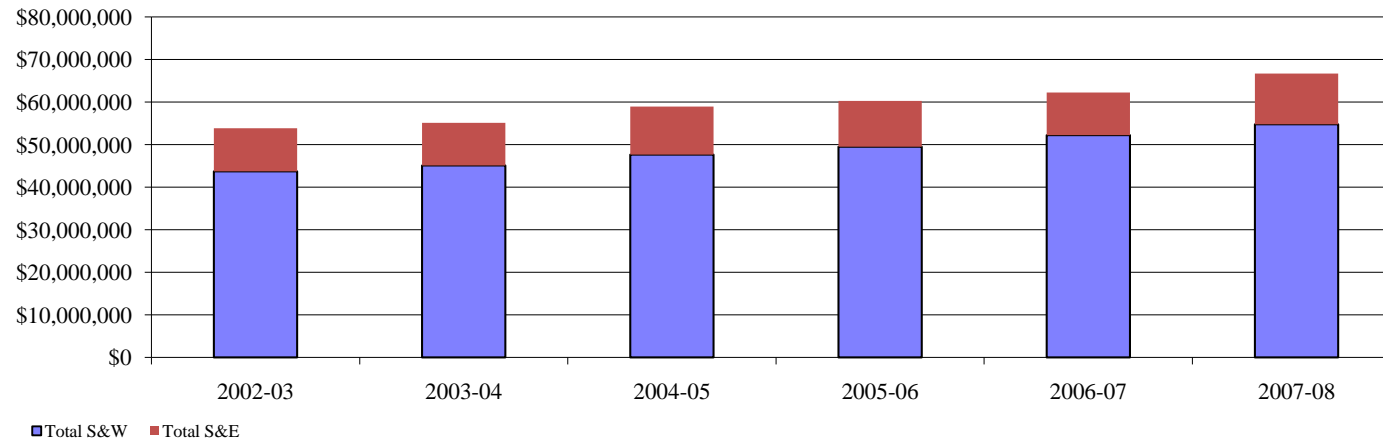
Source: DSS Transaction Summary Data/SAP All Postings Report

Total Annual Expenditures by Category

Data Digest 2008-09

College of Liberal Arts

Category	Source	2002-03	2003-04	2004-05	2005-06	2006-07	2007-08
S&W	General Funds	\$38,870,188	\$40,015,048	\$42,206,064	\$44,392,109	\$46,578,837	\$49,131,928
	Federal Sponsored Programs	\$3,039,154	\$3,405,168	\$3,775,872	\$3,389,367	\$3,806,630	\$3,921,394
	Non-Federal Sponsored Programs	\$1,228,238	\$1,074,096	\$1,069,892	\$923,690	\$1,220,739	\$1,085,578
	Gift Funds	\$153,913	\$120,996	\$141,963	\$206,320	\$206,320	\$192,746
	Other Funds	\$442,145	\$490,534	\$448,616	\$581,608	\$391,830	\$464,192
Total S&W		\$43,733,639	\$45,105,842	\$47,642,407	\$49,493,094	\$52,204,356	\$54,795,838
S&E	General Funds	2,621,903	\$2,986,814	\$3,483,714	\$4,097,510	\$4,596,232	\$4,753,283
	Federal Sponsored Programs	\$3,482,351	\$3,576,381	\$4,346,877	\$3,422,398	\$3,085,068	\$4,449,989
	Non-Federal Sponsored Programs	\$1,437,857	\$1,583,198	\$1,291,520	\$1,471,570	\$1,174,360	\$1,414,903
	Gift Funds	\$1,124,002	\$357,512	\$498,279	\$448,090	\$448,090	\$446,379
	Other Funds	\$1,421,082	\$1,522,964	\$1,687,159	\$1,317,307	\$719,165	\$816,852
Total S&E		\$10,087,194	\$10,026,869	\$11,307,549	\$10,756,875	\$10,022,915	\$11,881,406
Total		\$53,820,833	\$55,132,711	\$58,949,956	\$60,249,969	62,227,271	66,677,244



2007-08 is the most recent completed fiscal year data

Source: DSS Transaction Summary Data/SAP All Postings Report

Total General Fund Expenditures

Data Digest 2008-09

College of Liberal Arts

Category	Type	2002-03	2003-04	2004-05	2005-06	2006-07	2007-08
S&W	Faculty	\$21,978,790	\$22,891,369	\$24,218,800	\$25,827,266	\$27,363,789	\$29,830,128
	Visiting Faculty/Lecturer/etc.	\$2,142,030	\$2,120,352	\$2,342,602	\$2,965,253	\$3,397,720	\$3,051,295
	Post Doctoral					\$10,377	\$93,183
	A/P	\$3,806,890	\$4,034,432	\$4,178,987	\$4,022,047	\$3,579,537	\$3,810,609
	Clerical	\$1,864,765	\$1,837,271	\$1,973,625	\$1,900,719	\$2,087,104	\$2,036,869
	Service	\$333,221	\$344,050	\$344,553	\$347,348	\$445,670	\$311,488
	Graduate Students	\$8,586,539	\$8,605,382	\$8,942,117	\$9,139,924	\$9,653,760	\$9,675,390
	Students	\$157,953	\$182,192	\$205,379	\$189,552	\$40,880	\$71,748
	Unclassified S&W						\$251,218
Total S&W		\$38,870,188	\$40,015,048	\$42,206,064	\$44,392,109	\$46,578,837	\$49,131,928
S&E	Equipment	\$726,103	\$896,379	\$887,509	\$1,434,824	\$1,072,215	\$1,245,200
	Maintenance	\$123,333	\$128,593	\$134,090	\$106,442	\$82,627	\$170,230
	Postage & Shipping	\$65,758	\$88,382	\$87,572	\$72,211	\$77,186	\$5,395
	Printing & Office Supplies	\$416,665	\$488,393	\$544,589	\$536,629	\$507,375	\$671,672
	Rental & Maintenance	\$41,879	\$95,464	\$82,755	\$73,827	\$92,956	\$11,408
	Scholarships & Awards	\$36,010	\$4,382	\$35,638	\$51,351	\$55,884	\$73,979
	Services & Fees	\$340,271	\$246,181	\$293,488	\$361,109	\$495,123	\$616,223
	Supplies	\$100,161	\$56,972	\$89,079	\$223,393	\$174,702	\$225,790
	Telephone & Tolls	\$336,027	\$356,592	\$376,214	\$414,005	\$419,553	\$496,365
	Travel	\$435,696	\$625,476	\$952,780	\$823,719	\$1,461,613	\$1,140,722
	Other S&E					\$156,998	\$96,299
Total S&E		\$2,621,903	\$2,986,814	\$3,483,714	\$4,097,510	\$4,596,232	\$4,753,283
Total		\$41,492,091	\$43,001,862	\$45,689,778	\$48,489,619	\$51,175,069	\$53,885,211

2007-08 is the most recent completed fiscal year data

Source: DSS Transaction Summary Data/SAP All Postings Report

Total Gift Fund Expenditures

Data Digest 2008-09

College of Liberal Arts

Category	Type	2002-03	2003-04	2004-05	2005-06	2006-07	2007-08
S&W	Faculty	\$38,772	\$30,489	\$32,056	\$66,715	\$89,591	\$82,667
	Visiting Faculty			\$2,635	\$10,000		
	A/P	\$16,904	\$26,602	\$34,249	\$21,856	\$23,260	\$27,864
	Clerical	\$5,991	\$7,096	\$5,009	\$5,233	\$6,364	\$351
	Service & Other	\$15,606	\$4,614	\$14,987	\$18,200	\$26,286	\$1,316
	Graduate Students	\$45,647	\$27,577	\$22,540	\$19,537	\$19,015	\$28,785
	Students	\$910	\$684	\$4,560	\$25,828	\$628	\$5,800
	Fringe Benefits	\$30,085	\$23,934	\$25,927	\$36,130	\$41,175	\$41,320
	Unclassified S&W						\$4,643
Total S&W		\$153,913	\$120,996	\$141,963	\$203,499	\$206,319	\$192,746
S&E	Equipment	\$17,623	\$34,137	\$194,858	\$35,347	\$141,260	\$31,054
	Maintenance	\$4,732	\$12,677	\$3,219	\$2,765	\$8,700	\$1,352
	Postage & Shipping	\$24,952	\$5,756	\$7,024	\$10,654	\$12,392	\$10,873
	Printing & Office Supplies	\$86,927	\$33,776	\$35,241	\$49,430	\$40,151	\$36,668
	Rental & Maintenance	\$2,905	\$5,277	\$2,406	\$4,868	\$2,376	\$6,861
	Scholarships & Awards	-\$1,600	\$26,589	\$30,468	\$11,173	\$18,712	\$77,994
	Services & Fees	\$28,471	\$48,579	\$42,142	\$70,670	\$41,631	\$47,710
	Supplies	\$5,612	\$5,162	\$11,617	\$25,519	\$18,100	\$32,571
	Telephone & Tolls	\$4,374	\$4,396	\$5,360	\$7,311	\$6,505	\$6,552
	Travel	\$54,412	\$79,344	\$83,063	\$106,280	\$129,757	\$179,981
	Other S&E	\$895,594	\$101,819	\$82,881	\$443,531	\$28,506	\$14,763
	Total S&E		\$1,124,002	\$357,512	\$498,279	\$767,548	\$448,090
Total		\$1,277,915	\$478,508	\$640,242	\$971,047	\$654,409	\$639,125

Note: Fund 707 is excluded from data

2007-08 is the most recent completed fiscal year data

Source: DSS Transaction Summary Data/SAP All Postings Report

Total Sponsored Program Expenditures

Data Digest 2008-09

College of Liberal Arts

Category	Type	2001-02	2002-03	2003-04	2004-05	2005-06	2006-07	2007-08
S&W	Faculty	\$1,146,659	\$1,405,000	\$1,369,454	\$1,495,475	\$1,425,745	\$1,959,535	\$2,077,847
	Visiting Faculty/Lecturer/etc.	\$9,939	\$18,600	\$11,246	\$18,850		\$10,565	\$3,514
	Post Doctoral	\$19,578	\$9,800	\$24,470	\$16,396	\$17,107	\$71,561	\$137,111
	A/P	\$233,499	\$294,246	\$500,472	\$492,801	\$398,796	\$288,775	\$287,607
	Clerical	\$2,723	\$16,028	\$10,451	\$2,460	\$2,023	\$10,306	\$16,620
	Service	\$112,600	\$136,042	\$174,203	\$175,409	\$177,097	\$264,628	\$234,542
	Graduate Students	\$1,369,720	\$1,389,595	\$1,345,209	\$1,454,125	\$1,285,742	\$1,414,825	\$1,094,509
	Students*	\$95,844	\$188,785	\$160,510	\$193,258	\$151,524	\$1,148	\$40,765
	Fringe Benefits	\$645,180	\$807,937	\$879,449	\$993,134	\$855,023	\$1,005,646	\$1,055,661
	Instructor		\$1,360	\$3,800	\$3,856	\$0	\$381	
	Unclassified S&W							
Total S&W		\$3,635,742	\$4,267,393	\$4,479,264	\$4,845,764	\$4,313,057	\$5,027,370	\$5,006,972
S&E	Equipment	\$347,502	\$308,293	\$264,185	\$370,471	\$328,830	\$89,415	\$388,560
	Maintenance	\$10,350	\$5,232	\$15,086	\$7,387	\$5,391	\$3,989	\$8,480
	Postage & Shipping	\$9,113	\$13,129	\$55,009	\$26,316	\$10,510	\$8,978	\$10,881
	Printing & Office Supplies	\$56,426	\$57,342	\$113,560	\$63,803	\$31,057	\$22,378	\$40,754
	Rental & Maintenance	\$744	\$14,553	\$18,413	\$22,624	\$22,468	\$12,172	\$12,576
	Scholarships & Awards	\$905,967	\$967,159	\$1,316,246	\$1,184,587	\$1,245,140	\$911,690	\$1,052,134
	Services & Fees	\$795,363	\$1,542,535	\$1,159,856	\$1,444,783	\$883,010	\$721,338	\$1,160,548
	Supplies	\$141,916	\$184,821	\$171,650	\$190,620	\$254,823	\$207,802	\$425,955
	Telephone & Tolls	\$6,398	\$6,777	\$5,018	\$7,582	\$6,122	\$5,326	\$3,784
	Travel	\$139,653	\$226,118	\$296,016	\$380,863	\$239,151	\$188,375	\$398,068
	Other S&E	\$18,407	\$72,921	\$26,957	\$37,296	\$49,501	\$51,181	\$26,525
	F&A	\$1,351,157	\$1,521,326	\$1,717,581	\$1,902,066	\$1,817,965	\$2,036,784	\$2,336,627
Total S&E		\$3,782,996	\$4,920,206	\$5,159,577	\$5,638,398	\$4,893,968	\$4,259,428	\$5,864,892
Total		\$7,418,738	\$9,187,599	\$9,638,841	\$10,484,162	\$9,207,025	\$9,286,798	\$10,871,864

*Student wages included in Service category with conversion to SAP in 2007

2007-08 is the most recent completed fiscal year data

Source: DSS Transaction Summary Data/SAP All Postings Report

Expenditures by Type & Source

Data Digest 2008-09

College of Liberal Arts

Category	Type	General Funds	Federal Sponsored Programs	Non-Federal Sponsored Programs	Gift Funds	Other Funds	Total 2007-08
S&W	Faculty	\$29,830,128	\$1,772,125	\$305,722	\$82,667	\$100,464	\$32,091,106
	Visiting Faculty/Lecturer	\$3,051,295	\$2,514	\$1,000		\$1,000	\$3,055,809
	Post Doctoral	\$93,183	\$137,111			\$18,167	\$248,461
	A/P	\$3,810,609	\$259,175	\$28,432	\$27,864	\$37,482	\$4,163,562
	Clerical	\$2,036,869	\$2,323	\$14,297	\$351	\$70,706	\$2,124,546
	Service	\$311,488	\$214,827	\$19,715	\$1,316	\$3,398	\$550,744
	Graduate Students	\$9,675,390	\$529,292	\$565,217	\$28,785	\$10,729	\$10,809,413
	Students	\$71,748	\$25,814	\$14,951	\$5,800	\$47,791	\$166,104
	Fringe Benefits		\$930,710	\$124,951	\$41,320	\$101,563	\$1,198,544
	Unclassified S&W	\$251,218	\$47,503	\$11,293	\$4,643	\$72,892	
Total S&W		\$49,131,928	\$3,921,394	\$1,085,578	\$192,746	\$464,192	\$54,795,838
S&E	Equipment	\$1,245,200	\$382,491	\$6,069	\$31,054	\$20,748	\$1,685,562
	Maintenance	\$170,230	\$8,420	\$60	\$1,352	\$5,802	\$185,864
	Postage & Shipping	\$5,395	\$8,491	\$2,390	\$10,873	\$6,487	\$33,636
	Printing & Office Supplies	\$671,672	\$26,370	\$14,384	\$36,668	\$53,929	\$803,023
	Rental & Maintenance	\$11,408	\$11,052	\$1,524	\$6,861	\$13,260	\$44,105
	Scholarships & Awards	\$73,979	\$141,068	\$911,066	\$77,994	\$750	\$1,204,857
	Services & Fees	\$616,223	\$973,712	\$186,836	\$47,710	\$288,543	\$2,113,024
	Supplies	\$225,790	\$358,784	\$67,171	\$32,571	\$345,313	\$1,029,629
	Telephone & Tolls	\$496,365	\$1,983	\$1,801	\$6,552	\$25,606	\$532,307
	Travel	\$1,140,722	\$277,104	\$120,964	\$179,981	\$54,236	\$1,773,007
	Other S & E	\$96,299	\$7,251	\$19,274	\$14,763	\$2,178	\$139,765
	F&A			\$2,253,263	\$83,364		\$2,336,627
	Total S&E		\$4,753,283	\$4,449,989	\$1,414,903	\$446,379	\$816,852
Total		\$53,885,211	\$8,371,383	\$2,500,481	\$639,125	\$1,281,044	\$66,677,244

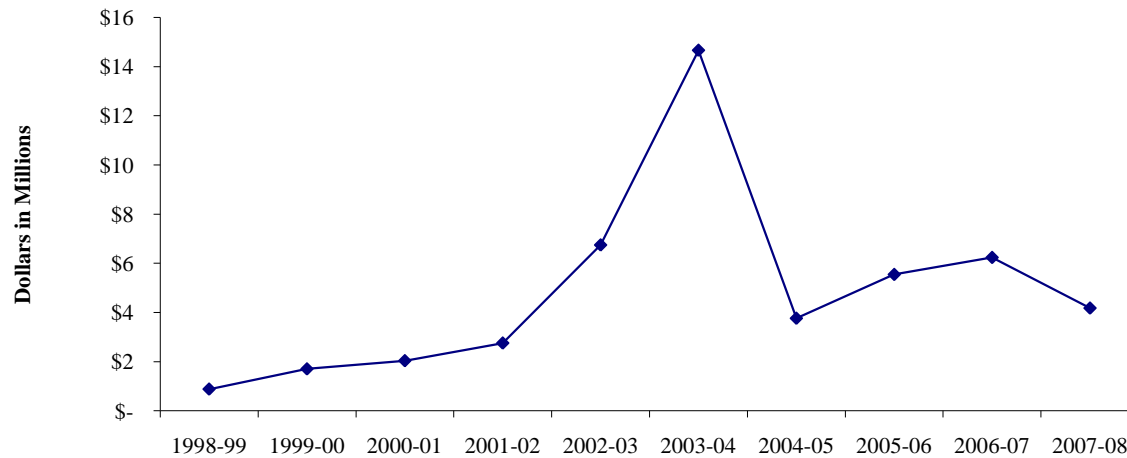
2007-08 is the most recent completed fiscal year data

Source: DSS Transaction Summary Data/SAP All Postings Report

Gift Category	1998-99	1999-00	2000-01	2001-02	2002-03	2003-04	2004-05	2005-06	2006-07	2007-08
Cash/Securities	\$ 647,177	\$ 903,392	\$ 1,573,028	\$ 1,435,361	\$ 6,009,492	\$ 2,251,133	\$ 3,085,543	\$ 3,098,494	\$ 2,650,065	\$ 1,330,702
Real Estate	\$ -	\$ -	\$ -	\$ -	\$ -	\$ 2,548,509	\$ -	\$ -	\$ -	\$ -
Gifts-in-Kind	\$ 36,661	\$ 78,944	\$ 80,389	\$ 100,225	\$ 11,155	\$ 55,824	\$ 502,367	\$ 333,986	\$ 45,100	\$ 11,491
Irrevocable Deferred	\$ 200,000	\$ 342,909	\$ 17,545	\$ 67,924	\$ 470,798	\$ 5,000,000	\$ 53,150	\$ 52,861	\$ 3,833,240	\$ 817,795
Pledge Balances		\$ 379,705	\$ 367,904	\$ 1,272,017	\$ 451,188	\$ 4,928,675	\$ 2,248,069	\$ 3,370,645	\$ 392,861	\$ 2,207,120
Less: Prior Year										
Pledge Payments				\$ (119,413)	\$ (198,530)	\$ (122,707)	\$ (2,125,579)	\$ (1,311,364)	\$ (685,013)	\$ (189,176)
Total	\$ 883,838	\$ 1,704,950	\$ 2,038,866	\$ 2,756,114	\$ 6,744,102	\$ 14,661,434	\$ 3,763,550	\$ 5,544,622	\$ 6,236,253	\$ 4,177,932

FY2001-02 thru Present: Campaign for Purdue counting periods; prior year pledge payments of The Campaign for Purdue were deducted from total production to accurately reflect fund-raising totals during the campaign.

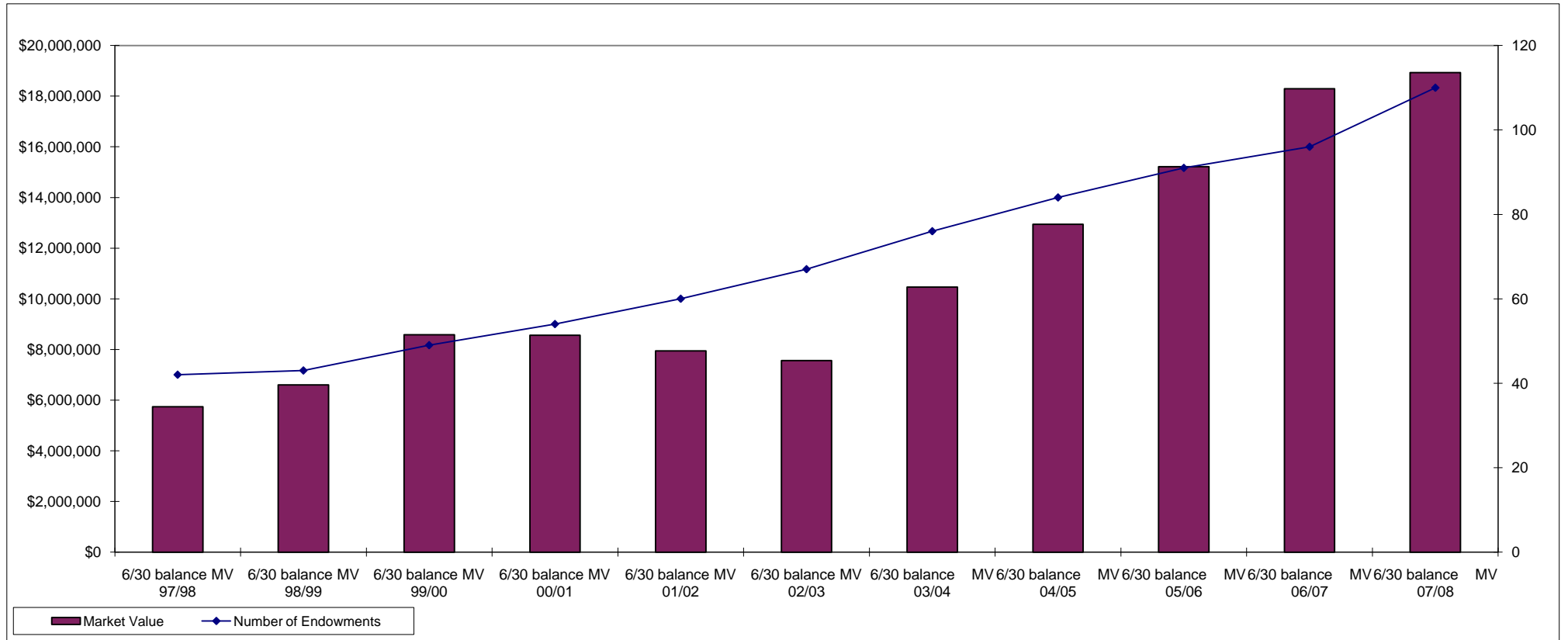
Trend in Giving 1998-99 through 2007-08



2007-08 is the most recent completed fiscal year data

Source: University Development Office

Endowments & CYP Investments	6/30 balance MV 97/98	6/30 balance MV 98/99	6/30 balance MV 99/00	6/30 balance MV 00/01	6/30 balance MV 01/02	6/30 balance MV 02/03	6/30 balance MV 03/04	6/30 balance MV 04/05	6/30 balance MV 05/06	6/30 balance MV 06/07	6/30 balance MV 07/08
Market Value	\$5,741,134	\$6,600,470	\$8,577,946	\$8,562,575	\$7,946,005	\$7,558,333	\$10,465,338	\$12,943,230	\$15,211,979	\$18,293,525	\$18,932,388
Number of Endowments	42	43	49	54	60	67	76	84	91	96	110

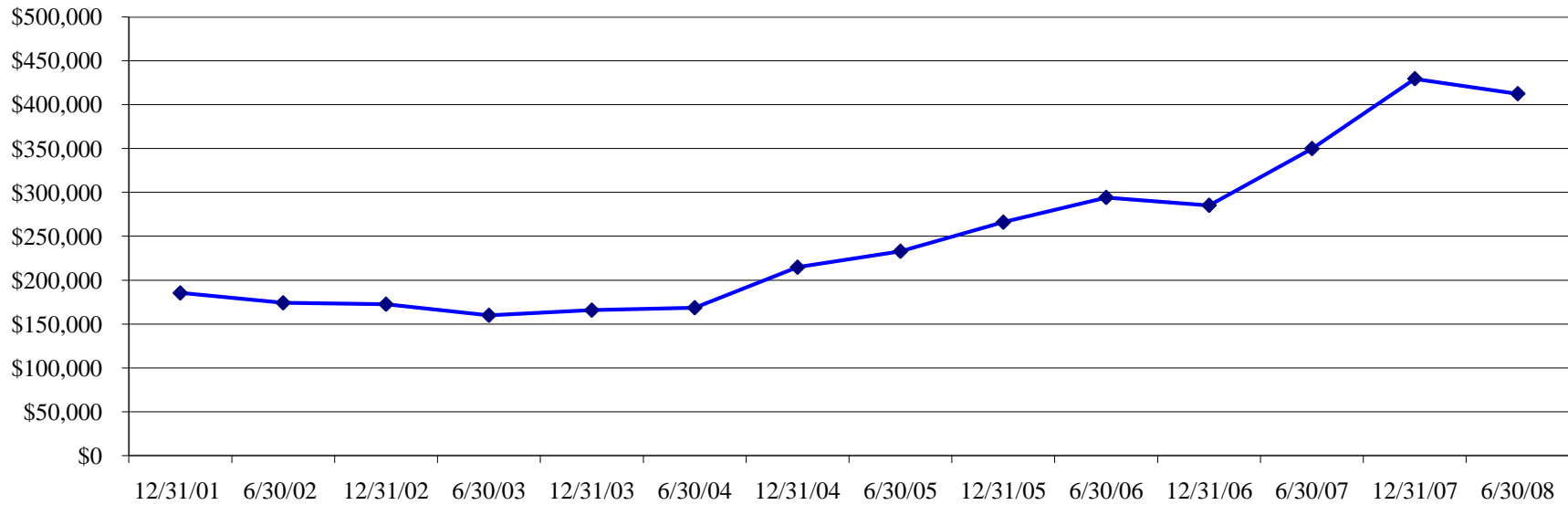


2007-08 is the most recent completed fiscal year data

Source: Semi-annual Endowment Reports

	01/02		02/03		03/04		04/05		05/06		06/07		07/08	
Endowments & CYP Investments	12/31/01	6/30/02	12/31/02	6/30/03	12/31/03	6/30/04	12/31/04	6/30/05	12/31/05	6/30/06	12/31/06	6/30/07	12/31/07	6/30/08
Payments	\$185,410	\$174,163	\$172,604	\$159,994	\$165,822	\$168,595	\$214,725	\$232,885	\$266,030	\$294,200	\$285,296	\$349,909	\$429,516	\$412,427

Income Payments
(6 month period)



2007-08 is the most recent completed fiscal year data

Source: Semi-annual Endowment Reports

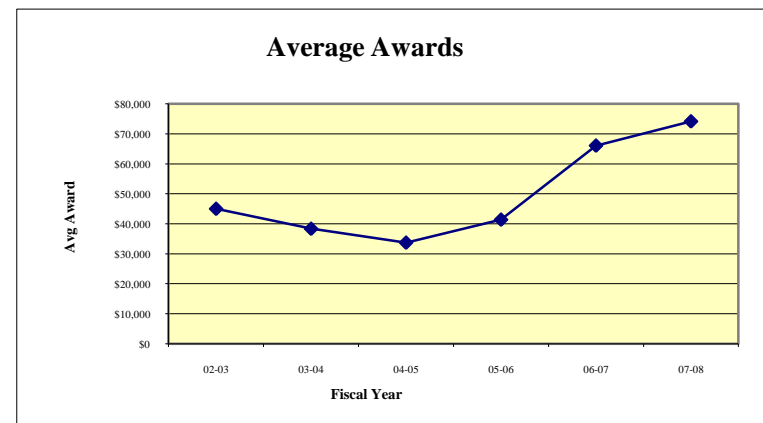
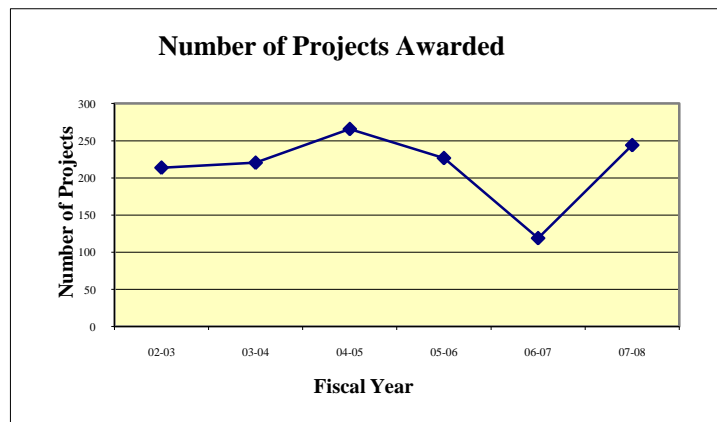
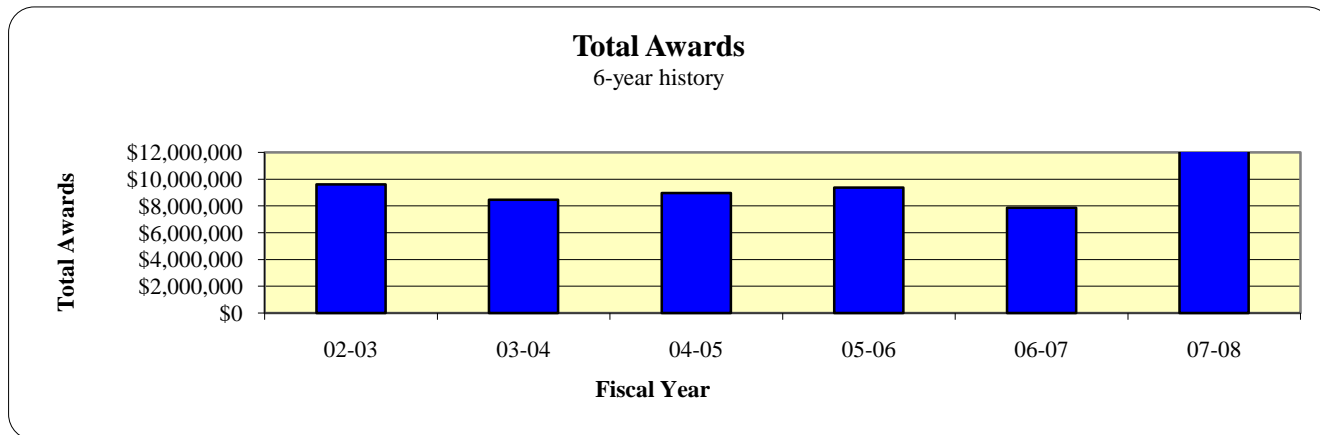


Total Annual Sponsored Program Awards

2008-09 Data Digest

College of Liberal Arts

	02-03	03-04	04-05	05-06	06-07	07-08
Grant Projects -- 6-year history						
Total Awards	\$9,621,313	\$8,456,283	\$8,964,772	\$9,383,616	\$7,863,859	\$18,095,993
Number of Projects	214	220	266	227	119	244
Avg Award	\$45,023	\$38,375	\$33,747	\$41,407	\$66,083	\$74,164



07-08 is the most recent completed fiscal year data

Source: Sponsored Program Services

Total Sponsored Program Awards by Sponsor

2008-09 Data Digest

College of Liberal Arts

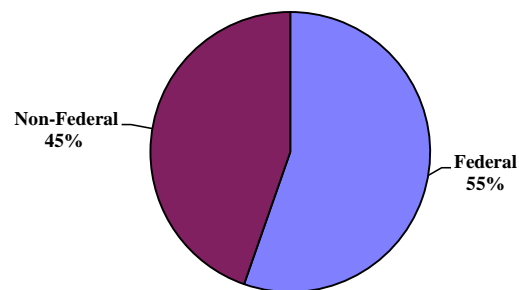
Sponsor	1998-99	1999-00	2000-01	2001-02	2002-03	2003-04	2004-05	2005-06	2006-07	2007-08
DHHS	\$2,127,056	\$3,100,891	\$3,499,622	\$5,559,209	\$5,504,768	\$5,617,424	\$5,158,981	\$5,093,953	\$5,222,221	\$9,919,667
NSF	\$214,266	\$179,923	\$610,554	\$1,169,615	\$495,700	\$505,505	\$863,043	\$954,323	\$629,849	\$2,284,516
DOEd*		\$2,000	\$3,000	\$2,000	\$246,852	\$76,940				
DOD	\$12,000	\$823,627	\$821,016	\$842,355	\$864,449	\$130,602	\$266,803	\$659,874	\$615,843	\$354,481
Other Federal	\$174,965	\$275,262	\$761,477	\$217,150	\$209,407	\$18,579	\$172,338	\$90,941	\$42,850	\$844,801
Total Federal	\$2,528,287	\$4,381,703	\$5,695,669	\$7,790,329	\$7,321,176	\$6,349,050	\$6,461,165	\$6,799,091	\$6,510,763	\$13,403,465
Industrial	\$1,044,840	\$254,047	\$287,895	\$1,217,718	\$589,895	\$196,752	\$693,625	\$822,464	\$437,026	\$1,289,692
ST,LCL,FGN Govt's, & Misc.**	\$994,660	\$1,581,678	\$1,425,786	\$1,088,765	\$1,710,242	\$1,910,481	\$1,809,982	\$1,762,061		
State/LCL Govt.									\$208,250	\$1,019,581
FGN Govt									\$106,250	\$15,101
Misc.									\$601,570	\$2,368,155
Total Non-Federal	\$2,039,500	\$1,835,725	\$1,713,681	\$2,306,483	\$2,300,137	\$2,107,233	\$2,503,607	\$2,584,525	\$1,353,096	\$4,692,529
Total Liberal Arts	\$4,567,787	\$6,217,428	\$7,409,350	\$10,096,812	\$9,621,313	\$8,456,283	\$8,964,772	\$9,383,616	\$7,863,859	\$18,095,994

*Beginning with 2006-07, DOEd awards included in "Other Federal" Category

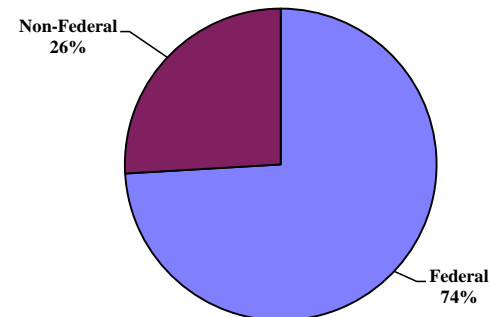
**ST,LCL, FGN Govt's, Other PU, Misc included in one category through 2005-06
2007-08 is the most recent completed fiscal year data

Source: OnePurdue Business Warehouse

1998-99 Sponsored Program Awards

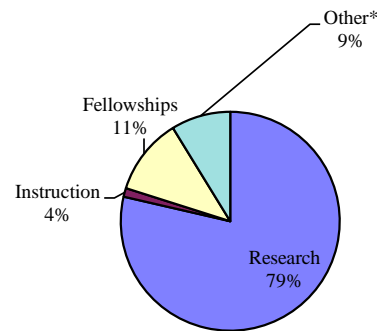


2007-08 Sponsored Program Awards



	1998-99	1999-00	2000-01	2001-02	2002-03	2003-04	2004-05	2005-06	2006-07	2007-08
Awards by Program										
Research	\$3,253,380	\$4,515,660	\$6,091,230	\$8,854,472	\$7,004,330	\$6,109,017	\$6,476,713	\$7,386,882	\$7,048,453	\$14,224,669
Instruction	\$212,345	\$564,130	\$163,133	\$475,018	\$245,200	\$472,580	\$361,336	\$6,450	\$235,383	\$232,333
Fellowships	\$415,091	\$948,073	\$736,570	\$520,577	\$1,257,572	\$1,071,315	\$1,115,979	\$1,030,681	\$111,784	\$2,052,520
Other*	\$686,971	\$189,565	\$418,417	\$246,745	\$1,114,211	\$803,371	\$1,010,744	\$959,603	\$468,238	\$1,586,471
Total Awards	\$4,567,787	\$6,217,428	\$7,409,350	\$10,096,812	\$9,621,313	\$8,456,283	\$8,964,772	\$9,383,616	\$7,863,858	\$18,095,993

2007-08 Sponsored Program Awards



* Other includes: Service, Outreach, and Engagement
 2007-08 is the most recent completed fiscal year data

Source: OnePurdue Business Warehouse

Total Sponsored Program Awards by Department

2008-09 Data Digest

College of Liberal Arts

Department	1998-99	1999-00	2000-01	2001-02	2002-03	2003-04	2004-05	2005-06	2006-07	2007-08
Administration	\$3,650	\$20,000	\$26,775	\$27,742	\$14,160	\$32,014	\$102,804	\$29,039	\$20,635	\$19,430
Afro-American Studies									\$2,500	
American Studies	\$112,416	\$174,992	\$96,314	\$94,469	\$126,894	\$143,282	\$195,438	\$110,233		\$44,368
Communication	\$75,001	\$102,241	\$84,762	\$52,902	\$164,186	\$121,329	\$120,522	\$348,586	\$435,716	\$3,799,956
Comparative Literature	\$20,250	\$31,688	\$32,827	\$23,257	\$46,137	\$52,156	\$51,372	\$59,613		\$23,933
English	\$117,280	\$220,470	\$266,567	\$194,110	\$245,768	\$452,917	\$356,236	\$445,999	\$346,125	\$449,337
Foreign Languages and Literatures	\$176,683	\$122,117	\$71,412	\$200,665	\$100,043	\$161,701	\$272,671	\$114,479	\$168,219	\$71,691
Health and Kinesiology	\$156,760	\$204,851	\$273,277	\$315,318	\$576,870	\$534,603	\$737,483	\$563,826	\$235,360	\$527,919
History	\$56,150	\$238,796	\$147,343	\$153,593	\$188,946	\$225,808	\$118,581	\$140,983	\$61,969	\$165,408
Linguistics					\$80,865	\$104,457	\$89,305	\$96,331		\$89,590
Philosophy	\$84,330	\$115,627	\$103,362	\$110,014	\$122,317	\$164,050	\$108,938	\$160,215	\$92,420	\$496,847
Political Science	\$120,575	\$266,295	\$204,605	\$93,674	\$295,011	\$109,089	\$128,280	\$242,019	\$44,800	\$361,749
Psychological Sciences	\$1,983,669	\$2,380,410	\$3,763,095	\$4,271,516	\$4,377,312	\$3,085,418	\$3,697,586	\$3,562,489	\$3,233,795	\$5,466,280
Sociology and Anthropology	\$580,615	\$522,159	\$286,226	\$768,188	\$586,974	\$498,485	\$681,427	\$459,512	\$145,634	\$1,866,392
Speech, Language, and Hearing Sciences	\$1,045,117	\$1,782,565	\$1,964,222	\$3,747,931	\$2,686,619	\$2,749,162	\$2,294,783	\$3,037,992	\$3,073,877	\$4,693,107
Visual and Performing Arts	\$35,291	\$19,467	\$73,355	\$17,159	\$9,211	\$21,812	\$9,346	\$12,300	\$2,809	\$13,252
Women's Studies		\$15,750	\$15,208	\$26,274						\$6,732
Total	\$4,567,787	\$6,217,428	\$7,409,350	\$10,096,812	\$9,621,313	\$8,456,283	\$8,964,772	\$9,383,616	\$7,863,859	\$18,095,991

Department	1998-99	1999-00	2000-01	2001-02	2002-03	2003-04	2004-05	2005-06	2006-07	2007-08
Administration	3.00	1.00	0.20	0.16	0.05	6.00	5.10	3.00	2.00	3.00
Afro-American Studies									1.00	
American Studies	10.00	18.00	15.00	9.00	10.20	12.25	22.00	9.00		3.00
Communication	6.14	9.34	9.20	6.20	11.00	11.00	14.00	16.00	11.00	34.79
Comparative Literature	2.00	4.00	5.00	2.00	4.00	6.00	5.00	6.00		2.00
English	8.00	21.00	24.00	15.40	12.50	19.75	28.00	21.00	10.00	29.00
Foreign Languages and Literatures	7.83	12.40	9.33	5.40	7.00	9.20	13.40	10.66	5.50	4.50
Health and Kinesiology	14.02	21.15	17.25	15.75	25.25	23.67	15.70	27.10	15.30	15.95
History	6.00	15.00	16.00	11.00	11.00	15.00	12.00	9.00	4.00	10.00
Linguistics					6.00	7.00	11.00	7.00		5.05
Philosophy	7.50	11.00	12.00	9.25	12.00	14.00	14.00	12.00	7.00	12.80
Political Science	12.20	19.38	16.00	8.00	8.00	4.49	9.10	12.50	4.33	6.13
Psychological Sciences	43.58	52.66	43.84	50.25	52.43	41.95	53.55	45.56	30.13	49.19
Sociology and Anthropology	14.00	26.75	23.82	19.44	23.87	17.22	27.00	12.00	7.10	24.00
Speech, Language, and Hearing Sciences	16.50	24.30	30.10	24.40	27.40	28.83	31.80	33.80	20.95	41.45
Visual and Performing Arts	6.00	3.00	4.00	3.00	3.00	4.00	4.00	2.00	1.00	2.00
Women's Studies		3.00	1.00	2.00						0.90
Total	156.77	241.98	226.74	181.25	213.70	220.36	265.65	226.62	119.31	243.76

* Fractional number of projects depicts a split of projects among departments.
2007-08 is the most recent completed fiscal year data

Source: Sponsored Program Services

Total Sponsored Program Proposals by Sponsor

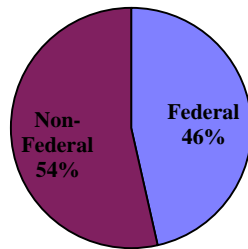
2008-09 Data Digest

College of Liberal Arts

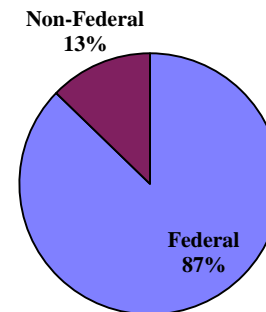
Sponsor	1998-99	1999-00	2000-01	2001-02	2002-03	2003-04	2004-05	2005-06	2006-07	2007-08
DHHS	\$5,081,106	\$10,110,307	\$6,645,241	\$8,089,183	\$25,227,743	\$21,618,678	\$27,100,773	\$36,837,088	\$50,208,858	\$18,396,592
NSF	\$2,346,026	\$4,856,082	\$3,997,313	\$3,316,697	\$6,660,609	\$3,954,935	\$5,641,435	\$7,894,765	\$6,040,050	\$12,090,605
DOEd		\$437,313	\$566,461	\$681,026	\$1,444,675		\$2,552,028	\$1,355,076		
DOD	\$12,000	\$3,772,519	\$79,985			\$1,254,101	\$985,822	\$209,641	\$1,628,089	\$814,687
Other Federal	\$415,163	\$1,034,582	\$629,704	\$180,678	\$13,217,273	\$2,119,685	\$2,724,116	\$1,112,145	\$1,869,694	\$2,883,738
Total Federal	\$7,854,295	\$20,210,803	\$11,918,704	\$12,267,584	\$46,550,300	\$28,947,399	\$39,004,174	\$47,408,715	\$59,746,691	\$34,185,622
Foundation/Industrial	\$8,938,642	\$317,605	\$1,116,176	\$1,490,122	\$1,169,786	\$3,759,999	\$1,918,748	\$1,491,922	\$1,621,014	\$3,517,123
ST,LCL,FGN Govt's, & Misc.*	\$111,675	\$157,241	\$83,500	\$209,933	\$309,844	\$1,987,526	\$178,982	\$259,878		
State/Local Gov't									\$670,495	\$1,205,257
FGN Gov't									\$2,591,389	\$256,062
Other PU SPS										\$21,409
Misc.									\$476,694	
Total Non-Federal	\$9,050,317	\$474,846	\$1,199,676	\$1,700,055	\$1,479,630	\$5,747,525	\$2,097,730	\$1,751,800	\$4,882,898	\$4,999,851
Total Liberal Arts	\$16,904,612	\$20,685,649	\$13,118,380	\$13,967,639	\$48,029,930	\$34,694,924	\$41,101,904	\$49,160,515	\$64,629,589	\$39,185,473

*ST,LCL, FGN Govt's, Other PU, Misc included in one category through 2005-06
2007-08 is the most recent completed fiscal year data

1998-99 Sponsored Program Proposals



2006-07 Sponsored Program Proposals



Source: OnePurdue Business Warehouse

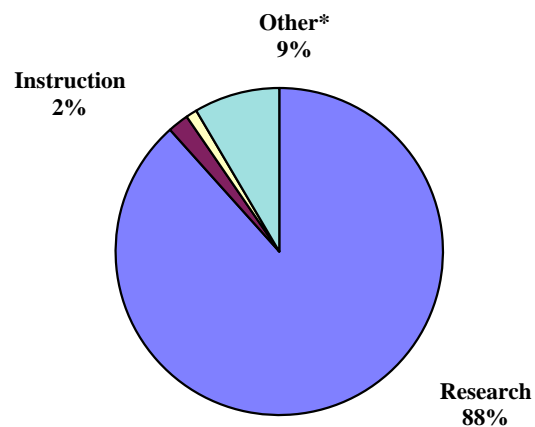
Total Sponsored Program Proposals by Activity Type

2008-09 Data Digest

College of Liberal Arts

	1998-99	1999-00	2000-01	2001-02	2002-03	2003-04	2004-05	2005-06	2006-07	2007-08
Proposals by Program										
Research	\$15,507,350	\$17,348,023	\$11,769,999	\$12,790,309	\$31,718,651	\$28,118,643	\$35,814,518	\$44,069,695	\$58,775,549	\$34,624,085
Instruction	\$397,346	\$2,427,051	\$272,836	\$729,530	\$409,839	\$1,580,412	\$2,581,315	\$3,308,839	\$852,008	\$808,759
Fellowships	\$67,528	\$233,047	\$553,782	\$40,753	\$9,130	\$248,701	\$63,025	\$237,225	\$52,361	\$431,814
Other*	\$932,388	\$677,528	\$521,763	\$407,047	\$15,892,310	\$4,747,168	\$2,643,046	\$1,544,756	\$5,426,363	\$3,320,815
Total Proposals	\$16,904,612	\$20,685,649	\$13,118,380	\$13,967,639	\$48,029,930	\$34,694,924	\$41,101,904	\$49,160,515	\$65,106,281	\$39,185,473

2007-08 Sponsored Program Proposals



* Other includes: Service, Outreach, and Engagement
2007-08 is the most recent completed fiscal year data

Source: OnePurdue Business Warehouse

Total Sponsored Program Proposals by Department

2008-09 Data Digest

College of Liberal Arts

Department	1998-99	1999-00	2000-01	2001-02	2002-03	2003-04	2004-05	2005-06	2006-07	2007-08
Administration			\$140,850	\$32,984	\$280,661	\$347,902	\$42,457	\$39,626	\$51,386	\$14,500
American Studies				\$4,662	\$750					
Anthropology										\$117,028
Communication	\$167,342	\$207,797	\$697,114	\$52,856	\$1,263,558	\$732,949	\$1,333,706	\$5,646,577	\$3,259,585	\$3,235,302
English	\$263,983	\$428,741	\$640,958	\$266,922	\$468,568	\$1,107,015	\$812,881	\$0	\$889,291	\$1,692,264
Foreign Languages and Literatures	\$81,038	\$349,763	\$26,537	\$342,411	\$25,974	\$1,000	\$1,064,373	\$156,298	\$651,207	\$18,928
Health and Kinesiology	\$511,111	\$159,875	\$388,087	\$631,189	\$752,478	\$756,941	\$1,684,410	\$4,252,799	\$2,458,905	\$3,851,430
History	\$6,894,716	\$418,738	\$86,520	\$141,471	\$165,191	\$110,199	\$63,425	\$336,500	\$234,696	
Linguistics										\$569,859
Philosophy	\$45,750	\$2,000	\$2,800		\$12,907,179	\$3,581,310	\$756,778	\$225,003	\$2,431,360	\$475,416
Political Science	\$102,377	\$313,122	\$45,065	\$304,155	\$270,890	\$211,396	\$2,131,345	\$1,468,121	\$299,482	\$120,137
Psychological Sciences	\$4,803,590	\$11,699,603	\$6,573,643	\$4,560,071	\$19,071,191	\$16,165,907	\$15,516,146	\$20,168,100	\$30,624,714	\$14,151,966
Sociology*	\$2,096,031	\$305,707	\$747,772	\$1,367,519	\$2,089,398	\$1,562,553	\$4,455,548	\$1,101,087	\$7,262,154	\$6,961,791
Speech, Language, and Hearing Sciences	\$1,931,674	\$6,662,862	\$3,645,226	\$6,192,222	\$10,690,408	\$9,931,614	\$13,136,008	\$15,726,099	\$16,721,780	\$7,798,251
Student Services and Counseling		\$17,286								
Visual and Performing Arts	\$7,000	\$97,655	\$123,107	\$71,177	\$43,687	\$25,000	\$30,500	\$40,305	\$65,000	\$165,148
Women's Studies		\$22,500	\$701			\$161,138	\$74,327		\$156,720	\$13,455
Total	\$16,904,612	\$20,685,649	\$13,118,380	\$13,967,639	\$48,029,933	\$34,694,924	\$41,101,904	\$49,160,515	\$65,106,280	\$39,185,475

Department	1998-99	1999-00	2000-01	2001-02	2002-03	2003-04	2004-05	2005-06	2006-07	2007-08
Administration			0.60	1.16	1.55	2.10	4.00	4.00	3.00	2.00
American Studies				0.20	0.25					
Anthropology										1.00
Communication	2.49	4.20	1.77	4.20	2.76	4.45	8.00	24.65	11.96	14.10
English	3.50	3.00	7.20	9.73	4.25	6.10	2.75		4.30	8.40
Foreign Languages and Literatures	1.50	1.79	1.50	0.20	1.00	1.00	2.21	2.00	2.02	0.60
Health and Kinesiology	14.59	8.15	7.00	15.90	20.62	11.85	14.38	20.98	21.15	19.35
History	5.00	4.00	3.00	4.00	2.00	3.00	1.30	2.60	0.56	
Linguistics										0.40
Philosophy	2.25	1.00	1.00		1.00	4.00	3.75	0.50	1.00	1.80
Political Science	5.20	4.38	2.00	5.00	3.00	5.05	5.03	7.20	1.58	2.10
Psychological Sciences	34.11	36.06	33.02	32.75	36.33	35.68	35.48	37.72	66.72	37.50
Sociology*	14.30	8.80	14.94	19.34	11.47	12.62	16.75	14.78	24.16	28.15
Speech, Language, and Hearing Sciences	12.45	19.05	15.85	17.40	17.03	22.54	17.90	26.50	46.09	19.42
Student Services and Counseling		0.50								
Visual and Performing Arts	1.00	4.00	3.00	5.00	3.00	2.00	4.00	1.70	3.00	4.50
Women's Studies		1.00	1.00			0.62	0.50		1.65	0.90
Total	96.39	95.93	91.88	114.88	104.26	111.01	116.05	142.63	187.19	140.22

* 1998-99 to 2006-07 data include Sociology and Anthropology
 Fractional number of projects depicts a split of projects among departments.
 2007-08 is the most recent completed fiscal year data

Source: Sponsored Program Services



For questions concerning material in digest contact:

College of Liberal Arts
100 N. University Street
West Lafayette, IN 47907-2098
765-494-3663

Publication Date: September 2010