

PURDUE
UNIVERSITY

COLLEGE OF LIBERAL ARTS 

Voices ♦ Communities ♦ Cultures

Data Digest
2009-10

Facts about:
Students
Instruction
Faculty & Staff
Finances
Research

Students		Faculty & Staff	
<hr/>		<hr/>	
Historical Enrollment by Student Level	4	Faculty & Staff Headcount	27
Undergraduate Enrollment	5	Graduate Staff Headcount by Department	28
Undergraduate Enrollment by Department	6	Tenured & Tenure Track Faculty Headcount by Gender	29
Graduate Enrollment by Department	7	Tenured & Tenure Track Faculty Headcount by Department	30
Enrollment by Gender	8	Tenured & Tenure Track Faculty Headcount by Race/Ethnicity	31
Undergraduate Enrollment by Race/Ethnicity	9	Tenured & Tenure Track Faculty Headcount by Gender & Rank	32
Undergraduate Enrollment by International Students	10	Tenured & Tenure Track Faculty Headcount by Race & Rank	33
Undergraduate Enrollment by Major/Minor	11	Faculty & Staff Headcount by Gender	34
Undergraduate Enrollment by Major/Minor (Continued)	12	Faculty & Staff Headcount by Classification and Race/Ethnicity	35
Degrees Conferred by Degree Level	13	Tenure Track and Clinical Faculty Searches	36
Baccalaureate Degrees Conferred by Department	14	Promotions by Rank, Gender & Race/Ethnicity	37
Average SAT Scores	15		
Retention and Graduation Rates	16	Finances	
		<hr/>	
		Total Annual Expenditures	39
		Total Annual Expenditures by Category	40
		Total General Fund Expenditures	41
		Total Gift Fund Expenditures	42
		Total Sponsored Program Expenditures	43
		Expenditures by Type & Source	44
		Development Annual Giving	45
		Endowment Market Value	46
		Endowment Income Summary	47
Instruction		Research	
<hr/>		<hr/>	
Average Class Size by Department	18	Total Annual Sponsored Program Awards	49
Weekly Teacher Class Hours per General Fund Faculty FTE	19	Total Extramural Awards by Sponsor	50
Weekly Student Class Hours - Fall Semesters	20	Total Extramural Awards by Activity Type	51
Weekly Student Class Hours by Type of Instr. and Rank of Instructor	21	Total Extramural Awards by Department	52
Weekly Student Class Hours by Department	22	Total Extramural Proposals by Sponsor	53
Weekly Student Class Hours - Summary University	23	Total Extramural Proposals by Activity Type	54
		Total Extramural Proposals by Department	55



Data Digest 2009-10
College of Liberal Arts

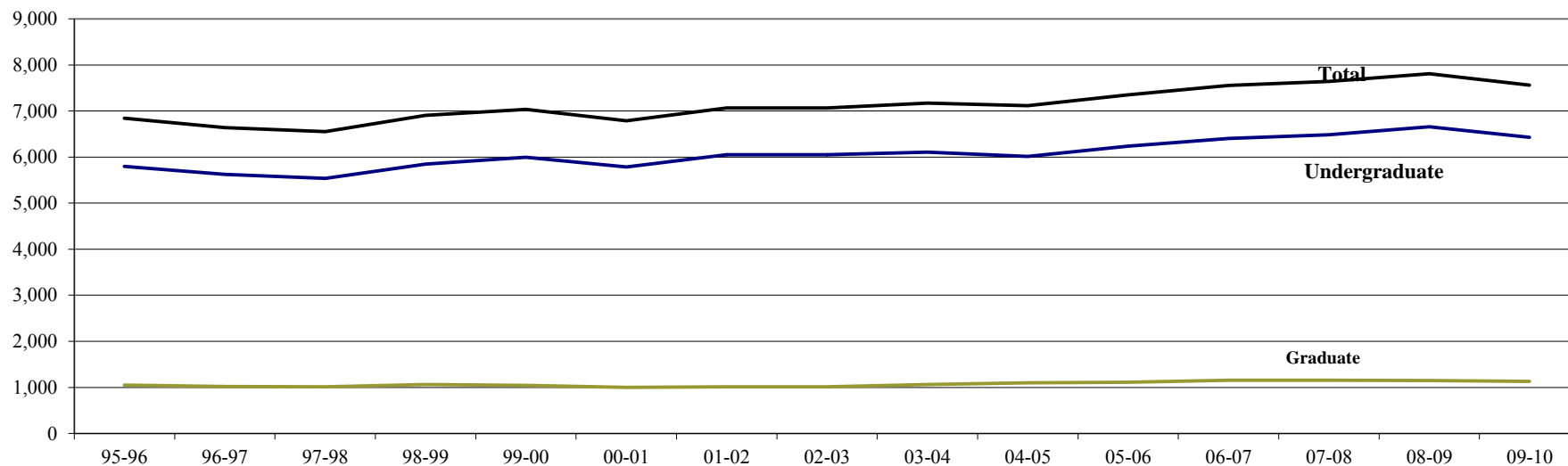
Students

Historical Fall Semester Enrollment by Student Level

Data Digest 2009-10

College of Liberal Arts

Classification	95-96	96-97	97-98	98-99	99-00	00-01	01-02	02-03	03-04	04-05	05-06	06-07	07-08	08-09	09-10
Undergraduate	5,795	5,623	5,536	5,846	5,993	5,787	6,054	6,052	6,109	6,014	6,239	6,403	6,486	6,657	6,429
Graduate	1,050	1,019	1,014	1,062	1,045	1,001	1,010	1,015	1,062	1,102	1,113	1,154	1,155	1,149	1,132
Total Liberal Arts	6,845	6,642	6,550	6,908	7,038	6,788	7,064	7,067	7,171	7,116	7,352	7,557	7,641	7,806	7,561
University Enrollment	34,685	35,156	35,715	36,878	37,762	37,871	38,208	38,564	38,847	38,653	38,712	39,228	39,102	40,090	39,697
% of University Total	20%	19%	18%	19%	19%	18%	18%	18%	18%	18%	19%	19%	20%	19%	19%



Economics was a shared program with the School of Management. The figures above include 50% of all Economics majors through 2000-01

Source: OIR Student Data

Residence				
	Liberal Arts		University	
	Number	% of Total	Number	% of Total
Indiana Resident	4,716	73%	20,079	64%
Out-of-State	1,491	23%	8,248	26%
International	222	3%	2,818	9%
	6,429		31,145	

Classification				
	Liberal Arts		University	
	Number	% of Total	Number	% of Total
First Year (1s & 2s)	1,463	23%	8,216	26%
Sophomore (3s & 4s)	1,620	25%	7,240	23%
Junior (5s & 6s)	1,577	25%	6,697	22%
Senior (7s & 8s)	1,769	28%	8,775	28%
Nondegree	-	<1%	217	1%
Total Undergraduate	6,429		31,145	
Total Graduate/Prof.	1,132	15%	8,552	22%
	7,561		39,697	

Gender				
	Liberal Arts		University	
	Number	% of Total	Number	% of Total
Male	2,570	40%	17,929	58%
Female	3,859	60%	13,216	42%
	6,429		31,145	

Full / Part-time Status				
	Liberal Arts		University	
	Number	% of Total	Number	% of Total
Full-Time	6,190	96%	29,851	96%
Part-Time	239	4%	1,294	4%
	6,429		31,145	

Figures include 100% of all Economics majors.

Source: OIR Student Data

Ethnicity					
Department	African American	Asian American	Hispanic American	Native American	Total
	Anthoropology	4	1	3	1
Communication	55	45	32	6	138
English	21	19	11	3	54
Foreign Languages and Literatures	6	11	9	3	29
Health and Kinesiology	56	17	38	5	116
History	9	11	9	4	33
Interdisciplinary Studies	11	8	6	3	28
Philosophy		1			1
Political Science	22	28	20	2	72
Psychological Sciences	51	37	31	7	126
Sociology	61	19	40	1	121
Speech, Language, and Hearing Sciences	8	2	5	1	16
Visual and Performing Arts	25	33	18	6	82
General, CODO	30	40	25	3	98
All Liberal Arts	359	272	247	45	923
All Purdue	1,072	1,668	904	154	3,798
Liberal Arts %	33%	16%	27%	29%	24%

Ethnicity				
	Liberal Arts		University	
	Number	% of Total	Number	% of Total
African American	359	6%	1,072	3%
Asian American	272	4%	1,668	5%
Hispanic American	247	4%	904	3%
Native American	45	1%	154	0%
Caucasian	5,061	79%	23,470	75%
Other	117	2%	461	1%
Unreported	108	2%	609	2%
Non-domestic	220	3%	2,807	9%
Total	6,429		31,145	

Fall Semester Undergraduate Enrollment by Department

Data Digest 2009-10

College of Liberal Arts

UNDERGRADUATES	95-96	96-97	97-98	98-99	99-00	00-01	01-02	02-03	03-04	04-05	05-06	06-07	07-08	08-09	09-10
Anthropology	-	-	-	-	-	-	-	-	-	-	-	-	-	65	81
Communication	988	983	955	1,033	1,210	1,248	1,285	1,055	897	770	758	788	879	947	989
English	366	394	391	431	440	460	476	515	510	489	477	484	493	533	494
Foreign Languages and Literatures	101	95	89	85	99	90	108	126	143	147	165	178	181	168	157
Health and Kinesiology	443	394	630	625	589	508	477	512	530	567	572	629	672	751	789
History	205	185	181	160	169	165	178	234	274	291	285	274	288	291	280
Interdisciplinary Studies	38	28	27	37	43	58	63	70	79	98	128	148	148	142	163
Philosophy	15	18	28	24	20	17	25	30	42	40	44	47	53	48	40
Political Science	235	222	243	233	248	264	323	325	388	361	413	458	403	388	403
Psychological Sciences	689	680	657	698	717	729	767	852	882	886	898	920	885	877	814
Sociology*	445	425	392	405	377	372	383	454	461	449	458	452	476	451	521
Speech, Language, and Hearing Sciences	210	212	202	219	198	178	176	161	180	187	227	258	262	244	253
Visual and Performing Arts	538	530	602	628	691	707	796	823	829	835	802	792	790	786	747
Undecided/CODO	1,197	1,115	1,005	1,138	1,053	991	997	895	894	894	1,012	975	956	966	698
Total Liberal Arts	5,470	5,281	5,402	5,716	5,854	5,787	6,054	6,052	6,109	6,014	6,239	6,403	6,486	6,657	6,429

* 94-95 to 07-08 data include Sociology and Anthropology

Source: OIR Student Data

Fall Semester Graduate Enrollment by Department/Program

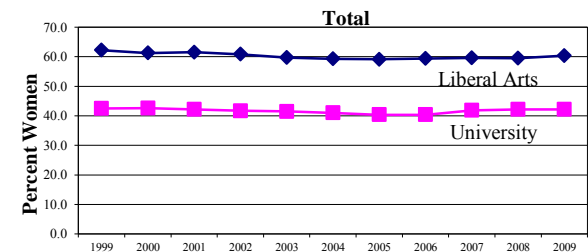
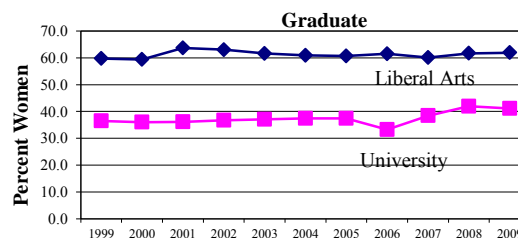
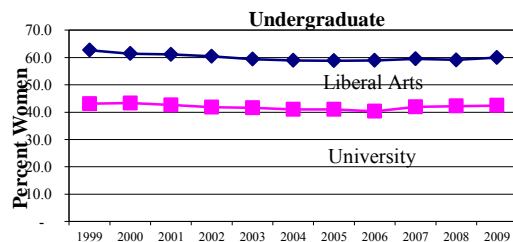
Data Digest 2009-10

College of Liberal Arts

Graduate Students	95-96	96-97	97-98	98-99	99-00	00-01	01-02	02-03	03-04	04-05	05-06	06-07	07-08	08-09	09-10
American Studies	41	42	41	42	35	37	37	45	48	46	44	44	40	42	43
Communication	93	93	95	96	94	98	98	96	100	100	111	110	111	116	110
Comparative Literature	24	27	31	34	34	36	29	26	32	33	31	30	28	23	23
English	240	236	231	238	261	238	214	225	236	231	218	224	225	231	246
Foreign Languages and Literatures	83	85	64	61	64	69	69	59	60	83	83	82	86	89	86
Health and Kinesiology	71	63	69	79	69	74	76	69	72	76	79	92	92	94	84
History	63	58	52	60	55	44	53	61	67	81	80	81	90	72	66
Linguistics	-	4	6	7	9	17	19	23	24	23	26	27	31	33	31
Philosophy	52	47	39	42	38	38	43	44	53	58	70	65	64	53	55
Political Science	62	73	71	63	68	60	59	57	57	55	61	67	64	62	73
Psychological Sciences	130	118	121	120	105	98	96	97	105	108	106	102	92	95	76
Sociology and Anthropology	77	68	74	66	67	66	72	67	69	79	81	89	86	82	84
Speech, Language, and Hearing Sciences	69	60	85	97	94	81	85	76	80	71	68	89	93	97	104
Visual and Performing Arts	45	45	35	57	52	45	60	70	59	58	55	52	53	60	51
Total Liberal Arts	1,050	1,019	1,014	1,062	1,045	1,001	1,010	1,015	1,062	1,102	1,113	1,154	1,155	1,149	1,132

Source: OIR Student Data

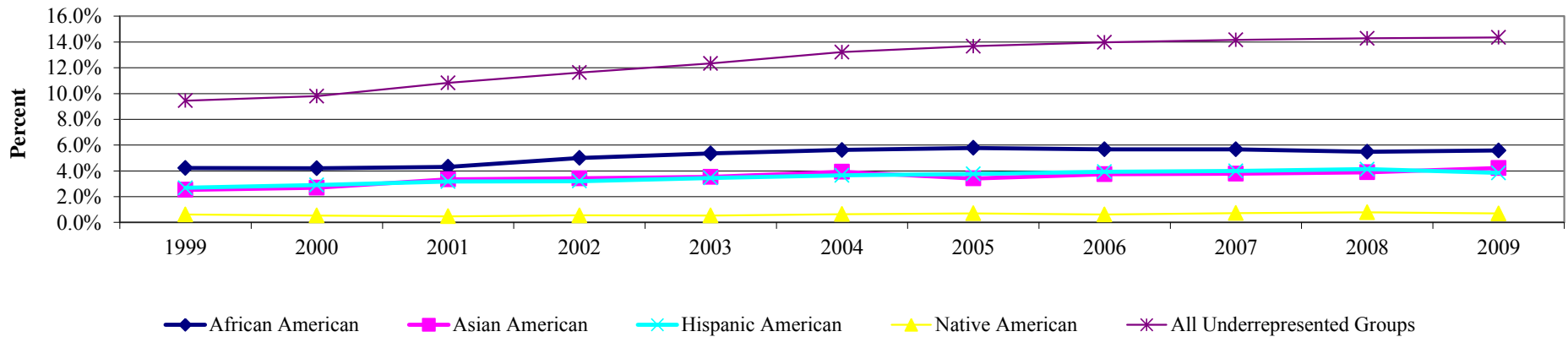
Student Level	1999	2000	2001	2002	2003	2004	2005	2006	2007	2008	2009
Undergraduates											
Men	2,210	2,282	2,400	2,450	2,544	2,542	2,567	2,626	2,627	2,722	2,570
Women	3,715	3,637	3,778	3,747	3,722	3,651	3,672	3,777	3,859	3,935	3,859
Percent Women (Liberal Arts)	62.7	61.4	61.2	60.5	59.4	59.0	58.9	59.0	59.5	59.1	60.0
Percent Women (University)	43.1	43.3	42.6	41.8	41.5	41.0	41.0	40.3	41.9	42.2	42.4
Graduate/Prof. Students											
Men	424	398	367	375	407	430	438	444	461	440	431
Women	621	603	643	640	655	672	675	710	694	709	701
Percent Women (Liberal Arts)	59.8	59.4	63.7	63.1	61.7	61.0	60.6	61.5	60.1	61.7	61.9
Percent Women (University)	36.5	36.0	36.1	36.7	37.0	37.5	37.4	33.3	38.4	41.9	41.1
Total											
Men	2,634	2,680	2,767	2,825	2,951	2,972	3,005	3,070	3,088	3,162	3,001
Women	4,336	4,240	4,421	4,387	4,377	4,323	4,347	4,487	4,553	4,644	4,560
Percent Women (Liberal Arts)	62.2	61.3	61.5	60.8	59.7	59.3	59.1	59.4	59.6	59.5	60.3
Percent Women (University)	42.5	42.6	42.2	41.7	41.5	41.0	40.4	40.4	41.9	42.2	42.1



Source: OIR Student Data

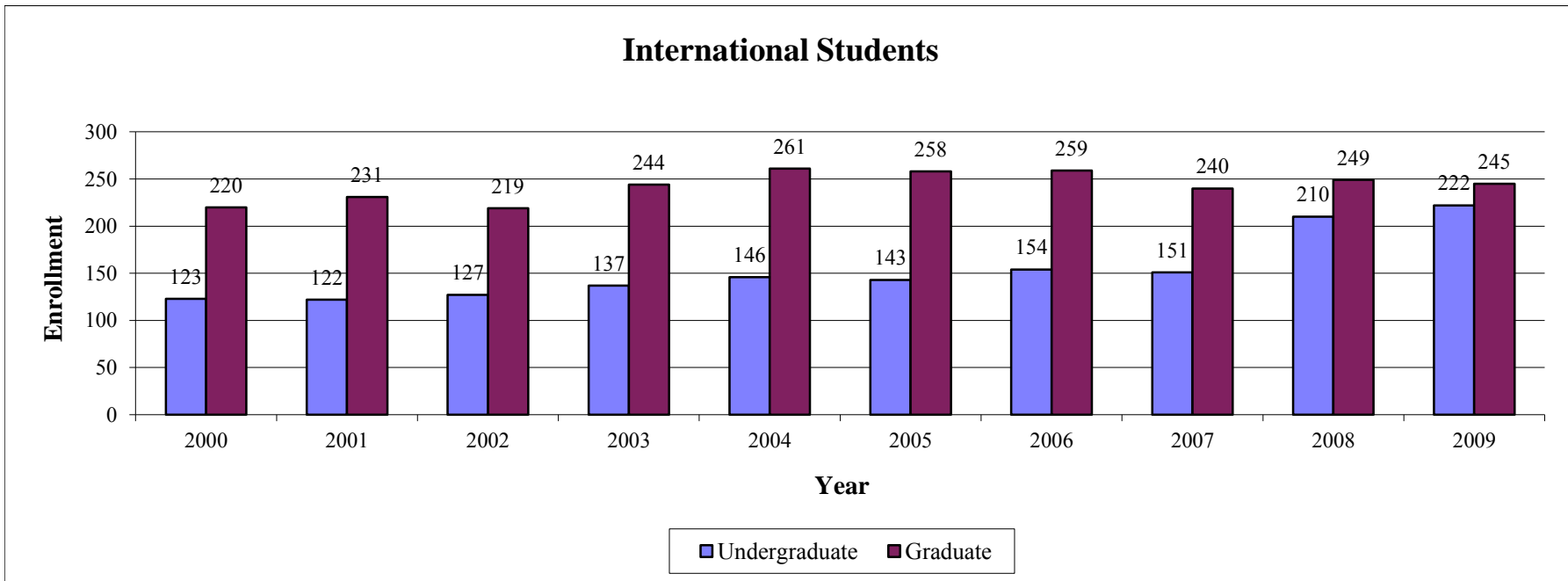
Student Level	1999	2000	2001	2002	2003	2004	2005	2006	2007	2008	2009
Undergraduates											
African American	253	243	261	303	327	338	361	363	368	365	359
Asian American	152	156	203	207	216	237	213	240	245	259	272
Hispanic American	161	168	192	194	211	220	235	252	259	275	247
Native American	37	31	29	33	33	39	44	40	47	52	45
All Underrepresented Groups	566	567	656	704	754	795	853	895	919	951	923
CLA Undergrad Enrollment	5,993	5,787	6,054	6,052	6,109	6,014	6,239	6,403	6,486	6,657	6,429
Undergraduate Percentages											
African American	4.2%	4.2%	4.3%	5.0%	5.4%	5.6%	5.8%	5.7%	5.7%	5.5%	5.6%
Asian American	2.5%	2.7%	3.4%	3.4%	3.5%	3.9%	3.4%	3.7%	3.8%	3.9%	4.2%
Hispanic American	2.7%	2.9%	3.2%	3.2%	3.5%	3.7%	3.8%	3.9%	4.0%	4.1%	3.8%
Native American	0.6%	0.5%	0.5%	0.5%	0.5%	0.6%	0.7%	0.6%	0.7%	0.8%	0.7%
All Underrepresented Groups	9.4%	9.8%	10.8%	11.6%	12.3%	13.2%	13.7%	14.0%	14.2%	14.3%	14.4%

Undergraduate Enrollment by Race/Ethnicity



Source: OIR Student Data

	2000	2001	2002	2003	2004	2005	2006	2007	2008	2009
Undergraduate	123	122	127	137	146	143	154	151	210	222
Graduate	220	231	219	244	261	258	259	240	249	245



Source: OIR Student Data

Undergraduate Enrollment by Major/Minor - Fall 2009

Data Digest 2009-10

College of Liberal Arts

Major/Minor Area by Department	Major Enrollment	Minor Enrollment	Total Enrollment
Visual and Performing Arts			
Art & Design	-	95	95
Art History	39	41	80
Dance	-	15	15
Electronic/Time-Based Art	-	2	2
Fine Arts Concentration	76	-	76
Industrial Design Prof Program	111	-	111
Interior Design	138	-	138
Music History and Theory	-	8	8
Photo & Related Media	67	-	67
Theatre Acting	27	31	58
Theatre Concentration	41	-	41
Theatre Design & Technology	-	5	5
Visual Arts Design/Teaching	8	-	8
Visual Arts Teaching, K-12	68	-	68
Visual Communications Design	173	-	173
Department Total	748	197	945
Speech, Language, and Hearing Sciences			
Speech, Language, and Hearing Sciences	195	-	195
Speech, Language, and Hearing Sciences Concentration	15	-	15
Speech, Language, and Hearing Sciences/Pre-professional	48	-	48
Department Total	258		258
English			
Creative Writing	99	32	131
English	161	61	222
English Secondary Teaching	167	32	199
Professional Writing	85	-	85
Department Total	512	125	637
Interdisciplinary Studies			
African-American Studies	5	15	20
Asian American Studies	-	2	2
Asian Studies	12	5	17
Classical Studies	17	26	43
Comparative Literature	7	-	7
Film Video Studies	-	19	19
Film Video & Thtr Production	1	-	1
Global Studies	-	6	6
Interdisciplinary Film/Video	78	7	85
Italian Studies	3	-	3
Jewish Studies	2	6	8
Linguistics	18	12	30
Medieval & Renaissance Studies	5	6	11
Peace Studies	-	7	7
Religious Studies	13	19	32
Women's Studies	5	21	26
Department Total	166	151	317

Major/Minor Area by Department	Major Enrollment	Minor Enrollment	Total Enrollment
History			
History	273	100	373
History Honors	6	-	6
Department Total	279	100	379
Foreign Languages and Literatures			
Chinese		5	5
French	15	32	47
French Teaching	3	-	3
German	8	8	16
German Secondary Teaching	3		3
Italian		12	12
Japanese	43	10	53
Latin	1	1	2
Latin American & Latino Studies		2	2
Portuguese		2	2
Russian	3	1	4
Spanish	51	177	228
Spanish - Alternate Track		6	6
Spanish Concentration	1		1
Spanish Secondary Teaching	27		27
Department Total	155	256	411
Philosophy			
Philosophy	41	57	98
Department Total	41	57	98
Health and Kinesiology			
Health & Fitness	159		159
Health & Fitness Concentration	19	-	19
Health Promotion	51		51
Health Promotion Concentration	45	-	45
Health & Safety Teaching	23	1	24
Physical Education All Grade Teaching	109	-	109
Movement & Sport Science	267	-	267
Pre-Athletic Training	70		70
Athletic Training	43		43
Personal Fitness Training	6		6
Pre-Personal Fitness Training	1		1
Department Total	793	1	794
Political Science			
Political Science	415	73	488
Environmental Politics and Policy		2	2
Department Total	415	75	490

Source: Cognos Student Data

Undergraduate Enrollment by Major/Minor (Continued) - Fall 2009

Data Digest 2009-10

College of Liberal Arts

Major/Minor Area by Department	Major Enrollment	Minor Enrollment	Total Enrollment
Psychological Sciences			
Psychology	245	200	445
Pre-Psychology	506	-	506
Behavioral Neuroscience Psychology	65	-	65
Department Total	816	200	1,016
Anthropology			
Anthropology	83	24	107
Anthropology Honors	1	-	1
Department Total	84	24	108
Sociology			
Law & Society	386	43	429
Law & Society Honors	3	-	3
Sociology	141	90	231
Department Total	530	133	663
Communication			
Pre-Communication	606	-	606
General Communication	43	88	131
Interpersonal Communication	7	-	7
Mass Communication	62	-	62
Organizational Communication	15	-	15
Public Relations & Rhetorical Advocacy	235	-	235
Human Relations	24	-	24
Department Total	992	88	1,080
Other and Preparatory			
General-Undecided	300	-	300
Liberal Arts Honors Program	4	-	4
Non LA Undecided	371	-	371
Undecided Pre-Law	10	-	10
Aerospace Studies	-	1	1
Military Science & Leadership	-	13	13
Naval Science	-	14	14
Department Total	685	28	713

Minors Outside Liberal Arts	College	Enrollment
Animal Sciences	AG	2
Food & Agribusiness Management	AG	1
Forensic Sciences	AG	148
Furniture Design	AG	1
Horticulture	AG	2
Plant Biology	AG	1
Wildlife Science	AG	2
Child Development and Family Studies	CFS	87
Food and Nutrition	CFS	2
Economics	MGMT	9
Management	MGMT	5
Biological Sciences	SCI	20
Chemistry	SCI	2
Mathematics	SCI	2
Physics	SCI	1
Statistics	SCI	1
Computer & Information Technology	TECH	11
Manufacturing Graphics (for ID majors only)	TECH	2
Organization Leadership	TECH	149
Total		448

Number of Majors with Enrolled Students	73
Number of Minors within Liberal Arts with Enrolled Students	47
Number of Minors outside Liberal Arts with Enrolled Students	19
Total Enrollment of Majors	6474
Total Enrollment of Minors	1883

Data was pulled from Cognos and the total enrollment may not precisely match official reports

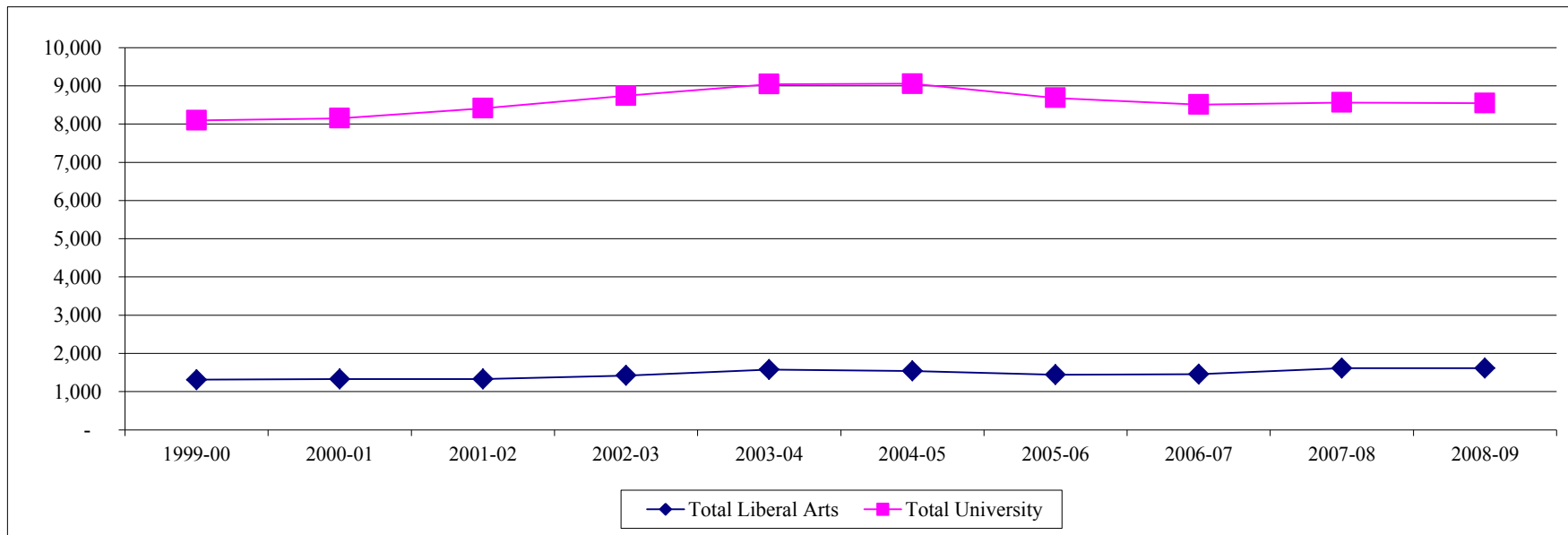
Source: Cognos Student Data

Degrees Conferred by Degree Level

Data Digest 2009-10

College of Liberal Arts

Area	Degree Level	1999-00	2000-01	2001-02	2002-03	2003-04	2004-05	2005-06	2006-07	2007-08	2008-09
Liberal Arts	Baccalaureate	1,064	1,070	1,092	1,185	1,295	1,268	1,181	1,191	1,389	1,304
	Master's	159	162	149	166	204	182	182	167	138	182
	Doctorate	88	95	88	71	79	91	80	99	85	125
	Total Liberal Arts	1,311	1,327	1,329	1,422	1,578	1,541	1,443	1,457	1,612	1,611
University	Associate	732	640	669	683	644	543	529	458	458	404
	Baccalaureate	5,436	5,579	5,800	5,999	6,154	6,197	5,948	5,839	5,940	5,943
	Education Specialist	1	1	1	2	-	3	2	1	1	1
	Professional	176	184	192	203	216	239	219	230	245	224
	Master's	1,286	1,284	1,340	1,392	1,583	1,548	1,420	1,377	1,326	1,321
	Doctorate	468	464	409	463	446	524	566	607	595	657
	Total University	8,099	8,152	8,411	8,742	9,043	9,054	8,684	8,512	8,565	8,550
Liberal Arts - % of University Total		16%	16%	16%	16%	17%	17%	17%	17%	19%	19%



2008-09 is the most recent fiscal year degree data

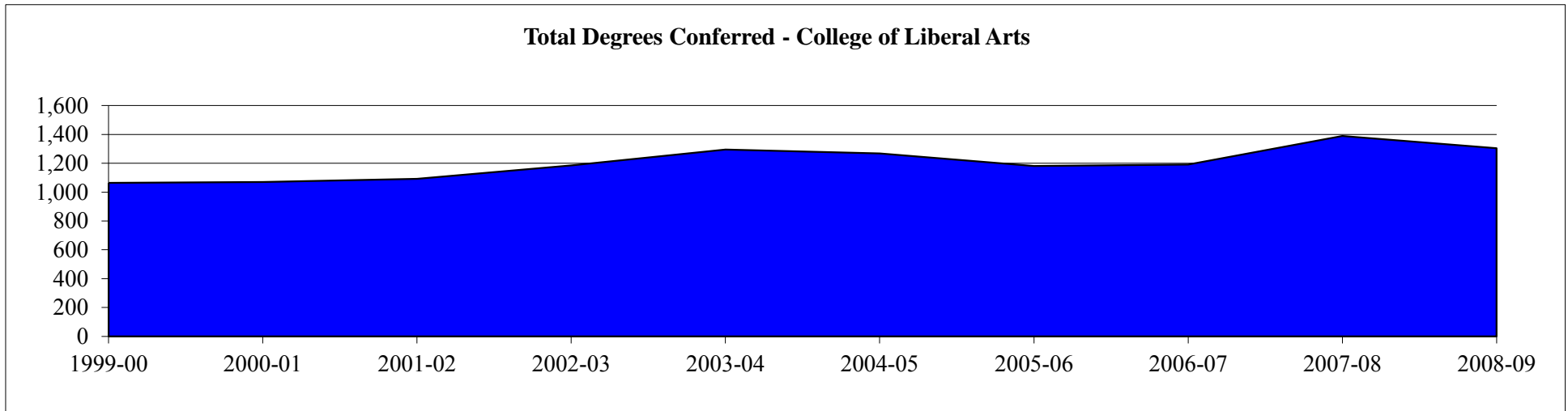
Source: OIR Student Data

Baccalaureate Degrees Conferred by Department

Data Digest 2009-10

College of Liberal Arts

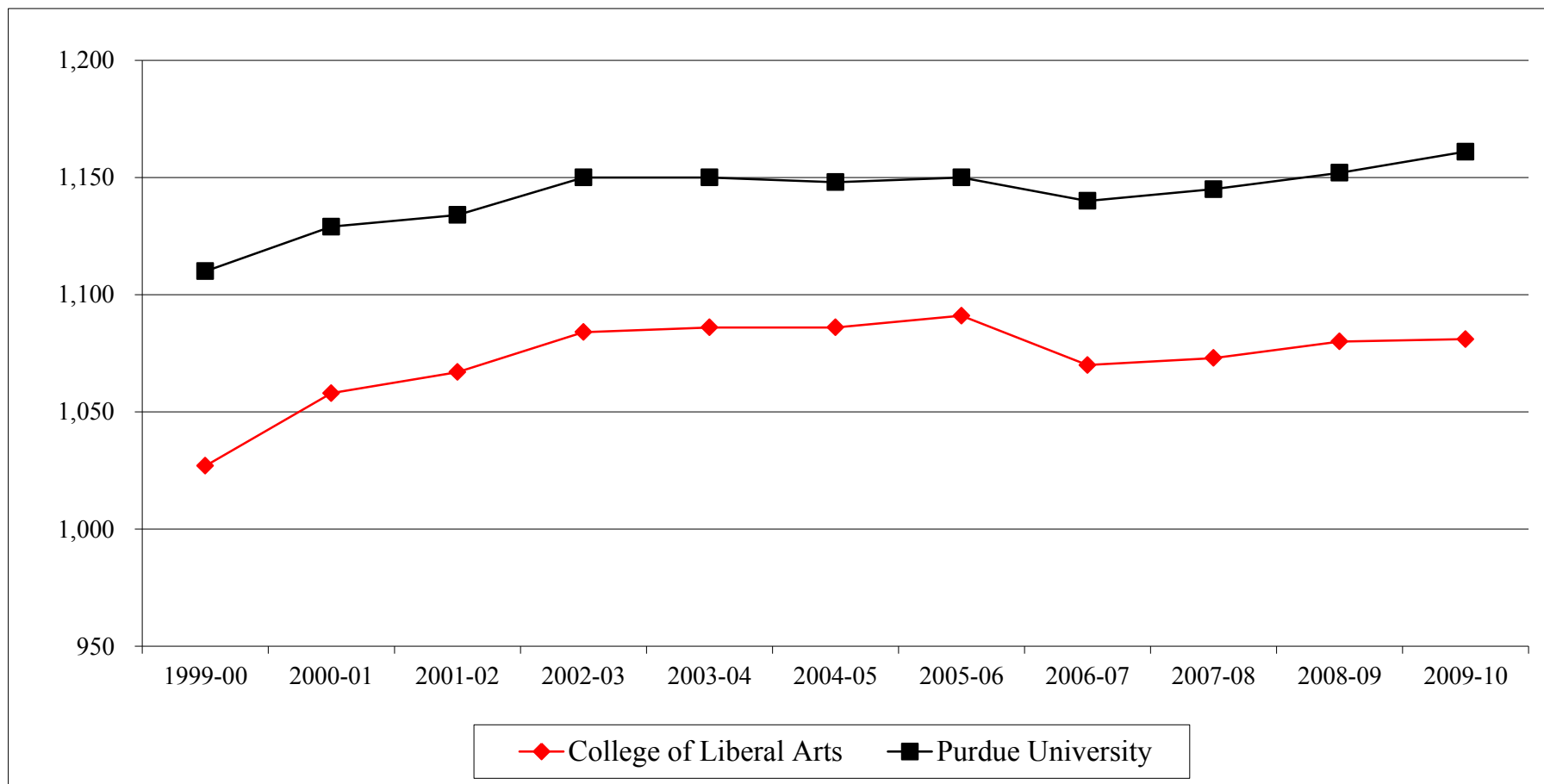
Department	1999-00	2000-01	2001-02	2002-03	2003-04	2004-05	2005-06	2006-07	2007-08	2008-09
Communication	240	258	316	283	265	203	166	166	193	215
Economics	29	0	0	0	0	0	0	0	0	0
English	97	115	105	144	146	132	130	109	124	111
Foreign Languages and Literatures	35	28	18	28	35	36	34	28	53	39
Health and Kinesiology	106	115	95	94	108	119	115	97	136	163
History	50	50	37	52	68	77	82	80	85	74
Interdisciplinary Studies	7	7	19	13	23	25	32	39	34	35
Philosophy	7	5	7	5	14	10	11	10	19	13
Political Science	59	61	53	67	102	90	87	101	127	114
Psychological Sciences	164	156	178	205	210	233	210	228	242	209
Sociology and Anthropology	105	97	105	118	127	130	118	125	135	126
Speech, Language, and Hearing Sciences	61	55	53	52	57	52	50	55	90	76
Visual & Performing Arts	104	123	106	124	140	161	146	153	151	129
Total College of Liberal Arts	1,064	1,070	1,092	1,185	1,295	1,268	1,181	1,191	1,389	1,304



2008-09 is the most recent fiscal year degree data

Source: OIR Student Data

	1999-00	2000-01	2001-02	2002-03	2003-04	2004-05	2005-06	2006-07	2007-08	2008-09	2009-10
College of Liberal Arts	1,027	1,058	1,067	1,084	1,086	1,086	1,091	1,070	1,073	1,080	1,081
Purdue University	1,110	1,129	1,134	1,150	1,150	1,148	1,150	1,140	1,145	1,152	1,161



Source: Office of Enrollment Management

Fall 2003 Beginning Students¹

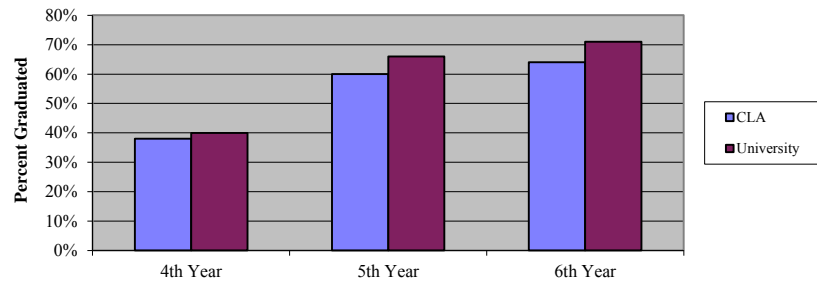
	Status			
	Enrollment		Voluntarily	Academic
	Continued	Graduated	Withdrew	Dismissal
After Year 1	81%	0%	16%	4%
After Year 2	72%	0%	21%	7%
After Year 3	67%	1%	23%	9%
After Year 4	27%	38%	24%	9%
After Year 5	16%	60%	24%	N/A
After Year 6	3%	64%	24%	N/A

N=1084

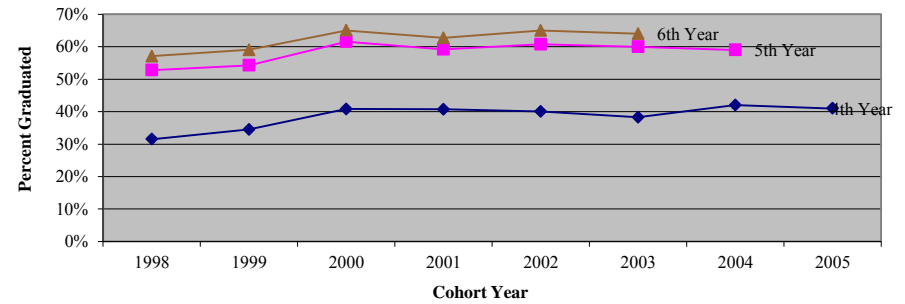
Historical Graduation Rate

Fall	Beginning	First-Year	Graduated	Graduated	Graduated
Beginners	Enrollment	Retention	Within	Within	Within
		Rate	4 Years	5 Years	6 Years
1998	1,356	78%	31%	53%	57%
1999	1,365	78%	35%	54%	59%
2000	1,176	83%	41%	62%	65%
2001	1,162	81%	41%	59%	63%
2002	1,019	82%	40%	61%	65%
2003	1,084	81%	38%	60%	64%
2004	1,163	83%	42%	59%	-
2005	1,228	80%	41%	-	-

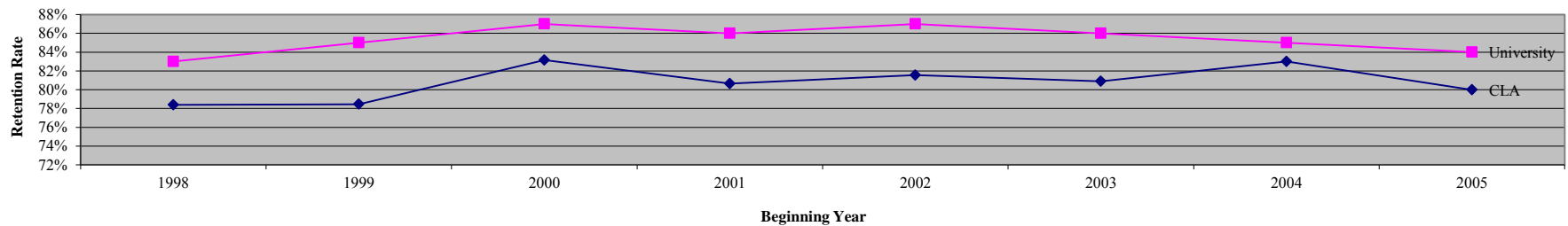
2003 CLA Beginning Students Degree Completed



CLA Historical Graduation Rates



Historical First-Year Retention Rate



¹ Degree-seeking first-year students who enrolled in summer or fall 2003.

Source: Office of Enrollment Management



Data Digest 2009-10
College of Liberal Arts

Instruction

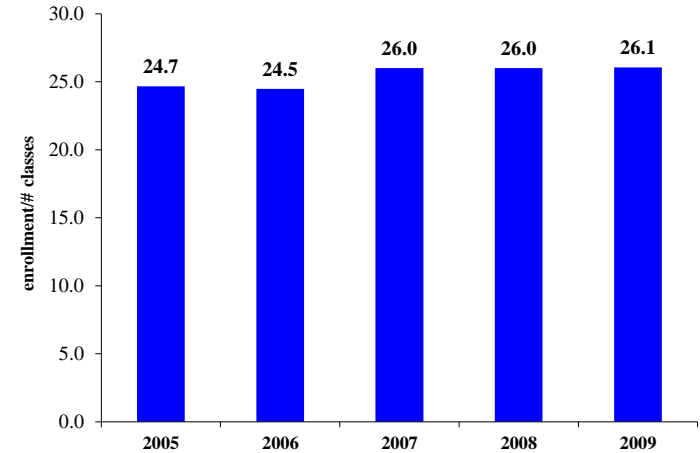
Fall Semester Average Class Size by Department - (Organized Classes)

Class Enrollment	2005	2006	2007	2008	2009
Anthropology	-	-	-	1,277	1,832
Communication	7,491	7,838	6,787	8,463	7,740
English	10,676	11,284	5,844	9,887	9,731
Foreign Languages and Literatures	10,411	10,507	8,253	7,980	8,725
General Studies*	996	1,329	1,138	2,000	1,855
Health and Kinesiology	4,063	4,282	2,270	2,858	3,557
History	4,442	3,997	3,898	3,578	3,638
Philosophy	2,428	2,634	1,476	1,902	2,001
Political Science	2,827	2,482	2,416	2,544	2,650
Psychological Sciences	6,900	7,181	4,242	5,947	5,688
Sociology**	5,187	5,380	4,585	4,000	3,647
Speech, Language, and Hearing Sciences	1,391	1,653	726	1,810	1,530
Visual & Performing Arts	6,570	6,395	3,954	5,115	4,910
Total College of Liberal Arts	63,381	64,962	45,588	57,359	57,504

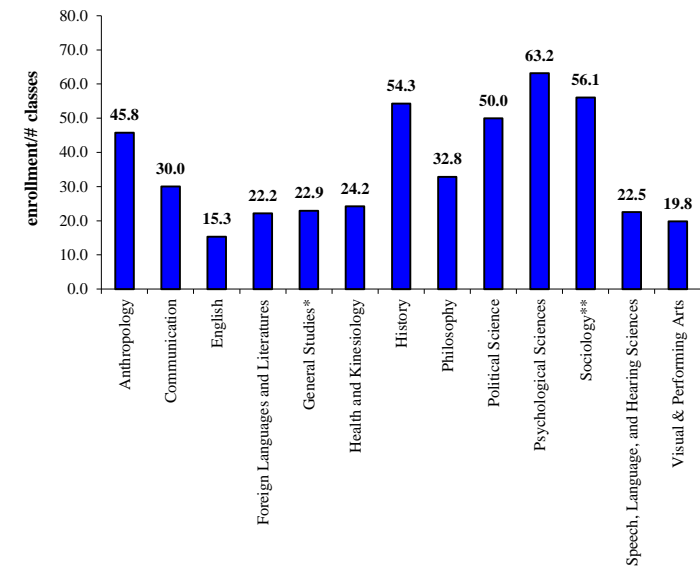
Number of Classes	2005	2006	2007	2008	2009
Anthropology	-	-	-	28	40
Communication	261	275	224	273	258
English	659	728	377	642	636
Foreign Languages and Literatures	482	491	393	380	393
General Studies*	51	57	47	100	81
Health and Kinesiology	227	192	132	127	147
History	64	71	71	67	67
Philosophy	71	71	45	60	61
Political Science	57	47	40	48	53
Psychological Sciences	125	136	79	102	90
Sociology**	91	100	88	66	65
Speech, Language, and Hearing Sciences	122	145	66	73	68
Visual & Performing Arts	359	342	191	239	248
Total College of Liberal Arts	2,569	2,655	1,753	2,205	2,207

Average Class Size	2005	2006	2007	2008	2009
Anthropology	-	-	-	45.6	45.8
Communication	28.7	28.5	30.3	31.0	30.0
English	16.2	15.5	15.5	15.4	15.3
Foreign Languages and Literatures	21.6	21.4	21.0	21.0	22.2
General Studies*	19.5	23.3	24.2	20.0	22.9
Health and Kinesiology	17.9	22.3	17.2	22.5	24.2
History	69.4	56.3	54.9	53.4	54.3
Philosophy	34.2	37.1	32.8	31.7	32.8
Political Science	49.6	52.8	60.4	53.0	50.0
Psychological Sciences	55.2	52.8	53.7	58.3	63.2
Sociology**	57.0	53.8	52.1	60.6	56.1
Speech, Language, and Hearing Sciences	11.4	11.4	11.0	24.8	22.5
Visual & Performing Arts	18.3	18.7	20.7	21.4	19.8
Total College of Liberal Arts	24.7	24.5	26.0	26.0	26.1

Liberal Arts Average Class Size



Avg. Class Size by Dept. - Fall 2009



* General Studies include: Interdisciplinary Studies, Counseling & Student Services and College of Liberal Arts Administration

** 2004 -- 2007 data include Sociology and Anthropology

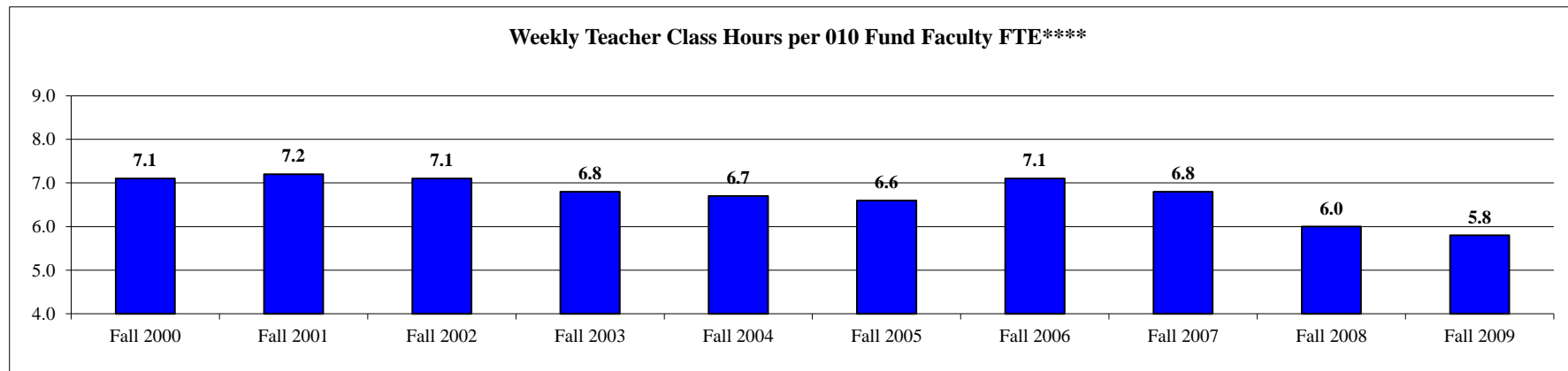
Weekly Class Hours per General Fund Faculty FTE

Data Digest 2009-10

College of Liberal Arts

Department	Fall 2000	Fall 2001	Fall 2002	Fall 2003	Fall 2004	Fall 2005	Fall 2006	Fall 2007	Fall 2008	Fall 2009
Anthropology	-	-	-	-	-	-	-	-	4.5	5.1
Communication	5.7	6.5	6.5	6.0	5.4	6.0	6.2	5.2	8.0	4.8
English	7.6	7.0	6.2	6.6	6.7	6.6	6.8	6.6	5.8	5.4
Foreign Languages and Literatures	7.9	8.5	8.1	7.9	7.4	7.5	7.8	8.0	6.7	6.9
General Studies*	5.2	3.6	6.0	0.0	5.5	2.4	0.0	8.5	38.1	32.3
Health and Kinesiology	7.5	7.0	7.4	8.8	10.8**	11.4	9.1	8.7	5.2	7.4
History	5.4	5.6	4.8	4.9	5.0	5.5	5.7	5.5	5.6	5.6
Philosophy	5.0	4.2	5.1	4.3	3.8	3.7	3.5	4.1	4.4	4.8
Political Science	4.4	4.8	5.0	5.4	5.1	5.0	4.0	3.9	4.7	5.2
Psychological Sciences	5.0	5.3	5.1	4.4	4.4	4.1	5.3	4.4	4.1	3.2
Sociology***	5.8	5.0	5.5	4.9	5.1	5.5	4.8	5.3	4.2	5.3
Speech, Language, and Hearing Sciences	7.0	6.2	5.3	5.1	4.7	3.5	11.8	8.5	3.5	3.8
Visual and Performing Arts	12.9	11.8	10.9	11.5	10.9	11.3	11.0	12.8	9.6	10.8
College	7.1	7.2	7.1	6.8	6.7	6.6	7.1	6.8	6.0	5.8

All Colleges	Fall 2000	Fall 2001	Fall 2002	Fall 2003	Fall 2004	Fall 2005	Fall 2006	Fall 2007	Fall 2008	Fall 2009
High	11.9	11.9	12.0	11.5	15.1	11.4	11.8	12.8	23.7	12.0
Median	7.1	7.2	7.1	7.9	6.7	6.6	6.8	6.6	5.0	5.1
Low	4.6	4.3	4.3	0.0	2.0	0.9	0.0	0.2	2.0	2.0



* General Studies include: Interdisciplinary Studies, Counseling & Student Services and College of Liberal Arts Administration

**HK 201, 301, and 401 are excluded

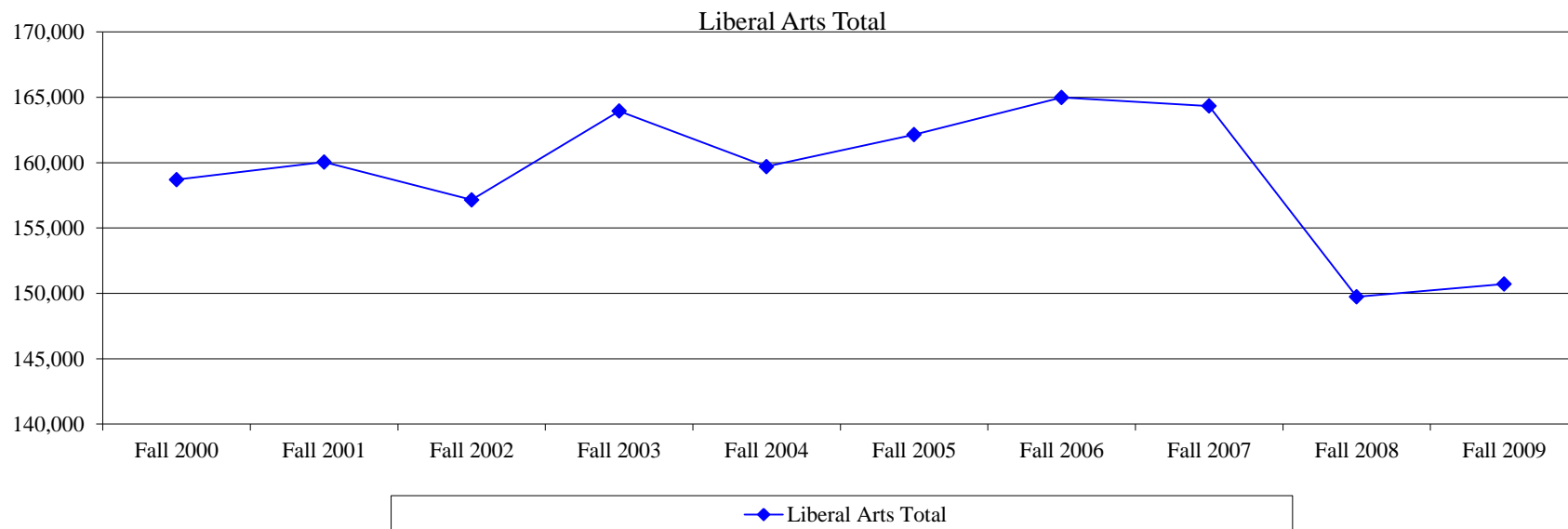
***1999 -- 2007 data include Sociology and Anthropology

****Beginning in 2003, these data include deans and department heads

Organized classes only

Source: Space Management & Academic Scheduling

Departments	Fall 2000	Fall 2001	Fall 2002	Fall 2003	Fall 2004	Fall 2005	Fall 2006	Fall 2007	Fall 2008	Fall 2009
Anthropology	-	-	-	-	-	-	-	-	2,867	4,428
Communication	22,366	22,110	20,741	20,736	19,113	20,143	21,245	21,094	21,553	20,102
English	31,575	31,156	30,123	24,903	24,761	25,058	26,497	25,419	23,364	22,765
Foreign Languages and Literatures	22,953	23,070	22,229	24,987	24,654	25,338	25,720	25,979	19,509	21,121
General Studies*	2,352	2,336	2,447	2,448	2,844	2,725	3,162	2,985	4,693	4,449
Health and Kinesiology	9,186	8,949	8,500	10,627	10,774	10,130	10,747	10,503	7,297	8,923
History	11,806	11,142	10,282	11,639	10,807	13,033	11,782	11,452	10,346	10,813
Philosophy	4,565	4,919	5,107	5,617	5,450	4,987	5,279	5,023	4,689	4,987
Political Science	6,127	6,812	7,268	8,337	7,871	8,101	7,058	7,389	7,313	7,575
Psychological Sciences	15,952	18,227	18,013	19,779	19,097	17,686	18,530	17,214	15,095	14,631
Sociology**	11,182	10,968	11,094	12,202	13,348	14,499	14,485	15,481	11,273	10,603
Speech, Language, and Hearing Sciences	3,523	3,376	3,422	4,063	2,931	3,358	3,937	4,255	4,659	3,911
Visual and Performing Arts	17,111	16,985	17,923	18,608	18,052	17,083	16,539	17,540	17,075	16,413
Liberal Arts Total	158,698	160,050	157,149	163,946	159,702	162,141	164,981	164,334	149,733	150,721



* General Studies include: Interdisciplinary Studies, Counseling & Student Services and College of Liberal Arts Administration

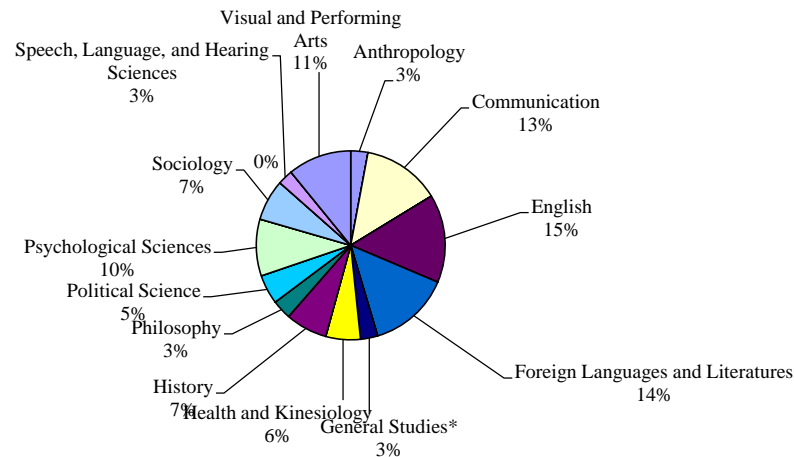
** 1999 -- 2007 data include Sociology and Anthropology

Type of Instruction	Tenure and tenure-track faculty	Non-tenure track appointment	Graduate student staff	All other instructors	Total	Percent of All WSCH
College of Liberal Arts Total						
ORGANIZED CLASS INSTRUCTION						
Non-laboratory class instruction						
Lecture	57,253	21,513	44,193	4,903	127,862	
Recitation	358	157	3,988	508	5,011	
Total non-lab	57,611	21,670	48,181	5,411	132,873	88%
Percent of all non-lab WSCH	43%	16%	36%	4%	100%	
Laboratory class instruction						
Laboratory	4,301	5,089	8,068	389	17,847	
Lab preparatory	-	-	-	-	-	
Clinics	-	-	-	-	-	
Total lab	4,301	5,089	8,068	389	17,847	12%
Percent of all lab WSCH	24%	29%	45%	2%	100%	
ALL ORGANIZED CLASSES	61,912	26,759	56,249	5,800	150,720	100%
Percent of all organized WSCH	41%	18%	37%	4%	100%	

Source: Space Management & Academic Scheduling

Departments	Tenure and tenure-track faculty	%	Non-tenure track appointment	%	Graduate student staff	%	All other instructors	%	Total	Pct of all WSCH
<i>Anthropology</i>	3,983	90%	225	5%	219	5%	-	0%	4,427	3%
<i>Communication</i>	3,884	19%	2,364	12%	13,358	66%	497	2%	20,103	13%
<i>English</i>	5,368	24%	2,484	11%	12,987	57%	1,926	8%	22,765	15%
<i>Foreign Languages and Literatures</i>	4,561	22%	4,602	22%	11,883	56%	76	0%	21,122	14%
<i>General Studies*</i>	559	13%	1,112	25%	2,031	46%	748	17%	4,450	3%
<i>Health and Kinesiology</i>	2,857	32%	2,563	29%	2,425	27%	1,078	12%	8,923	6%
<i>History</i>	9,757	90%	273	3%	668	6%	114	1%	10,812	7%
<i>Philosophy</i>	2,802	56%	-	0%	2,031	41%	154	3%	4,987	3%
<i>Political Science</i>	6,368	84%	-	0%	1,207	16%	-	0%	7,575	5%
<i>Psychological Sciences</i>	8,313	57%	4,326	30%	1,608	11%	383	3%	14,630	10%
<i>Sociology</i>	4,965	47%	2,798	26%	2,636	25%	204	2%	10,603	7%
<i>Speech, Language, and Hearing Sciences</i>	1,900	49%	1,132	29%	428	11%	450	12%	3,910	3%
<i>Visual and Performing Arts</i>	6,595	40%	4,880	30%	4,768	29%	170	1%	16,413	11%
Liberal Arts Total	61,912	41%	26,759	18%	56,249	37%	5,800	4%	150,720	100%

WSCH as Percent of CLA Total



* General Studies include: Interdisciplinary Studies, Counseling & Student Services and College of Liberal Arts Administration

All Campus

Summary Data for 2009 - Purdue University at W. Lafayette

	1 1a		2 2a		3 3a		4 4a		5 5a		6	7 7a		8 8a		9 9a	
	WCH per FTE Gen. Fund Faculty		WCH per FTE Gen. Fund Grad Asst		WSCH per FTE Gen. Fund Faculty		WSCH per FTE Gen. Fund Grad Asst		% WSCH taught by Gen. Fund			Student Credit Hour per Gen. Fund FTE		Gen. Fund expenditures per credit hour		Sponsd Program exp per Ten/ Ten Trck FTE	
	Fall '09	04-09 Change	Fall '09	04-09 Change	Fall '09	04-09 Change	Fall '09	04-09 Change	Faculty	Grad Asst		Fall '09	Faculty	Grad Asst	2008-09	2003-04 in '08\$	2008-09
AGR	4.3	-12%	1.2	-14%	153	-4%	23	31%	85%	5%	30%	142	13	\$549	\$656	\$279,362	-1%
CFS	6.1	-13%	4.5	78%	251	-22%	165	61%	74%	22%	26%	256	145	\$235	\$232	\$322,131	38%
EDUC	3.4	-20%	6.1	9%	69	-15%	144	22%	57%	43%	41%	106	138	\$324	\$273	\$39,791	4%
ENGR	3.9	-10%	1.8	-54%	163	-11%	43	-36%	77%	13%	3%	151	19	\$554	\$519	\$300,833	-10%
LA	5.8	-23%	7.3	-4%	188	-14%	167	-5%	59%	37%	49%	184	157	\$162	\$166	\$35,801	10%
MGMT	5.5	4%	2.2	22%	335	6%	105	20%	84%	10%	38%	343	105	\$225	\$220	\$55,042	-50%
PNHS	5.2	-16%	2.2	-29%	146	-4%	29	-43%	89%	5%	3%	134	11	\$422	\$460	\$214,882	-12%
SCI	3.6	-7%	5.8	-2%	207	-12%	159	-3%	55%	36%	76%	209	115	\$269	\$279	\$171,470	-19%
TECH	11.4	5%	9.9	-10%	221	-25%	188	-5%	80%	16%	18%	195	120	\$235	\$206	\$26,939	227%
V MED	2.0	-87%	0.9	-68%	80	-45%	48	5%	75%	5%	0%	63	14	\$1,056	\$967	\$111,635	-21%
TOTAL	5.1	-20%	5.0	-11%	184	-14%	125	-7%	67%	26%	43%	179	100	\$296	\$294	\$157,623	-6%
<i>All Campus</i>																	
<i>High</i>	11.4		9.9		335		188		89%	43%	76%	343	157	\$1,056		\$322,131	
<i>Median</i>	4.8		3.4		176		125		76%	15%	28%	168	110	\$297		\$141,553	
<i>Low</i>	2.0		0.9		69		23		55%	5%	0%	63	11	\$162		\$26,939	

Source: Space Management & Academic Scheduling

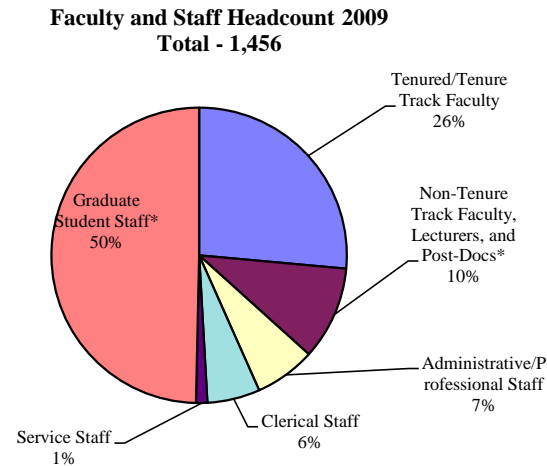
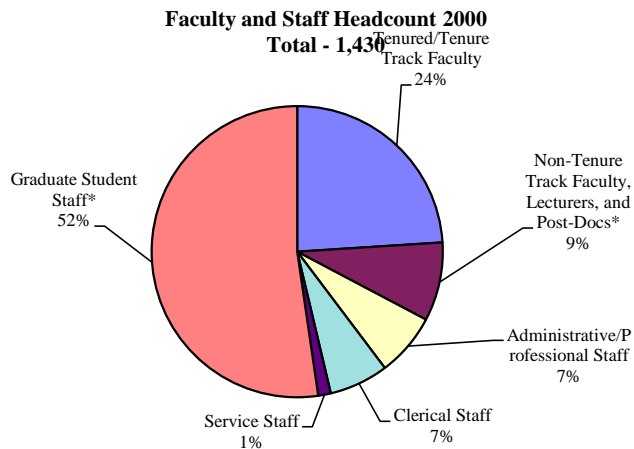


Data Digest 2009-10
College of Liberal Arts

Faculty & Staff

Classification	2000	2001	2002	2003	2004	2005	2006	2007	2008	2009
Tenured/Tenure Track Faculty	343	347	352	348	355	351	358	372	384	385
Non-Tenure Track Faculty, Lecturers, and Post-Docs*	125	130	132	129	124	156	156	156	164	149
Clinical/Professional								18	21	24
Continuing Lecturers								60	60	64
Limited-term Lecturers								52	60	48
Post-Doctoral								7	7	6
Research Faculty								1	1	1
Visiting Faculty								18	15	6
Administrative/Professional Staff	100	103	107	114	114	106	103	100	95	97
Clerical Staff	94	86	92	84	84	80	80	85	89	84
Service Staff	20	23	19	19	22	25	28	23	30	18
Graduate Student Staff*	748	748	787	773	795	777	788	791	762	723
Graduate Teaching Assistants								685	640	601
Graduate Research Assistants								90	89	87
Graduate Administrative/Professional								2	9	11
Graduate Lecturer								14	24	24
Total	1,430	1,437	1,489	1,467	1,494	1,495	1,513	1,527	1,524	1,456

*Further breakdown of these staff types included beginning in 2007



Source: OIR Faculty and Staff Data

Department	2009
Anthropology	
Graduate Teaching Asst/Graduate Lecturer	12
Research Asst.	1
Communication	
Graduate Teaching Asst/Graduate Lecturer	72
Graduate Research Asst.	9
Graduate Administrative/Professional	1
Dean's Office	
Graduate Teaching Asst/Graduate Lecturer	3
Graduate Research Asst.	4
Graduate Administrative/Professional	2
English	
Graduate Teaching Asst/Graduate Lecturer	165
Graduate Research Asst.	3
Foreign Languages and Literatures	
Graduate Teaching Asst/Graduate Lecturer	102
Graduate Research Asst.	2
General Studies*	
Graduate Teaching Asst/Graduate Lecturer	45
Graduate Research Asst.	2
Health and Kinesiology	
Graduate Teaching Asst/Graduate Lecturer	30
Graduate Research Asst.	4
History	
Graduate Teaching Asst/Graduate Lecturer	27
Graduate Research Asst.	3
Philosophy	
Graduate Teaching Asst/Graduate Lecturer	22
Graduate Research Asst.	3
Political Science	
Graduate Teaching Asst/Graduate Lecturer	24
Graduate Research Asst.	4
Psychological Sciences	
Graduate Teaching Asst/Graduate Lecturer	50
Graduate Research Asst.	16
Sociology	
Graduate Teaching Asst/Graduate Lecturer	25
Graduate Research Asst.	12
Speech, Language, and Hearing Sciences	
Graduate Teaching Asst/Graduate Lecturer	16
Graduate Research Asst.	24
Visual & Performing Arts	
Graduate Teaching Asst/Graduate Lecturer	32
Graduate Administrative/Professional	8
Total College of Liberal Arts	723

* General Studies include: Interdisciplinary Studies, Counseling & Student Services, Women Studies, & Afro-American Studies Center

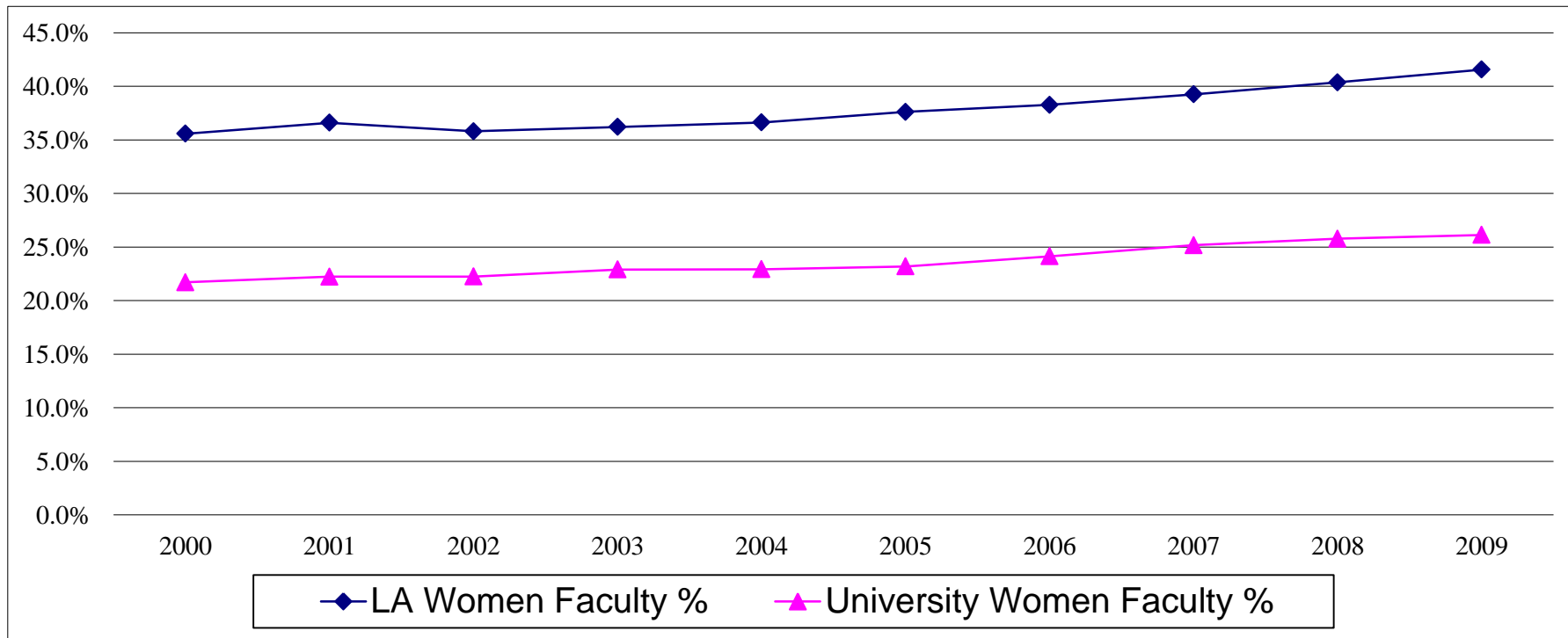
Tenured and Tenure Track Faculty Headcount by Gender

(for Fall Semester in Academic Years)

Data Digest 2009-10

College of Liberal Arts

Gender	2000	2001	2002	2003	2004	2005	2006	2007	2008	2009
Men	221	220	226	222	225	219	221	226	229	225
Women	122	127	126	126	130	132	137	146	155	160
Total Liberal Arts	343	347	352	348	355	351	358	372	384	385
Liberal Arts Women Faculty Percentage	35.6%	36.6%	35.8%	36.2%	36.6%	37.6%	38.3%	39.2%	40.4%	41.6%
University Women Faculty Percentage	21.7%	22.2%	22.2%	22.9%	22.9%	23.2%	24.1%	25.2%	25.8%	26.1%

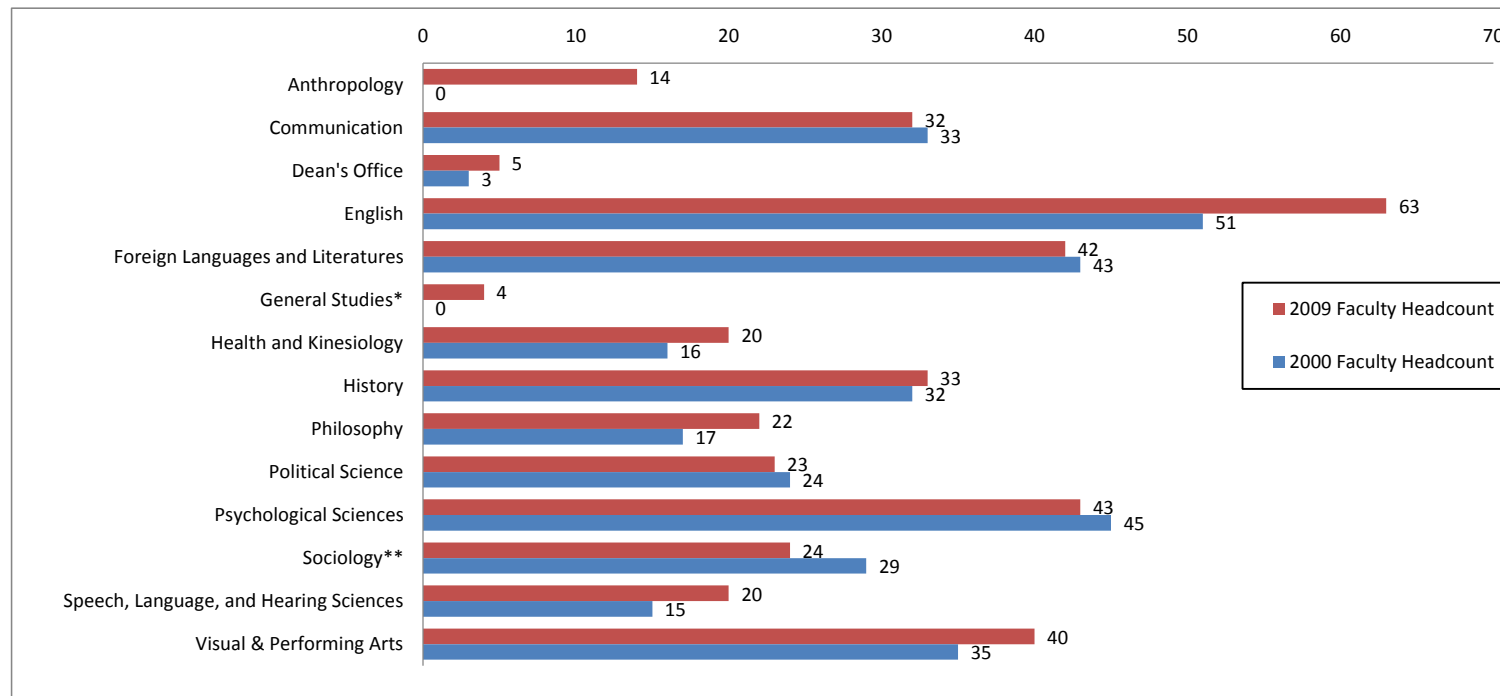


Source: OIR Faculty and Staff Data

Tenured and Tenure Track Faculty Headcount by Department
 (for Fall Semester in Academic Years)

Data Digest 2009-10
 College of Liberal Arts

Department	2000	2001	2002	2003	2004	2005	2006	2007	2008	2009
Anthropology	-	-	-	-	-	-	-	-	10	14
Communication	33	28	30	28	28	31	29	31	31	32
Dean's Office	3	3	3	3	3	3	4	4	4	5
English	51	54	56	56	59	57	64	64	66	63
Foreign Languages and Literatures	43	38	41	40	42	41	42	42	43	42
General Studies*	0	0	0	1	1	1	2	3	3	4
Health and Kinesiology	16	17	16	16	15	12	16	18	22	20
History	32	32	32	28	27	29	30	33	34	33
Philosophy	17	19	18	18	18	19	20	22	21	22
Political Science	24	25	26	26	27	27	23	22	23	23
Psychological Sciences	45	47	45	47	48	44	44	43	43	43
Sociology**	29	31	29	29	33	33	33	35	25	24
Speech, Language, and Hearing Sciences	15	16	16	17	17	18	18	19	20	20
Visual & Performing Arts	35	37	40	39	37	36	33	36	39	40
Total College of Liberal Arts	343	347	352	348	355	351	358	372	384	385



* General Studies include: Interdisciplinary Studies, Counseling & Student Services, Women Studies, & Afro-American Studies Center
 ** 1999-2007 data include Sociology and Anthropology

Liberal Arts

Race/Ethnicity	2002	2003	2004	2005	2006	2007	2008	2009
African American	13	14	15	15	14	16	19	20
Asian American	19	17	20	19	22	25	28	27
American Indian	2	2	1	1	1	0	0	0
Hispanic	7	9	10	10	10	11	12	12
White and Other	302	296	300	295	299	308	315	318
International	9	10	9	11	12	12	10	8
Total Faculty	352	348	355	351	358	372	384	385

Domestic

African American	3.8%	4.1%	4.3%	4.4%	4.0%	4.4%	5.1%	5.3%
Asian American	5.5%	5.0%	5.8%	5.6%	6.4%	6.9%	7.5%	7.2%
American Indian	0.6%	0.6%	0.3%	0.3%	0.3%	0.0%	0.0%	0.0%
Hispanic	2.0%	2.7%	2.9%	2.9%	2.9%	3.1%	3.2%	3.2%

Total Domestic Underrepresented 12.0% 12.4% 13.3% 13.2% 13.6% 14.4% 15.8% 15.6%

White and Other 88.0% 87.6% 86.7% 86.8% 86.4% 85.6% 84.2% 84.4%

International 2.6% 2.9% 2.5% 3.1% 3.4% 3.2% 2.6% 2.1%

University

Race/Ethnicity	2002	2003	2004	2005	2006	2007	2008	2009
African American	32	38	41	43	43	46	53	53
Asian American	166	175	183	196	222	244	258	275
American Indian	6	6	5	5	3	3	3	4
Hispanic	28	33	35	35	38	42	47	51
White and Other	1412	1411	1402	1393	1425	1434	1434	1442
International	60	83	101	135	101	103	95	93
Total Faculty	1,704	1,746	1,767	1,807	1,832	1,872	1,890	1,918

Domestic

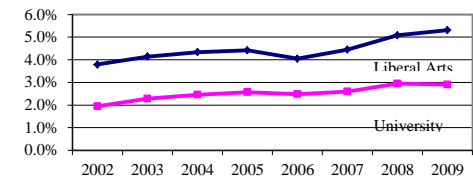
African American	1.9%	2.3%	2.5%	2.6%	2.5%	2.6%	3.0%	2.9%
Asian American	10.1%	10.5%	11.0%	11.7%	12.8%	13.8%	14.4%	15.1%
American Indian	0.4%	0.4%	0.3%	0.3%	0.2%	0.2%	0.2%	0.2%
Hispanic	1.7%	2.0%	2.1%	2.1%	2.2%	2.4%	2.6%	2.8%

Total Domestic Underrepresented 14.1% 15.2% 15.8% 16.7% 17.7% 18.9% 20.1% 21.0%

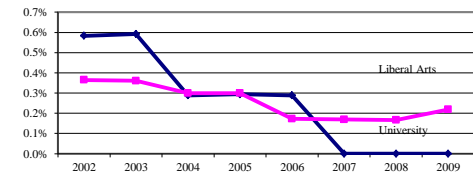
White and Other 85.9% 84.8% 84.2% 83.3% 82.3% 81.1% 79.9% 79.0%

International 3.5% 4.8% 5.7% 7.5% 5.5% 5.5% 5.0% 4.8%

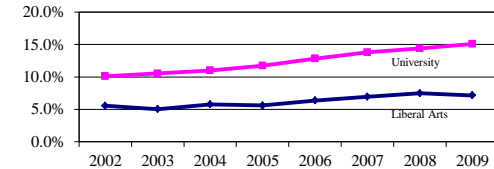
Percentage of African American Faculty



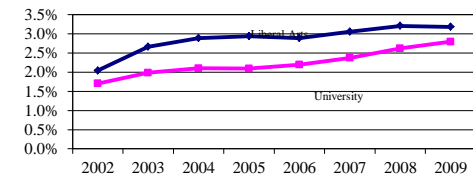
Percentage of American Indian Faculty



Percentage of Asian American Faculty



Percentage of Hispanic faculty



Source: OIR Faculty and Staff Data

Tenured & Tenure Track Faculty by Gender & Rank

Data Digest 2009-10

(for Fall Semester in Academic Years)

College of Liberal Arts

Rank	Gender	2000	2001	2002	2003	2004	2005	2006	2007	2008	2009
Tenured and Tenure Track Faculty											
Assistant Professors											
	Male	36	38	40	40	40	36	38	34	36	38
	Female	43	39	41	38	38	38	41	46	49	54
	Total	79	77	81	78	78	74	79	80	85	92
	% Male	46%	49%	49%	51%	51%	49%	48%	43%	42%	41%
	% Female	54%	51%	51%	49%	49%	51%	52%	58%	58%	59%
Associate Professors											
	Male	84	80	83	75	78	74	73	77	79	73
	Female	54	60	54	58	61	63	65	68	68	67
	Total	138	140	137	133	139	137	138	145	147	140
	% Male	61%	57%	61%	56%	56%	54%	53%	53%	54%	52%
	% Female	39%	43%	39%	44%	44%	46%	47%	47%	46%	48%
Professors											
	Male	101	102	103	107	107	109	110	115	114	114
	Female	25	28	31	30	31	31	31	32	38	39
	Total	126	130	134	137	138	140	141	147	152	153
	% Male	80%	78%	77%	78%	78%	78%	78%	78%	75%	75%
	% Female	20%	22%	23%	22%	22%	22%	22%	22%	25%	25%
Summary											
	Male	221	220	226	222	225	219	221	226	229	225
	% of Total	61%	62%	66%	64%	63%	62%	62%	61%	60%	58%
	Female	122	127	126	126	130	132	137	146	155	160
	% of Total	33%	36%	37%	36%	37%	38%	38%	39%	40%	42%
	Grand Total	365	353	343	348	355	351	358	372	384	385

Source: OIR Faculty and Staff Data

Tenured & Tenure Track Faculty by Race/Ethnicity & Rank

Data Digest 2009-10

(for Fall Semester in Academic Years)

College of Liberal Arts

Rank	Race/Ethnicity	2000	2001	2002	2003	2004	2005	2006	2007	2008	2009
Assistant Professors											
	White/Other	57	54	59	55	53	47	54	55	60	66
	African American	6	6	5	5	6	6	3	6	8	9
	Hispanic	4	3	2	1	2	3	2	1	1	1
	Asian American	2	1	6	6	7	6	8	9	8	8
	American Indian	1	1	1	1	0	0	0	0	0	0
	International	8	10	8	10	9	11	12	9	8	8
	Total Assistant Professors	78	75	81	78	77	73	79	80	85	92
	Underrepresented %	17%	15%	17%	17%	19%	21%	16%	20%	20%	20%
Associate Professors											
	White/Other	119	124	117	115	119	116	113	115	114	112
	African American	5	4	6	6	7	7	9	7	8	7
	Hispanic	3	4	5	6	6	5	6	8	8	8
	Asian American	9	7	8	6	7	9	10	12	15	13
	American Indian	1	0	0	0	0	0	0	0	0	0
	International	1	1	1	0	0	0	0	3	2	0
	Total Associate Professors	138	140	137	133	139	137	138	145	147	140
	Underrepresented %	13%	11%	14%	14%	14%	15%	18%	19%	21%	20%
Professors											
	White/Other	120	123	126	126	127	131	132	138	141	140
	African American	3	3	2	3	2	2	2	3	3	4
	Hispanic	0	0	0	2	2	2	2	2	3	3
	Asian American	2	3	5	5	6	4	4	4	5	6
	American Indian	1	1	1	1	1	1	1	0	0	0
	International	0	0	0	0	0	0	0	0	0	0
	Total Professors	126	130	134	137	138	140	141	147	152	153
	Underrepresented %	5%	5%	6%	8%	8%	6%	6%	6%	7%	8%
Summary											
	White/Other	296	301	302	296	299	294	299	308	315	318
	African American	14	13	13	14	15	15	14	16	19	20
	Hispanic	7	7	7	9	10	10	10	11	12	12
	Asian American	13	11	19	17	20	19	22	25	28	27
	American Indian	3	2	2	2	1	1	1	0	0	0
	International	9	11	9	10	9	11	12	12	10	8
	Total	342	345	352	348	354	350	358	372	384	385
	White/Other	296	301	302	296	299	294	299	308	315	318
	Underrepresented	46	44	50	52	55	56	59	64	69	67
	Total	342	345	352	348	354	350	358	372	384	385
	White/Other %	87%	87%	86%	85%	84%	84%	84%	83%	82%	83%
	Underrepresented %	13%	13%	14%	15%	16%	16%	16%	17%	18%	17%

Source: OIR Faculty and Staff Data

Faculty and Staff Headcount by Gender

(for Fall Semester in Academic Years)

Data Digest 2009-10

College of Liberal Arts

Classification	Gender	2000	2001	2002	2003	2004	2005	2006	2007	2008	2009
Tenured and Tenure Track Faculty	Female	122	127	126	126	130	132	137	146	155	160
	Male	221	220	226	222	225	219	221	226	229	225
Non-Tenure Track Faculty, Lecturers & Post Docs	Female	90	95	93	84	87	110	108	109	122	108
	Male	35	35	39	45	37	46	48	47	42	41
Administrative/Professional	Female	75	78	82	87	85	77	76	71	65	70
	Male	25	25	25	27	29	29	27	29	30	27
Clerical	Female	94	86	91	84	84	80	80	84	89	84
	Male	-	-	1	-	-	-	-	1	-	-
Service	Female	9	12	9	7	11	12	19	15	18	11
	Male	11	11	10	12	11	13	9	8	12	7
Graduate Student Staff	Female	431	465	493	484	488	473	469	470	458	419
	Male	317	283	294	289	307	304	319	321	304	304
Summary	Female	821	863	894	872	885	884	889	895	907	852
	Male	609	574	595	595	609	611	624	632	617	604
		57%	60%	60%	59%	59%	59%	59%	59%	60%	59%
		43%	40%	40%	41%	41%	41%	41%	41%	40%	41%
Grand Total		1,430	1,437	1,489	1,467	1,494	1,495	1,513	1,527	1,524	1,456

Source: OIR Faculty and Staff Data

Classification	Race/Ethnicity	2000	2001	2002	2003	2004	2005	2006	2007	2008	2009
Tenured and Tenure Track Faculty	White/Other	296	302	302	296	300	295	299	308	315	318
	African American	15	13	13	14	15	15	14	16	19	20
	Hispanic	7	7	7	9	10	10	10	11	12	12
	Asian American	13	12	19	17	20	19	22	25	28	27
	American Indian	3	2	2	2	1	1	1	0	0	0
	International	9	11	9	10	9	11	12	12	10	8
	Subtotal		343	347	352	348	355	351	358	372	384
Non-Tenure Track Faculty, Lecturers & Post Docs	White/Other	96	95	98	100	96	116	118	109	133	118
	African American	0	2	3	2	1	3	3	3	2	2
	Hispanic	8	6	9	10	10	10	13	12	5	4
	Asian American	4	8	6	5	5	8	9	8	7	10
	American Indian	0	0	0	0	0	1	1	1	1	0
	International	17	19	16	12	12	18	12	23	16	15
	Subtotal		125	130	132	129	124	156	156	156	164
A/P	White/Other	94	95	98	101	103	98	96	93	88	89
	African American	2	2	3	4	4	1	2	3	3	3
	Hispanic	2	1	2	2	2	1	1	2	2	2
	Asian American	2	2	2	3	3	2	1	0	1	2
	American Indian	0	1	0	0	0	1	1	1	1	0
	International	0	2	2	4	2	3	2	1	0	1
	Subtotal		100	103	107	114	114	106	103	100	95
Clerical	White/Other	86	79	87	79	79	74	73	78	81	76
	African American	2	1	1	1	1	1	1	1	1	1
	Hispanic	2	1	0	0	0	1	2	2	2	2
	Asian American	4	4	3	3	3	3	3	3	3	3
	American Indian	0	1	1	1	1	1	1	1	2	2
	International	0	0	0	0	0	0	0	0	0	0
	Subtotal		94	86	92	84	84	80	80	85	89
Service	White/Other	18	20	17	16	20	23	25	21	23	15
	African American	0	0	0	0	0	0	0	0	1	1
	Hispanic	0	0	0	0	0	0	0	0	1	1
	Asian American	1	1	1	2	2	2	3	2	3	1
	American Indian	1	1	1	1	0	0	0	0	0	0
	International	0	1	0	0	0	0	0	0	2	0
	Subtotal		20	23	19	19	22	25	28	23	30
Graduate Students	White/Other	460	461	485	482	479	479	501	512	484	445
	African American	24	24	28	28	29	30	40	33	34	33
	Hispanic	21	25	24	17	19	20	17	24	24	29
	Asian American	17	13	15	11	13	14	15	24	28	25
	American Indian	4	3	4	2	2	2	1	2	2	2
	International	222	222	231	233	253	232	214	196	190	189
	Subtotal		748	748	787	773	795	777	788	791	762
Grand Total		1,430	1,437	1,489	1,467	1,494	1,495	1,513	1,527	1,524	1,456
Total Underrepresented Staff		131	128	142	132	140	145	160	173	180	180
Underrepresented Staff as Percent of Total		11.1%	10.8%	11.5%	10.9%	11.5%	11.8%	12.6%	13.4%	13.8%	14.5%

Source: OIR Faculty and Staff Data

Tenure Track and Clinical Faculty Searches

Data Digest 2009-10
College of Liberal Arts

Searches/Hires/Resignations	2003-04	2004-05	2005-06	2006-07	2007-08	2008-09	2009-10
Searches Undertaken	23	23	23	26	27	21	6
Searches Completed*	21	24	29	28	28	22	5
Number of Men Faculty Hired	11 (52%)	13 (54%)	13 (45%)	15 (54%)	8 (29%)	9 (41%)	3 (60%)
Number of Women Faculty Hired	10 (48%)	11 (46%)	16 (55%)	13 (46%)	20 (71%)	13 (59%)	2 (40%)
Underrepresented Faculty Hired	6	6	6	4	6	7	1
Resignation/Retirements	14	21	18	15	13	16	13
Men Faculty	10 (71%)	12 (57%)	12 (67%)	8 (53%)	7 (54%)	12 (75%)	8 (62%)
Women Faculty	4 (29%)	9 (43%)	6 (33%)	7 (47%)	6 (46%)	4 (25%)	5 (38%)

Figures include deans and department heads.

* including a spousal hire

Source: Liberal Arts Dean's Office

	TO ASSOCIATE								
	MEN			WOMEN			UNDERREPRESENTED GROUPS		
	<u>Nominated*</u>	<u>Promoted</u>	<u>Success Rate</u>	<u>Nominated</u>	<u>Promoted</u>	<u>Success Rate</u>	<u>Nominated</u>	<u>Promoted</u>	<u>Success Rate</u>
2005-06	4	4	100%	5	5	100%	5	5	100%
2006-07	12	10	83%	7	6	86%	5	4	80%
2007-08	5	5	100%	7	7	100%	4	4	100%
2008-09	4	3	75%	4	4	100%	1	1	100%
2009-2010	7	4	57%	9	6	67%	6	4	67%
Total	32	26	81%	32	28	88%	21	18	86%

	TO PROFESSOR								
	MEN			WOMEN			UNDERREPRESENTED GROUPS		
	<u>Nominated</u>	<u>Promoted</u>	<u>Success Rate</u>	<u>Nominated</u>	<u>Promoted</u>	<u>Success Rate</u>	<u>Nominated</u>	<u>Promoted</u>	<u>Success Rate</u>
2005-06	4	3	75%	1	1	100%	1	0	0%
2006-07	8	8	100%	4	2	50%	0	0	-
2007-08	2	1	50%	6	5	83%	2	2	100%
2008-09	7	6	86%	4	4	100%	3	2	67%
2009-10	7	5	71%	7	7	100%	4	3	75%
Total	28	23	82%	22	19	86%	10	7	70%

	COMBINED RANK								
	MEN			WOMEN			UNDERREPRESENTED GROUPS		
	<u>Nominated</u>	<u>Promoted</u>	<u>Success Rate</u>	<u>Nominated</u>	<u>Promoted</u>	<u>Success Rate</u>	<u>Nominated</u>	<u>Promoted</u>	<u>Success Rate</u>
2005-06	8	7	88%	6	6	100%	6	5	83%
2006-07	20	18	90%	11	8	73%	5	4	80%
2007-08	7	6	86%	13	12	92%	6	6	100%
2008-09	11	9	82%	8	8	100%	4	3	75%
2009-10	14	9	64%	16	13	81%	10	7	70%
Total	60	49	82%	54	47	87%	31	25	81%

Source: College of Liberal Arts Dean's Office

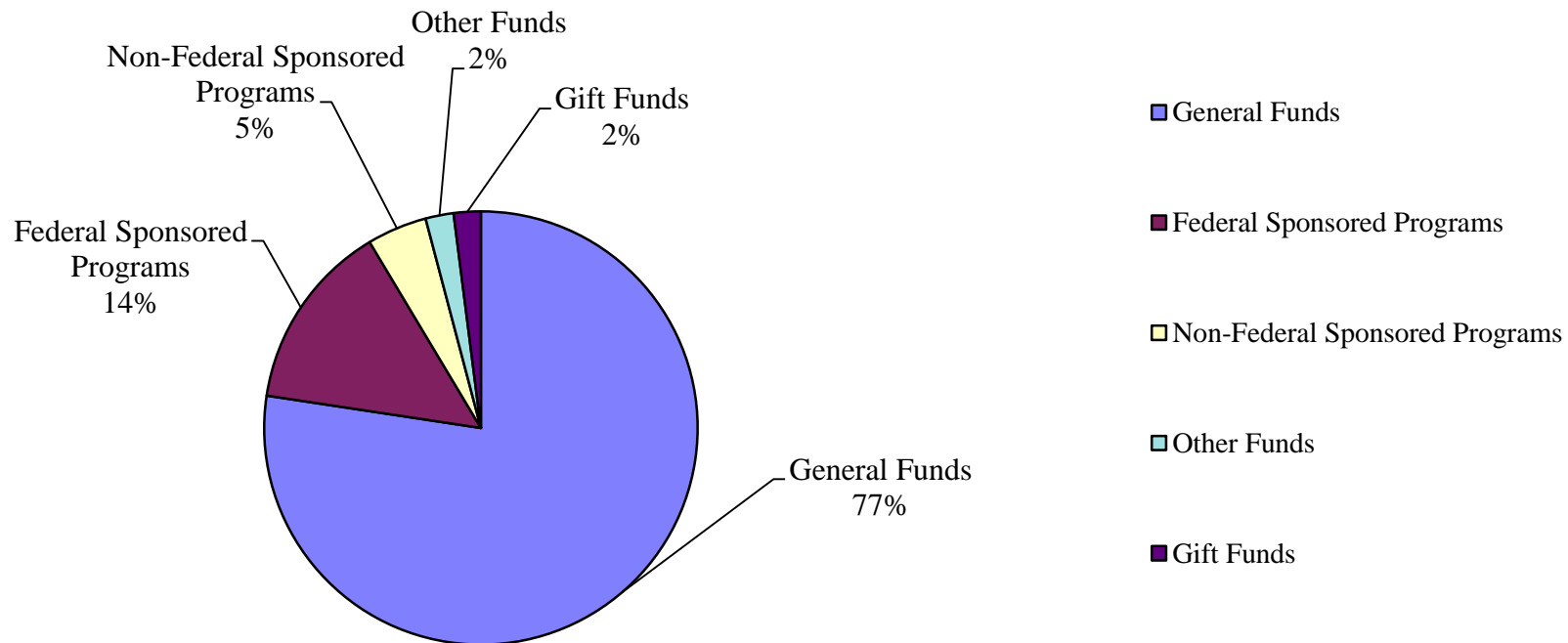


Data Digest 2009-10
College of Liberal Arts

Finances

Source	2003-04	2004-05	2005-06	2006-07	2007-08	2008-09
General Funds	\$43,001,862	\$45,689,778	\$48,489,619	\$51,175,069	\$53,885,211	\$54,783,146
Federal Sponsored Programs	\$6,981,549	\$8,122,749	\$6,811,765	\$6,891,698	\$8,371,383	\$9,931,361
Non-Federal Sponsored Programs	\$2,655,745	\$2,361,412	\$2,395,260	\$2,395,100	\$2,500,481	\$3,166,326
Other Funds	\$2,013,498	\$2,135,775	\$1,898,915	\$1,110,995	\$1,281,044	\$1,481,555
Gift Funds	\$478,958	\$640,242	\$971,047	\$654,409	\$639,125	\$1,427,862
Total	\$55,131,612	\$58,949,956	\$60,566,606	\$62,227,271	\$66,677,244	\$70,790,250

2008-09 Expenditures



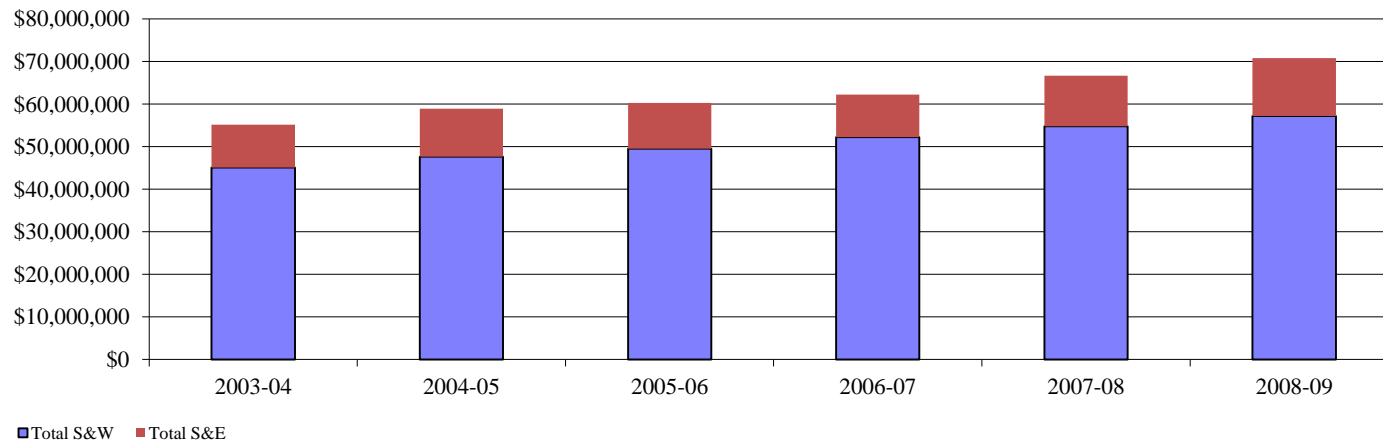
2008-09 is the most recent completed fiscal year data
 Source: DSS Transaction Summary Data/SAP All Postings Report

Total Annual Expenditures by Category

Data Digest 2009-10

College of Liberal Arts

Category	Source	2003-04	2004-05	2005-06	2006-07	2007-08	2008-09
S&W	General Funds	\$40,015,048	\$42,206,064	\$44,392,109	\$46,578,837	\$49,131,928	\$50,855,868
	Federal Sponsored Programs	\$3,405,168	\$3,775,872	\$3,389,367	\$3,806,630	\$3,921,394	\$4,310,388
	Non-Federal Sponsored Programs	\$1,074,096	\$1,069,892	\$923,690	\$1,220,739	\$1,085,578	\$1,319,408
	Gift Funds	\$120,996	\$141,963	\$206,320	\$206,320	\$192,746	\$242,062
	Other Funds	\$490,534	\$448,616	\$581,608	\$391,830	\$464,192	\$478,325
	Total S&W	\$45,105,842	\$47,642,407	\$49,493,094	\$52,204,356	\$54,795,838	\$57,206,051
S&E	General Funds	\$2,986,814	\$3,483,714	\$4,097,510	\$4,596,232	\$4,753,283	\$3,927,278
	Federal Sponsored Programs	\$3,576,381	\$4,346,877	\$3,422,398	\$3,085,068	\$4,449,989	\$5,620,973
	Non-Federal Sponsored Programs	\$1,583,198	\$1,291,520	\$1,471,570	\$1,174,360	\$1,414,903	\$1,846,918
	Gift Funds	\$357,512	\$498,279	\$448,090	\$448,090	\$446,379	\$1,185,800
	Other Funds	\$1,522,964	\$1,687,159	\$1,317,307	\$719,165	\$816,852	\$1,003,230
	Total S&E	\$10,026,869	\$11,307,549	\$10,756,875	\$10,022,915	\$11,881,406	\$13,584,199
Total		\$55,132,711	\$58,949,956	\$60,249,969	62,227,271	66,677,244	70,790,250



2008-09 is the most recent completed fiscal year data

Source: DSS Transaction Summary Data/SAP All Postings Report

Total General Fund Expenditures

Data Digest 2009-10

College of Liberal Arts

Category	Type	2003-04	2004-05	2005-06	2006-07	2007-08	2008-09
S&W	Faculty	\$22,891,369	\$24,218,800	\$25,827,266	\$27,363,789	\$29,830,128	\$31,553,620
	Visiting Faculty/Lecturer/etc.	\$2,120,352	\$2,342,602	\$2,965,253	\$3,397,720	\$3,051,295	\$3,019,899
	Post Doctoral				\$10,377	\$93,183	\$39,943
	A/P	\$4,034,432	\$4,178,987	\$4,022,047	\$3,579,537	\$3,810,609	\$3,898,646
	Clerical	\$1,837,271	\$1,973,625	\$1,900,719	\$2,087,104	\$2,036,869	\$2,127,792
	Service	\$344,050	\$344,553	\$347,348	\$445,670	\$311,488	\$349,865
	Graduate Students	\$8,605,382	\$8,942,117	\$9,139,924	\$9,653,760	\$9,675,390	\$9,652,356
	Students	\$182,192	\$205,379	\$189,552	\$40,880	\$71,748	\$190,219
	Unclassified S&W					\$251,218	\$23,528
Total S&W		\$40,015,048	\$42,206,064	\$44,392,109	\$46,578,837	\$49,131,928	\$50,855,868
S&E	Equipment	\$896,379	\$887,509	\$1,434,824	\$1,072,215	\$1,245,200	\$783,874
	Maintenance	\$128,593	\$134,090	\$106,442	\$82,627	\$170,230	\$138,966
	Postage & Shipping	\$88,382	\$87,572	\$72,211	\$77,186	\$5,395	\$1,625
	Printing & Office Supplies	\$488,393	\$544,589	\$536,629	\$507,375	\$671,672	\$532,275
	Rental & Maintenance	\$95,464	\$82,755	\$73,827	\$92,956	\$11,408	\$60,322
	Scholarships & Awards	\$4,382	\$35,638	\$51,351	\$55,884	\$73,979	\$22,523
	Services & Fees	\$246,181	\$293,488	\$361,109	\$495,123	\$616,223	\$439,154
	Supplies	\$56,972	\$89,079	\$223,393	\$174,702	\$225,790	\$161,680
	Telephone & Tolls	\$356,592	\$376,214	\$414,005	\$419,553	\$496,365	\$494,548
	Travel	\$625,476	\$952,780	\$823,719	\$1,461,613	\$1,140,722	\$1,173,155
	Other S&E				\$156,998	\$96,299	\$119,156
Total S&E		\$2,986,814	\$3,483,714	\$4,097,510	\$4,596,232	\$4,753,283	\$3,927,278
Total		\$43,001,862	\$45,689,778	\$48,489,619	\$51,175,069	\$53,885,211	\$54,783,146

2008-09 is the most recent completed fiscal year data

Source: DSS Transaction Summary Data/SAP All Postings Report

Total Gift Fund Expenditures

Data Digest 2009-10

College of Liberal Arts

Category	Type	2003-04	2004-05	2005-06	2006-07	2007-08	2008-09
S&W	Faculty	\$30,489	\$32,056	\$66,715	\$89,591	\$82,667	\$116,976
	Visiting Faculty		\$2,635	\$10,000			\$4,149
	A/P	\$26,602	\$34,249	\$21,856	\$23,260	\$27,864	\$19,430
	Clerical	\$7,096	\$5,009	\$5,233	\$6,364	\$351	\$312
	Service & Other	\$4,614	\$14,987	\$18,200	\$26,286	\$1,316	\$11,652
	Graduate Students	\$27,577	\$22,540	\$19,537	\$19,015	\$28,785	\$1,731
	Students	\$684	\$4,560	\$25,828	\$628	\$5,800	\$18,717
	Fringe Benefits	\$23,934	\$25,927	\$36,130	\$41,175	\$41,320	\$65,900
	Unclassified S&W					\$4,643	\$3,195
Total S&W		\$120,996	\$141,963	\$203,499	\$206,319	\$192,746	\$242,062
S&E	Equipment	\$34,137	\$194,858	\$35,347	\$141,260	\$31,054	\$47,615
	Maintenance	\$12,677	\$3,219	\$2,765	\$8,700	\$1,352	\$969
	Postage & Shipping	\$5,756	\$7,024	\$10,654	\$12,392	\$10,873	\$10,883
	Printing & Office Supplies	\$33,776	\$35,241	\$49,430	\$40,151	\$36,668	\$41,064
	Rental & Maintenance	\$5,277	\$2,406	\$4,868	\$2,376	\$6,861	\$4,935
	Scholarships & Awards	\$26,589	\$30,468	\$11,173	\$18,712	\$77,994	\$60,182
	Services & Fees	\$48,579	\$42,142	\$70,670	\$41,631	\$47,710	\$662,958
	Supplies	\$5,162	\$11,617	\$25,519	\$18,100	\$32,571	\$65,159
	Telephone & Tolls	\$4,396	\$5,360	\$7,311	\$6,505	\$6,552	\$7,808
	Travel	\$79,344	\$83,063	\$106,280	\$129,757	\$179,981	\$263,346
	Other S&E	\$101,819	\$82,881	\$443,531	\$28,506	\$14,763	\$20,881
Total S&E		\$357,512	\$498,279	\$767,548	\$448,090	\$446,379	\$1,185,800
Total		\$478,508	\$640,242	\$971,047	\$654,409	\$639,125	\$1,427,862

Note: Fund 707 is excluded from data

2008-09 is the most recent completed fiscal year data

Source: DSS Transaction Summary Data/SAP All Postings Report

Total Sponsored Program Expenditures

Data Digest 2009-10

College of Liberal Arts

Category	Type	2002-03	2003-04	2004-05	2005-06	2006-07	2007-08	2008-09
S&W	Faculty	\$1,405,000	\$1,369,454	\$1,495,475	\$1,425,745	\$1,959,535	\$2,077,847	\$2,023,325
	Visiting Faculty/Lecturer/etc.	\$18,600	\$11,246	\$18,850		\$10,565	\$3,514	
	Post Doctoral	\$9,800	\$24,470	\$16,396	\$17,107	\$71,561	\$137,111	\$228,095
	A/P	\$294,246	\$500,472	\$492,801	\$398,796	\$288,775	\$287,607	\$218,323
	Clerical	\$16,028	\$10,451	\$2,460	\$2,023	\$10,306	\$16,620	\$27,819
	Service	\$136,042	\$174,203	\$175,409	\$177,097	\$264,628	\$234,542	\$326,050
	Graduate Students	\$1,389,595	\$1,345,209	\$1,454,125	\$1,285,742	\$1,414,825	\$1,094,509	\$1,454,941
	Students*	\$188,785	\$160,510	\$193,258	\$151,524	\$1,148	\$40,765	\$103,009
	Fringe Benefits	\$807,937	\$879,449	\$993,134	\$855,023	\$1,005,646	\$1,055,661	\$1,254,435
	Instructor	\$1,360	\$3,800	\$3,856	\$0	\$381		
	Unclassified S&W						\$58,796	-\$6,201
Total S&W		\$4,267,393	\$4,479,264	\$4,845,764	\$4,313,057	\$5,027,370	\$5,006,972	\$5,629,796
S&E	Equipment	\$308,293	\$264,185	\$370,471	\$328,830	\$89,415	\$388,560	\$339,934
	Maintenance	\$5,232	\$15,086	\$7,387	\$5,391	\$3,989	\$8,480	\$4,742
	Postage & Shipping	\$13,129	\$55,009	\$26,316	\$10,510	\$8,978	\$10,881	\$11,807
	Printing & Office Supplies	\$57,342	\$113,560	\$63,803	\$31,057	\$22,378	\$40,754	\$86,569
	Rental & Maintenance	\$14,553	\$18,413	\$22,624	\$22,468	\$12,172	\$12,576	\$5,995
	Scholarships & Awards	\$967,159	\$1,316,246	\$1,184,587	\$1,245,140	\$911,690	\$1,052,134	\$1,280,424
	Services & Fees	\$1,542,535	\$1,159,856	\$1,444,783	\$883,010	\$721,338	\$1,160,548	\$2,372,793
	Supplies	\$184,821	\$171,650	\$190,620	\$254,823	\$207,802	\$425,955	\$277,355
	Telephone & Tolls	\$6,777	\$5,018	\$7,582	\$6,122	\$5,326	\$3,784	\$5,490
	Travel	\$226,118	\$296,016	\$380,863	\$239,151	\$188,375	\$398,068	\$494,829
	Other S&E	\$72,921	\$26,957	\$37,296	\$49,501	\$51,181	\$26,525	\$60,593
	F&A	\$1,521,326	\$1,717,581	\$1,902,066	\$1,817,965	\$2,036,784	\$2,336,627	\$2,527,360
	Total S&E		\$4,920,206	\$5,159,577	\$5,638,398	\$4,893,968	\$4,259,428	\$5,864,892
Total		\$9,187,599	\$9,638,841	\$10,484,162	\$9,207,025	\$9,286,798	\$10,871,864	\$13,097,687

*Student wages included in Service category with conversion to SAP in 2007

2008-09 is the most recent completed fiscal year data

Source: DSS Transaction Summary Data/SAP All Postings Report

Expenditures by Type & Source

Data Digest 2009-10

College of Liberal Arts

Category	Type	General Funds	Federal	Non-Federal	Gift Funds	Other Funds	Total 2008-09
			Sponsored Programs	Sponsored Programs			
S&W	Faculty	\$31,553,620	\$1,718,307	\$305,018	\$116,976	\$100,224	\$33,794,145
	Visiting Faculty/Lecturer	\$3,019,899			\$4,149	\$7,845	\$3,031,893
	Post Doctoral	\$39,943	\$228,095				\$268,038
	A/P	\$3,898,646	\$141,836	\$76,487	\$19,430	\$61,817	\$4,198,216
	Clerical	\$2,127,792	\$10,483	\$17,336	\$312	\$63,041	\$2,218,964
	Service	\$349,865	\$259,229	\$66,821	\$11,652	\$3,097	\$690,664
	Graduate Students	\$9,652,356	\$801,291	\$653,650	\$1,731	\$3,251	\$11,112,279
	Students	\$190,219	\$82,173	\$20,836	\$18,717	\$68,959	\$380,904
	Fringe Benefits		\$1,068,858	\$185,577	\$65,900	\$169,444	\$1,489,779
	Unclassified S&W	\$23,528	\$116	-\$6,317	\$3,195	\$647	
Total S&W	\$50,855,868	\$4,310,388	\$1,319,408	\$242,062	\$478,325	\$57,206,051	
S&E	Equipment	\$783,874	\$335,376	\$4,558	\$47,615	\$127,611	\$1,299,034
	Maintenance	\$138,966	\$4,228	\$514	\$969	\$27,464	\$172,141
	Postage & Shipping	\$1,625	\$5,260	\$6,547	\$10,883	\$5,551	\$29,866
	Printing & Office Supplies	\$532,275	\$36,298	\$50,271	\$41,064	\$67,670	\$727,578
	Rental & Maintenance	\$60,322	\$5,817	\$178	\$4,935	\$24,153	\$95,405
	Scholarships & Awards	\$22,523	\$136,329	\$1,144,095	\$60,182	\$2,160	\$1,365,289
	Services & Fees	\$439,154	\$2,103,930	\$268,863	\$662,958	\$128,912	\$3,603,817
	Supplies	\$161,680	\$218,634	\$58,721	\$65,159	\$526,452	\$1,030,646
	Telephone & Tolls	\$494,548	\$928	\$4,562	\$7,808	\$20,034	\$527,880
	Travel	\$1,173,155	\$348,499	\$146,330	\$263,346	\$57,732	\$1,989,062
	Other S & E	\$119,156	\$9,206	\$51,387	\$20,881	\$15,491	\$216,121
	F&A		\$2,416,468	\$110,892			\$2,527,360
	Total S&E	\$3,927,278	\$5,620,973	\$1,846,918	\$1,185,800	\$1,003,230	\$13,584,199
Total	\$54,783,146	\$9,931,361	\$3,166,326	\$1,427,862	\$1,481,555	\$70,790,250	

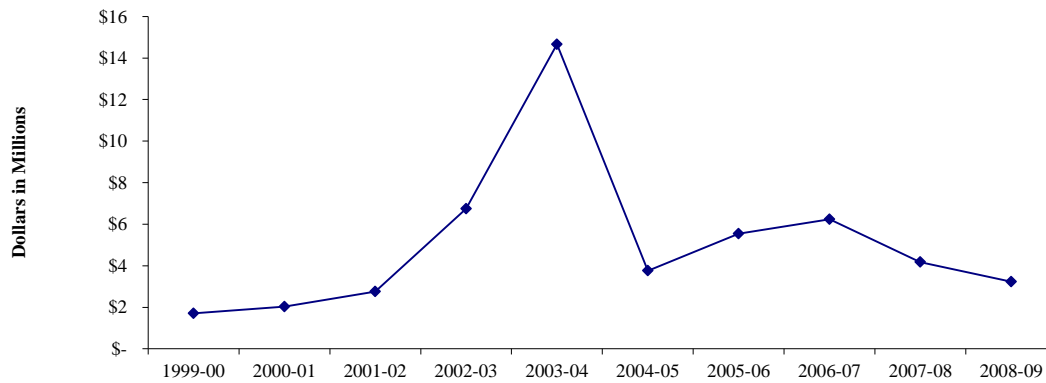
2008-09 is the most recent completed fiscal year data

Source: DSS Transaction Summary Data/SAP All Postings Report

Gift Category	1999-00	2000-01	2001-02	2002-03	2003-04	2004-05	2005-06	2006-07	2007-08	2008-09
Cash/Securities	\$ 903,392	\$ 1,573,028	\$ 1,435,361	\$ 6,009,492	\$ 2,251,133	\$ 3,085,543	\$ 3,098,494	\$ 2,650,065	\$ 1,330,702	\$ 2,056,986
Real Estate	\$ -	\$ -	\$ -	\$ -	\$ 2,548,509	\$ -	\$ -	\$ -	\$ -	\$ -
Gifts-in-Kind	\$ 78,944	\$ 80,389	\$ 100,225	\$ 11,155	\$ 55,824	\$ 502,367	\$ 333,986	\$ 45,100	\$ 11,491	\$ 40,991
Irrevocable Deferred	\$ 342,909	\$ 17,545	\$ 67,924	\$ 470,798	\$ 5,000,000	\$ 53,150	\$ 52,861	\$ 3,833,240	\$ 817,795	\$ 1,423,862
Pledge Balances	\$ 379,705	\$ 367,904	\$ 1,272,017	\$ 451,188	\$ 4,928,675	\$ 2,248,069	\$ 3,370,645	\$ 392,861	\$ 2,207,120	\$ 705,243
Less Prior Year Pledge Payments			\$ (119,413)	\$ (198,530)	\$ (122,707)	\$ (2,125,579)	\$ (1,311,364)	\$ (685,013)	\$ (189,176)	\$ (986,507)
Total	\$ 1,704,950	\$ 2,038,866	\$ 2,756,114	\$ 6,744,102	\$ 14,661,434	\$ 3,763,550	\$ 5,544,622	\$ 6,236,253	\$ 4,177,932	\$ 3,240,575

FY2001-02 thru Present: Campaign for Purdue counting periods; prior year pledge payments of The Campaign for Purdue were deducted from total production to accurately reflect fund-raising totals during the campaign.

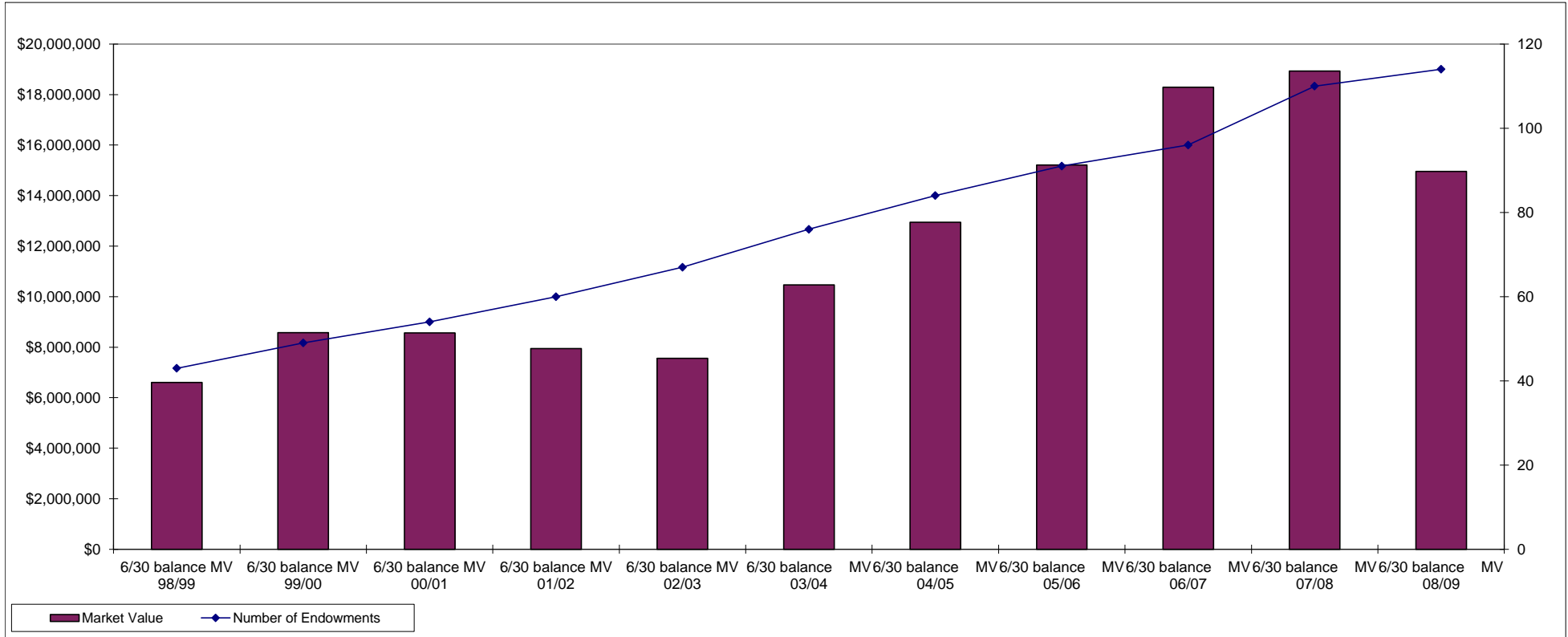
Trend in Giving 1999-00 through 2008-09



2008-09 is the most recent completed fiscal year data

Source: University Development Office

Endowments & CYP Investments	6/30 balance MV 98/99	6/30 balance MV 99/00	6/30 balance MV 00/01	6/30 balance MV 01/02	6/30 balance MV 02/03	6/30 balance MV 03/04	6/30 balance MV 04/05	6/30 balance MV 05/06	6/30 balance MV 06/07	6/30 balance MV 07/08	6/30 balance MV 08/09
Market Value	\$6,600,470	\$8,577,946	\$8,562,575	\$7,946,005	\$7,558,333	\$10,465,338	\$12,943,230	\$15,211,979	\$18,293,525	\$18,932,388	\$14,957,419
Number of Endowments	43	49	54	60	67	76	84	91	96	110	114

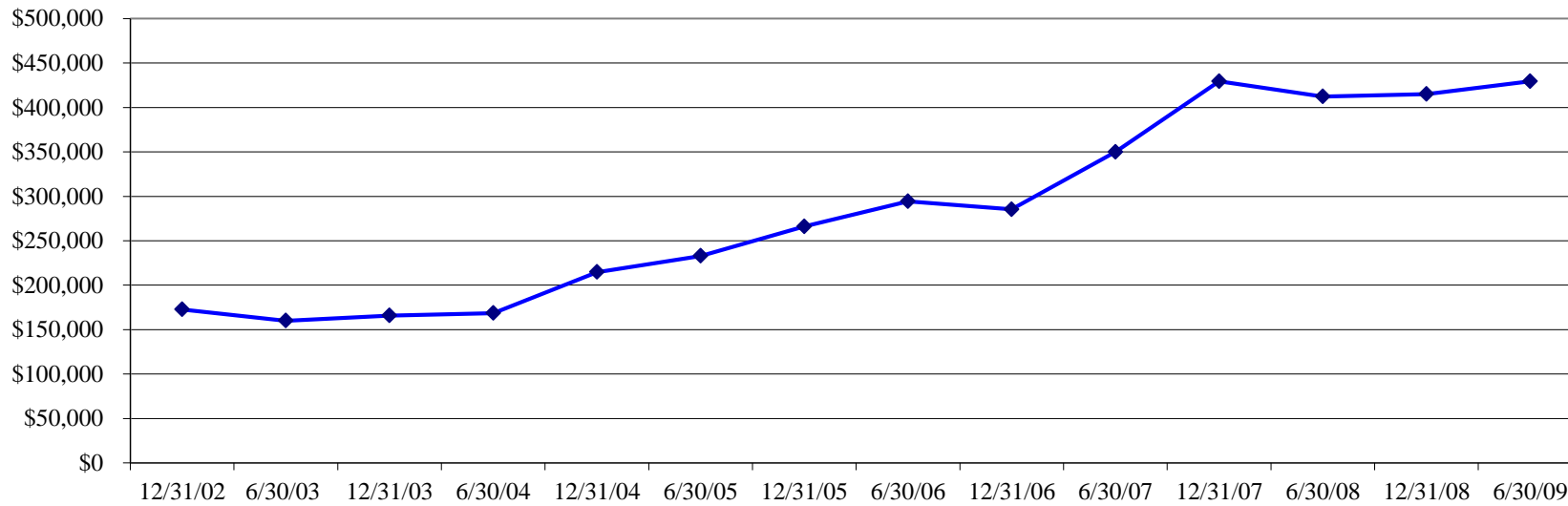


2008-09 is the most recent completed fiscal year data

Source: Semi-annual Endowment Reports

	02/03		03/04		04/05		05/06		06/07		07/08		08/09	
Endowments & CYP Investments	12/31/02	6/30/03	12/31/03	6/30/04	12/31/04	6/30/05	12/31/05	6/30/06	12/31/06	6/30/07	12/31/07	6/30/08	12/31/08	6/30/09
Payments	\$172,604	\$159,994	\$165,822	\$168,595	\$214,725	\$232,885	\$266,030	\$294,200	\$285,296	\$349,909	\$429,516	\$412,427	\$415,003	\$429,516

Income Payments
(6 month period)



2008-09 is the most recent completed fiscal year data
Source: Semi-annual Endowment Reports



Data Digest 2009-10
College of Liberal Arts

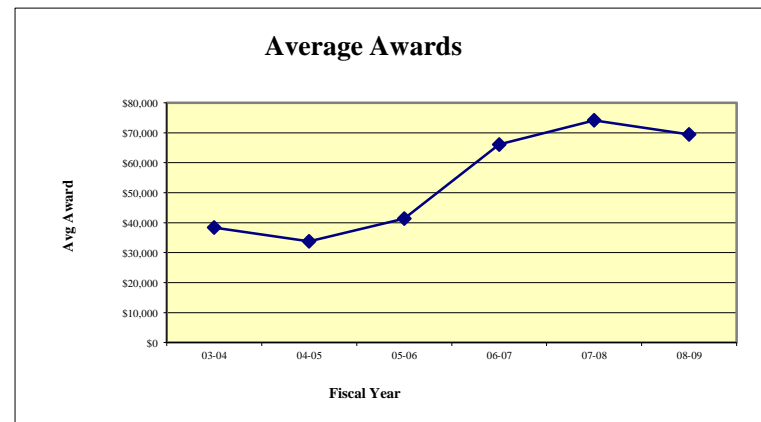
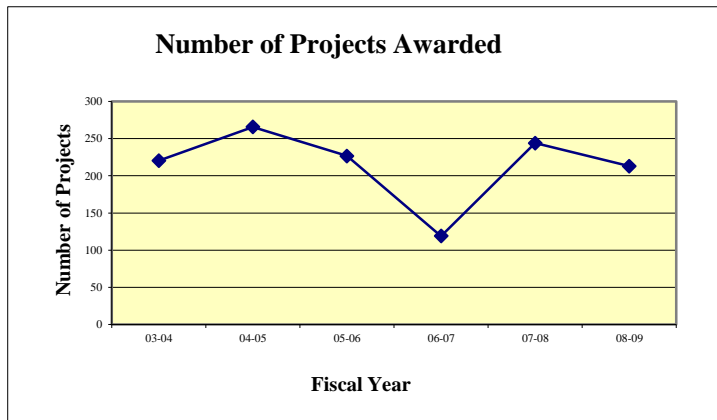
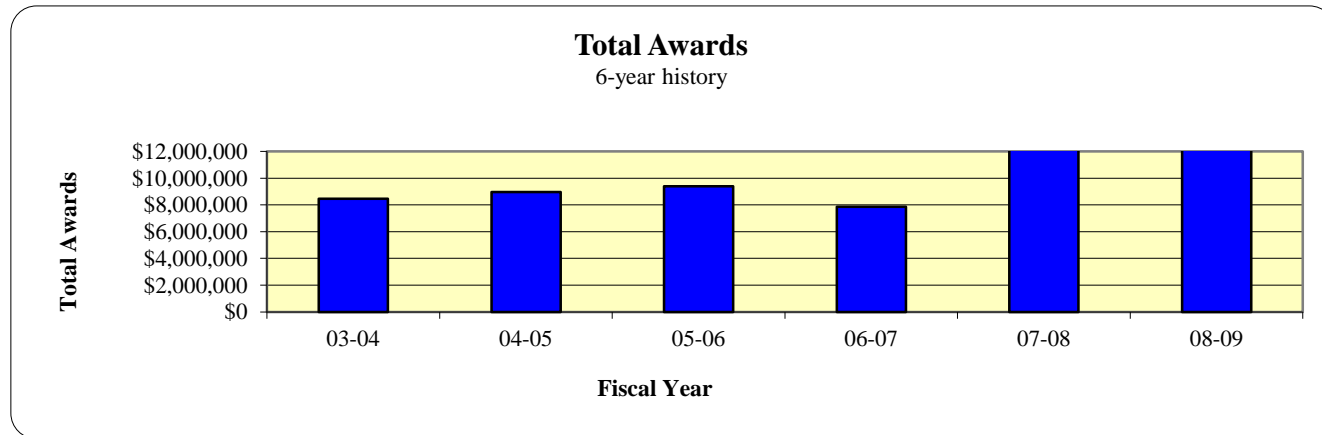
Research

Total Annual Sponsored Program Awards

2009-10 Data Digest

College of Liberal Arts

	03-04	04-05	05-06	06-07	07-08	08-09
Grant Projects -- 6-year history						
Total Awards	\$8,456,283	\$8,964,772	\$9,383,616	\$7,863,859	\$18,095,993	\$14,787,208
Number of Projects	220	266	227	119	244	213
Avg Award	\$38,375	\$33,747	\$41,407	\$66,083	\$74,164	\$69,424



08-09 is the most recent completed fiscal year data

Source: Sponsored Program Services

Total Sponsored Program Awards by Sponsor

2009-10 Data Digest

College of Liberal Arts

Sponsor	1999-00	2000-01	2001-02	2002-03	2003-04	2004-05	2005-06	2006-07	2007-08	2008-09
DHHS	\$3,100,891	\$3,499,622	\$5,559,209	\$5,504,768	\$5,617,424	\$5,158,981	\$5,093,953	\$5,222,221	\$9,919,667	\$9,091,313
NSF	\$179,923	\$610,554	\$1,169,615	\$495,700	\$505,505	\$863,043	\$954,323	\$629,849	\$2,284,516	\$2,008,713
DOEd*	\$2,000	\$3,000	\$2,000	\$246,852	\$76,940					
DOD	\$823,627	\$821,016	\$842,355	\$864,449	\$130,602	\$266,803	\$659,874	\$615,843	\$354,481	\$821,169
Other Federal	\$275,262	\$761,477	\$217,150	\$209,407	\$18,579	\$172,338	\$90,941	\$42,850	\$844,801	\$215,391
Total Federal	\$4,381,703	\$5,695,669	\$7,790,329	\$7,321,176	\$6,349,050	\$6,461,165	\$6,799,091	\$6,510,763	\$13,403,465	\$12,136,586
Industrial	\$254,047	\$287,895	\$1,217,718	\$589,895	\$196,752	\$693,625	\$822,464	\$437,026	\$1,289,692	\$628,447
ST,LCL,FGN Govt's, & Misc.**	\$1,581,678	\$1,425,786	\$1,088,765	\$1,710,242	\$1,910,481	\$1,809,982	\$1,762,061			
State/LCL Govt.								\$208,250	\$1,019,581	\$82,389
FGN Govt								\$106,250	\$15,101	\$131,255
Other PU SPS								\$601,570	\$2,368,155	\$1,808,529
Total Non-Federal	\$1,835,725	\$1,713,681	\$2,306,483	\$2,300,137	\$2,107,233	\$2,503,607	\$2,584,525	\$1,353,096	\$4,692,529	\$2,650,620
Total Liberal Arts	\$6,217,428	\$7,409,350	\$10,096,812	\$9,621,313	\$8,456,283	\$8,964,772	\$9,383,616	\$7,863,859	\$18,095,994	\$14,787,206

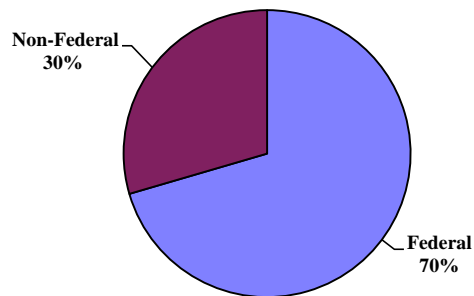
*Beginning with 2006-07, DOEd awards included in "Other Federal" Category

**ST,LCL, FGN Govt's, Other PU, Misc included in one category through 2005-06

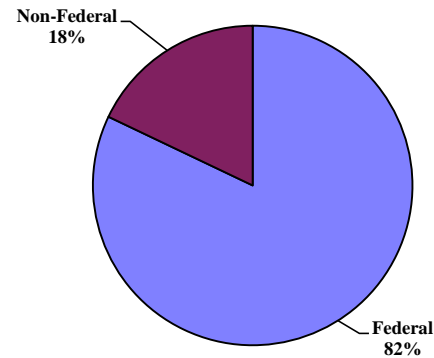
2008-09 is the most recent completed fiscal year data

Source: OnePurdue Business Warehouse

1998-99 Sponsored Program Awards

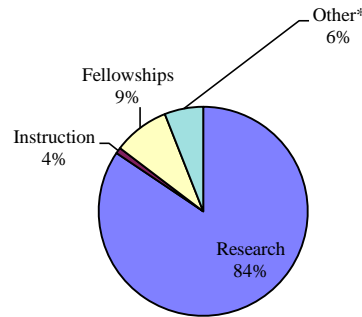


2007-08 Sponsored Program Awards



	1999-00	2000-01	2001-02	2002-03	2003-04	2004-05	2005-06	2006-07	2007-08	2008-09
Awards by Program										
Research	\$4,515,660	\$6,091,230	\$8,854,472	\$7,004,330	\$6,109,017	\$6,476,713	\$7,386,882	\$7,048,453	\$14,224,669	\$12,482,265
Instruction	\$564,130	\$163,133	\$475,018	\$245,200	\$472,580	\$361,336	\$6,450	\$235,383	\$232,333	\$137,141
Fellowships	\$948,073	\$736,570	\$520,577	\$1,257,572	\$1,071,315	\$1,115,979	\$1,030,681	\$111,784	\$2,052,520	\$1,283,241
Other*	\$189,565	\$418,417	\$246,745	\$1,114,211	\$803,371	\$1,010,744	\$959,603	\$468,238	\$1,586,471	\$884,561
Total Awards	\$6,217,428	\$7,409,350	\$10,096,812	\$9,621,313	\$8,456,283	\$8,964,772	\$9,383,616	\$7,863,858	\$18,095,993	\$14,787,208

2008-09 Sponsored Program Awards



* Other includes: Service, Outreach, and Engagement
 2008-09 is the most recent completed fiscal year data

Source: OnePurdue Business Warehouse

Total Sponsored Program Awards by Department

2009-10 Data Digest

College of Liberal Arts

Department	1999-00	2000-01	2001-02	2002-03	2003-04	2004-05	2005-06	2006-07	2007-08	2008-09
Administration	\$20,000	\$26,775	\$27,742	\$14,160	\$32,014	\$102,804	\$29,039	\$20,635	\$19,430	\$7,500
Afro-American Studies								\$2,500		
American Studies	\$174,992	\$96,314	\$94,469	\$126,894	\$143,282	\$195,438	\$110,233		\$44,368	\$151,626
Anthropology										\$274,682
Communication	\$102,241	\$84,762	\$52,902	\$164,186	\$121,329	\$120,522	\$348,586	\$435,716	\$3,799,956	\$1,626,074
Comparative Literature	\$31,688	\$32,827	\$23,257	\$46,137	\$52,156	\$51,372	\$59,613		\$23,933	\$14,741
English	\$220,470	\$266,567	\$194,110	\$245,768	\$452,917	\$356,236	\$445,999	\$346,125	\$449,337	\$400,783
Foreign Languages and Literatures	\$122,117	\$71,412	\$200,665	\$100,043	\$161,701	\$272,671	\$114,479	\$168,219	\$71,691	\$180,124
Health and Kinesiology	\$204,851	\$273,277	\$315,318	\$576,870	\$534,603	\$737,483	\$563,826	\$235,360	\$527,919	\$674,403
History	\$238,796	\$147,343	\$153,593	\$188,946	\$225,808	\$118,581	\$140,983	\$61,969	\$165,408	\$148,674
Linguistics				\$80,865	\$104,457	\$89,305	\$96,331		\$89,590	\$74,014
Philosophy	\$115,627	\$103,362	\$110,014	\$122,317	\$164,050	\$108,938	\$160,215	\$92,420	\$496,847	\$81,223
Political Science	\$266,295	\$204,605	\$93,674	\$295,011	\$109,089	\$128,280	\$242,019	\$44,800	\$361,749	\$146,928
Psychological Sciences	\$2,380,410	\$3,763,095	\$4,271,516	\$4,377,312	\$3,085,418	\$3,697,586	\$3,562,489	\$3,233,795	\$5,466,280	\$5,395,843
Sociology	\$522,159	\$286,226	\$768,188	\$586,974	\$498,485	\$681,427	\$459,512	\$145,634	\$1,866,392	\$1,426,926
Speech, Language, and Hearing Sciences	\$1,782,565	\$1,964,222	\$3,747,931	\$2,686,619	\$2,749,162	\$2,294,783	\$3,037,992	\$3,073,877	\$4,693,107	\$4,008,950
Visual and Performing Arts	\$19,467	\$73,355	\$17,159	\$9,211	\$21,812	\$9,346	\$12,300	\$2,809	\$13,252	\$174,717
Women's Studies	\$15,750	\$15,208	\$26,274						\$6,732	
Total	\$6,217,428	\$7,409,350	\$10,096,812	\$9,621,313	\$8,456,283	\$8,964,772	\$9,383,616	\$7,863,859	\$18,095,991	\$14,787,208

Department	1999-00	2000-01	2001-02	2002-03	2003-04	2004-05	2005-06	2006-07	2007-08	2008-09
Administration	1.00	0.20	0.16	0.05	6.00	5.10	3.00	2.00	3.00	1.00
Afro-American Studies								1.00		
American Studies	18.00	15.00	9.00	10.20	12.25	22.00	9.00		3.00	10.00
Anthropology										12.33
Communication	9.34	9.20	6.20	11.00	11.00	14.00	16.00	11.00	34.79	16.37
Comparative Literature	4.00	5.00	2.00	4.00	6.00	5.00	6.00		2.00	2.00
English	21.00	24.00	15.40	12.50	19.75	28.00	21.00	10.00	29.00	21.00
Foreign Languages and Literatures	12.40	9.33	5.40	7.00	9.20	13.40	10.66	5.50	4.50	5.00
Health and Kinesiology	21.15	17.25	15.75	25.25	23.67	15.70	27.10	15.30	15.95	19.05
History	15.00	16.00	11.00	11.00	15.00	12.00	9.00	4.00	10.00	10.00
Linguistics				6.00	7.00	11.00	7.00		5.05	5.00
Philosophy	11.00	12.00	9.25	12.00	14.00	14.00	12.00	7.00	12.80	7.00
Political Science	19.38	16.00	8.00	8.00	4.49	9.10	12.50	4.33	6.13	9.05
Psychological Sciences	52.66	43.84	50.25	52.43	41.95	53.55	45.56	30.13	49.19	40.04
Sociology	26.75	23.82	19.44	23.87	17.22	27.00	12.00	7.10	24.00	20.05
Speech, Language, and Hearing Sciences	24.30	30.10	24.40	27.40	28.83	31.80	33.80	20.95	41.45	28.64
Visual and Performing Arts	3.00	4.00	3.00	3.00	4.00	4.00	2.00	1.00	2.00	6.00
Women's Studies	3.00	1.00	2.00						0.90	
Total	241.98	226.74	181.25	213.70	220.36	265.65	226.62	119.31	243.76	212.53

* Fractional number of projects depicts a split of projects among departments.
2008-09 is the most recent completed fiscal year data

Source: Sponsored Program Services

Total Sponsored Program Proposals by Sponsor

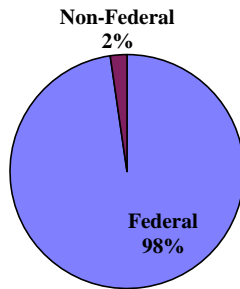
2009-10 Data Digest

College of Liberal Arts

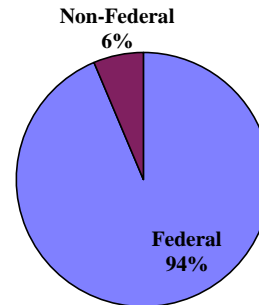
Sponsor	1999-00	2000-01	2001-02	2002-03	2003-04	2004-05	2005-06	2006-07	2007-08	2008-09
DHHS	\$10,110,307	\$6,645,241	\$8,089,183	\$25,227,743	\$21,618,678	\$27,100,773	\$36,837,088	\$50,208,858	\$18,396,592	\$30,960,972
NSF	\$4,856,082	\$3,997,313	\$3,316,697	\$6,660,609	\$3,954,935	\$5,641,435	\$7,894,765	\$6,040,050	\$12,090,605	\$10,667,105
DOEd	\$437,313	\$566,461	\$681,026	\$1,444,675		\$2,552,028	\$1,355,076			
DOD	\$3,772,519	\$79,985			\$1,254,101	\$985,822	\$209,641	\$1,628,089	\$814,687	\$4,013,019
DOT										\$5,000
Other Federal	\$1,034,582	\$629,704	\$180,678	\$13,217,273	\$2,119,685	\$2,724,116	\$1,112,145	\$1,869,694	\$2,883,738	\$1,258,618
Total Federal	\$20,210,803	\$11,918,704	\$12,267,584	\$46,550,300	\$28,947,399	\$39,004,174	\$47,408,715	\$59,746,691	\$34,185,622	\$46,904,714
Foundation/Industrial	\$317,605	\$1,116,176	\$1,490,122	\$1,169,786	\$3,759,999	\$1,918,748	\$1,491,922	\$1,621,014	\$3,517,123	\$2,933,516
ST,LCL,FGN Gov't's, & Misc.*	\$157,241	\$83,500	\$209,933	\$309,844	\$1,987,526	\$178,982	\$259,878			
State/Local Gov't								\$670,495	\$1,205,257	\$74,344
FGN Gov't								\$2,591,389	\$256,062	\$135,683
Other PU SPS									\$21,409	\$41,031
Misc.								\$476,694		
Total Non-Federal	\$474,846	\$1,199,676	\$1,700,055	\$1,479,630	\$5,747,525	\$2,097,730	\$1,751,800	\$4,882,898	\$4,999,851	\$3,184,574
Total Liberal Arts	\$20,685,649	\$13,118,380	\$13,967,639	\$48,029,930	\$34,694,924	\$41,101,904	\$49,160,515	\$64,629,589	\$39,185,473	\$50,089,288

*ST,LCL, FGN Gov't's, Other PU, Misc included in one category through 2005-06
2008-09 is the most recent completed fiscal year data

1999-00 Sponsored Program Proposals



2008-09 Sponsored Program Proposals



Source: OnePurdue Business Warehouse

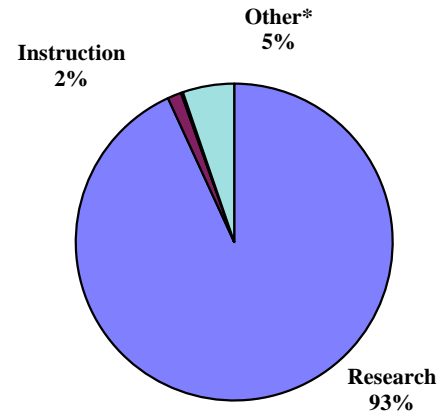
Total Sponsored Program Proposals by Activity Type

2009-10 Data Digest

College of Liberal Arts

	1999-00	2000-01	2001-02	2002-03	2003-04	2004-05	2005-06	2006-07	2007-08	2008-09
Proposals by Program										
Research	\$17,348,023	\$11,769,999	\$12,790,309	\$31,718,651	\$28,118,643	\$35,814,518	\$44,069,695	\$58,775,549	\$34,624,085	\$46,649,949
Instruction	\$2,427,051	\$272,836	\$729,530	\$409,839	\$1,580,412	\$2,581,315	\$3,308,839	\$852,008	\$808,759	\$706,924
Fellowships	\$233,047	\$553,782	\$40,753	\$9,130	\$248,701	\$63,025	\$237,225	\$52,361	\$431,814	\$102,103
Other*	\$677,528	\$521,763	\$407,047	\$15,892,310	\$4,747,168	\$2,643,046	\$1,544,756	\$5,426,363	\$3,320,815	\$2,630,312
Total Proposals	\$20,685,649	\$13,118,380	\$13,967,639	\$48,029,930	\$34,694,924	\$41,101,904	\$49,160,515	\$65,106,281	\$39,185,473	\$50,089,288

2008-09 Sponsored Program Proposals



* Other includes: Service, Outreach, and Engagement
 2008-09 is the most recent completed fiscal year data

Source: OnePurdue Business Warehouse

Total Sponsored Program Proposals by Department

2009-10 Data Digest

College of Liberal Arts

Department	1999-00	2000-01	2001-02	2002-03	2003-04	2004-05	2005-06	2006-07	2007-08	2008-09
Administration		\$140,850	\$32,984	\$280,661	\$347,902	\$42,457	\$39,626	\$51,386	\$14,500	\$7,500
American Studies			\$4,662	\$750						\$7,500
Anthropology									\$117,028	\$387,356
Communication	\$207,797	\$697,114	\$52,856	\$1,263,558	\$732,949	\$1,333,706	\$5,646,577	\$3,259,585	\$3,235,302	\$4,145,922
English	\$428,741	\$640,958	\$266,922	\$468,568	\$1,107,015	\$812,881	\$0	\$889,291	\$1,692,264	\$873,979
Foreign Languages and Literatures	\$349,763	\$26,537	\$342,411	\$25,974	\$1,000	\$1,064,373	\$156,298	\$651,207	\$18,928	\$125,683
Health and Kinesiology	\$159,875	\$388,087	\$631,189	\$752,478	\$756,941	\$1,684,410	\$4,252,799	\$2,458,905	\$3,851,430	\$1,961,369
History	\$418,738	\$86,520	\$141,471	\$165,191	\$110,199	\$63,425	\$336,500	\$234,696		\$20,500
Linguistics									\$569,859	\$2,767,872
Philosophy	\$2,000	\$2,800		\$12,907,179	\$3,581,310	\$756,778	\$225,003	\$2,431,360	\$475,416	\$90,750
Political Science	\$313,122	\$45,065	\$304,155	\$270,890	\$211,396	\$2,131,345	\$1,468,121	\$299,482	\$120,137	\$730,575
Psychological Sciences	\$11,699,603	\$6,573,643	\$4,560,071	\$19,071,191	\$16,165,907	\$15,516,146	\$20,168,100	\$30,624,714	\$14,151,966	\$16,076,690
Sociology*	\$305,707	\$747,772	\$1,367,519	\$2,089,398	\$1,562,553	\$4,455,548	\$1,101,087	\$7,262,154	\$6,961,791	\$8,120,933
Speech, Language, and Hearing Sciences	\$6,662,862	\$3,645,226	\$6,192,222	\$10,690,408	\$9,931,614	\$13,136,008	\$15,726,099	\$16,721,780	\$7,798,251	\$14,480,609
Student Services and Counseling	\$17,286									
Visual and Performing Arts	\$97,655	\$123,107	\$71,177	\$43,687	\$25,000	\$30,500	\$40,305	\$65,000	\$165,148	\$276,705
Women's Studies	\$22,500	\$701			\$161,138	\$74,327		\$156,720	\$13,455	\$15,345
Total	\$20,685,649	\$13,118,380	\$13,967,639	\$48,029,933	\$34,694,924	\$41,101,904	\$49,160,515	\$65,106,280	\$39,185,475	\$50,089,288

Department	1999-00	2000-01	2001-02	2002-03	2003-04	2004-05	2005-06	2006-07	2007-08	2008-09
Administration		0.60	1.16	1.55	2.10	4.00	4.00	3.00	2.00	1.00
American Studies			0.20	0.25						1.00
Anthropology									1.00	9.58
Communication	4.20	1.77	4.20	2.76	4.45	8.00	24.65	11.96	14.10	14.25
English	3.00	7.20	9.73	4.25	6.10	2.75		4.30	8.40	6.70
Foreign Languages and Literatures	1.79	1.50	0.20	1.00	1.00	2.21	2.00	2.02	0.60	1.00
Health and Kinesiology	8.15	7.00	15.90	20.62	11.85	14.38	20.98	21.15	19.35	13.33
History	4.00	3.00	4.00	2.00	3.00	1.30	2.60	0.56		3.00
Linguistics									0.40	4.03
Philosophy	1.00	1.00		1.00	4.00	3.75	0.50	1.00	1.80	0.33
Political Science	4.38	2.00	5.00	3.00	5.05	5.03	7.20	1.58	2.10	6.50
Psychological Sciences	36.06	33.02	32.75	36.33	35.68	35.48	37.72	66.72	37.50	46.60
Sociology*	8.80	14.94	19.34	11.47	12.62	16.75	14.78	24.16	28.15	17.30
Speech, Language, and Hearing Sciences	19.05	15.85	17.40	17.03	22.54	17.90	26.50	46.09	19.42	23.96
Student Services and Counseling	0.50									
Visual and Performing Arts	4.00	3.00	5.00	3.00	2.00	4.00	1.70	3.00	4.50	2.50
Women's Studies	1.00	1.00			0.62	0.50		1.65	0.90	0.90
Total	95.93	91.88	114.88	104.26	111.01	116.05	142.63	187.19	140.22	151.98

* 1998-99 to 2006-07 data include Sociology and Anthropology
 Fractional number of projects depicts a split of projects among departments.
 2008-09 is the most recent completed fiscal year data

Source: Sponsored Program Services



For questions concerning material in digest contact:

College of Liberal Arts
100 N. University Street
West Lafayette, IN 47907-2098
765-494-3663

Publication Date: September 2011